

# Technical Corner

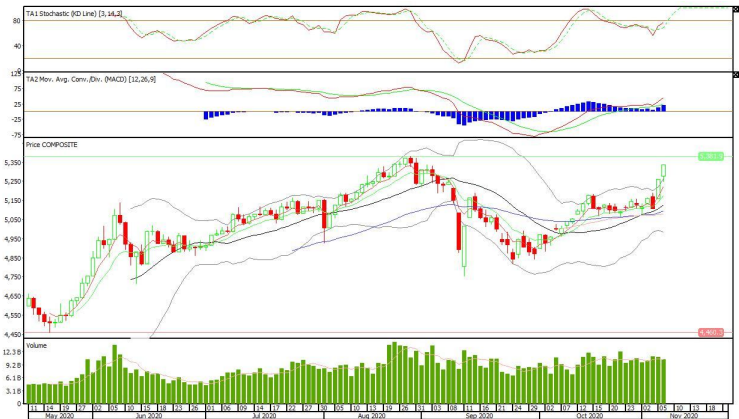
9 November 2020

## IHSG

Range: 5.275 – 5.395

---Indeks ditutup di atas EMA5,10 dan membentuk pola white closing marubozu yang merupakan sinyal bullish continuation, stochastic netral dan MACD histogram divergence positif. **Target** kenaikan indeks pada level **5.395** kemudian 5.455 dengan *support* di level 5.275 dan 5.215.

## IHSG (5.336)



## PT Bank BTPN Syariah, Tbk

Rekomendasi: Buy

---Harga ditutup di atas EMA5,10 dan membentuk pola white opening marubozu yang merupakan sinyal bullish continuation, stochastic golden cross dan MACD bullish cross over. **Target** kenaikan harga pada level **4.040** kemudian 4.140 dengan *support* di level 3.820 *cut loss* jika *break* 3.725.

## BTPS (3.930)



# Technical Corner

9 November 2020

## PT BPD Jawa Barat dan Banten, Tbk

### Rekomendasi: Buy

--- Harga ditutup di atas EMA5,10 dan membentuk pola white closing marubozu yang merupakan sinyal bullish continuation, stochastic golden cross dan MACD histogram convergence positif. **Target** kenaikan harga pada level 1.150 kemudian 1.170 dengan *support* di level 1.110 *cut loss* jika *break* 1.090.

## BJBR (1.130)



## PT Kalbe Farma, Tbk

### Rekomendasi: Buy

---Harga ditutup di atas EMA5 dan membentuk pola spinning top yang merupakan sinyal indecision, stochastic netral dan MACD histogram convergence negatif. **Target** kenaikan harga pada level 1.530 kemudian 1.545 dengan *support* di level 1.500 *cut loss* jika *break* 1.485.

## KLBF (1.515)



# Technical Corner

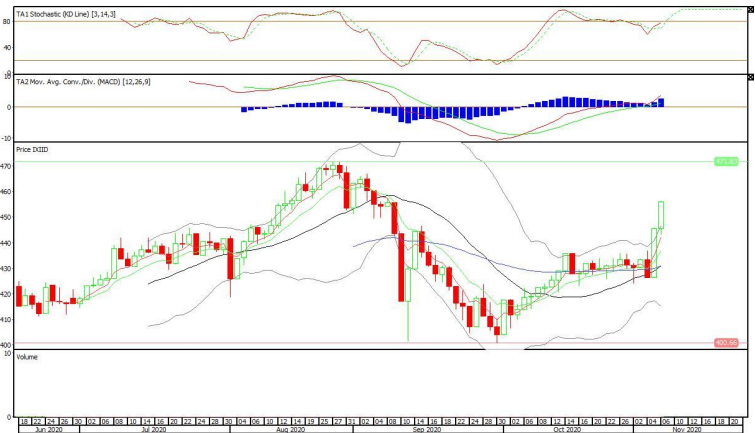
9 November 2020

## Premier ETF Index IDX30

**Rekomendasi: Buy**

--- Harga ditutup di atas EMA5,10 membentuk pola long white marubozu yang merupakan sinyal bullish continuation, stochastic netral dan MACD histogram divergence positif. **Target** kenaikan harga pada level **467** kemudian 478 dengan *support* di level 445 *cut loss* jika *break* 344.

## XIID (456)

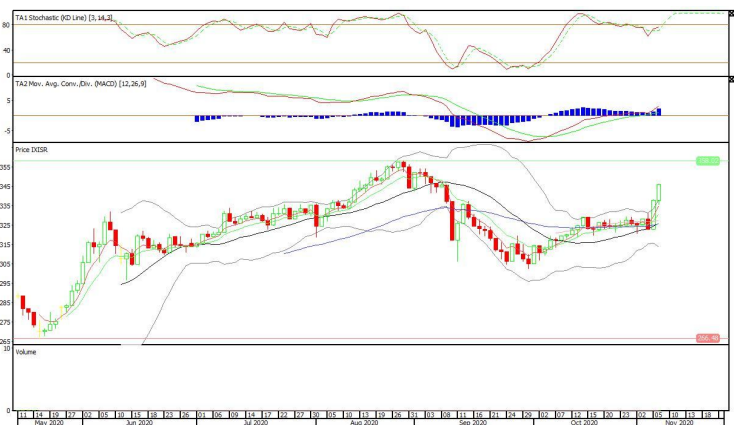


## XISR(346)

## Premier ETF SRI-KEHATI

**Rekomendasi: Buy**

--- Harga ditutup di atas EMA5,10, dan membentuk pola long white marubozu yang merupakan sinyal bullish continuation, stochastic netral dan MACD histogram divergence positif. **Target** kenaikan harga pada level **354** kemudian 362 dengan *support* di level 338 *cut loss* jika *break* 330.



# Technical Corner

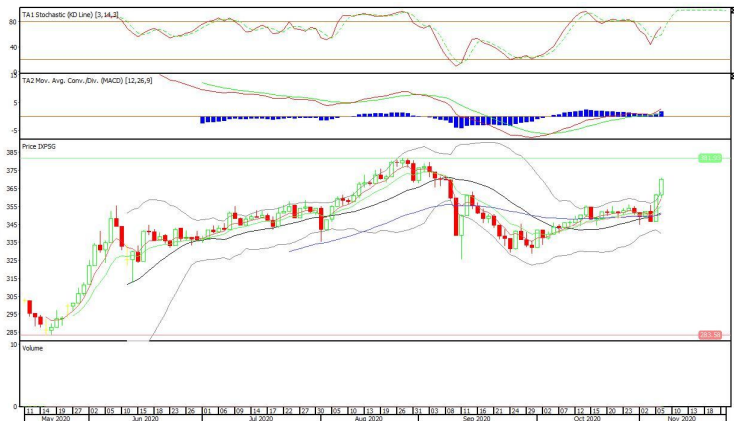
9 November 2020

## XPSG (370)

### Pinnacle Indonesia ESG ETF

#### Rekomendasi: Buy

--- Harga ditutup di atas EMA5,10 dan membentuk pola long white marubozu yang merupakan sinyal bullish continuation, stochastic netral dan MACD histogram divergence positif. **Target** kenaikan harga pada level **379** kemudian 388 dengan *support* di level 361 *cut loss* jika *break* 352.



**PT INDO PREMIER SEKURITAS**  
 Pacific Century Place 16th Floor SCBD Lot 10  
 Jl. Jend. Sudirman Kav. 52-53  
 Jakarta Selatan 12190 - Indonesia  
 p +62 21 5088 7200

#### ANALYSTS CERTIFICATION

The views expressed in this research report accurately reflect the analyst's personal views about any and all of the subject securities or issuers; and no part of the research analyst's compensation was, is, or will be, directly or indirectly, related to the specific recommendations or views expressed in the report.

#### DISCLAIMERS

This research is based on information obtained from sources believed to be reliable, but we do not make any representation or warranty nor accept any responsibility or liability as to its accuracy, completeness or correctness. Opinions expressed are subject to change without notice. This document is prepared for general circulation. Any recommendations contained in this document does not have regard to the specific investment objectives, financial situation and the particular needs of any specific addressee. This document is not and should not be construed as an offer or a solicitation of an offer to purchase or subscribe or sell any securities. PT. Indo Premier Sekuritas or its affiliates may seek or will seek investment banking or other business relationships with the companies in this report.

**Refer to Important disclosures on the last of this report**