

# Technical Corner

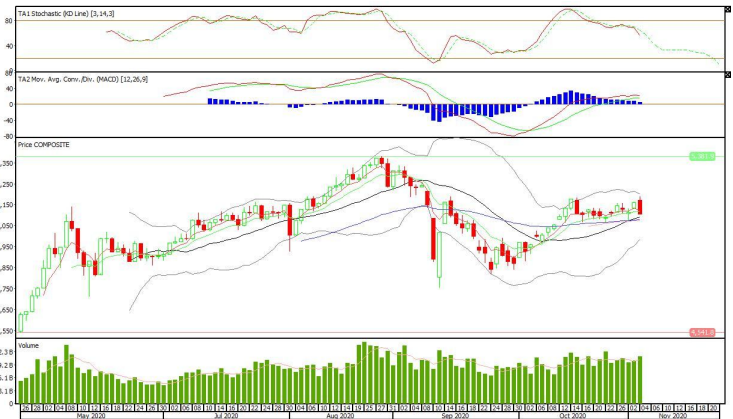
5 November 2020

## IHSG

Range: 5.050 – 5.160

---Indeks ditutup dengan membentuk pola black closing marubozu yang merupakan sinyal bearish continuation namun masih bertahan di atas MA20, stochastic netral dan MACD histogram convergence positif. **Target** kenaikan indeks pada level **5.160** kemudian 5.210 dengan *support* di level 5.050 dan 5.000.

## IHSG (5.105)



## PT Ace Hardware Indonesia, Tbk

Rekomendasi: Buy

---Harga ditutup di atas EMA5,10 dan membentuk pola spinning top merupakan sinyal indecision, stochastic golden cross dan MACD histogram convergence negatif. **Target** kenaikan harga pada level **1.600** kemudian 1.625 dengan *support* di level 1.550 *cut loss* jika *break* 1.525.

## ACES (1.575)



# Technical Corner

5 November 2020

## PT Semen Indonesia, Tbk

### Rekomendasi: Buy

--- Harga ditutup di bawah EMA5,10 dan membentuk pola doji yang merupakan sinyal indecision, stochastic netral dan MACD histogram divergence negatif. **Target** kenaikan harga pada level **9.325** kemudian 9.550 dengan *support* di level 8.925 *cut loss* jika *break* 8.725.

## SMGR (9.125)



## PT Tower Bersama Infrastructure, Tbk

### Rekomendasi: Buy on Weakness

---Harga ditutup tepat di MA20 dan membentuk pola black opening marubozu yang merupakan sinyal bearish continuation, stochastic netral dan MACD death cross. **Target** harga beli pada **1.385** dengan *resist* di level 1.460 kemudian 1.500.

## TBIG (1.425)



# Technical Corner

5 November 2020

## Premier ETF Indonesia Consumer

### Rekomendasi: Sell

--- Harga ditutup di bawah MA20 membentuk pola black closing marubozu yang merupakan sinyal bearish continuation, stochastic netral dan MACD histogram convergence positif. **Target** pelemahan harga pada level **883** kemudian 872 dengan *resist* di level 911 dan 924.

## XIIC (898)

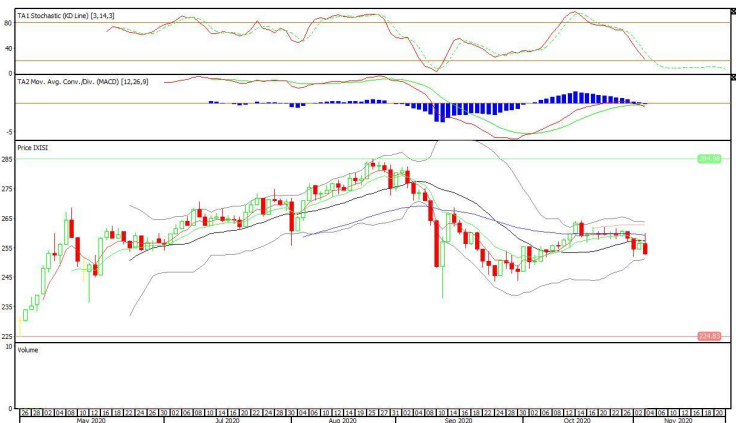


## XISI (253)

## Premier ETF SMinfra18

### Rekomendasi: Sell

--- Harga ditutup di bawah EMA5,10, dan membentuk pola long black marubozu yang merupakan sinyal bearish continuation, stochastic netral dan MACD death cross. **Target** pelemahan harga pada level **250** kemudian 247 dengan *resist* di level 256 dan 259.



# Technical Corner

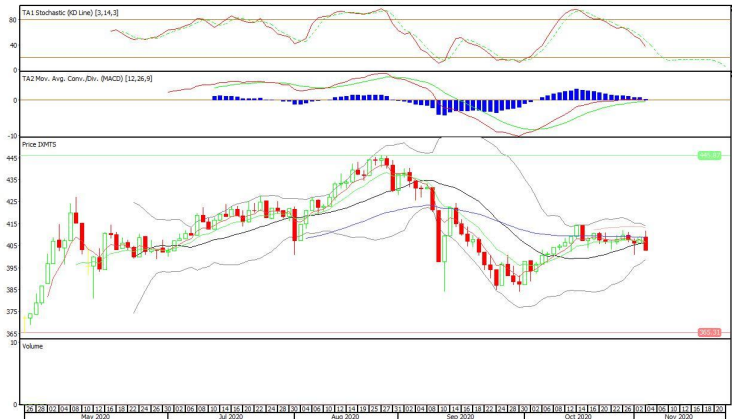
5 November 2020

## XMTS (403)

### ETF MNC36 Likuid

#### Rekomendasi: Sell

--- Harga ditutup di bawah EMA5,10 dan membentuk pola black closing marubozu yang merupakan sinyal bearish reversal, stochastic netral dan MACD histogram convergence positif. **Target** pelemahan harga pada level **398** kemudian 392 dengan *resist* di level 409 dan 414.



**PT INDO PREMIER SEKURITAS**  
 Pacific Century Place 16th Floor SCBD Lot 10  
 Jl. Jend. Sudirman Kav. 52-53  
 Jakarta Selatan 12190 - Indonesia  
 p +62 21 5088 7200

#### ANALYSTS CERTIFICATION

The views expressed in this research report accurately reflect the analyst's personal views about any and all of the subject securities or issuers; and no part of the research analyst's compensation was, is, or will be, directly or indirectly, related to the specific recommendations or views expressed in the report.

#### DISCLAIMERS

This research is based on information obtained from sources believed to be reliable, but we do not make any representation or warranty nor accept any responsibility or liability as to its accuracy, completeness or correctness. Opinions expressed are subject to change without notice. This document is prepared for general circulation. Any recommendations contained in this document does not have regard to the specific investment objectives, financial situation and the particular needs of any specific addressee. This document is not and should not be construed as an offer or a solicitation of an offer to purchase or subscribe or sell any securities. PT. Indo Premier Sekuritas or its affiliates may seek or will seek investment banking or other business relationships with the companies in this report.

**Refer to Important disclosures on the last of this report**