

Technical Corner

2 November 2020

IHSG

Range: 5.095 – 5.160

---Indeks ditutup di atas EMA5,10 dan membentuk pola doji yang merupakan sinyal indecision, stochastic netral dan MACD histogram divergence positif. Target pelemahan indeks pada level **5.095** kemudian 5.060 dengan *resist* di level 5.160 dan 5.190.

IHSG (5.128)



ANTM (1.055)

PT Aneka Tambang, Tbk

Rekomendasi: Buy

---Harga ditutup di atas EMA10 dan membentuk pola inverted hammer yang merupakan sinyal bullish reversal, stochastic netral dan MACD histogram convergence positif. **Target** kenaikan harga pada level **1.095** kemudian 1.135 dengan *support* di level 1.015 *cut loss* jika *break* 975.



Technical Corner

2 November 2020

PT Ciputra Development, Tbk

Rekomendasi: Buy

--- Harga ditutup di atas EMA5,10 dan membentuk pola inverted hammer yang merupakan sinyal bullish reversal, stochastic overbought dan MACD histogram convergence positif. **Target** kenaikan harga pada level **845** kemudian 865 dengan *support* di level 805 *cut loss* jika *break* 785.

CTRA (825)



PT Indah Kiat Pulp & Paper, Tbk

Rekomendasi: Buy

---Harga ditutup di atas EMA5,10 dan membentuk pola small bullish candle, stochastic netral dan MACD divergence positif. **Target** kenaikan harga pada level **9.350** kemudian 9.550 dengan *support* di level 8.900 *cut loss* jika *break* 8.675.

INKP (9.125)



Technical Corner

2 November 2020

BNI-AM Nusantara ETF MSCI Indonesia

Rekomendasi: Buy on Weakness

--- Harga ditutup di bawah EMA50 membentuk pola small bearish candle, stochastic death cross dan MACD histogram convergence positif. **Target** harga beli pada **861** dengan *resist* di level 870 kemudian 879.

XBNI (870)



XCLQ (81)

Cipta ETF Indeks LQ45

Rekomendasi: Buy on Weakness

--- Harga ditutup di atas EMA5,10, dan membentuk pola small bearish candle, stochastic death cross dan MACD histogram convergence positif. **Target** harga beli pada **80** dengan *resist* di level 81 kemudian 82.



Technical Corner

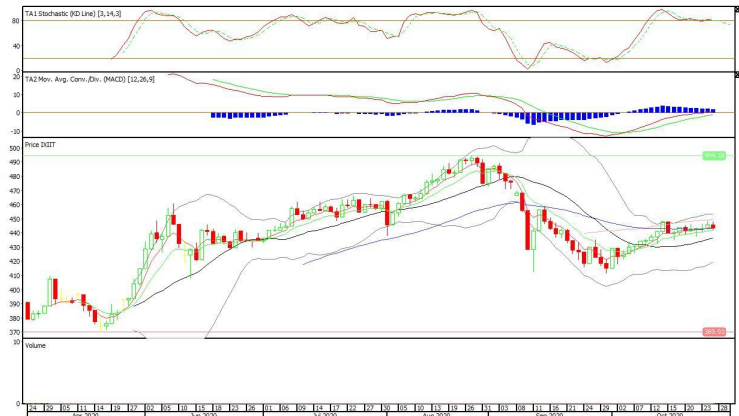
2 November 2020

Premier ETF IDX30

Rekomendasi: Buy on Weakness

--- Harga ditutup di atas EMA5,10 dan membentuk pola white bearish candle, stochastic netral dan MACD histogram convergence positif. **Target** harga beli pada **439** dengan *resist* di level 443 kemudian 447.

XIIT (443)



PT INDO PREMIER SEKURITAS
 Pacific Century Place 16th Floor SCBD Lot 10
 Jl. Jend. Sudirman Kav. 52-53
 Jakarta Selatan 12190 - Indonesia
 p +62 21 5088 7200

ANALYSTS CERTIFICATION

The views expressed in this research report accurately reflect the analyst's personal views about any and all of the subject securities or issuers; and no part of the research analyst's compensation was, is, or will be, directly or indirectly, related to the specific recommendations or views expressed in the report.

DISCLAIMERS

This research is based on information obtained from sources believed to be reliable, but we do not make any representation or warranty nor accept any responsibility or liability as to its accuracy, completeness or correctness. Opinions expressed are subject to change without notice. This document is prepared for general circulation. Any recommendations contained in this document does not have regard to the specific investment objectives, financial situation and the particular needs of any specific addressee. This document is not and should not be construed as an offer or a solicitation of an offer to purchase or subscribe or sell any securities. PT. Indo Premier Sekuritas or its affiliates may seek or will seek investment banking or other business relationships with the companies in this report.

Refer to Important disclosures on the last of this report