

# Technical Corner

27 October 2020

## IHSG

Range: 5.105 – 5.185

---Indeks ditutup di atas EMA5,10 dan membentuk pola white opening marubozu yang merupakan sinyal bullish continuation, stochastic golden cross dan MACD histogram divergence positif. **Target** kenaikan indeks pada level 5.185 kemudian 5.225 dengan support di level 5.105 dan 5.065.

## IHSG (5.144)



## PT Indo Tambangraya Megah, Tbk

Rekomendasi: Buy

---Harga ditutup di atas MA100 dan membentuk pola white opening marubozu yang merupakan sinyal bullish continuation, stochastic oversold dan MACD histogram divergence negatif. **Target** kenaikan harga pada level 8.200 kemudian 8.275 dengan *support* di level 8.050 *cut loss* jika *break* 7.975.

## ITMG (8.125)



# Technical Corner

27 October 2020

## PT Perusahaan Gas Negara, Tbk

**Rekomendasi: Buy**

--- Harga ditutup di atas EMA50 dan membentuk pola white marubozu yang merupakan sinyal bullish continuation, stochastic overbought dan MACD histogram divergence positif. **Target** kenaikan harga pada level **1.145** kemudian 1.180 dengan *support* di level 1.065 *cut loss* jika *break* 1.030.

## PGAS (1.105)



## RALS (575)

## PT Ramayana Lestari Sentosa, Tbk

**Rekomendasi: Buy**

---Harga ditutup di atas EMA5,10 dan membentuk pola white opening marubozu yang merupakan sinyal bullish continuation, stochastic golden cross dan MACD divergence positif. **Target** kenaikan harga pada level **590** kemudian 605 dengan *support* di level 560 *cut loss* jika *break* 545.



# Technical Corner

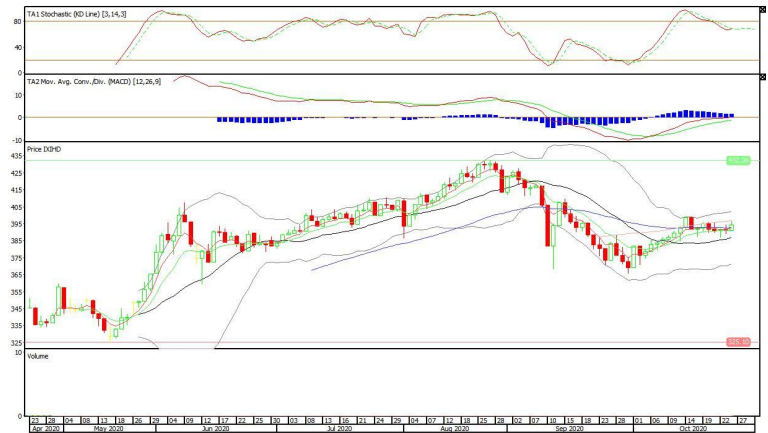
27 October 2020

## Premier ETF IDX High Dividend 20

**Rekomendasi: Buy**

--- Harga ditutup di atas EMA5,10 membentuk pola white opening marubozu yang merupakan sinyal bullish continuation, stochastic netral dan MACD histogram convergence positif. **Target** kenaikan harga pada level **397** kemudian 400 dengan *support* di level 391 *cut loss* jika *break* 388.

## XIHD (394)



## XISR (328)

## Premier ETF SRI-KEHATI

**Rekomendasi: Buy**

--- Harga ditutup di atas EMA5,10, dan membentuk pola white opening marubozu yang merupakan sinyal bullish continuation, stochastic golden cross dan MACD histogram convergence positif. **Target** kenaikan harga pada level **331** kemudian 334 dengan *support* di level 325 *cut loss* jika *break* 322.



# Technical Corner

27 October 2020

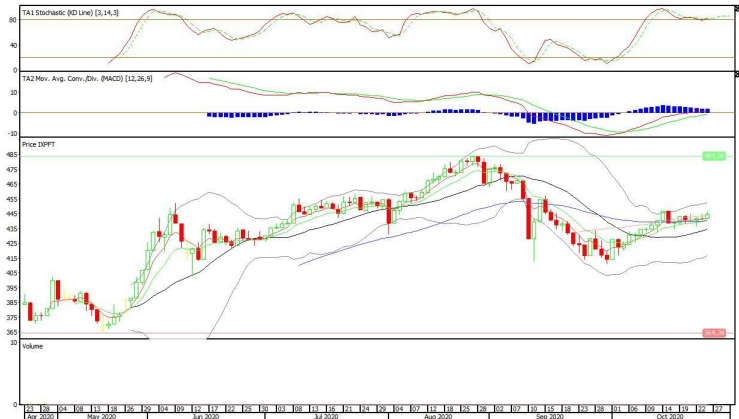
## XPFT (445)

### Pinnacle FTSE Indonesia ETF

#### Rekomendasi: Buy

--- Harga ditutup di atas EMA5,10 dan membentuk pola white opening marubozu yang merupakan sinyal bullish continuation, stochastic golden cross dan MACD histogram convergence positif.

**Target** kenaikan harga pada level **448** kemudian 451 dengan *support* di level 442 *cut loss* jika *break* 439.



**PT INDO PREMIER SEKURITAS**  
 Pacific Century Place 16th Floor SCBD Lot 10  
 Jl. Jend. Sudirman Kav. 52-53  
 Jakarta Selatan 12190 - Indonesia  
 p +62 21 5088 7200

#### ANALYSTS CERTIFICATION

The views expressed in this research report accurately reflect the analyst's personal views about any and all of the subject securities or issuers; and no part of the research analyst's compensation was, is, or will be, directly or indirectly, related to the specific recommendations or views expressed in the report.

#### DISCLAIMERS

This research is based on information obtained from sources believed to be reliable, but we do not make any representation or warranty nor accept any responsibility or liability as to its accuracy, completeness or correctness. Opinions expressed are subject to change without notice. This document is prepared for general circulation. Any recommendations contained in this document does not have regard to the specific investment objectives, financial situation and the particular needs of any specific addressee. This document is not and should not be construed as an offer or a solicitation of an offer to purchase or subscribe or sell any securities. PT. Indo Premier Sekuritas or its affiliates may seek or will seek investment banking or other business relationships with the companies in this report.

**Refer to Important disclosures on the last of this report**