

Technical Corner

23 October 2020

IHSG

Range: 5.060 – 5.120

---Indeks ditutup di atas EMA50 dan membentuk pola small bullish candle, stochastic netral dan MACD histogram convergence positif. **Target** kenaikan indeks pada level **5.120** kemudian 5.150 dengan support di level **5.060** dan 5.030.

IHSG (5.092)



PT Bank Central Asia, Tbk

Rekomendasi: Buy

---Harga ditutup di atas EMA5 dan membentuk pola white closing marubozu yang merupakan sinyal bullish continuation, stochastic death cross dan MACD histogram convergence positif. **Target** kenaikan harga pada level **29.425** kemudian 29.850 dengan *support* di level 28.525 *cut loss* jika *break* 28.125

BBCA (29.000)



Technical Corner

23 October 2020

PT Summarecon Agung, Tbk

Rekomendasi: Buy

--- Harga ditutup di atas EMA5,10 dan membentuk pola long white marubozu merupakan sinyal bullish continuation, stochastic netral dan MACD histogram convergence positif. **Target** kenaikan harga pada level **680** kemudian 705 dengan *support* di level 620 *cut loss* jika *break* 590

SMRA (650)



PT XL Axiata, Tbk

Rekomendasi: Buy

---Harga ditutup di atas EMA5 dan membentuk white closing marubozu yang merupakan sinyal bullish continuation, stochastic netral dan MACD histogram divergence positif. **Target** kenaikan harga pada level **2.170** kemudian 2.230 dengan *support* di level 2.040 *cut loss* jika *break* 1.990.

EXCL (2.110)



Technical Corner

23 October 2020

Premier ETF MSCI Indonesia Large Cap

Rekomendasi: Buy

--- Harga ditutup di atas EMA10 membentuk pola doji yang merupakan sinyal indecision, stochastic netral dan MACD histogram convergence positif. **Target** kenaikan harga pada level **223** kemudian 226 dengan *support* di level 217 *cut loss* jika *break* 214.

XIML (220)

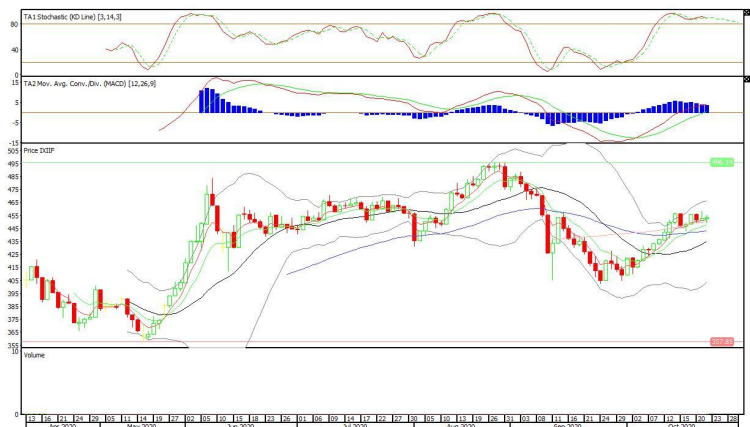


XIIF (453)

Premier ETF Indonesia Financial

Rekomendasi: Buy

--- Harga ditutup di atas EMA5,10, dan membentuk pola small bullish candle, stochastic death cross dan MACD histogram convergence positif. **Target** kenaikan harga pada level **456** kemudian 459 dengan *support* di level 450 *cut loss* jika *break* 447.



Technical Corner

23 October 2020

Premier ETF PEFINDO i-Grade

Rekomendasi: Buy

--- Harga ditutup di atas EMA10 dan membentuk pola white closing yang merupakan sinyal bullish continuation, stochastic netral dan MACD histogram convergence positif. **Target** kenaikan harga pada level **143** kemudian 145 dengan *support* di level 139 *cut loss* jika *break* 137.

XIPI (141)



PT INDO PREMIER SEKURITAS
 Pacific Century Place 16th Floor SCBD Lot 10
 Jl. Jend. Sudirman Kav. 52-53
 Jakarta Selatan 12190 - Indonesia
 p +62 21 5088 7200

ANALYSTS CERTIFICATION

The views expressed in this research report accurately reflect the analyst's personal views about any and all of the subject securities or issuers; and no part of the research analyst's compensation was, is, or will be, directly or indirectly, related to the specific recommendations or views expressed in the report.

DISCLAIMERS

This research is based on information obtained from sources believed to be reliable, but we do not make any representation or warranty nor accept any responsibility or liability as to its accuracy, completeness or correctness. Opinions expressed are subject to change without notice. This document is prepared for general circulation. Any recommendations contained in this document does not have regard to the specific investment objectives, financial situation and the particular needs of any specific addressee. This document is not and should not be construed as an offer or a solicitation of an offer to purchase or subscribe or sell any securities. PT. Indo Premier Sekuritas or its affiliates may seek or will seek investment banking or other business relationships with the companies in this report.

Refer to Important disclosures on the last of this report