

Technical Corner

22 October 2020

IHSG

Range: 5.060 – 5.130

---Indeks ditutup di bawah EMA5 dan membentuk pola small bearish candle, stochastic netral dan MACD histogram convergence positif. **Target** pelemahan indeks pada level **5.060** kemudian 5.025 dengan resist di level **5.130** dan 5.170.

IHSG (5.096)



PT Bank BTPN Syariah, Tbk

Rekomendasi: Buy

---Harga ditutup di atas EMA5,10 dan membentuk pola white opening marubozu yang merupakan sinyal bullish continuation, stochastic golden cross dan MACD histogram convergence positif. **Target** kenaikan harga pada level **3.910** kemudian 3.990 dengan *support* di level 3.750 *cut loss* jika *break* 3.670

BTPS (3.830)



Technical Corner

22 October 2020

PT Japfa Comfeed Indonesia, Tbk

Rekomendasi: Buy

--- Harga ditutup di atas EMA5,10 dan membentuk pola doji merupakan sinyal indecision, stochastic netral dan MACD histogram divergence positif. **Target** kenaikan harga pada level **1.155** kemudian 1.175 dengan *support* di level 1.125 *cut loss* jika break 1.105

JPFA (1.140)



PT Mitra Adiperkasa, Tbk

Rekomendasi: Buy

---Harga ditutup di atas EMA5,10 dan membentuk white closing marubozu yang merupakan sinyal bullish continuation, stochastic netral dan MACD histogram convergence positif. **Target** kenaikan harga pada level **660** kemudian 680 dengan *support* di level 630 *cut loss* jika break 615.

MAPI (645)



Technical Corner

22 October 2020

Premier ETF Index IDX30

Rekomendasi: Buy

--- Harga ditutup di atas EMA5,10 membentuk pola doji yang merupakan sinyal indecision, stochastic golden cross dan MACD histogram convergence positif. **Target** kenaikan harga pada level **434** kemudian 438 dengan *support* di level 426 *cut loss* jika *break* 422.

XIID (430)

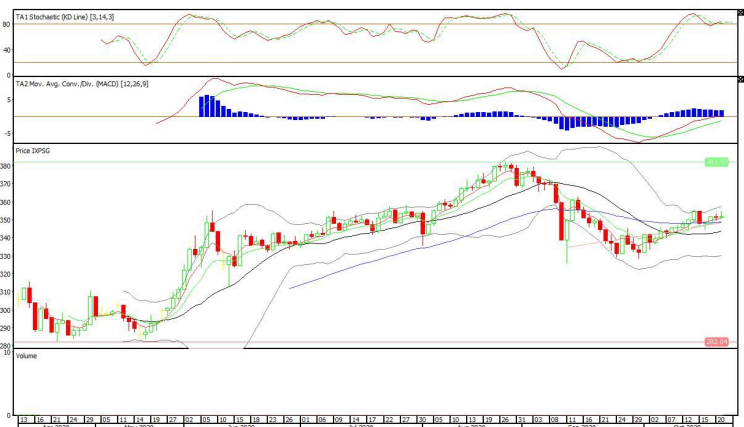


XPSG (352)

Pinnacle Indonesia ESG ETF

Rekomendasi: Buy

--- Harga ditutup di atas EMA5,10, dan membentuk pola doji yang merupakan sinyal indecision, stochastic overbought dan MACD histogram convergence positif. **Target** kenaikan harga pada level **355** kemudian 358 dengan *support* di level 348 *cut loss* jika *break* 345.



Technical Corner

22 October 2020

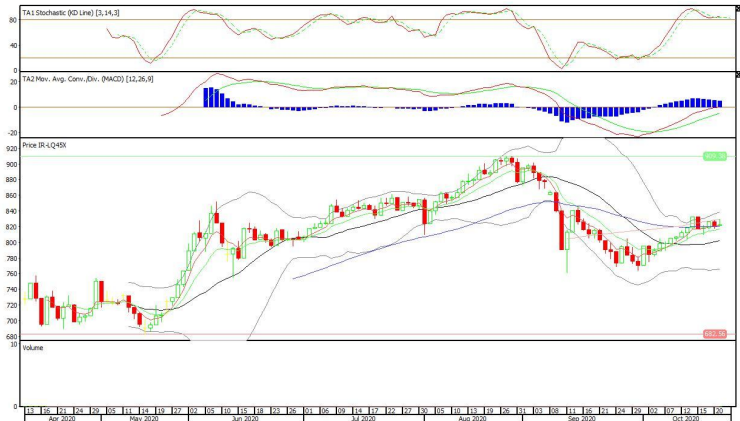
Premier ETF LQ45

Rekomendasi: Buy

--- Harga ditutup di atas EMA10 dan membentuk pola doji yang merupakan sinyal indecision, stochastic golden cross dan MACD histogram convergence positif.

Target kenaikan harga pada level **829** kemudian 838 dengan *support* di level 814 *cut loss* jika *break* 807.

R-LQ45X (822)



PT INDO PREMIER SEKURITAS
 Pacific Century Place 16th Floor SCBD Lot 10
 Jl. Jend. Sudirman Kav. 52-53
 Jakarta Selatan 12190 - Indonesia
 p +62 21 5088 7200

ANALYSTS CERTIFICATION

The views expressed in this research report accurately reflect the analyst's personal views about any and all of the subject securities or issuers; and no part of the research analyst's compensation was, is, or will be, directly or indirectly, related to the specific recommendations or views expressed in the report.

DISCLAIMERS

This research is based on information obtained from sources believed to be reliable, but we do not make any representation or warranty nor accept any responsibility or liability as to its accuracy, completeness or correctness. Opinions expressed are subject to change without notice. This document is prepared for general circulation. Any recommendations contained in this document does not have regard to the specific investment objectives, financial situation and the particular needs of any specific addressee. This document is not and should not be construed as an offer or a solicitation of an offer to purchase or subscribe or sell any securities. PT. Indo Premier Sekuritas or its affiliates may seek or will seek investment banking or other business relationships with the companies in this report.

Refer to Important disclosures on the last of this report