

Technical Corner

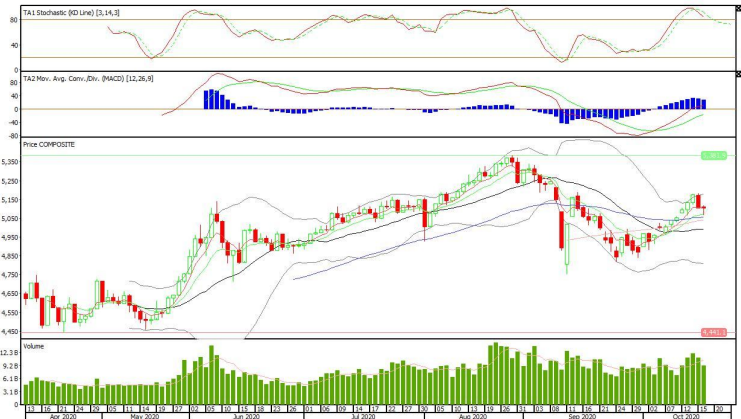
19 October 2020

IHSG

Range: 5.065 – 5.140

---Indeks ditutup di atas EMA5,10 dan membentuk pola small bearish candle, stochastic overbought dan MACD histogram convergence positif. **Target** kenaikan indeks pada level **5.140** kemudian 5.175 dengan *support* di level 5.065 dan 5.025.

IHSG (5.103)



PT Bank Mandiri, Tbk

Rekomendasi: Buy

---Harga ditutup di atas EMA10 dan membentuk pola small bearish candle, stochastic overbought dan MACD histogram convergence positif. **Target** kenaikan harga pada level **5.700** kemudian 5.825 dengan *support* di level 5.475 *cut loss* jika *break* 5.350.

BMRI (5.575)



Technical Corner

19 October 2020

PT Gudang Garam, Tbk

Rekomendasi: Buy

--- Harga ditutup di atas EMA5,10 dan membentuk pola hammer yang merupakan sinyal bullish reversal, stochastic overbought dan MACD histogram convergence positif. **Target** kenaikan harga pada level **44.550** kemudian 45.275 dengan *support* di level 43.125 *cut loss* jika *break* 42.500

GGRM (43.900)



PT Waskita Beton Precast, Tbk

Rekomendasi: Buy

---Harga ditutup di atas EMA5,10 dan membentuk pola long white marubozu yang merupakan sinyal bullish continuation, stochastic netral dan MACD histogram divergence positif. **Target** kenaikan harga pada level **169** kemudian 173 dengan *support* di level 161 *cut loss* jika *break* 157.

WSBP (165)



Technical Corner

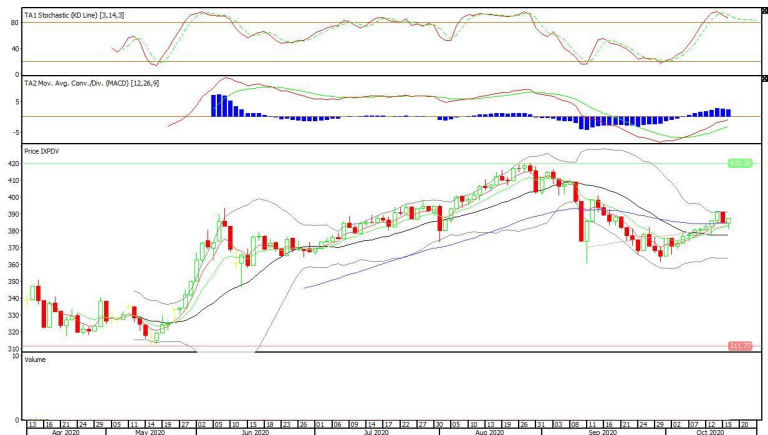
19 October 2020

Pinnacle Core High Dividend ETF

Rekomendasi: Buy

--- Harga ditutup di bawah MA100 membentuk white closing marubozu yang merupakan sinyal bullish continuation, stochastic overbought dan MACD histogram divergence positif. **Target** kenaikan harga pada level **391** kemudian 395 dengan *support* di level 384 *cut loss* jika *break* 381.

XPDV (388)

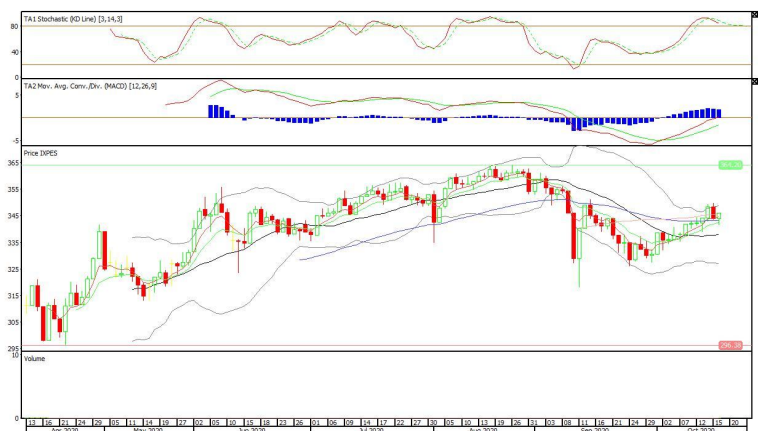


XPES (346)

Pinnacle Enhanced Sharia ETF

Rekomendasi: Buy

--- Harga ditutup di atas EMA50, dan membentuk pola white closing marubozu yang merupakan sinyal bullish continuation, stochastic overbought dan MACD histogram convergence positif. **Target** kenaikan harga pada level **348** kemudian 350 dengan *support* di level 343 *cut loss* jika *break* 340.



Technical Corner

19 October 2020

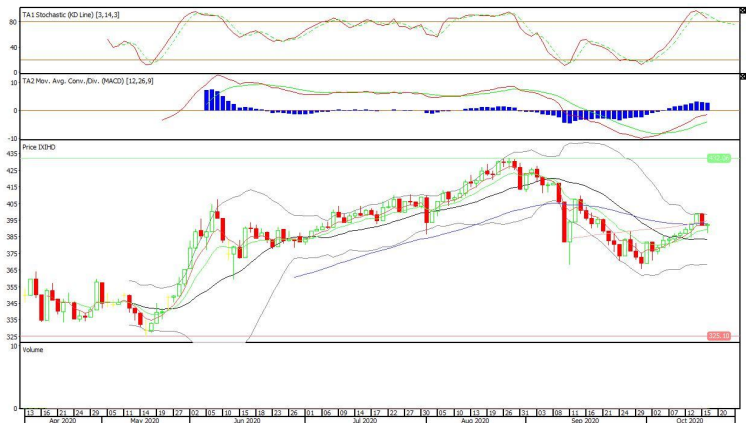
Premier ETF IDX High Dividend 20

Rekomendasi: Buy

--- Harga ditutup di atas EMA5,10 dan membentuk pola doji yang merupakan sinyal indecision, stochastic overbought dan MACD histogram convergence positif.

Target kenaikan harga pada level **395** kemudian 399 dengan *support* di level 388 *cut loss* jika *break* 384.

XIHD (393)



PT INDO PREMIER SEKURITAS
 Pacific Century Place 16th Floor SCBD Lot 10
 Jl. Jend. Sudirman Kav. 52-53
 Jakarta Selatan 12190 - Indonesia
 p +62 21 5088 7200

ANALYSTS CERTIFICATION

The views expressed in this research report accurately reflect the analyst's personal views about any and all of the subject securities or issuers; and no part of the research analyst's compensation was, is, or will be, directly or indirectly, related to the specific recommendations or views expressed in the report.

DISCLAIMERS

This research is based on information obtained from sources believed to be reliable, but we do not make any representation or warranty nor accept any responsibility or liability as to its accuracy, completeness or correctness. Opinions expressed are subject to change without notice. This document is prepared for general circulation. Any recommendations contained in this document does not have regard to the specific investment objectives, financial situation and the particular needs of any specific addressee. This document is not and should not be construed as an offer or a solicitation of an offer to purchase or subscribe or sell any securities. PT. Indo Premier Sekuritas or its affiliates may seek or will seek investment banking or other business relationships with the companies in this report.

Refer to Important disclosures on the last of this report