

Technical Corner

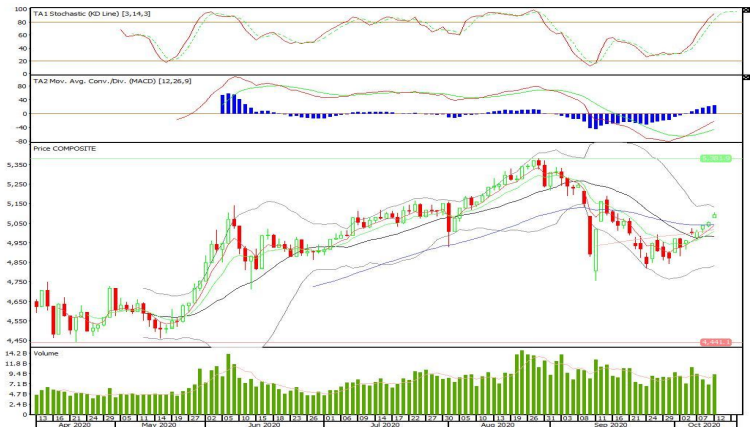
13 October 2020

IHSG

Range: 5.050 – 5.130

---Indeks ditutup di atas EMA50 dan membentuk pola small bullish candle, stochastic overbought dan MACD histogram divergence positif. **Target** kenaikan indeks pada level **5.130** kemudian 5.160 dengan *support* di level 5.050 dan 5.010.

IHSG (5.093)



PT Ace Hardware Indonesia, Tbk

Rekomendasi: Buy

---Harga ditutup di atas EMA50 dan membentuk pola long white marubozu yang merupakan sinyal bullish continuation, stochastic netral dan MACD histogram divergence positif. **Target** kenaikan harga pada level **1.630** kemudian 1.670 dengan *support* di level 1.550, *cut loss* jika *break* 1.510.

ACES (1.590)



Technical Corner

13 October 2020

PT Kimia Farma, Tbk

Rekomendasi: Buy

--- Harga ditutup di atas EMA5,10 dan membentuk pola long white marubozu yang merupakan sinyal bullish continuation, stochastic netral dan MACD histogram divergence positif. **Target** kenaikan harga pada level **3.440** kemudian 3.590 dengan *support* di level 3.100 *cut loss* jika *break* 2.940.

KAEF (3.270)



PT Tower Bersama Infrastructure, Tbk

Rekomendasi: Buy

---Harga ditutup di EMA5,10 dan membentuk pola long white marubozu yang merupakan sinyal bullish continuation, stochastic netral dan MACD bullish cross over. **Target** kenaikan harga pada level **1.380** kemudian 1.405 dengan *support* di level 1.335, *cut loss* jika *break* 1.315.

TBIG (1.360)



Technical Corner

13 October 2020

BNI-AM Nusantara ETF MSCI Indonesia

Rekomendasi: Buy

--- Harga ditutup di atas EMA5,10 membentuk white opening marubozu yang merupakan sinyal bullish continuation, stochastic overbought dan MACD histogram divergence positif. **Target** kenaikan harga pada level **867** kemudian 874 dengan *support* di level 853, *cut loss* jika *break* 846.

XBNI (861)

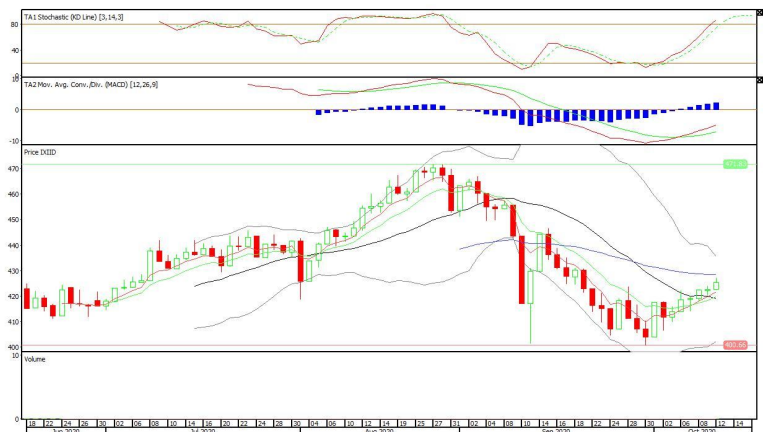


Premier ETF Index IDX30

Rekomendasi: Buy

--- Harga ditutup di atas EMA5,10, dan membentuk pola white opening marubozu yang merupakan sinyal bullish continuation, stochastic overbought dan MACD histogram divergence positif. **Target** kenaikan harga pada level **428** kemudian 431, dengan *support* di level 422, *cut loss* jika *break* 419.

XIID (425)



Technical Corner

13 October 2020

XPID (429)

Reksa Dana Index Pinnacle IDX30 ETF

Rekomendasi: Buy

--- Harga ditutup di atas MA100 dan membentuk pola white opening marubozu yang merupakan sinyal bullish continuation, stochastic overbought dan MACD histogram divergence positif.

Target kenaikan harga pada level **432** kemudian 435 dengan *support* di level 426, *cut loss* jika *break* 423.



PT INDO PREMIER SEKURITAS
 Pacific Century Place 16th Floor SCBD Lot 10
 Jl. Jend. Sudirman Kav. 52-53
 Jakarta Selatan 12190 - Indonesia
 p +62 21 5088 7200

ANALYSTS CERTIFICATION

The views expressed in this research report accurately reflect the analyst's personal views about any and all of the subject securities or issuers; and no part of the research analyst's compensation was, is, or will be, directly or indirectly, related to the specific recommendations or views expressed in the report.

DISCLAIMERS

This research is based on information obtained from sources believed to be reliable, but we do not make any representation or warranty nor accept any responsibility or liability as to its accuracy, completeness or correctness. Opinions expressed are subject to change without notice. This document is prepared for general circulation. Any recommendations contained in this document does not have regard to the specific investment objectives, financial situation and the particular needs of any specific addressee. This document is not and should not be construed as an offer or a solicitation of an offer to purchase or subscribe or sell any securities. PT. Indo Premier Sekuritas or its affiliates may seek or will seek investment banking or other business relationships with the companies in this report.

Refer to Important disclosures on the last of this report