

# Technical Corner

8 October 2020

## IHSG

Range: 4.965 – 5.045

---Indeks ditutup di atas MA20 dan membentuk pola long white marubozu yang merupakan sinyal continuation, stochastic netral dan MACD histogram divergence positif. **Target** kenaikan indeks pada level 5.045 kemudian 5.085 dengan *support* di level 4.965 dan 4.930.

## IHSG (5.004)



## PT Kalbe Farma, Tbk

Rekomendasi: Buy

---Harga ditutup di atas EMA5,10 dan membentuk pola white closing marubozu yang merupakan sinyal continuation, stochastic golden cross dan MACD histogram divergence positif. **Target** kenaikan harga pada level 1.615 kemudian 1.640 dengan *support* di level 1.565, *cut loss* jika *break* 1.545.

## KLBF (1.590)



# Technical Corner

8 October 2020

## PT Gudang Garam, Tbk

### Rekomendasi: Buy

--- Harga ditutup di atas MA20 dan membentuk pola long white marubozu yang merupakan sinyal continuation, stochastic netral dan MACD histogram divergence positif. **Target** kenaikan harga pada level **44.000** kemudian 45.250 dengan *support* di level 41.950 kemudian 40.975.

## GGRM (42.950)



## PT XL Axiata, Tbk

### Rekomendasi: Buy

---Harga ditutup di EMA5,10 dan membentuk pola white closing marubozu yang merupakan sinyal bullish continuation, stochastic netral dan MACD histogram divergence positif. **Target** kenaikan harga pada level **2.260** kemudian 2.340 dengan *support* di level 2.100, *cut loss* jika *break* 2.020.

## EXCL (2.180)



# Technical Corner

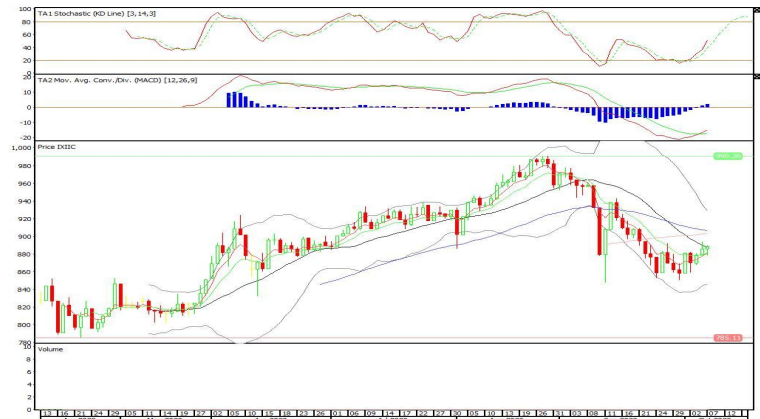
8 October 2020

## Premier ETF Indonesia Consumer

**Rekomendasi: Buy**

--- Harga ditutup tepat di MA20 membentuk pola small bullish candle, stochastic netral dan MACD histogram divergence positif. **Target** kenaikan harga pada level **894** kemudian 900 dengan *support* di level 882, *cut loss* jika *break* 872.

## XIIC (889)



## XIHD (384)

## Premier ETF IDX High Dividend 20

**Rekomendasi: Buy**

--- Harga ditutup di atas EMA5,10, dan membentuk pola doji yang merupakan sinyal indecision, stochastic netral dan MACD histogram divergence positif. **Target** kenaikan harga pada level **388** kemudian 390, dengan *support* di level 380, *cut loss* jika *break* 376.



# Technical Corner

8 October 2020

## ETF MNC36 Likuid

### Rekomendasi: Buy

--- Harga ditutup di atas MA20 dan membentuk pola doji merupakan sinyal indecision, stochastic netral dan MACD histogram divergence positif. **Target** kenaikan harga pada level **405** kemudian **408** dengan *support* di level **398**, *cut loss* jika *break* 394.

## XMTS (401)



**PT INDO PREMIER SEKURITAS**  
 Pacific Century Place 16th Floor SCBD Lot 10  
 Jl. Jend. Sudirman Kav. 52-53  
 Jakarta Selatan 12190 - Indonesia  
 p +62 21 5088 7200

### ANALYSTS CERTIFICATION

The views expressed in this research report accurately reflect the analyst's personal views about any and all of the subject securities or issuers; and no part of the research analyst's compensation was, is, or will be, directly or indirectly, related to the specific recommendations or views expressed in the report.

### DISCLAIMERS

This research is based on information obtained from sources believed to be reliable, but we do not make any representation or warranty nor accept any responsibility or liability as to its accuracy, completeness or correctness. Opinions expressed are subject to change without notice. This document is prepared for general circulation. Any recommendations contained in this document does not have regard to the specific investment objectives, financial situation and the particular needs of any specific addressee. This document is not and should not be construed as an offer or a solicitation of an offer to purchase or subscribe or sell any securities. PT. Indo Premier Sekuritas or its affiliates may seek or will seek investment banking or other business relationships with the companies in this report.

**Refer to Important disclosures on the last of this report**