

## Technical

### IHSG

**Range: 4.690 – 4.810**

---Indeks ditutup tepat di EMA50, dan membentuk pola small bullish candle, stochastic overbought dan MACD histogram divergence positif. Target kenaikan indeks pada level 4.810 kemudian 4.880 dengan *support* di level 4.690 dan 4.645.

### IHSG (4.754)



### Kalbe Farma

**Rekomendasi: Buy**

---Candle ditutup di atas MA20 dan membentuk pola long white marubozu yang merupakan sinyal bullish continuation, stochastic netral dan MACD histogram convergence negatif. Target kenaikan harga pada level 1.470 kemudian 1.510 dengan *support* di level 1.360, *cut loss* jika *break* 1.300.

### KLBF (1.415)



**Barito Pacific**

**Rekomendasi: Buy**

---Candle ditutup di atas EMA5,10 dan membentuk pola white opening marubozu yang merupakan sinyal bullish continuation, stochastic netral dan MACD bullish cross over. Target kenaikan harga pada level 1.435 kemudian 1.490 dengan *support* di level 1.280, *cut loss* jika *break* 1.200.

**BRPT (1.350)**



**Merdeka Copper Gold**

**Rekomendasi: Buy**

---Candle ditutup di atas EMA5,10 dan membentuk pola long white marubozu yang merupakan sinyal bullish continuation, stochastic netral dan MACD histogram convergence positif. Target kenaikan harga pada level 1.345 kemudian 1.385 dengan *support* di level 1.260, *cut loss* jika *break* 1.215.

**MDKA (1.300)**



**Premier ETF IDX30**

**Rekomendasi: Buy**

---Candle ditutup di atas EMA50 dan membentuk pola white closing marubozu yang merupakan sinyal bullish continuation, stochastic overbought dan MACD histogram divergence positif. Target kenaikan harga pada level 427 kemudian 437 dengan *support* di level 403, *cut loss* jika *break* 393.

**XIIT (415)**



**Pinnacle IDX30 ETF**

**Rekomendasi: Buy**

--- Candle ditutup di atas EMA50 dan membentuk pola white closing marubozu yang merupakan sinyal bullish continuation, stochastic overbought dan MACD histogram divergence positif. Target kenaikan harga pada level 408 kemudian 418 dengan *support* di level 387, *cut loss* jika *break* 378.

**XPID (398)**

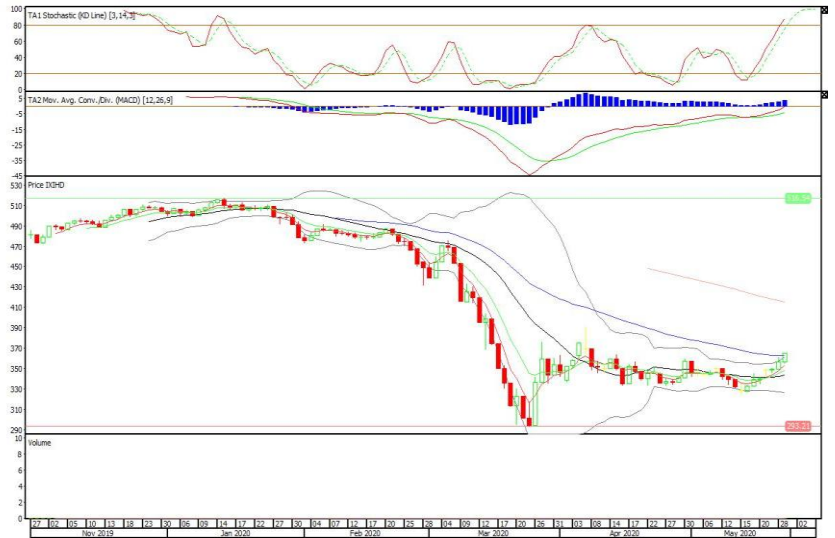


Premier ETF High Dividend 20

**Rekomendasi: Buy**

--- Candle ditutup di atas EMA50 dan membentuk pola white closing marubozu yang merupakan sinyal bullish continuation, stochastic overbought dan MACD histogram divergence positif. Target kenaikan harga pada level 374 kemudian 383 dengan *support* di level 355, *cut loss* jika *break* 349.

**XIHD (365)**



**Head Office****PT INDO PREMIER SEKURITAS**

Pacific Century Place 16/F, SCBD Lot 10

Jl. Jend. Sudirman Kav.52-53

Jakarta 12190 - Indonesia

p +62.21.5088.7200

**ANALYSTS CERTIFICATION.**

The views expressed in this research report accurately reflect the analyst's personal views about any and all of the subject securities or issuers; and no part of the research analyst's compensation was, is, or will be, directly or indirectly, related to the specific recommendations or views expressed in the report.

**DISCLAIMERS**

This research is based on information obtained from sources believed to be reliable, but we do not make any representation or warranty nor accept any responsibility or liability as to its accuracy, completeness or correctness. Opinions expressed are subject to change without notice. This document is prepared for general circulation. Any recommendations contained in this document does not have regard to the specific investment objectives, financial situation and the particular needs of any specific addressee. This document is not and should not be construed as an offer or a solicitation of an offer to purchase or subscribe or sell any securities. PT. Indo Premier Sekuritas or its affiliates may seek or will seek investment banking or other business relationships with the companies in this report.