

Technical

IHSG

Range: 4.550 – 4.640

---Indeks ditutup tepat MA20 dan membentuk pola small bearish candle, stochastic netral dan MACD histogram convergence positif. Target kenaikan indeks pada level 4.640 kemudian 4.680 dengan *support* di level 4.550 dan 4.510.

IHSG (4.597)



Bukit Asam

Rekomendasi: Buy

---Candle ditutup di atas EMA50 dan membentuk pola long white maarubozu yang merupakan sinyal bullish continuation, stochastic netral dan MACD histogram divergence positif. Target kenaikan harga pada level 2.160 kemudian 2.240 dengan *support* di level 1.970, *cut loss* jika *break* 1.880.

PTBA (2.060)



Mayora Indah

Rekomendasi: Buy

---Candle ditutup di atas EMA5,10 dan membentuk pola long white marubozu yang merupakan sinyal bullish continuation, stochastic golden cross sedangkan MACD histogram divergence negatif. Target kenaikan harga pada level 2.170 kemudian 2.200 dengan *support* di level 2.090, *cut loss* jika *break* 2.060.

MYOR (2.130)



H.M. Sampoerna

Rekomendasi: Buy

---Candle ditutup di atas EMA50 dan membentuk pola doji yang merupakan sinyal bullish continuation, stochastic netral dan MACD histogram divergence positif. Target kenaikan pada level 1.680 kemudian 1.740 dengan *support* di level 1.590, *cut loss* jika *break* 1.560.

HMSP (1.640)

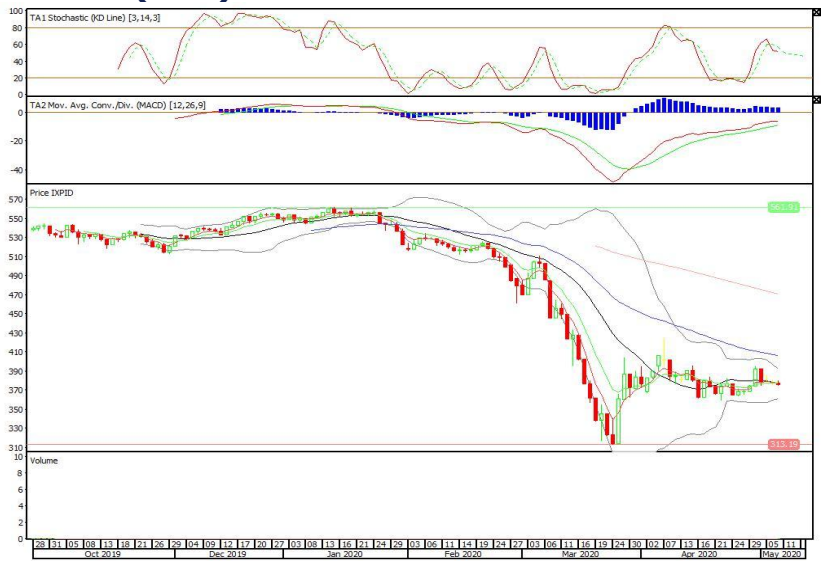


Pinnacle IDX30 ETF

Rekomendasi: Buy

---Candle ditutup di atas lowerband dengan membentuk pola small bearish candle, stochastic netral, MACD histogram divergence positif. Target kenaikan harga pada level 380 kemudian 385 dengan *support* di level 370, *cut loss* jika *break* 365.

XPID (375)



Cipta ETF Index LQ45

Rekomendasi: Buy

---Candle ditutup tepat pada EMA5,10 dengan membentuk pola doji yang merupakan sinyal indecision, stochastic netral, MACD histogram convergence positif. Target kenaikan harga pada level 71 kemudian 73 dengan *support* di level 67, *cut loss* jika *break* 65.

XCLQ (69)

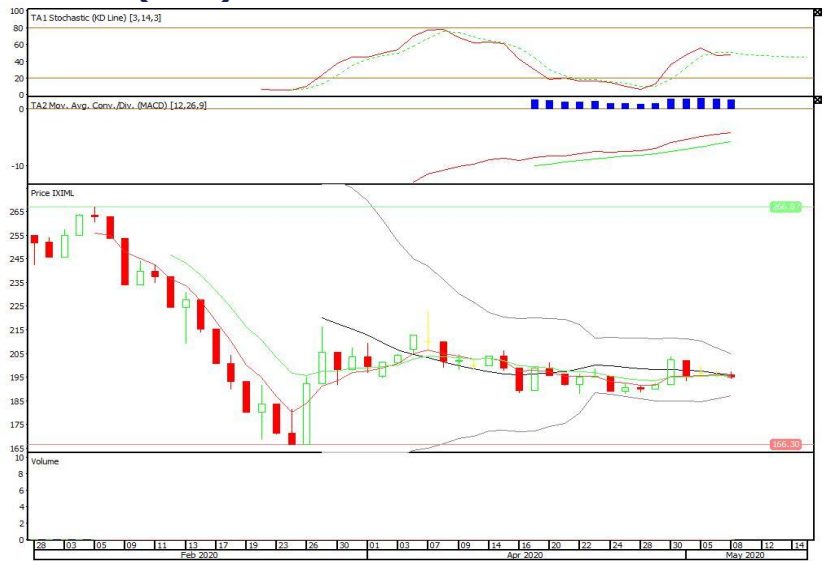


Premier ETF MSCI Indonesia Large Cap

Rekomendasi: Buy

---Candle bertahan di atas EMA10 dengan membentuk pola small bearish candle, stochastic netral, MACD histogram convergence positif. Target kenaikan harga pada level 197 kemudian 200 dengan *support* di level 191, *cut loss* jika *break* 188.

XIML (194)



Head Office**PT INDO PREMIER SEKURITAS**

Pacific Century Place 16/F, SCBD Lot 10
Jl. Jend. Sudirman Kav.52-53
Jakarta 12190 - Indonesia
p +62.21.5088.7200

ANALYSTS CERTIFICATION.

The views expressed in this research report accurately reflect the analyst's personal views about any and all of the subject securities or issuers; and no part of the research analyst's compensation was, is, or will be, directly or indirectly, related to the specific recommendations or views expressed in the report.

DISCLAIMERS

This research is based on information obtained from sources believed to be reliable, but we do not make any representation or warranty nor accept any responsibility or liability as to its accuracy, completeness or correctness. Opinions expressed are subject to change without notice. This document is prepared for general circulation. Any recommendations contained in this document does not have regard to the specific investment objectives, financial situation and the particular needs of any specific addressee. This document is not and should not be construed as an offer or a solicitation of an offer to purchase or subscribe or sell any securities. PT. Indo Premier Sekuritas or its affiliates may seek or will seek investment banking or other business relationships with the companies in this report.