

# Technical Corner

23 April 2020

**IHSG**

**Range: 4.465 – 4.645**

---Indeks ditutup di atas MA20 dan membentuk pola long white marubozu yang merupakan sinyal bullish continuation, stochastic netral dan MACD histogram convergence positif. Target kenaikan indeks pada level 4.645 kemudian 4.745 dengan *support* di level 4.465 dan 4.370.

**IHSG (4.568)**



**AKR Corporindo**

**Rekomendasi: Buy**

---Candle ditutup di atas EMA5,10 dan membentuk pola white opening marubozu yang merupakan sinyal bullish continuation, stochastic oversold dan MACD histogram divergence positif. Target kenaikan harga pada level 2.320 kemudian 2.540 dengan *support* di level 1.820, *cut loss* jika *break* 1.660.

**AKRA (2.070)**



**XL Axiata**

**Rekomendasi: Buy**

---Candle ditutup di atas EMA5,10 dan membentuk pola long white marubozu yang merupakan sinyal bullish continuation, stochastic netral dan MACD histogram divergence positif. Target kenaikan harga pada level 2.785 kemudian 3.000 dengan support di level 2.340, cut loss jika break 2.160.

**EXCL (2.560)**



**Semen Indonesia**

**Rekomendasi: Buy**

---Candle ditutup di atas EMA5 dan membentuk pola long white marubozu yang merupakan sinyal bullish continuation, stochastic netral dan MACD histogram divergence negatif. Target kenaikan harga pada level 7.725 kemudian 8.500 dengan support di level 6.150, cut loss jika break 5.475.

**SMGR (6.900)**



**Premier ETF JII**

**Rekomendasi: Buy**

---Candle ditutup di atas EMA5,10 dengan membentuk pola long white marubozu yang merupakan sinyal bullish continuation, stochastic netral, MACD histogram divergence positif. Target kenaikan harga pada level 516 kemudian 530 dengan *support* di level 484, *cut loss* jika *break* 471.

**XIJI (499)**



**Premier ETF SMinfra18**

**Rekomendasi: Buy**

---Candle ditutup di atas EMA5,10 dengan membentuk pola long white marubozu yang merupakan sinyal bullish continuation, stochastic netral, MACD histogram divergence positif. Target kenaikan harga pada level 232 kemudian 242 dengan *support* di level 214, *cut loss* jika *break* 206.

**XISI (222)**

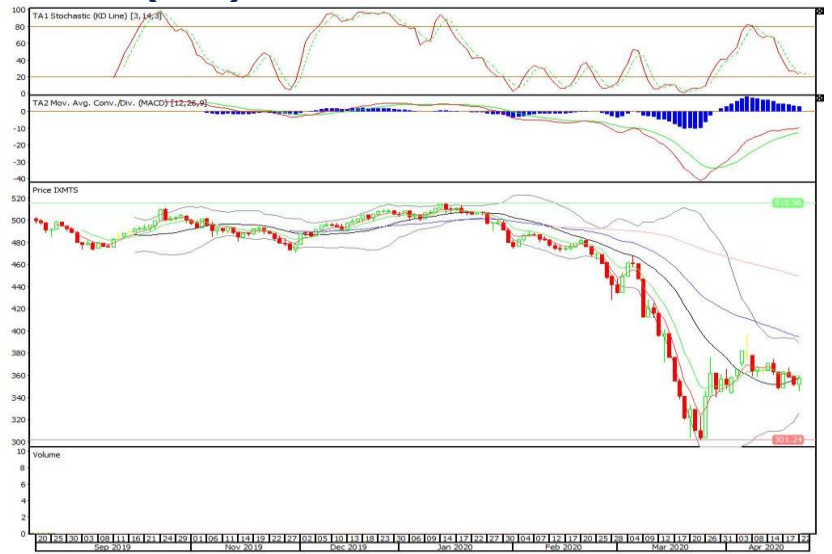


ETF MNC36 Likuid

**Rekomendasi: Buy**

---Candle ditutup di atas EMA5 dengan membentuk pola long white marubozu yang merupakan sinyal bullish continuation, stochastic netral, MACD histogram convergence positif. Target kenaikan harga pada level 363 kemudian 369 dengan *support* di level 351, *cut loss* jika *break* 345.

**XMTS (357)**



**Head Office****PT INDO PREMIER SEKURITAS**

Pacific Century Place 16/F, SCBD Lot 10  
Jl. Jend. Sudirman Kav.52-53  
Jakarta 12190 - Indonesia  
p +62.21.5088.7200

**ANALYSTS CERTIFICATION.**

The views expressed in this research report accurately reflect the analyst's personal views about any and all of the subject securities or issuers; and no part of the research analyst's compensation was, is, or will be, directly or indirectly, related to the specific recommendations or views expressed in the report.

**DISCLAIMERS**

This research is based on information obtained from sources believed to be reliable, but we do not make any representation or warranty nor accept any responsibility or liability as to its accuracy, completeness or correctness. Opinions expressed are subject to change without notice. This document is prepared for general circulation. Any recommendations contained in this document does not have regard to the specific investment objectives, financial situation and the particular needs of any specific addressee. This document is not and should not be construed as an offer or a solicitation of an offer to purchase or subscribe or sell any securities. PT. Indo Premier Sekuritas or its affiliates may seek or will seek investment banking or other business relationships with the companies in this report.