

Technical Corner

14 April 2020

IHSG

Range: 4.570 – 4.700

---Indeks ditutup di atas EMA10 dan membentuk pola small bearish candle, stochastic netral dan MACD histogram convergence positif. Target pelemahan indeks pada level 4.570 kemudian 4.500 dengan *resist* di level 4.700 dan 4.770.

IHSG (4.624)



Jasa Marga

Rekomendasi: Buy

---Candle ditutup di atas EMA5,10 dan membentuk pola long white marubozu yang merupakan sinyal bullish continuation, stochastic netral dan MACD histogram divergence positif. Target kenaikan harga pada level 3.275 kemudian 3.450 dengan *support* di level 2.800, *cut loss* jika *break* 2.600.

JSMR (3.050)



Salim Ivomas Pratama

Rekomendasi: Buy

---Candle ditutup di atas EMA5,10 dan membentuk pola white closing marubozu yang merupakan sinyal bullish continuation, stochastic overbought dan MACD histogram divergence positif. Target kenaikan harga pada level 262 kemudian 272 dengan support di level 232, *cut loss* jika *break* 218.

SIMP (248)



Gudang Garam

Rekomendasi: Buy

---Candle ditutup di atas EMA50 dan membentuk pola spinning top yang merupakan sinyal indecision, stochastic netral dan MACD histogram convergence positif. Target kenaikan harga pada level 49.925 kemudian 51.725 dengan *support* di level 46.750, *cut loss* jika *break* 45.250.

GGRM (48.600)

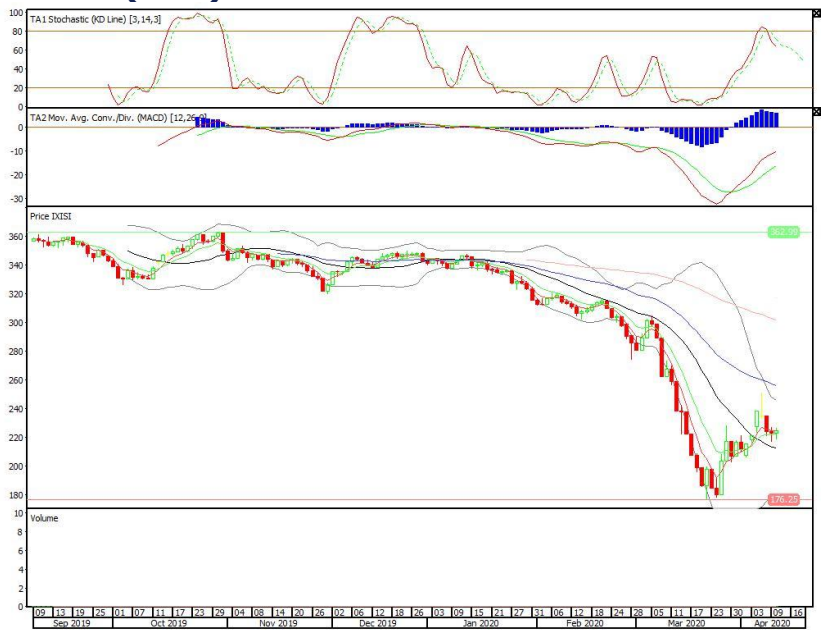


Premier ETF SMinfra18

Rekomendasi: Buy

---Candle ditutup di atas EMA5,10 dengan membentuk pola small bullish candle, stochastic netral, MACD histogram convergence positif. Target kenaikan harga pada level 230 kemudian 237 dengan support di level 218, cut loss jika break 212.

XISI (224)



Batavia Smart Liquid ETF

Rekomendasi: Buy

---Candle bertahan diatas MA20 dengan membentuk pola small bearish candle, stochastic netral, MACD histogram convergence positif. Target kenaikan harga pada level 347 kemudian 353 dengan support di level 336, cut loss jika break 329.

XBLQ (341)

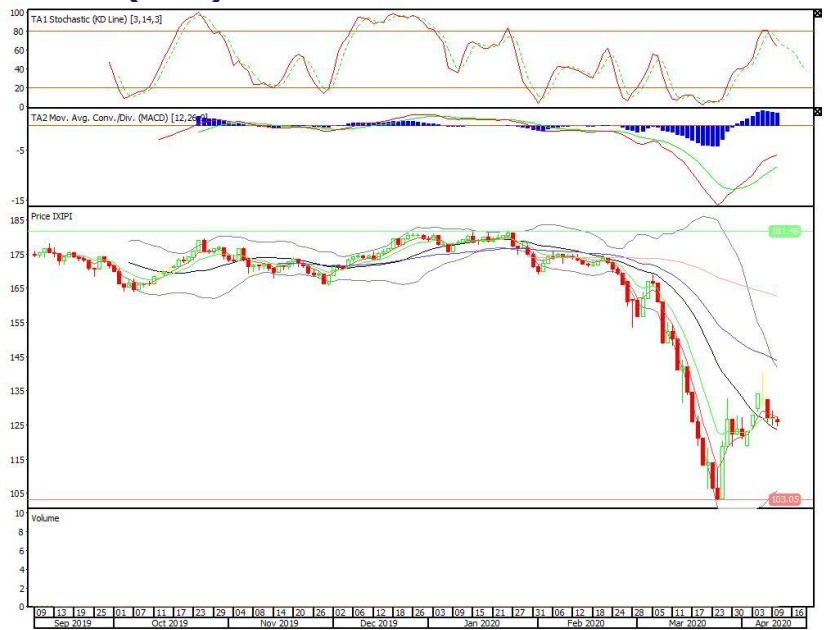


Premier ETF PEFINDO i-Grade

Rekomendasi: Buy

---Candle bertahan di atas MA20 dengan membentuk pola small bearish candle, stochastic netral, MACD histogram convergence positif. Target kenaikan harga pada level 127 kemudian 129 dengan *support* di level 123, *cut loss* jika *break* 121.

XIPI (125)



Head Office**PT INDO PREMIER SEKURITAS**

Pacific Century Place 16/F, SCBD Lot 10
Jl. Jend. Sudirman Kav.52-53
Jakarta 12190 - Indonesia
p +62.21.5088.7200

ANALYSTS CERTIFICATION.

The views expressed in this research report accurately reflect the analyst's personal views about any and all of the subject securities or issuers; and no part of the research analyst's compensation was, is, or will be, directly or indirectly, related to the specific recommendations or views expressed in the report.

DISCLAIMERS

This research is based on information obtained from sources believed to be reliable, but we do not make any representation or warranty nor accept any responsibility or liability as to its accuracy, completeness or correctness. Opinions expressed are subject to change without notice. This document is prepared for general circulation. Any recommendations contained in this document does not have regard to the specific investment objectives, financial situation and the particular needs of any specific addressee. This document is not and should not be construed as an offer or a solicitation of an offer to purchase or subscribe or sell any securities. PT. Indo Premier Sekuritas or its affiliates may seek or will seek investment banking or other business relationships with the companies in this report.