

# Technical Corner

9 April 2020

**IHSG**

**Range: 4.480 – 4.780**

---Indeks ditutup di bawah EMA5 dan membentuk pola black opeing marubozu yang merupakan sinyal bearish continuation, stochastic dead cross dan MACD histogram convergence positif. Target pelemahan indeks pada level 4.480 kemudian 4.310 dengan *resist* di level 4.780 dan 4.940.

**IHSG (4.627)**



**Indofarma**

**Rekomendasi: Buy**

---Candle ditutup di atas EMA5,10 dan membentuk pola long white marubozu yang merupakan sinyal bullish continuation, stochastic netral dan MACD histogram convergence positif. Target kenaikan harga pada level 1.270 kemudian 1.335 dengan *support* di level 1.060, *cut loss* jika *break* 950.

**INAF (1.165)**



**Kimia Farma**

**Rekomendasi: Buy**

---Candle ditutup di atas EMA5,10 dan membentuk pola small bullish, stochastic netral dan MACD histogram convergence positif. Target kenaikan harga pada level 1.450 kemudian 1.560 dengan *support* di level 1.220, *cut loss* jika *break* 1.145.

**KAEF (1.340)**



**Indofood CBP Sukses Makmur**

**Rekomendasi: SELL**

---Candle ditutup di bawah MA20 dan membentuk pola black closing marubozu yang merupakan sinyal bearish continuation, stochastic netral dan MACD histogram convergence positif. Target pelemahan harga pada level 9.275 kemudian 9.000 dengan *resist* di level 9.950 dan 10.225.

**ICBP (9.600)**

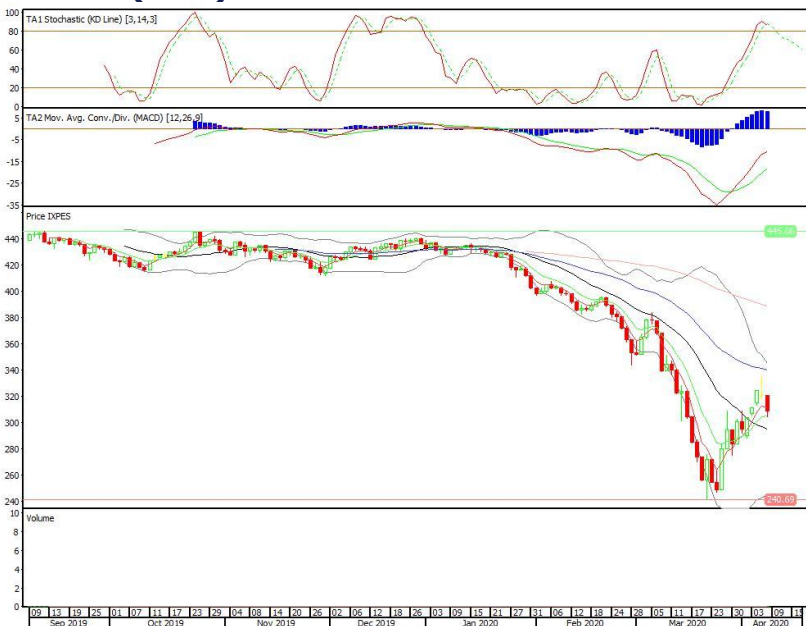


**Pinnacle Enhanced Sharia ETF**

**Rekomendasi: SELL**

---Candle ditutup di bawah EMA5 dengan membentuk pola black opening marubozu yang merupakan sinyal bearish continuation, stochastic overbought, MACD histogram convergence positif. Target pelemahan harga pada level 294 kemudian 283 dengan *resist* di level 320 dan 334.

**XPES (308)**

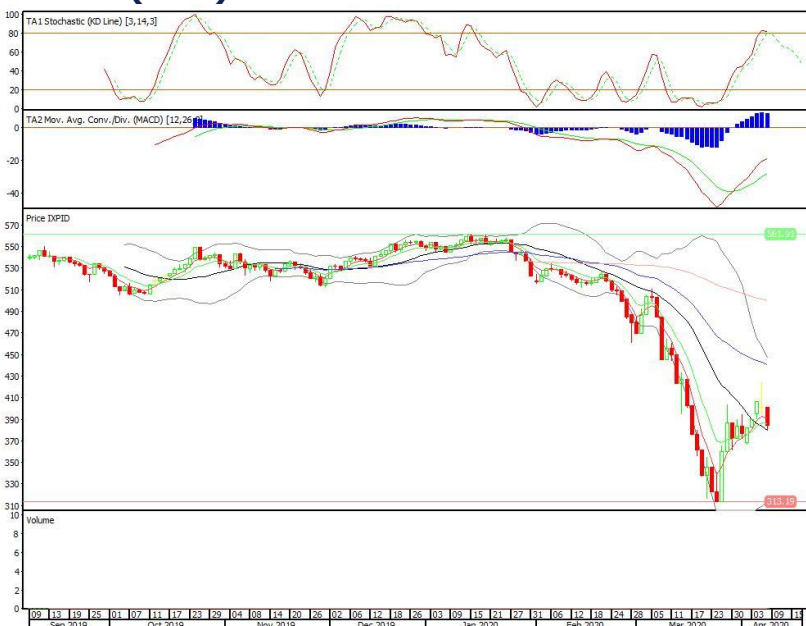


**Pinnacle IDX30 ETF**

**Rekomendasi: SELL**

---Candle ditutup di bawah EMA5,10 dengan membentuk pola black opening marubozu yang merupakan sinyal bearish continuation, stochastic overbought, MACD histogram convergence positif. Target pelemahan harga pada level 367 kemudian 350 dengan *resist* di level 401 dan 418.

**XPID (384)**

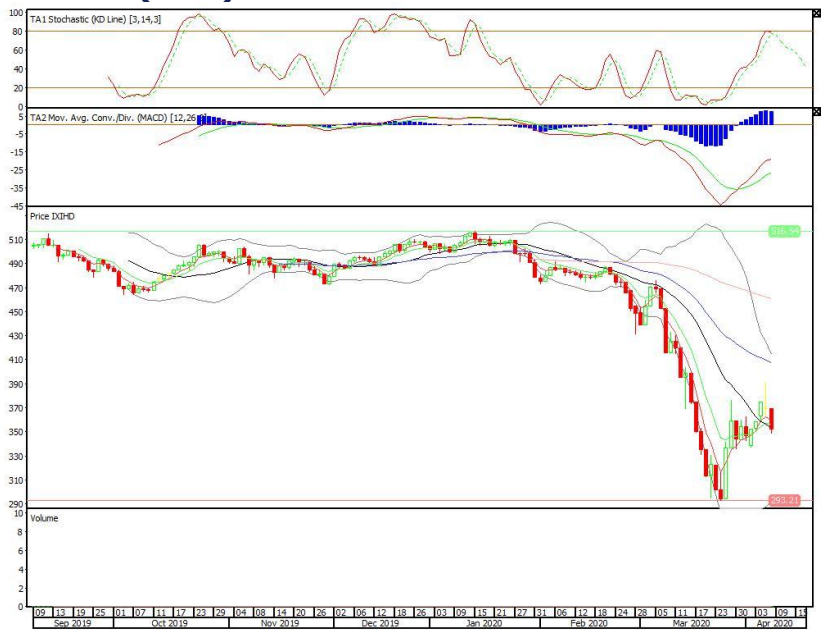


Premier ETF IDX High Dividend 20

**Rekomendasi: SELL**

---Candle ditutup di bawah EMA5,10 dengan membentuk pola black opening marubozu yang merupakan sinyal bearish continuation, stochastic netral, MACD histogram convergence positif. Target pelemahan harga pada level 337 kemudian 318 dengan *resist* di level 369 dan 391.

**XIHD (352)**



**Head Office****PT INDO PREMIER SEKURITAS**

Pacific Century Place 16/F, SCBD Lot 10  
Jl. Jend. Sudirman Kav.52-53  
Jakarta 12190 - Indonesia  
p +62.21.5088.7200

**ANALYSTS CERTIFICATION.**

The views expressed in this research report accurately reflect the analyst's personal views about any and all of the subject securities or issuers; and no part of the research analyst's compensation was, is, or will be, directly or indirectly, related to the specific recommendations or views expressed in the report.

**DISCLAIMERS**

This research is based on information obtained from sources believed to be reliable, but we do not make any representation or warranty nor accept any responsibility or liability as to its accuracy, completeness or correctness. Opinions expressed are subject to change without notice. This document is prepared for general circulation. Any recommendations contained in this document does not have regard to the specific investment objectives, financial situation and the particular needs of any specific addressee. This document is not and should not be construed as an offer or a solicitation of an offer to purchase or subscribe or sell any securities. PT. Indo Premier Sekuritas or its affiliates may seek or will seek investment banking or other business relationships with the companies in this report.