

Technical Corner

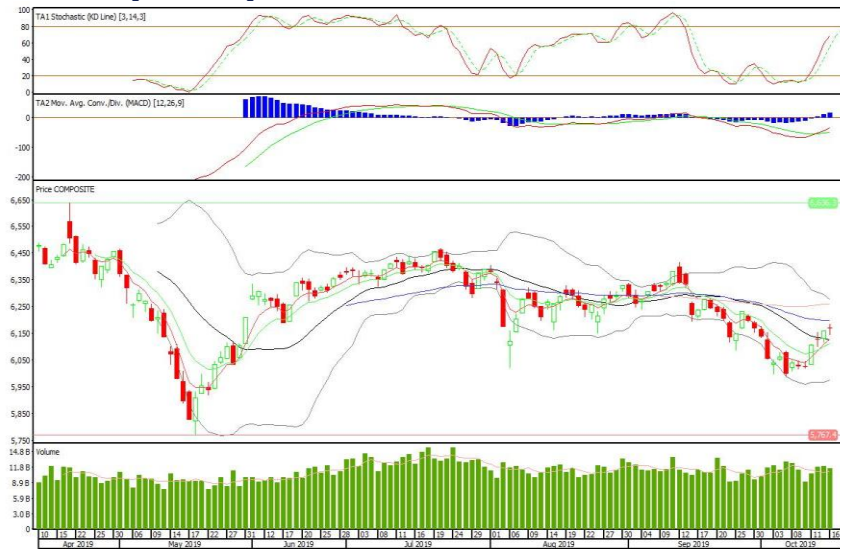
17 Oktober 2019

IHSG

Range: 6.135 - 6.200

---Indeks ditutup bertahan di atas MA20 dan membentuk pola doji yang merupakan sinyal indecision, stochastic netral dan MACD histogram divergence positif. Target kenaikan indeks pada level 6.200 kemudian 6.230 dengan *support* di level 6.135 dan 6.105.

IHSG (6.169)



Bank Rakyat Indonesia

Rekomendasi: Buy

---Candle ditutup di atas EMA5,10 dan membentuk pola white closing marubozu yang merupakan sinyal bullish continuation, stochastic netral dan MACD bullish cross over. Target kenaikan harga pada level 4.030 kemudian 4.080 dengan *support* di level 3.940, *cut loss* jika *break* 3.900.

BBRI (3.990)



Bank Pembangunan Daerah Jabar

Rekomendasi: Buy

---Candle ditutup di atas MA20 dan membentuk pola spinning top yang merupakan sinyal indecision, stochastic netral dan MACD histogram convergence positif. Target kenaikan harga pada level 1.685 kemudian 1.720 dengan *support* di level 1.640, *cut loss* jika *break* 1.615.

BJBR (1.665)



AKR Corporindo

Rekomendasi: Buy

---Candle ditutup di atas EMA5,10 dengan membentuk pola white opening marubozu yang merupakan sinyal bullish continuation, stochastic overbought, MACD histogram convergence positif. Target kenaikan harga pada level 4.280 kemudian 4.330 dengan *support* di level 4.180, *cut loss* jika *break* 4.130.

AKRA (4.230)

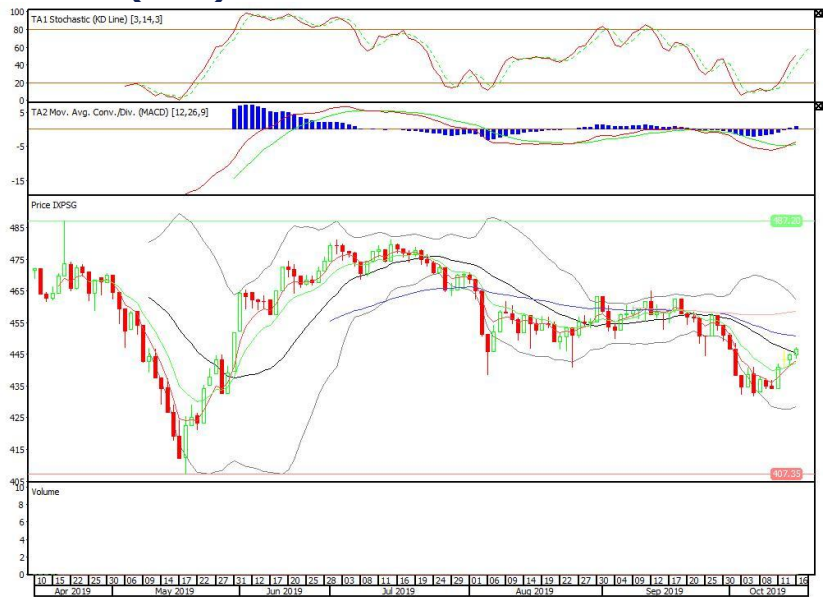


Pinnacle Indonesia ESG ETF

Rekomendasi: Buy

---Candle ditutup di atas EMA5,10 dengan membentuk pola long white marubozu yang merupakan sinyal bullish continuation, stochastic netral, MACD histogram divergence positif. Target kenaikan harga pada level 448 kemudian 450 dengan support di level 444, cut loss jika break 442.

XPSG (446)

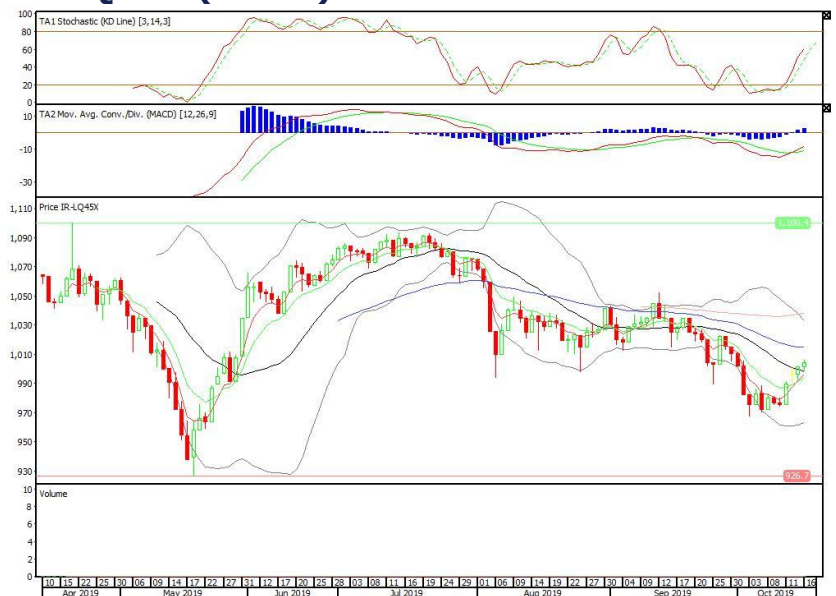


Premier ETF LQ-45

Rekomendasi: Buy

---Candle ditutup di atas MA20 dengan membentuk pola small bullish candle, stochastic netral, MACD histogram divergence positif. Target kenaikan harga pada level 1.007 kemudian 1.010 dengan support di level 1.001, cut loss jika break 998.

R-LQ45X (1.004)

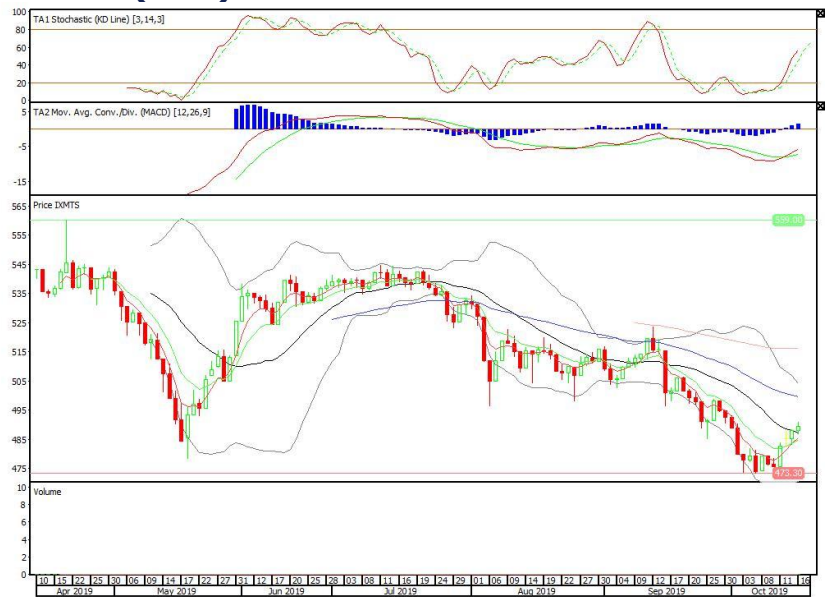


XMTS (489)

ETF MNC36 Likuid

Rekomendasi: Buy

---Candle ditutup di atas MA20 dengan membentuk pola small bullish candle, stochastic netral, MACD histogram divergence positif. Target kenaikan harga pada level 491 kemudian 493 dengan *support* di level 487, *cut loss* jika *break* 485.



Head Office**PT INDO PREMIER SEKURITAS**

Pacific Century Place 16/F, SCBD Lot 10
Jl. Jend. Sudirman Kav.52-53
Jakarta 12190 - Indonesia
p +62.21.5088.7200

ANALYSTS CERTIFICATION.

The views expressed in this research report accurately reflect the analyst's personal views about any and all of the subject securities or issuers; and no part of the research analyst's compensation was, is, or will be, directly or indirectly, related to the specific recommendations or views expressed in the report.

DISCLAIMERS

This research is based on information obtained from sources believed to be reliable, but we do not make any representation or warranty nor accept any responsibility or liability as to its accuracy, completeness or correctness. Opinions expressed are subject to change without notice. This document is prepared for general circulation. Any recommendations contained in this document does not have regard to the specific investment objectives, financial situation and the particular needs of any specific addressee. This document is not and should not be construed as an offer or a solicitation of an offer to purchase or subscribe or sell any securities. PT. Indo Premier Sekuritas or its affiliates may seek or will seek investment banking or other business relationships with the companies in this report.