

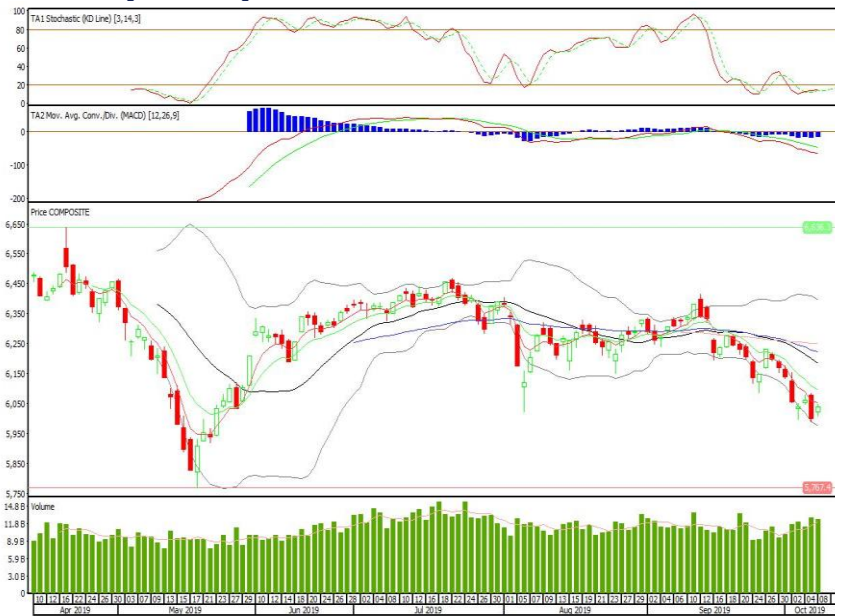
Technical Corner

IHSG

Range: 6.005 -6.070

---Indeks ditutup di bawah EMA5,10 dengan membentuk pola small bullish candle, stochastic oversold dan MACD histogram convergence negatif. Target pelemahan indeks pada level 6.005 kemudian 5.970 dengan *resist* di level 6.070 dan 6.105.

IHSG (6.039)



Ciputra Development

Rekomendasi: Buy

---Candle ditutup di atas EMA5,10 dan membentuk pola long white marubozu yang merupakan sinyal bullish continuation, stochastic netral dan MACD histogram divergence positif. Target kenaikan harga pada level 1.130 kemudian 1.160 dengan *support* di level 1.075, *cut loss* jika *break* 1.045.

CTRA (1.100)



Bumi Serpong Damai

Rekomendasi: Buy

---Candle ditutup dengan membentuk pola long white marubozu yang merupakan sinyal bullish continuation, stochastic golden cross dan MACD histogram convergence negatif. Target kenaikan harga pada level 1.365 kemudian 1.400 dengan *support* di level 1.290, *cut loss* jika *break* 1.255.

BSDE (1.325)



Mayora Indah

Rekomendasi: Buy

---Candle ditutup di atas EMA5,10 dengan membentuk pola long white marubozu yang merupakan sinyal bullish continuation, stochastic netral, MACD histogram divergence positif. Target kenaikan harga pada level 2.390 kemudian 2.440 dengan *support* di level 2.290, *cut loss* jika *break* 2.240.

MYOR (2.340)



ETF MNC36 Likuid

Rekomendasi: Buy

---Candle ditutup di atas lowerband dengan membentuk pola white marubozu yang merupakan sinyal bullish continuation, stochastic oversold, MACD histogram convergence negatif. Target kenaikan harga pada level 484 kemudian 489 dengan *support* di level 474, *cut loss* jika *break* 469.

XMTS (479)

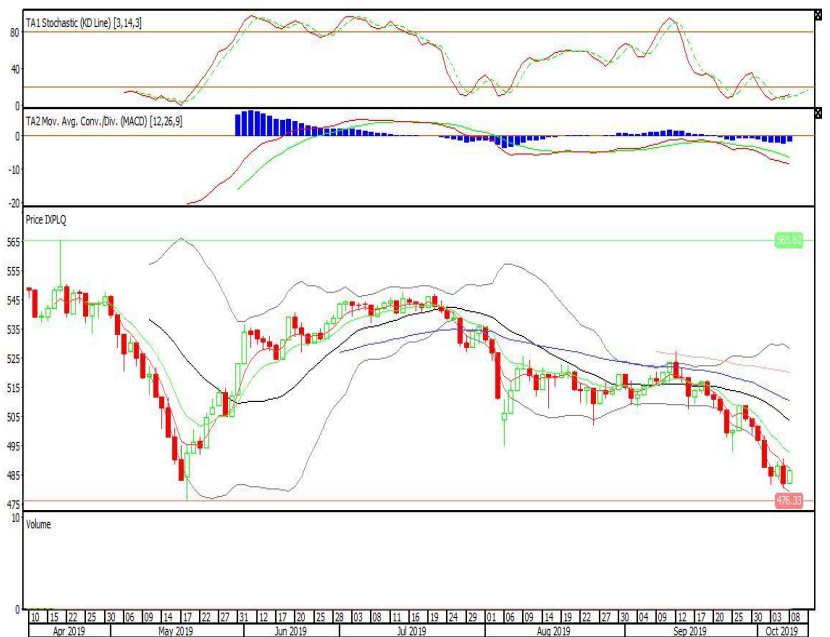


Pinnacle Enhanced Liquid ETF

Rekomendasi: Buy

---Candle ditutup di atas lowerband dengan membentuk pola white opening marubozu yang merupakan sinyal bullish continuation, stochastic oversold, MACD histogram convergence negatif. Target kenaikan harga pada level 490 kemudian 495 dengan *support* di level 482, *cut loss* jika *break* 477.

XPLQ (486)

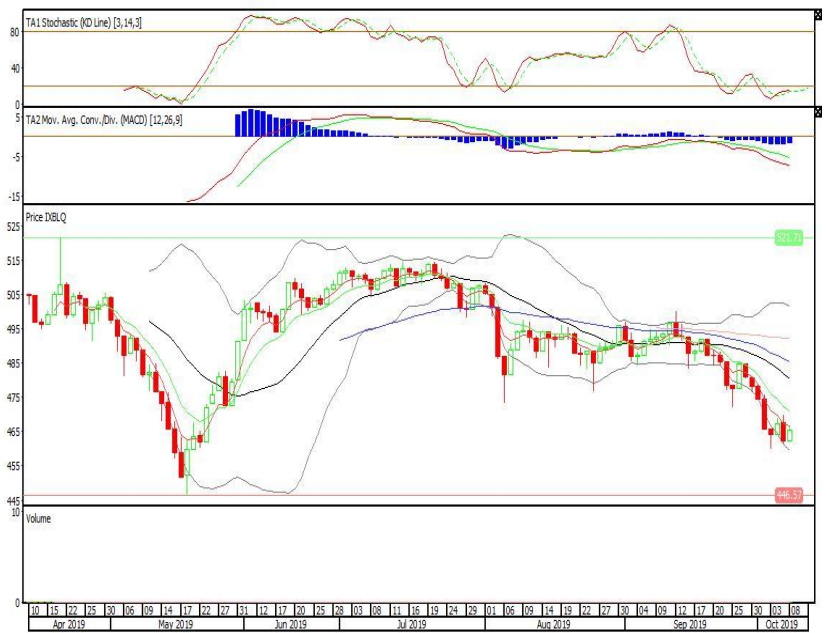


XBLQ (465)

Batavia Smart Liquid ETF

Rekomendasi: Buy

---Candle ditutup di atas lowerband dengan membentuk pola white opening marubozu yang merupakan sinyal bullish continuation, stochastic oversold, MACD histogram convergence negatif. Target kenaikan harga pada level 468 kemudian 471 dengan *support* di level 462, *cut loss* jika *break* 459.



Head Office**PT INDO PREMIER SEKURITAS**

Pacific Century Place 16/F, SCBD Lot 10

Jl. Jend. Sudirman Kav.52-53

Jakarta 12190 - Indonesia

p +62.21.5088.7200

ANALYSTS CERTIFICATION.

The views expressed in this research report accurately reflect the analyst's personal views about any and all of the subject securities or issuers; and no part of the research analyst's compensation was, is, or will be, directly or indirectly, related to the specific recommendations or views expressed in the report.

DISCLAIMERS

This research is based on information obtained from sources believed to be reliable, but we do not make any representation or warranty nor accept any responsibility or liability as to its accuracy, completeness or correctness. Opinions expressed are subject to change without notice. This document is prepared for general circulation. Any recommendations contained in this document does not have regard to the specific investment objectives, financial situation and the particular needs of any specific addressee. This document is not and should not be construed as an offer or a solicitation of an offer to purchase or subscribe or sell any securities. PT. Indo Premier Sekuritas or its affiliates may seek or will seek investment banking or other business relationships with the companies in this report.