

# Technical Corner

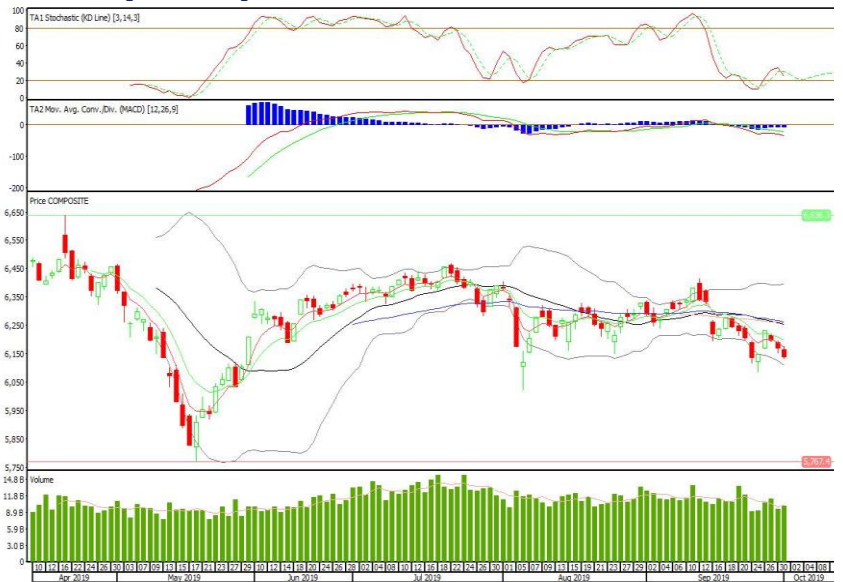
2 Oktober 2019

## IHSG

**Range: 6.105-6.175**

---Indeks ditutup dibawah EMA5,10 dan membentuk long black marubozu yang merupakan sinyal bearish continuation, stochastic netral dan MACD histogram divergence negatif. Target pelemahan indeks pada level 6.105 kemudian 6.070 dan *resist* di level 6.175 kemudian 6.210.

## IHSG (6.138)



## Surya Citra Media

**Rekomendasi: Buy**

---Candle ditutup di atas EMA5,10 dan membentuk pola white closing marubozu yang merupakan sinyal bullish continuation, stochastic oversold dan MACD histogram convergence negatif. Target kenaikan harga pada level 1.260 kemudian 1.315 dengan *support* di level 1.160, *cut loss* jika *break* 1.115.

## SCMA (1.210)



**Salim Invomas Pratama**

**Rekomendasi: Buy**

---Candle ditutup di atas EMA5,10 dan membentuk pola long white marubozu yang merupakan sinyal bullish continuation, stochastic oversold dan MACD histogram convergence negatif. Target kenaikan harga pada level 342 kemudian 348 dengan *support* di level 330, *cut loss* jika *break* 322.

**SIMP (336)**

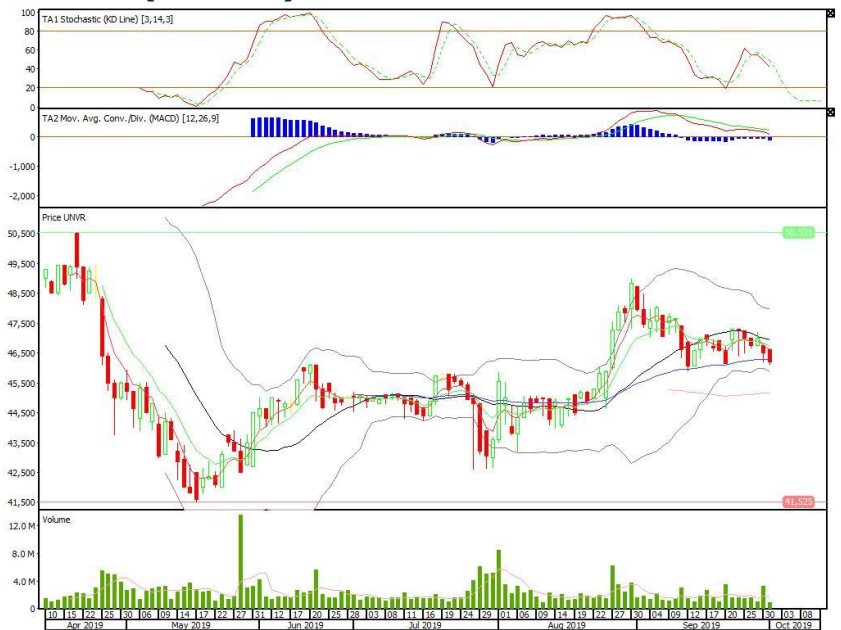


**Unilever Indonesia**

**Rekomendasi: Buy on Weakness**

---Candle ditutup di bawah EMA5,10 dengan membentuk pola long black marubozu yang merupakan sinyal bearish continuation, stochastic netral, MACD histogram divergence negatif. Target harga beli pada level 45.775 dengan *resist* di level 46.625 kemudian 47.050.

**UNVR (46.200)**

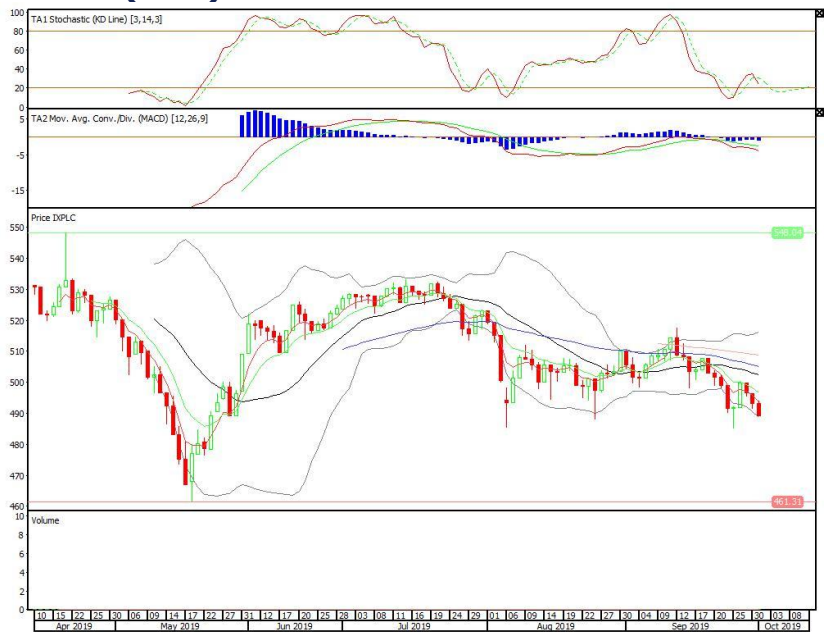


**Pinnacle Indonesia Large-Cap ETF**

**Rekomendasi: SELL**

---Candle ditutup di bawah EMA5,10 dengan membentuk pola black marubozu yang merupakan sinyal bearish continuation, stochastic netral, MACD histogram divergence negatif. Target pelemahan harga pada level 485 kemudian 481 dengan *resist* di level 493 dan 497.

**XPLC (489)**

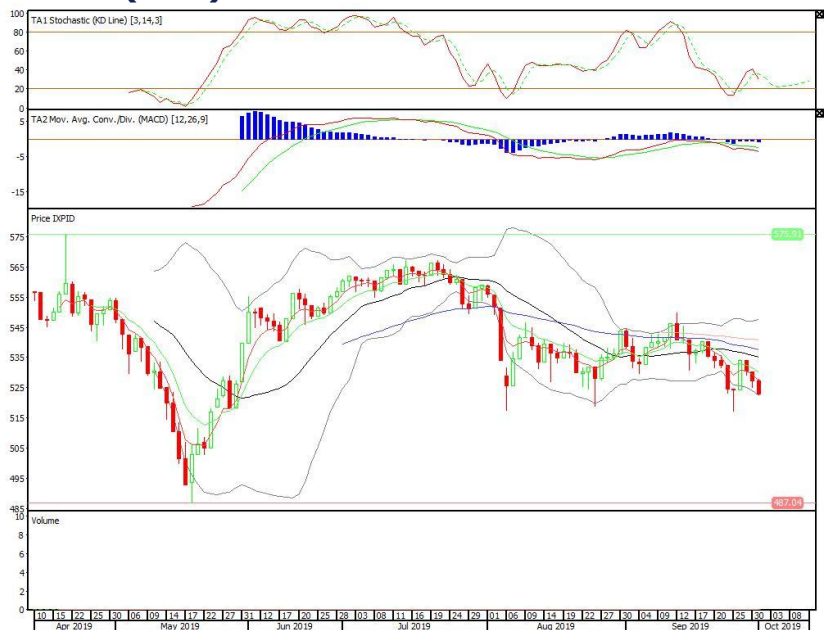


**Pinnacle IDX30 ETF**

**Rekomendasi: SELL**

---Candle ditutup di bawah EMA5,10 dengan membentuk pola black marubozu merupakan sinyal bearish continuation, stochastic netral, MACD histogram divergence negatif. Target pelemahan harga pada level 518 kemudian 513 dengan *resist* di level 527 dan 531.

**XPID (522)**

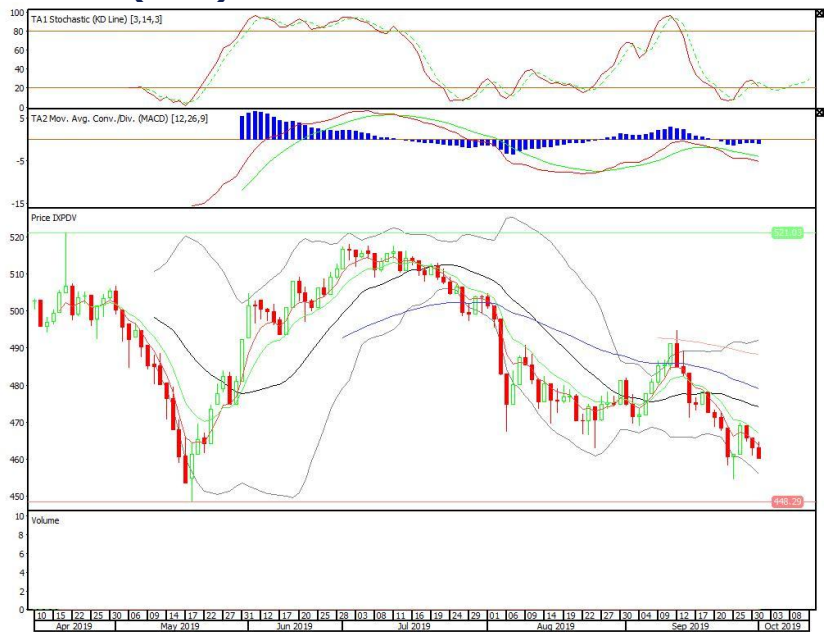


**Pinnacle Core High Dividend ETF**

**Rekomendasi: SELL**

---Candle ditutup di bawah EMA5,10 membentuk pola black closing marubozu yang merupakan sinyal bearish continuation, stochastic netral, MACD histogram divergence negatif. Target pelemahan harga pada level 457 kemudian 454 dengan *resist* di level 463 dan 465.

**XPDV (460)**



**Head Office****PT INDO PREMIER SEKURITAS**

Pacific Century Place 16/F, SCBD Lot 10  
Jl. Jend. Sudirman Kav.52-53  
Jakarta 12190 - Indonesia  
p +62.21.5088.7200

**ANALYSTS CERTIFICATION.**

The views expressed in this research report accurately reflect the analyst's personal views about any and all of the subject securities or issuers; and no part of the research analyst's compensation was, is, or will be, directly or indirectly, related to the specific recommendations or views expressed in the report.

**DISCLAIMERS**

This research is based on information obtained from sources believed to be reliable, but we do not make any representation or warranty nor accept any responsibility or liability as to its accuracy, completeness or correctness. Opinions expressed are subject to change without notice. This document is prepared for general circulation. Any recommendations contained in this document does not have regard to the specific investment objectives, financial situation and the particular needs of any specific addressee. This document is not and should not be construed as an offer or a solicitation of an offer to purchase or subscribe or sell any securities. PT. Indo Premier Sekuritas or its affiliates may seek or will seek investment banking or other business relationships with the companies in this report.