

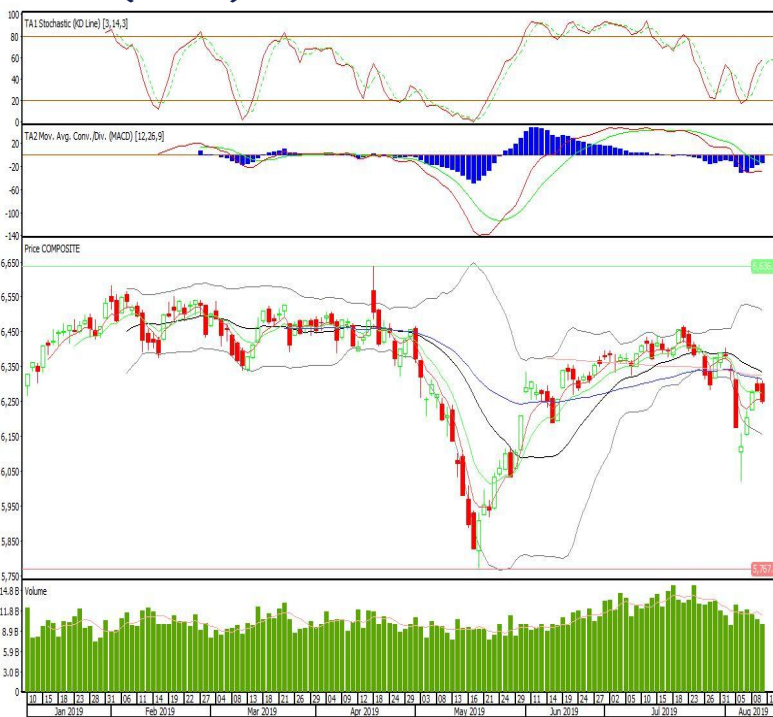
Technical Corner

IHSG

Range: 6.205-6.295

---Indeks ditutup di bawah EMA5,10 dan membentuk pola long black marubozu yang merupakan sinyal bearish continuation, stochastic netral dan MACD histogram convergence negatif. Target pelemahan indeks pada level 6.205 kemudian 6.165 dengan *resist* di level 6.295 dan 6.340.

IHSG (6.250)



Jasa Marga

Rekomendasi: Buy

---Candle ditutup di atas EMA5,10 dan membentuk pola white opening yang merupakan sinyal bullish continuation, stochastic netral, dan MACD histogram convergence negatif. Target kenaikan harga pada level 6.000 kemudian 6.125 dengan *support* di level 5.700, *cut loss* jika *break* 5.550.

JSMR (5.850)



Indocement Tunggal Prakarsa

Rekomendasi: Buy

---Candle ditutup di atas EMA5,10 dan membentuk pola small bullish, stochastic netral dan MACD histogram convergence negatif. Target kenaikan harga pada level 22.200 kemudian 22.500 dengan support di level 21.600, cut loss jika break 21.300.

INTP (21.925)



Erajaya Swasembada

Rekomendasi: Buy

---Candle ditutup di atas EMA5,10 dengan membentuk pola white opening marubozu yang merupakan sinyal bullish continuation, stochastic netral dan MACD histogram convergence negatif. Target kenaikan harga pada level 2.240 kemudian 2.400 dengan support di level 1.920, cut loss jika break 1.760.

ERAA (2.080)

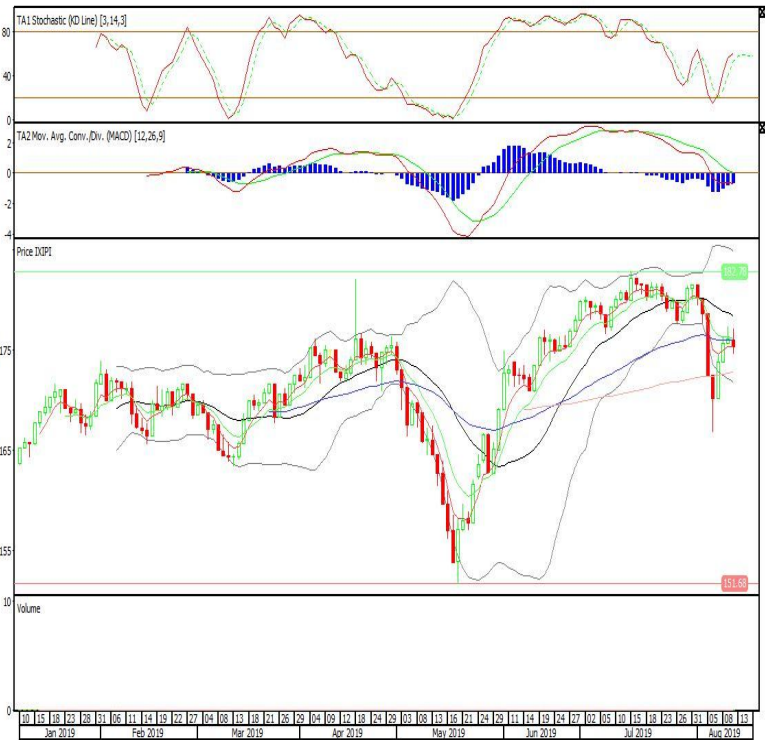


Premier ETF PEFINDO i-Grade

Rekomendasi: SELL

---Candle ditutup di bawah EMA5,10 dengan membentuk pola small bearish candle, stochastic netral, MACD histogram convergence negatif. Target pelemahan harga pada level 174 kemudian 173 dengan *resist* di level 176 dan 177.

XIPI (175)

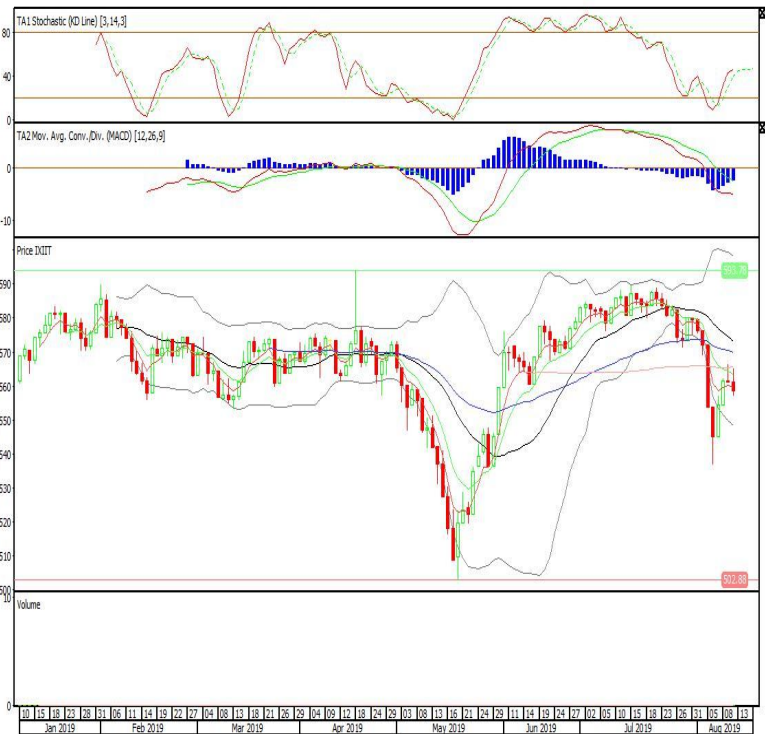


Premier ETF IDX30

Rekomendasi: SELL

---Candle ditutup di bawah EMA5,10 dengan membentuk pola long black marubozu yang merupakan sinyal bearish continuation, stochastic netral, MACD histogram convergence negatif. Target pelemahan harga pada level 556 kemudian 553 dengan *resist* di level 561 dan 563.

XIIT (558)

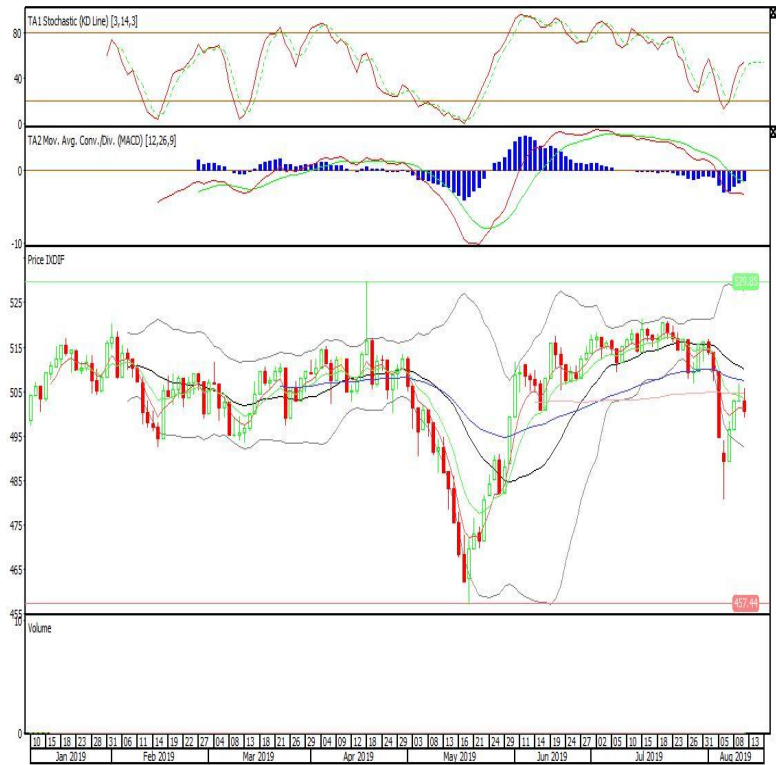


Danareksa ETF Indonesia Top 40

Rekomendasi: SELL

---Candle ditutup di bawah EMA5,10 dengan membentuk pola long black marubozu yang merupakan sinyal bearish continuation, stochastic netral, MACD histogram convergence negatif. Target pelemahan harga pada level 498 kemudian 495 dengan *resist* di level 502 dan 505.

XDIF (500)



Head Office**PT INDO PREMIER SEKURITAS**

Pacific Century Place 16th Floor SCBD Lot 10
Jl. Jend. Sudirman Kav. 52-53
Jakarta Selatan 12190 - Indonesia
p +62.21.5088.7200

ANALYSTS CERTIFICATION.

The views expressed in this research report accurately reflect the analyst's personal views about any and all of the subject securities or issuers; and no part of the research analyst's compensation was, is, or will be, directly or indirectly, related to the specific recommendations or views expressed in the report.

DISCLAIMERS

This research is based on information obtained from sources believed to be reliable, but we do not make any representation or warranty nor accept any responsibility or liability as to its accuracy, completeness or correctness. Opinions expressed are subject to change without notice. This document is prepared for general circulation. Any recommendations contained in this document does not have regard to the specific investment objectives, financial situation and the particular needs of any specific addressee. This document is not and should not be construed as an offer or a solicitation of an offer to purchase or subscribe or sell any securities. PT. Indo Premier Sekuritas or its affiliates may seek or will seek investment banking or other business relationships with the companies in this report.