

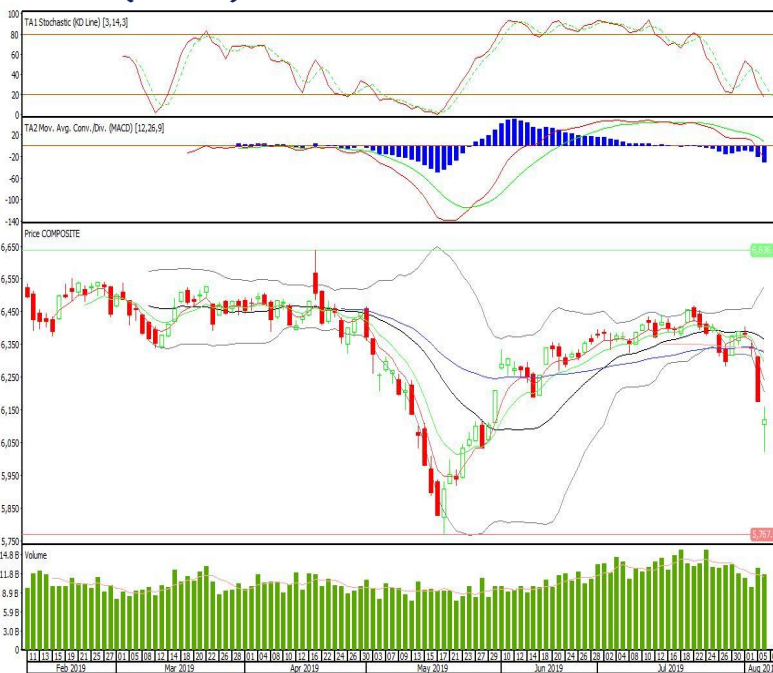
## Technical Corner

### IHSG

**Range: 6.075-6.160**

---Indeks dibuka dengan gap down dan membentuk pola spinning top yang merupakan sinyal indecision, stochastic oversold dan MACD histogram divergence negatif. Target kenaikan indeks pada level 6.160 kemudian 6.205 dengan *support* di level 6.075 dan 6.030.

### IHSG (6.119)



### Summarecon Agung

**Rekomendasi: Buy**

---Candle ditutup di atas EMA50 dan membentuk pola long white marubozu yang merupakan sinyal bullish continuation, stochastic netral sedangkan MACD histogram divergence negatif. Target kenaikan harga pada level 1.290 kemudian 1.325 dengan *support* di level 1.200, *cut loss* jika *break* 1.150.

### SMRA (1.245)



**Unilever Indonesia**

**Rekomendasi: Buy**

---Candle ditutup dengan membentuk pola long white marubozu yang merupakan sinyal bullish continuation, stochastic netral dan MACD histogram convergence negatif. Target kenaikan harga pada level 44.950 kemudian 45.600 dengan support di level 43.750, cut loss jika break 43.200.

**UNVR (44.325)**



**Indofood Sukses Makmur**

**Rekomendasi: Buy**

---Candle ditutup di atas EMA10 dengan membentuk pola long white marubozu yang merupakan sinyal bullish continuation, stochastic netral dan MACD histogram convergence positif. Target kenaikan harga pada level 7.125 kemudian 7.200 dengan support di level 6.975, cut loss jika break 6.900.

**IINDF (7.050)**

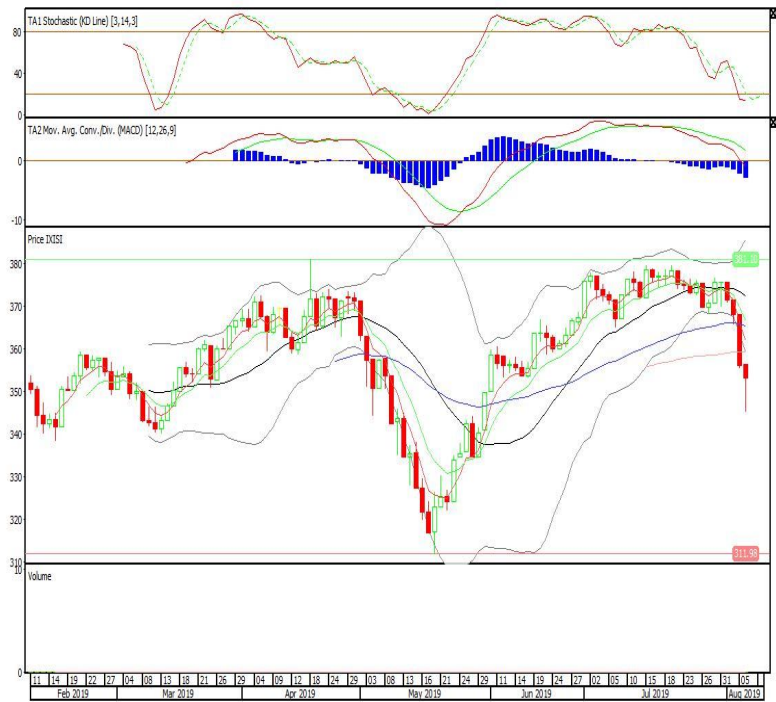


Premier ETF SMinfra18

**Rekomendasi: SELL**

---Candle ditutup di bawah MA100 dengan membentuk pola black opening marubozu yang merupakan sinyal bearish continuation, stochastic oversold, MACD histogram divergence negatif. Target pelemahan harga pada level 350 kemudian 347 dengan *resist* di level 356 dan 359.

**XISI (353)**

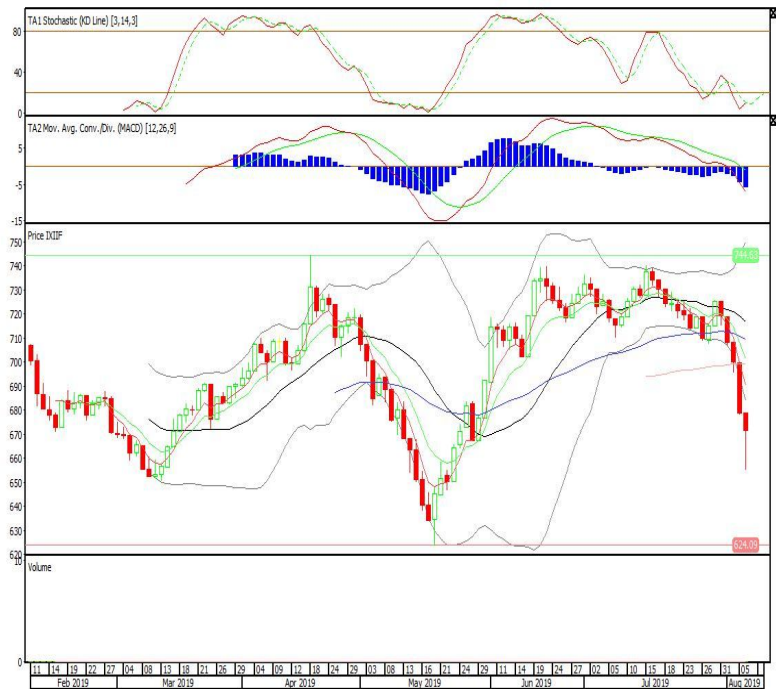


Premier ETF Indonesia Financial

**Rekomendasi: SELL**

---Candle ditutup di bawah lowerband dengan membentuk pola black opening marubozu yang merupakan sinyal bearish continuation, stochastic oversold, MACD histogram divergence negatif. Target pelemahan harga pada level 664 kemudian 657 dengan *resist* di level 678 dan 685.

**XIIF (671)**

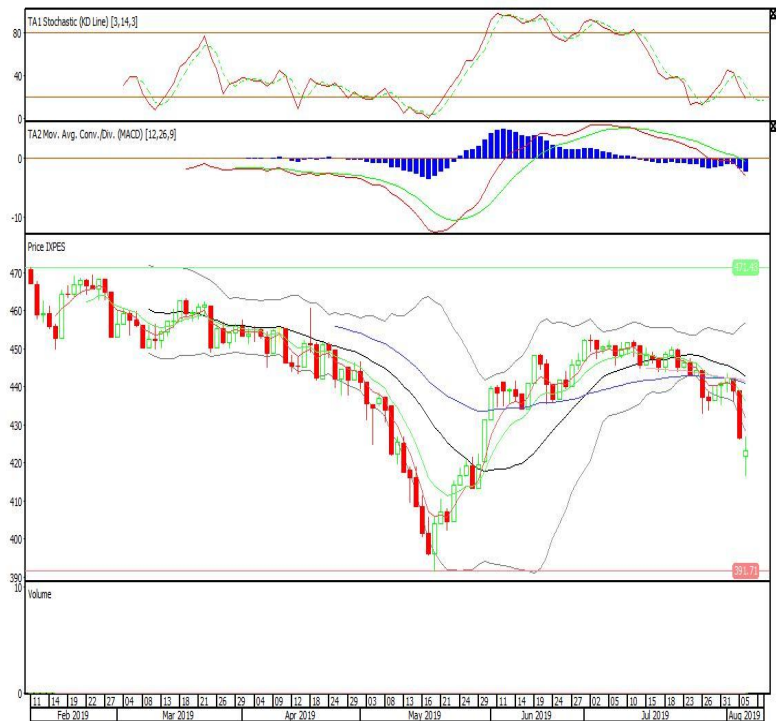


**Pinnacle Enhanced Sharia ETF**

**Rekomendasi: SELL**

---Candle ditutup di bawah lowerband dengan membentuk pola small bullish candle, stochastic oversold, MACD histogram divergence negatif. Target pelemahan harga pada level 416 kemudian 409 dengan *resist* di level 426 dan 432.

**XPES (423)**



**Head Office****PT INDO PREMIER SEKURITAS**

Wisma GKBI 7/F Suite 718

Jl. Jend. Sudirman No.28

Jakarta 10210 - Indonesia

p +62.21.5793.1168

f +62.21.5793.1167

**ANALYSTS CERTIFICATION.**

The views expressed in this research report accurately reflect the analyst's personal views about any and all of the subject securities or issuers; and no part of the research analyst's compensation was, is, or will be, directly or indirectly, related to the specific recommendations or views expressed in the report.

**DISCLAIMERS**

This research is based on information obtained from sources believed to be reliable, but we do not make any representation or warranty nor accept any responsibility or liability as to its accuracy, completeness or correctness. Opinions expressed are subject to change without notice. This document is prepared for general circulation. Any recommendations contained in this document does not have regard to the specific investment objectives, financial situation and the particular needs of any specific addressee. This document is not and should not be construed as an offer or a solicitation of an offer to purchase or subscribe or sell any securities. PT. Indo Premier Sekuritas or its affiliates may seek or will seek investment banking or other business relationships with the companies in this report.