

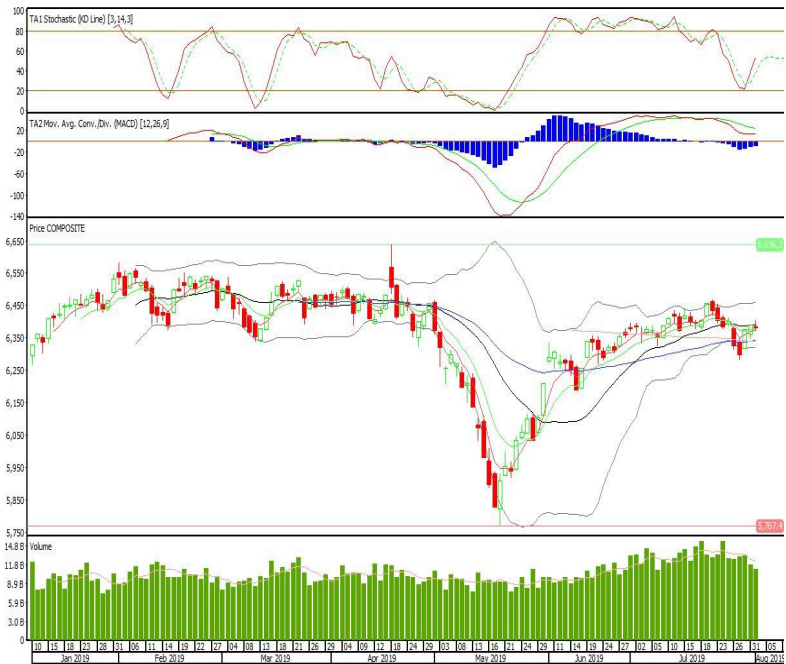
## Technical Corner

### IHSG

**Range: 6.350-6.415**

---Indeks ditutup dengan membentuk pola doji yang merupakan sinyal indecision, stochastic netral dan MACD histogram convergence negatif. Target pelemahan indeks pada level 6.350 kemudian 6.320 dengan *resist* di level 6.415 dan 6.445.

### IHSG (6.381)

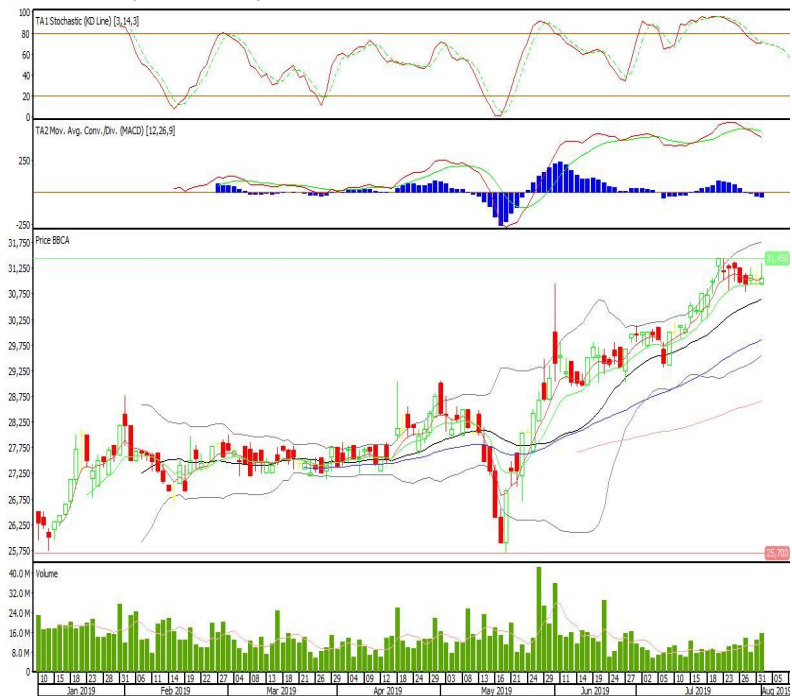


### Bank Central Asia

**Rekomendasi: Buy**

---Candle ditutup di atas EMA5,10 dan membentuk pola inverted hammer yang merupakan sinyal bullish reversal, stochastic golden cross sedangkan MACD histogram divergence negatif. Target kenaikan harga pada level 31.325 kemudian 31.675 dengan *support* di level 30.725, *cut loss* jika *break* 30.400.

### BBCA (31.050)



Media Nusantara Citra

**Rekomendasi: Buy**

---Candle ditutup bertahan di atas MA20 dan membentuk pola harami yang merupakan sinyal bullish reversal, stochastic netral sedangkan MACD divergence negatif. Target kenaikan harga pada level 1.420 kemudian 1.455 dengan *support* di level 1.355, *cut loss* jika *break* 1.325.

**MNCN (1.390)**



Ciputra Development

**Rekomendasi: Buy**

---Candle ditutup tepat pada EMA10 dengan membentuk pola small bullish candle, stochastic netral dan MACD histogram convergence positif. Target kenaikan harga pada level 1.265 kemudian 1.280 dengan *support* di level 1.235, *cut loss* jika *break* 1.220.

**CTRA (1.250)**

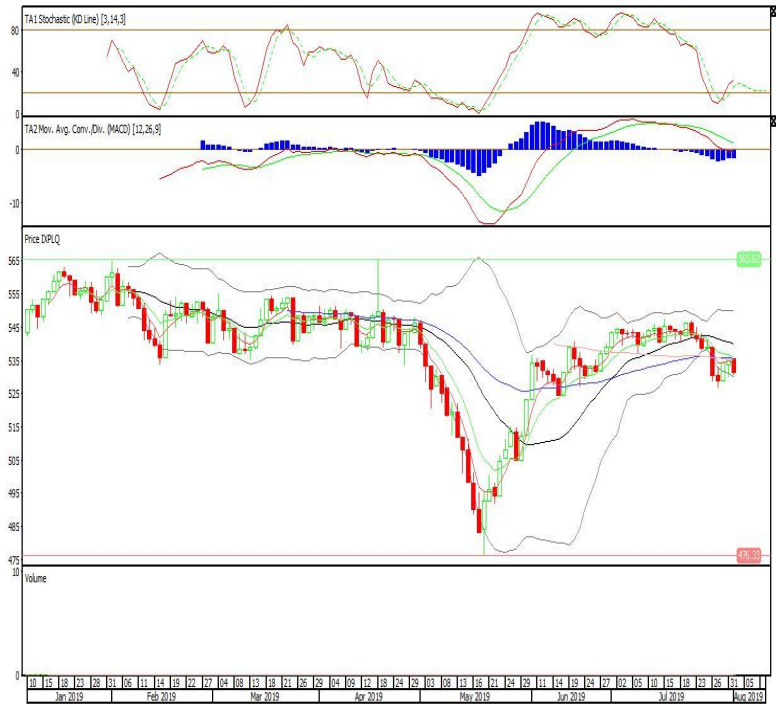


**Pinnacle Enhanced Liquid ETF**

**Rekomendasi: SELL**

---Candle ditutup di bawah EMA5,10 dengan membentuk pola black opening marubozu yang merupakan sinyal bearish continuation, stochastic netral, MACD histogram divergence negatif. Target pelemahan harga pada level 527 kemudian 523 dengan resist di level 535 dan 539.

**XPLQ (531)**

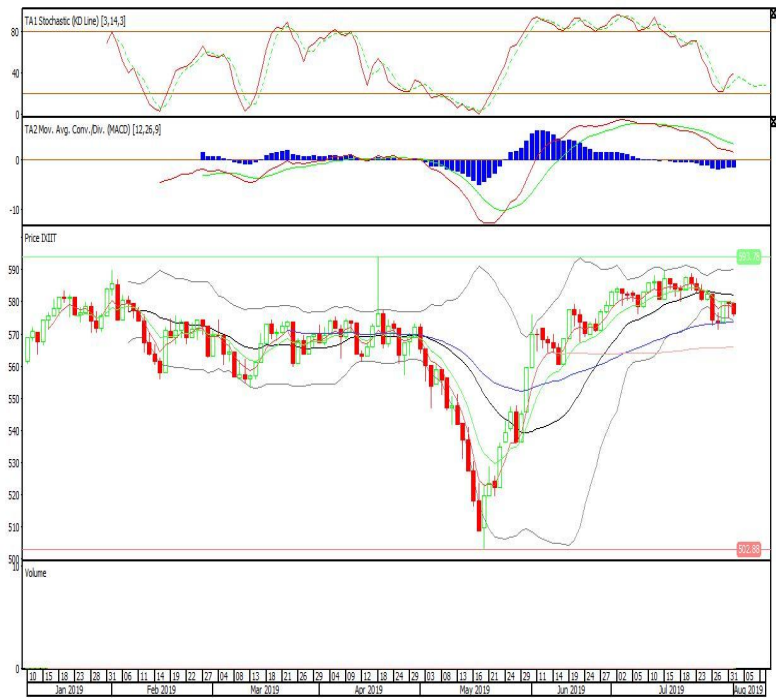


**Premier ETF IDX30**

**Rekomendasi: SELL**

---Candle ditutup di bawah EMA5,10 dengan membentuk pola black opening marubozu yang merupakan sinyal bearish continuation, stochastic netral, MACD histogram divergence negatif. Target pelemahan harga pada level 573 kemudian 569 dengan resist di level 579 dan 582.

**XIIT (576)**

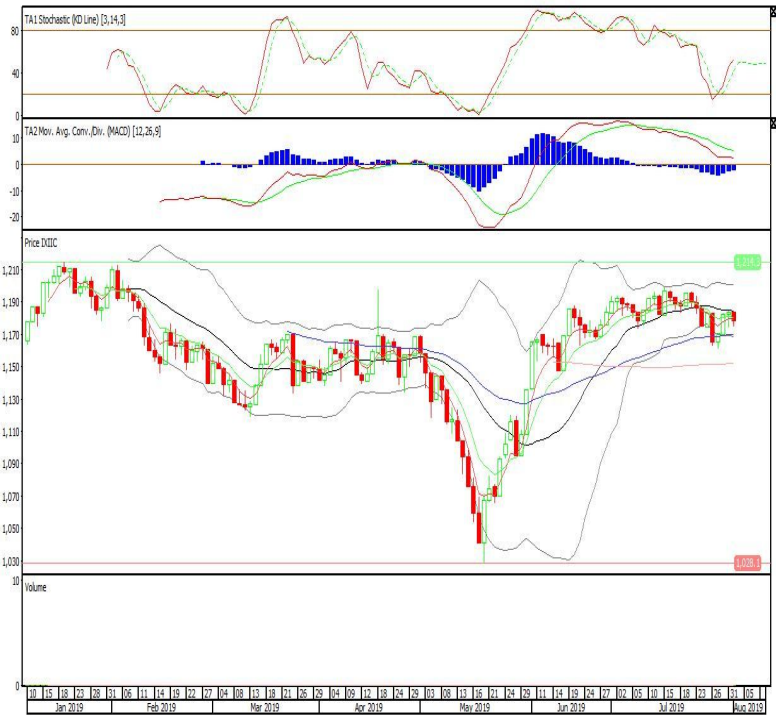


Premier ETF Indonesia Consumer

**Rekomendasi: SELL**

---Candle ditutup di bawah EMA5,10 dengan membentuk pola black opening marubozu yang merupakan sinyal bearish continuation, stochastic netral, MACD histogram convergence negatif. Target pelemahan harga pada level 1.173 kemudian 1.167 dengan resist di level 1.183 dan 1.189.

**XIIC (1.178)**



**Head Office****PT INDO PREMIER SEKURITAS**

Wisma GKBI 7/F Suite 718

Jl. Jend. Sudirman No.28

Jakarta 10210 - Indonesia

p +62.21.5793.1168

f +62.21.5793.1167

**ANALYSTS CERTIFICATION.**

The views expressed in this research report accurately reflect the analyst's personal views about any and all of the subject securities or issuers; and no part of the research analyst's compensation was, is, or will be, directly or indirectly, related to the specific recommendations or views expressed in the report.

**DISCLAIMERS**

This research is based on information obtained from sources believed to be reliable, but we do not make any representation or warranty nor accept any responsibility or liability as to its accuracy, completeness or correctness. Opinions expressed are subject to change without notice. This document is prepared for general circulation. Any recommendations contained in this document does not have regard to the specific investment objectives, financial situation and the particular needs of any specific addressee. This document is not and should not be construed as an offer or a solicitation of an offer to purchase or subscribe or sell any securities. PT. Indo Premier Sekuritas or its affiliates may seek or will seek investment banking or other business relationships with the companies in this report.