

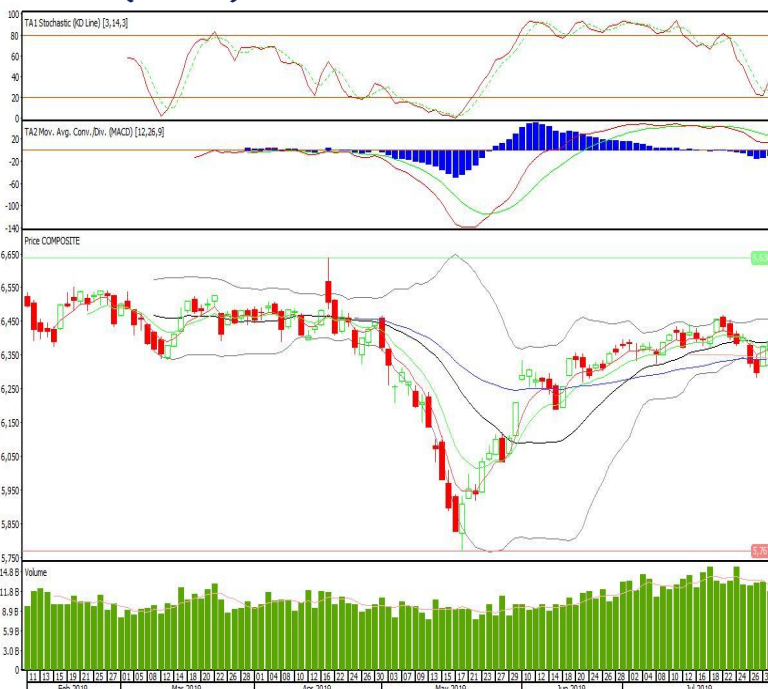
Technical Corner

IHSG

Range: 6.350-6.425

---Indeks ditutup di atas MA20 dan membentuk pola white closing marubozu yang merupakan sinyal bullish continuation, stochastic netral dan MACD histogram convergence negatif. Target kenaikan indeks pada level 6.425 kemudian 6.455 dengan support di level 6.350 dan 6.320.

IHSG (6.390)



Unilever Indonesia

Rekomendasi: Buy

---Candle ditutup dengan membentuk pola long white marubozu yang merupakan sinyal bullish continuation, stochastic netral sedangkan MACD histogram divergence negatif. Target kenaikan harga pada level 44.300 kemudian 44.875 dengan support di level 42.950, cut loss jika break 42.350.

UNVR (43.600)



Indofood CBP Sukses Makmur

Rekomendasi: Buy

---Candle ditutup di atas EMA5,10 dan membentuk pola doji yang merupakan sinyal indecision, stochastic golden cross dan MACD bullish cross over. Target kenaikan harga pada level 10.825 kemudian 10.975 dengan *support* di level 10.575, *cut loss* jika *break* 10.450.

ICBP (10.700)



Pabrik Kertas Tjiwi Kimia

Rekomendasi: Buy

---Candle ditutup di atas EMA5 dengan membentuk pola long white marubozu yang merupakan sinyal bullish continuation, stochastic netral dan MACD histogram convergence negatif. Target kenaikan harga pada level 12.500 kemudian 13.000 dengan *support* di level 11.500, *cut loss* jika *break* 11.000.

TKIM (12.000)

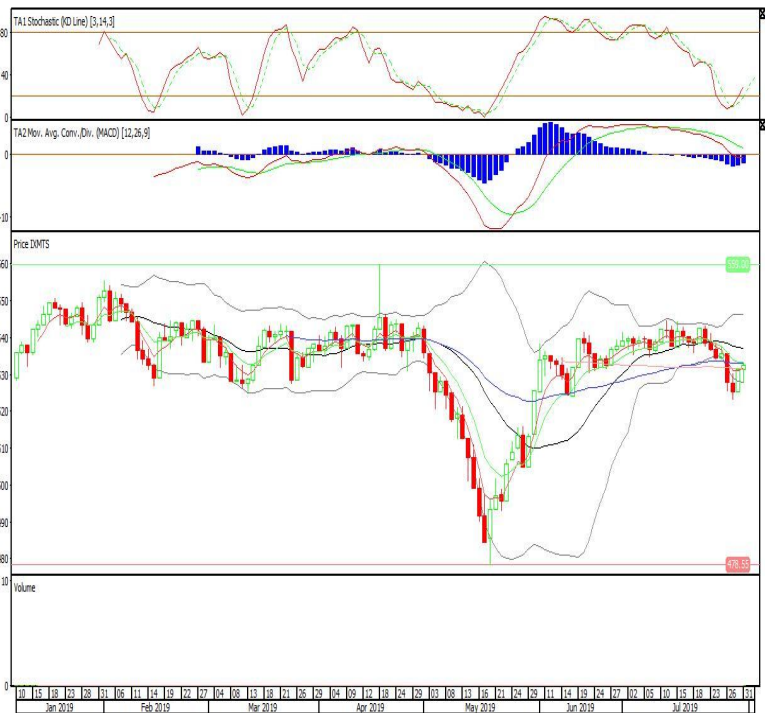


ETF MNC36 Likuid

Rekomendasi: Buy

---Candle ditutup di atas EMA5 dengan membentuk pola spinning top yang merupakan sinyal indecision, stochastic netral, MACD histogram convergence negatif. Target kenaikan harga pada level 534 kemudian 536 dengan *support* di level 530, *cut loss* jika *break* 528.

XMTS (532)

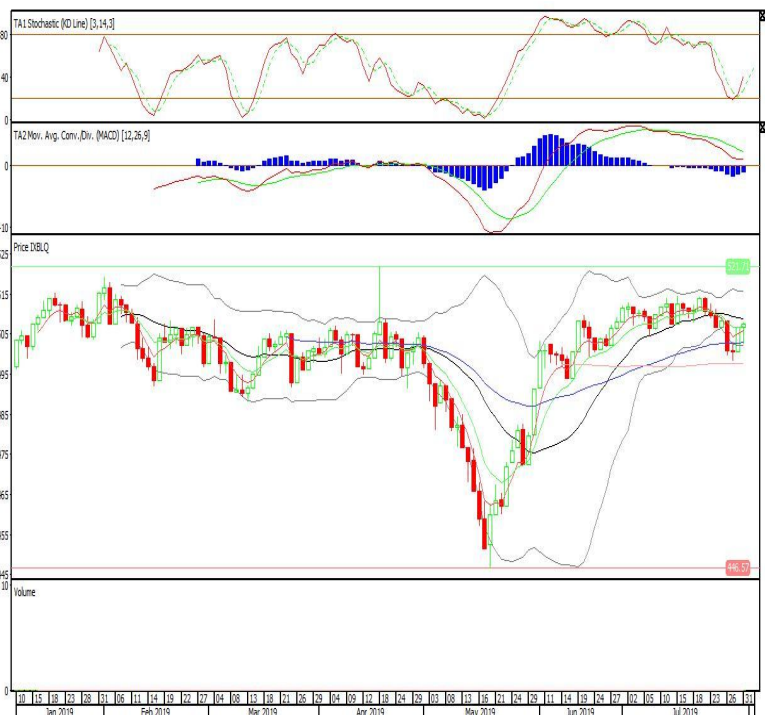


Batavia Smart Liquid ETF

Rekomendasi: Buy

---Candle ditutup di atas EMA5,10 dengan membentuk pola spinning top yang merupakan sinyal indecision, stochastic netral, MACD histogram convergence negatif. Target kenaikan harga pada level 508 kemudian 510 dengan *support* di level 506, *cut loss* jika *break* 504.

XBLQ (507)

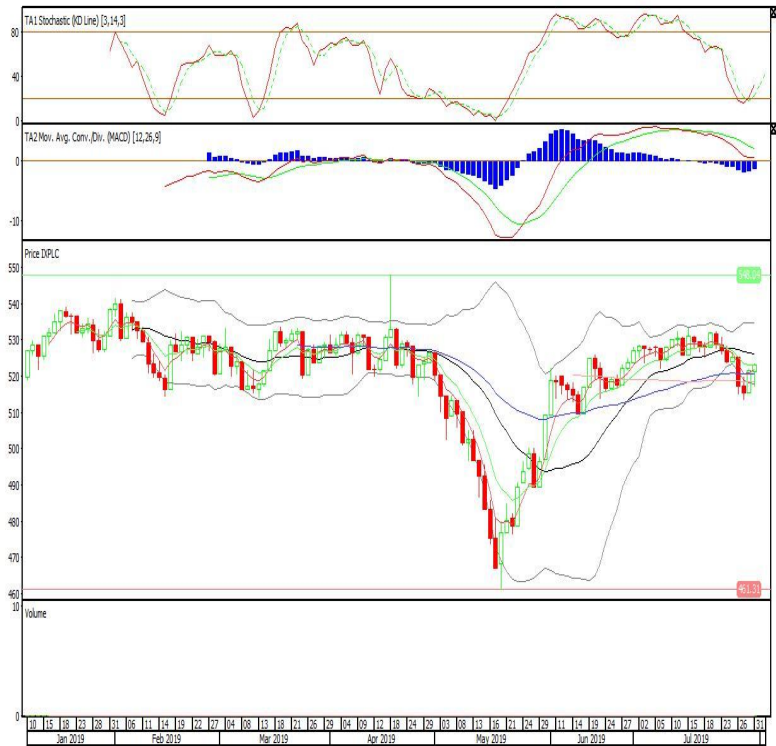


Pinnacle Indonesia Large-Cap ETF

Rekomendasi: Buy

---Candle ditutup tepat pada EMA10 dengan membentuk pola small bullish candle, stochastic netral, MACD histogram convergence negatif. Target kenaikan harga pada level 525 kemudian 527 dengan *support* di level 520, *cut loss* jika *break* 518.

XPLC (523)



Head Office**PT INDO PREMIER SEKURITAS**

Wisma GKBI 7/F Suite 718

Jl. Jend. Sudirman No.28

Jakarta 10210 - Indonesia

p +62.21.5793.1168

f +62.21.5793.1167

ANALYSTS CERTIFICATION.

The views expressed in this research report accurately reflect the analyst's personal views about any and all of the subject securities or issuers; and no part of the research analyst's compensation was, is, or will be, directly or indirectly, related to the specific recommendations or views expressed in the report.

DISCLAIMERS

This research is based on information obtained from sources believed to be reliable, but we do not make any representation or warranty nor accept any responsibility or liability as to its accuracy, completeness or correctness. Opinions expressed are subject to change without notice. This document is prepared for general circulation. Any recommendations contained in this document does not have regard to the specific investment objectives, financial situation and the particular needs of any specific addressee. This document is not and should not be construed as an offer or a solicitation of an offer to purchase or subscribe or sell any securities. PT. Indo Premier Sekuritas or its affiliates may seek or will seek investment banking or other business relationships with the companies in this report.