

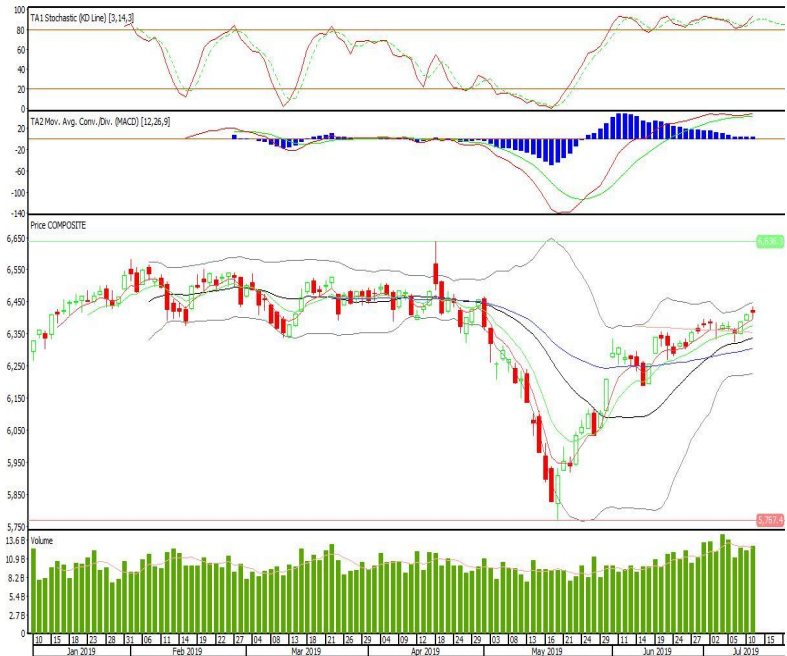
# Technical Corner

**IHSG**

**Range: 6.385-6.450**

---Indeks bertahan di atas EMA5,10 dan membentuk pola small bearish candle, stochastic konsisten bergerak di area overbought dan MACD histogram convergence positif. Target kenaikan indeks pada level 6.450 kemudian 6.480 dengan support di level 6.385 dan 6.355.

**IHSG (6.417)**



**Bumi Serpong Damai**

**Rekomendasi: Buy**

---Candle ditutup di atas EMA5,10 dan membentuk pola small bullish candle, stochastic netral dan MACD histogram convergence negatif. Target kenaikan harga pada level 1.515 kemudian 1.535 dengan support di level 1.480, cut loss jika break 1.465.

**BSDE (1.500)**



**Agung Podomoro Land**

**Rekomendasi: Buy**

---Candle di tutup di atas EMA5,10 dan membentuk pola long white marubozu yang merupakan sinyal bullish continuation, stochastic netral dan MACD histogram convergence negatif. Target kenaikan harga pada level 264 kemudian 276 dengan support di level 240, cut loss jika break 228.

**APLN (252)**

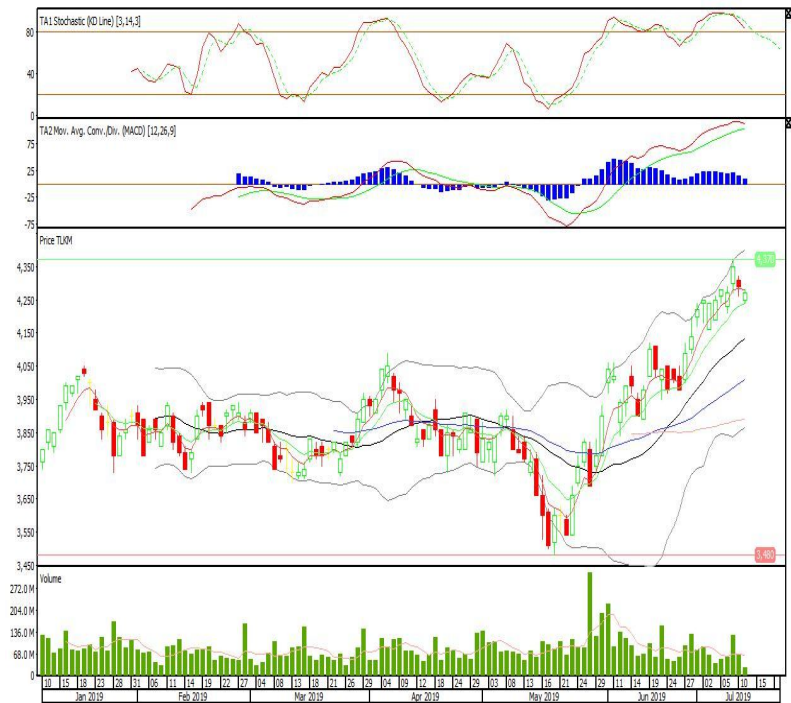


**Telekomunikasi Indonesia**

**Rekomendasi: Buy on Weakness**

---Candle ditutup diatas EMA10 dengan membentuk pola small bullish candle, stochastic oversold, MACD histogram convergence positif. Target harga beli pada level 4.230 dengan resist di level 4.300 dan 4.330.

**TLKM (4.270)**

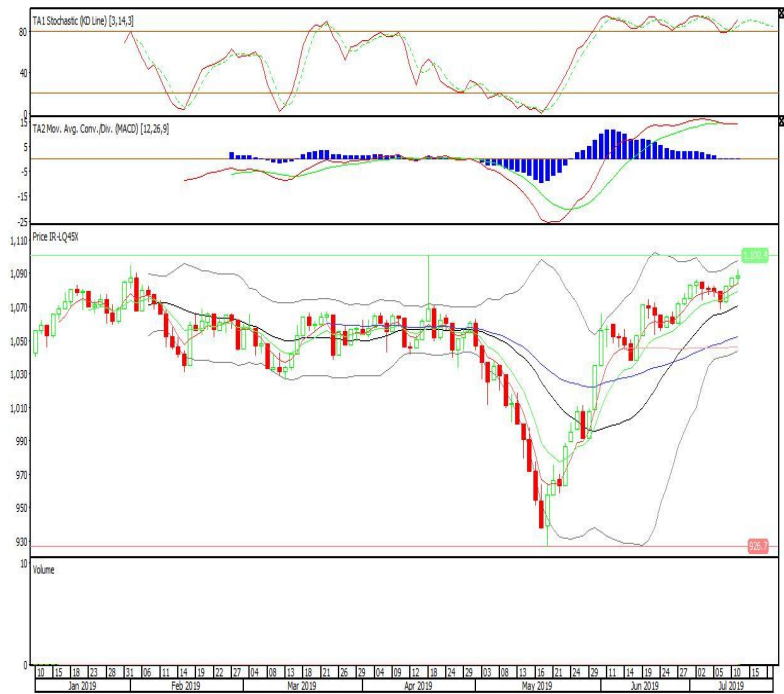


**Premier ETF LQ-45**

**Rekomendasi: Buy**

---Candle bertahan diatas EMA5,10 dengan membentuk pola spinning top yang merupakan sinyal indecision, stochastic oversold, MACD histogram convergence positif. Target kenaikan harga pada level 1.093 kemudian 1.097 dengan *support* di level 1.082, *cut loss* jika *break* 1.077.

**R-LQ45X (1.088)**

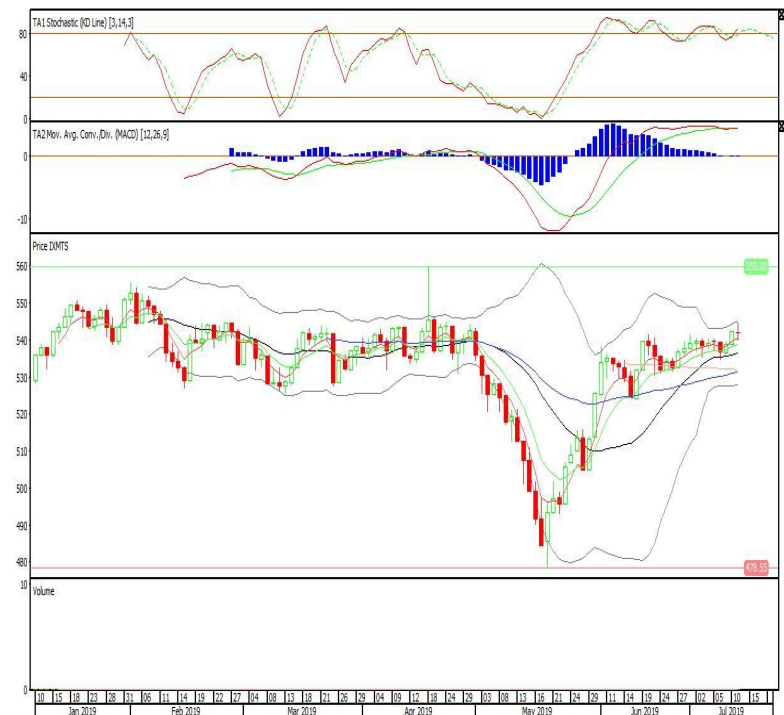


**ETF MNC36 Likuid**

**Rekomendasi: Buy**

---Candle bertahan diatas EMA5,10 dengan membentuk pola doji yang merupakan sinyal indecision, stochastic overbought, MACD histogram convergence positif. Target kenaikan harga pada level 544 kemudian 547 dengan *support* di level 539, *cut loss* jika *break* 537.

**XMTS (542)**

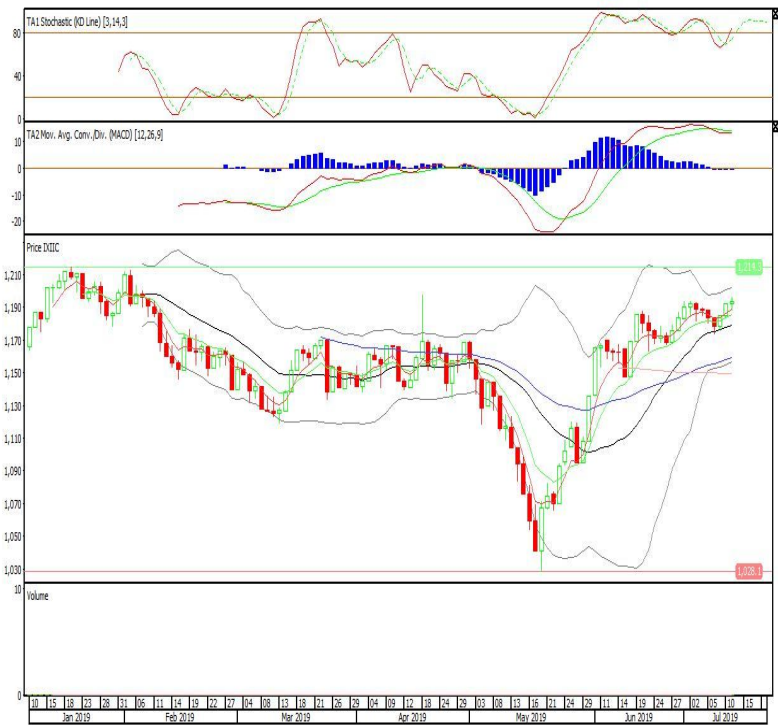


Premier ETF Indonesia Consumer

**Rekomendasi: Buy**

---Candle bertahan diatas EMA5,10 dengan membentuk pola spinning top yang merupakan sinyal indecision, stochastic oversold, MACD histogram convergence negatif. Target kenaikan harga pada level 1.198 kemudian 1.203 dengan support di level 1.187, cut loss jika break 1.182.

**XIIC (1.193)**



**Head Office****PT INDO PREMIER SEKURITAS**

Wisma GKBI 7/F Suite 718

Jl. Jend. Sudirman No.28

Jakarta 10210 - Indonesia

p +62.21.5793.1168

f +62.21.5793.1167

**ANALYSTS CERTIFICATION.**

The views expressed in this research report accurately reflect the analyst's personal views about any and all of the subject securities or issuers; and no part of the research analyst's compensation was, is, or will be, directly or indirectly, related to the specific recommendations or views expressed in the report.

**DISCLAIMERS**

This research is based on information obtained from sources believed to be reliable, but we do not make any representation or warranty nor accept any responsibility or liability as to its accuracy, completeness or correctness. Opinions expressed are subject to change without notice. This document is prepared for general circulation. Any recommendations contained in this document does not have regard to the specific investment objectives, financial situation and the particular needs of any specific addressee. This document is not and should not be construed as an offer or a solicitation of an offer to purchase or subscribe or sell any securities. PT. Indo Premier Sekuritas or its affiliates may seek or will seek investment banking or other business relationships with the companies in this report.