

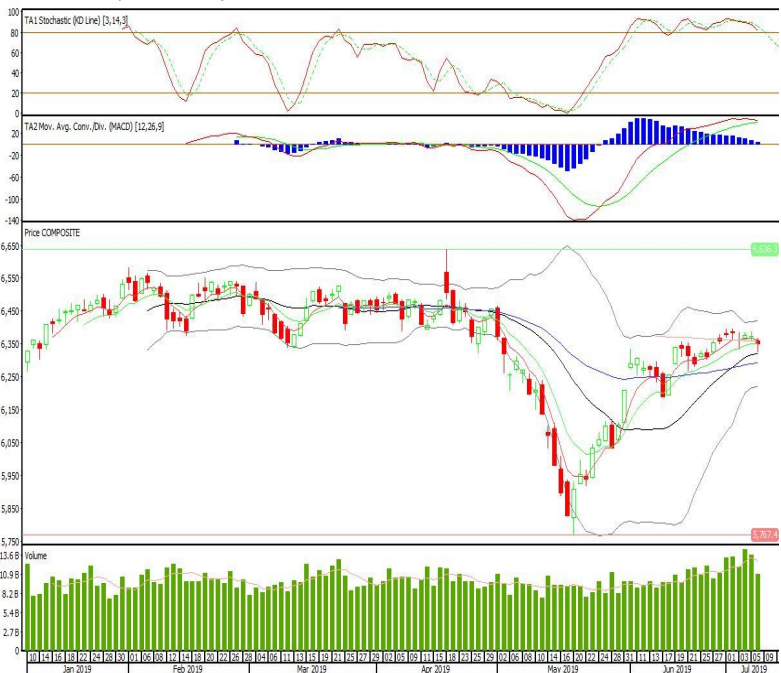
Technical Corner

IHSG

Range: 6.320-6.380

---Indeks ditutup di bawah EMA5 dan membentuk pola small bearish candle, stochastic overbought dan MACD histogram convergence positif. Target pelemahan indeks pada level 6.320 kemudian 6.290 dengan *resist* di level 6.380 dan 6.410.

IHSG (6.351)

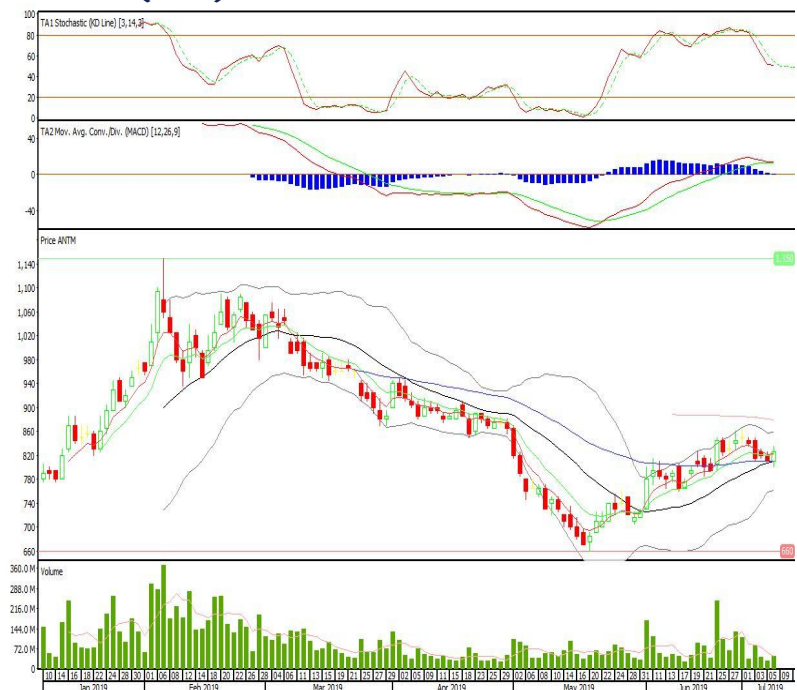


Aneka Tambang

Rekomendasi: Buy

---Candle ditutup di atas EMA5,10 dan membentuk pola long white marubozu yang merupakan sinyal bullish continuation, stochastic netral dan MACD histogram convergence positif. Target kenaikan harga pada level 845 kemudian 865 dengan *support* di level 805, *cut loss* jika *break* 790.

ANTM (825)



Astra International

Rekomendasi: Buy

---Candle di tutup di atas EMA5 dan membentuk pola long white marubozu yang merupakan sinyal bullish continuation, stochastic golden cross dan MACD histogram convergence negatif. Target kenaikan harga pada level 7.400 kemudian 7.500 dengan *support* di level 7.200, *cut loss* jika *break* 7.100.

ASII (7.300)



Wijaya Karya

Rekomendasi: Buy

---Candle ditutup diatas EMA50 dengan membentuk pola long white marubozu yang merupakan sinyal bullish continuation, stochastic netral, MACD histogram divergence negatif. Target kenaikan harga pada level 2.440 kemudian 2.510 dengan *support* di level 2.300, *cut loss* jika *break* 2.230.

WIKA (2.370)

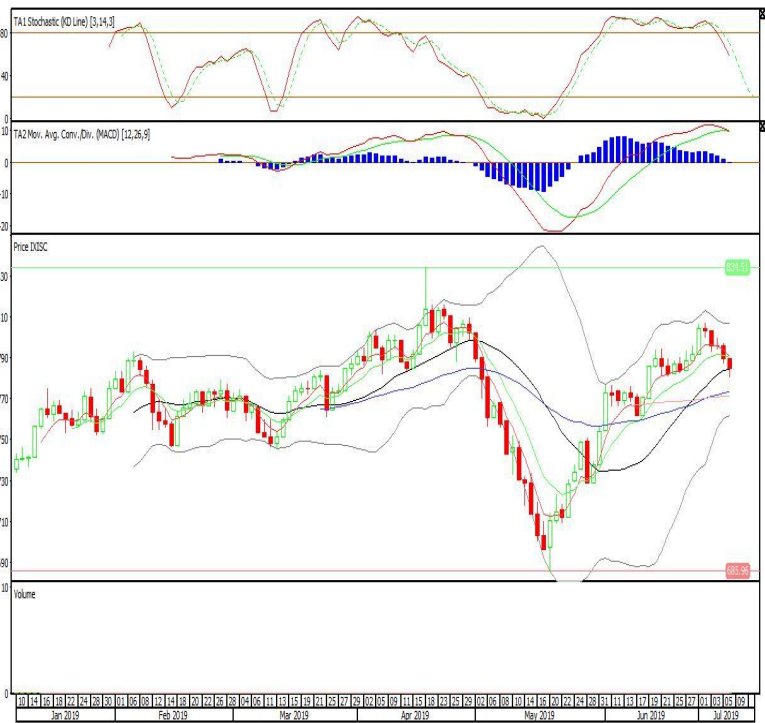


Premier ETF Indonesia Stated-Owned Companies

Rekomendasi: SELL

---Candle ditutup dibawah EMA5,10 dengan membentuk pola black opening marubozu yang merupakan sinyal bearish continuation, stochastic netral, MACD histogram convergence positif. Target pelemahan harga pada level 780 kemudian 775 dengan resist di level 789 dan 794.

XISC (784)

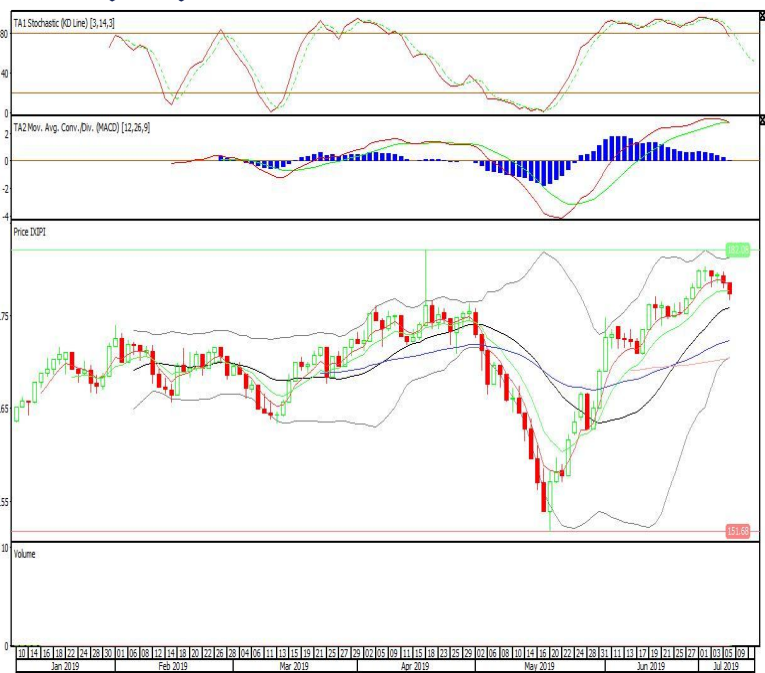


Premier ETF PEFINDO i-Grade

Rekomendasi: SELL

---Candle ditutup dibawah EMA5,10 dengan membentuk pola black opening marubozu yang merupakan sinyal bearish continuation, stochastic netral, MACD histogram convergence positif. Target pelemahan harga pada level 176 kemudian 174 dengan resist di level 178 dan 179.

XIPI (177)

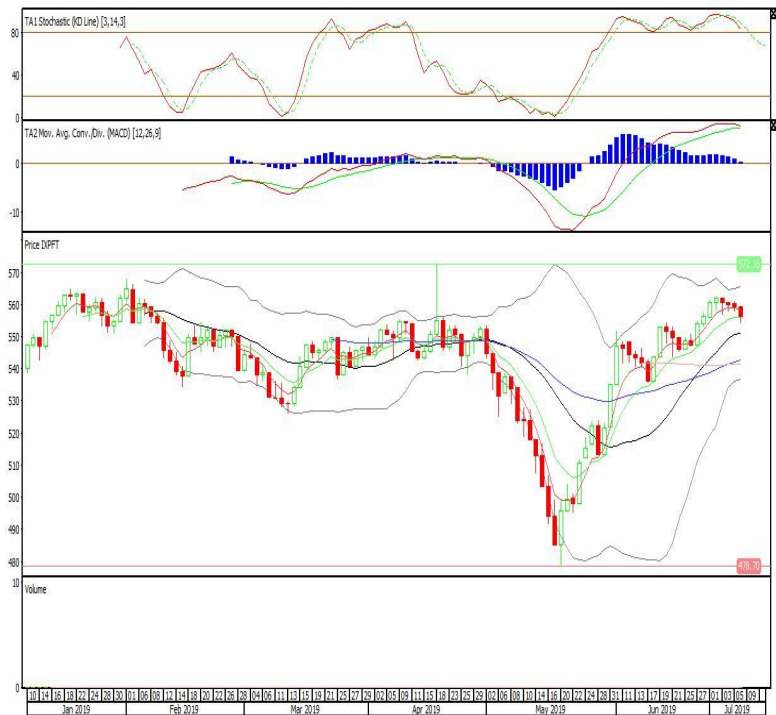


Pinnacle FTSE Indonesia ETF

Rekomendasi: SELL

---Candle ditutup dibawah EMA5 dengan membentuk pola black opening marubozu yang merupakan sinyal bearish continuation, stochastic konsisten di area overbought, MACD histogram convergence positif. Target pelemahan harga pada level 553 kemudian 550 dengan resist di level 559 dan 562.

XPFT (556)



Head Office**PT INDO PREMIER SEKURITAS**

Wisma GKBI 7/F Suite 718

Jl. Jend. Sudirman No.28

Jakarta 10210 - Indonesia

p +62.21.5793.1168

f +62.21.5793.1167

ANALYSTS CERTIFICATION.

The views expressed in this research report accurately reflect the analyst's personal views about any and all of the subject securities or issuers; and no part of the research analyst's compensation was, is, or will be, directly or indirectly, related to the specific recommendations or views expressed in the report.

DISCLAIMERS

This research is based on information obtained from sources believed to be reliable, but we do not make any representation or warranty nor accept any responsibility or liability as to its accuracy, completeness or correctness. Opinions expressed are subject to change without notice. This document is prepared for general circulation. Any recommendations contained in this document does not have regard to the specific investment objectives, financial situation and the particular needs of any specific addressee. This document is not and should not be construed as an offer or a solicitation of an offer to purchase or subscribe or sell any securities. PT. Indo Premier Sekuritas or its affiliates may seek or will seek investment banking or other business relationships with the companies in this report.