

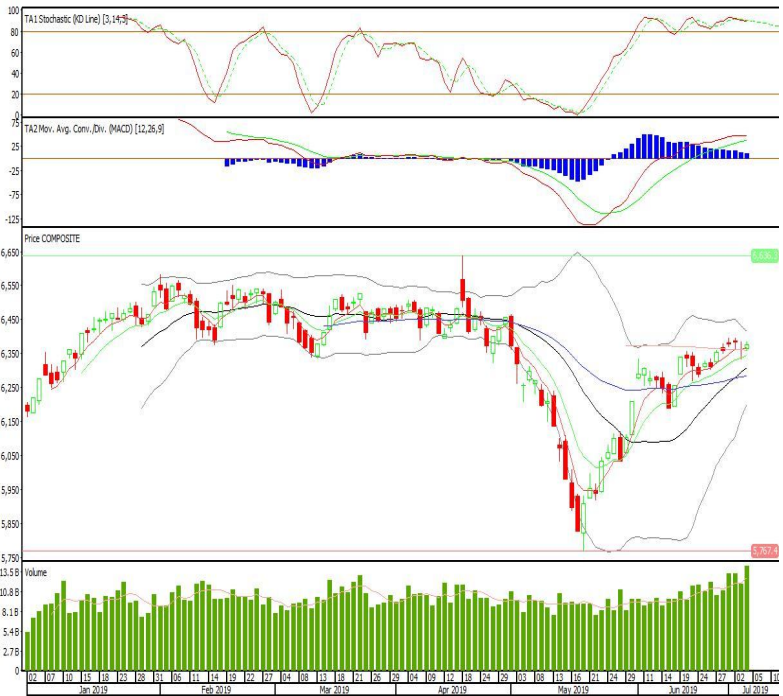
Technical Corner

IHSG

Range: 6.345-6.405

---Indeks ditutup di atas EMA5,10 dan membentuk pola small bullish candle, stochastic konsisten bergerak di area overbought dan MACD histogram convergence positif. Target kenaikan indeks pada level 6.405 kemudian 6.435 dengan support di level 6.345 dan 6.310.

IHSG (6.376)



Summarecon Agung

Rekomendasi: Buy

---Candle ditutup di atas EMA5,10 dan membentuk pola long white marubozu yang merupakan sinyal bullish continuation, stochastic netral dan MACD histogram convergence negatif. Target kenaikan harga pada level 1.230 kemudian 1.265 dengan support di level 1.160, cut loss jika break 1.125.

SMRA (1.195)



**Pakuwon Jati**

**Rekomendasi: Buy**

---Candle di tutup di atas EMA5,10 dan membentuk pola long white marubozu yang merupakan sinyal bullish continuation, stochastic netral dan MACD histogram convergence negatif. Target kenaikan harga pada level 760 kemudian 780 dengan support di level 720, cut loss jika break 700.

**PWON (740)**



**Indosat**

**Rekomendasi: Buy**

---Candle ditutup diatas EMA5,10 dengan membentuk pola white opening marubozu yang merupakan sinyal bullish continuation, stochastic netral, MACD histogram convergence positif. Target kenaikan harga pada level 2.740 kemudian 2.820 dengan support di level 2.580, cut loss jika break 2.500.

**ISAT (2.660)**

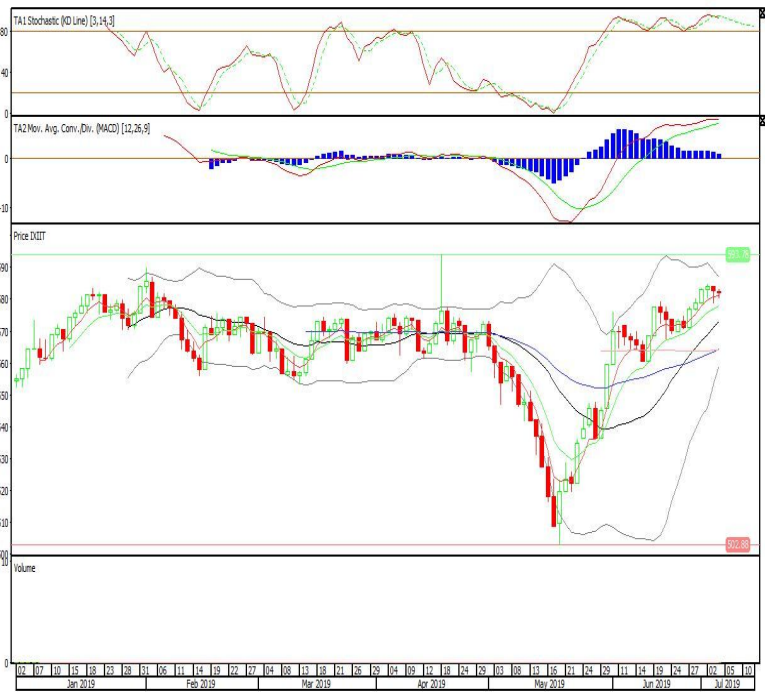


Premier ETF IDX30

**Rekomendasi: Buy**

---Candle ditutup diatas EMA5,10 dengan membentuk pola doji yang merupakan sinyal indecision, stochastic konsisten bergerak di area overbought, MACD histogram convergence positif. Target kenaikan harga pada level 584 kemudian 586 dengan *support* di level 580, *cut loss* jika *break* 578.

**XIIT (582)**

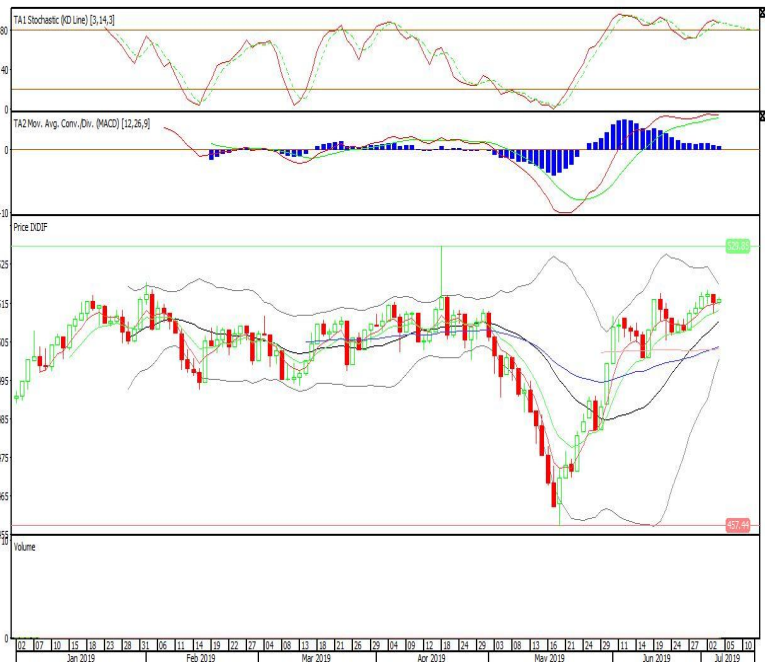


Danareksa ETF Indonesia Top 40

**Rekomendasi: Buy**

---Candle ditutup diatas EMA5,10 dengan membentuk pola small bullish candle, stochastic overbought, MACD histogram convergence positif. Target kenaikan harga pada level 517 kemudian 519 dengan *support* di level 513, *cut loss* jika *break* 511.

**XDIF (515)**

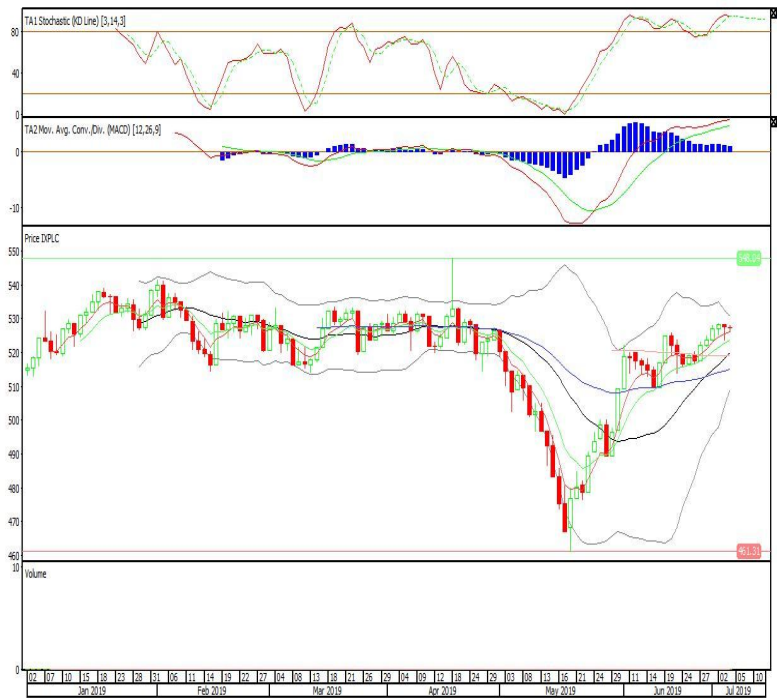


**Pinnacle Indonesia Large-Cap ETF**

**Rekomendasi: Buy**

---Candle ditutup diatas EMA5,10 dengan membentuk pola doji yang merupakan sinyal indecision, stochastic overbought, MACD histogram convergence positif. Target kenaikan harga pada level 529 kemudian 531 dengan *support* di level 525, *cut loss* jika *break* 523.

**XPLC (527)**



**Head Office****PT INDO PREMIER SEKURITAS**

Wisma GKBI 7/F Suite 718

Jl. Jend. Sudirman No.28

Jakarta 10210 - Indonesia

p +62.21.5793.1168

f +62.21.5793.1167

**ANALYSTS CERTIFICATION.**

The views expressed in this research report accurately reflect the analyst's personal views about any and all of the subject securities or issuers; and no part of the research analyst's compensation was, is, or will be, directly or indirectly, related to the specific recommendations or views expressed in the report.

**DISCLAIMERS**

This research is based on information obtained from sources believed to be reliable, but we do not make any representation or warranty nor accept any responsibility or liability as to its accuracy, completeness or correctness. Opinions expressed are subject to change without notice. This document is prepared for general circulation. Any recommendations contained in this document does not have regard to the specific investment objectives, financial situation and the particular needs of any specific addressee. This document is not and should not be construed as an offer or a solicitation of an offer to purchase or subscribe or sell any securities. PT. Indo Premier Sekuritas or its affiliates may seek or will seek investment banking or other business relationships with the companies in this report.