

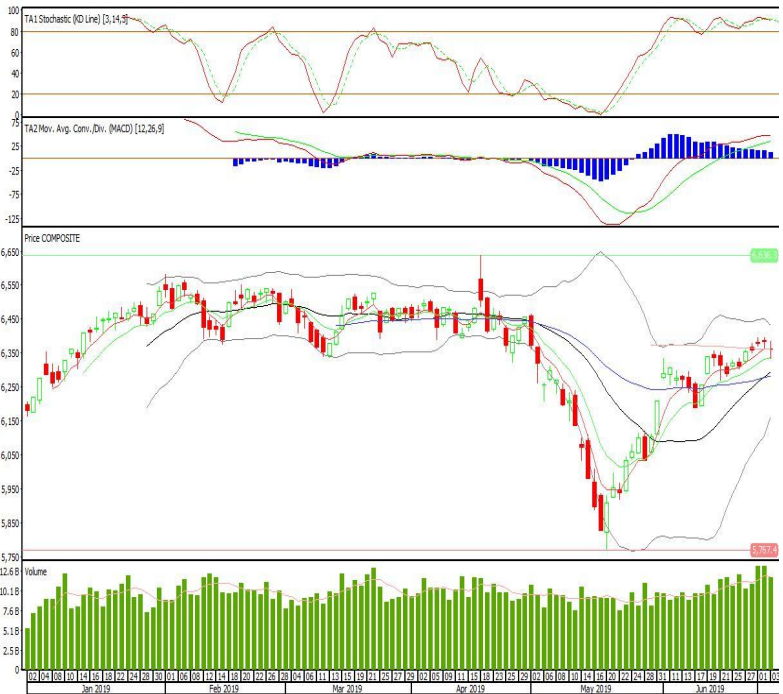
Technical Corner

IHSG

Range: 6.330-6.390

---Indeks ditutup tepat di EMA5 dengan membentuk pola doji yang merupakan sinyal indecision, stochastic overbought dan MACD histogram convergence positif. Target kenaikan indeks pada level 6.390 kemudian 6.420 dengan support di level 6.330 dan 6.300.

IHSG (6.362)



Global Mediacom

Rekomendasi: Buy

---Candle ditutup di atas MA20 dan membentuk pola long white marubozu yang merupakan sinyal bullish continuation, stochastic netral dan MACD histogram convergence negatif. Target kenaikan harga pada level 436 kemudian 458 dengan support di level 388, cut loss jika break 368.

BMTR (410)

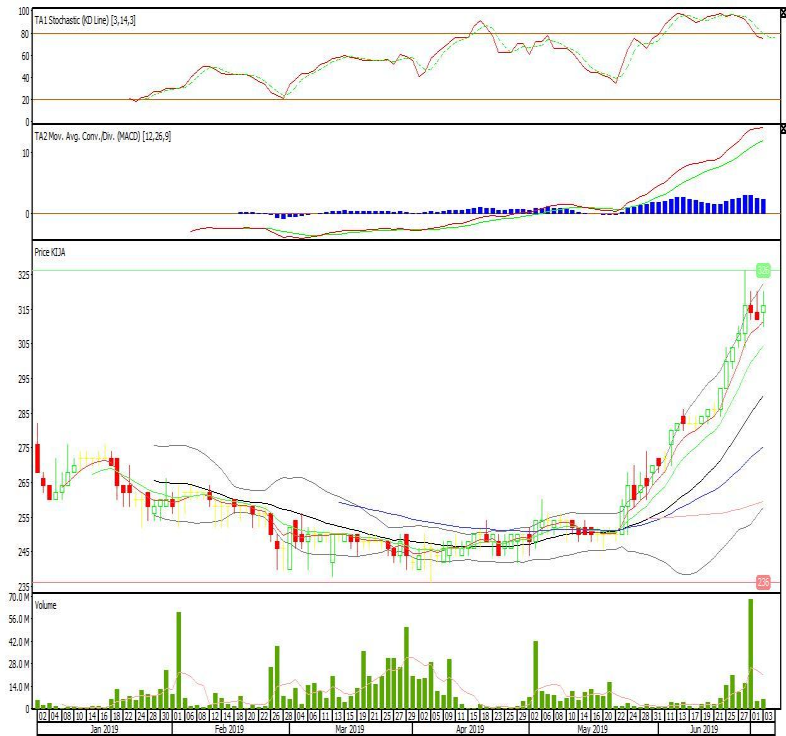


Kawasan Industri Jababeka

Rekomendasi: Buy

---Candle di tutup di atas EMA5,10 dan membentuk pola spinning top yang merupakan sinyal indecision, stochastic netral dan MACD histogram convergence positif. Target kenaikan harga pada level 320 kemudian 326 dengan support di level 310, cut loss jika break 304.

KIJA (316)



Ciputra Development

Rekomendasi: Buy on Weakness

---Candle ditutup dibawah EMA5 dengan membentuk pola long black marubozu yang merupakan sinyal bearish continuation, stochastic netral, MACD histogram convergence positif. Target harga beli pada level 1.105 dengan resist di level 1.155 dan 1.180.

CTRA (1.130)

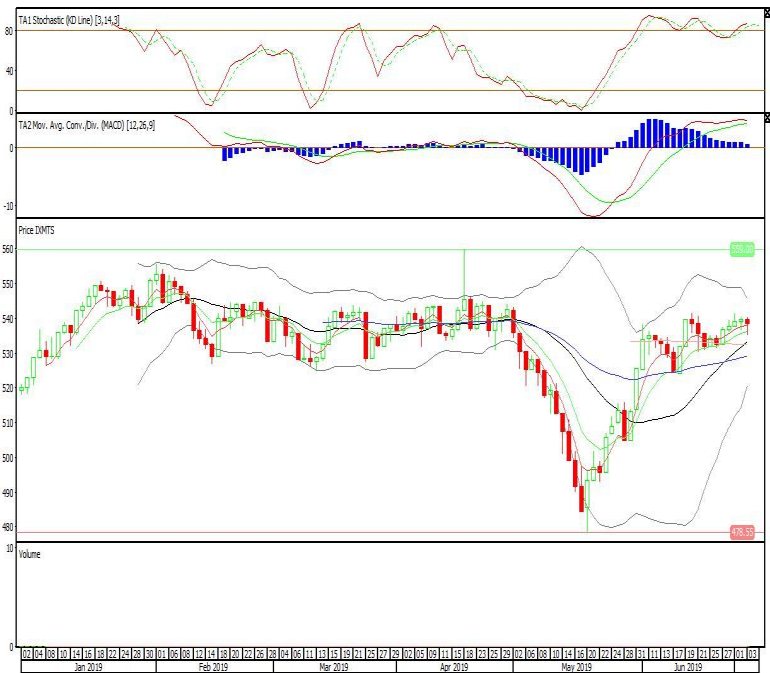


ETF MNC36 Likuid

Rekomendasi: Buy

---Candle bertahan diatas EMA5,10 dengan membentuk pola small bearish candle, stochastic overbought, MACD histogram convergence positif. Target kenaikan harga pada level 539 kemudian 541 dengan *support* di level 536, *cut loss* jika *break* 534.

XMTS (538)

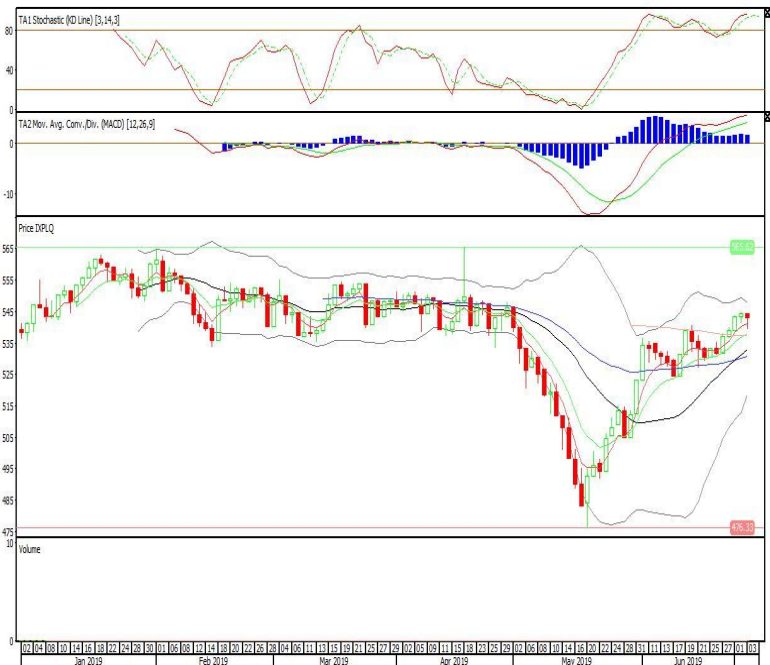


Pinnacle Enhanced Liquid ETF

Rekomendasi: Buy

---Candle bertahan diatas EMA5,10 dengan membentuk pola small bearish candle, stochastic overbought, MACD histogram convergence positif. Target kenaikan harga pada level 544 kemudian 546 dengan *support* di level 541, *cut loss* jika *break* 539.

XPLQ (543)

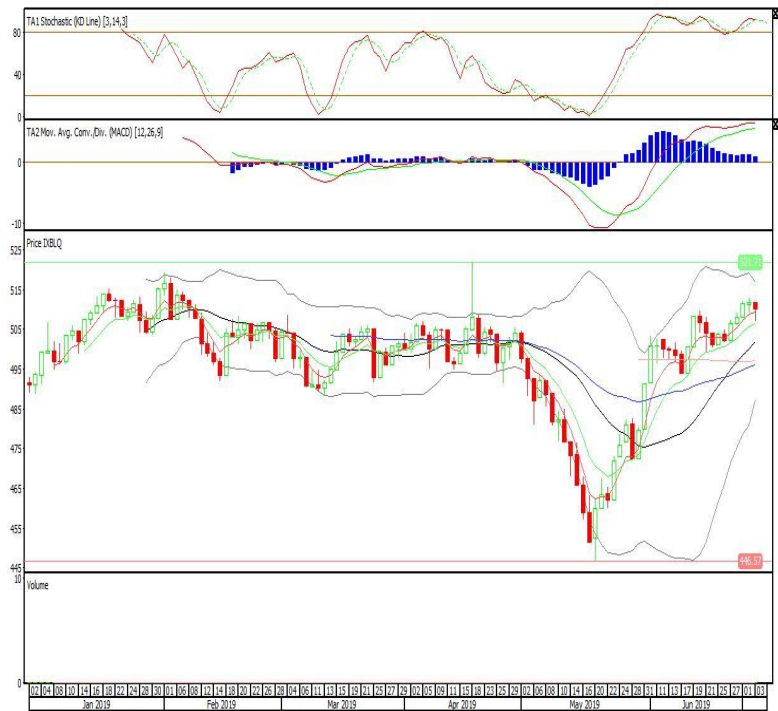


Batavia Smart Liquid ETF

Rekomendasi: Buy

---Candle bertahan diatas EMA5,10 dengan membentuk pola small bearish candle, stochastic overbought, MACD histogram convergence positif. Target kenaikan harga pada level 511 kemudian 513 dengan *support* di level 508, *cut loss* jika *break* 506.

XBLOQ (510)



Head Office**PT INDO PREMIER SEKURITAS**

Wisma GKBI 7/F Suite 718

Jl. Jend. Sudirman No.28

Jakarta 10210 - Indonesia

p +62.21.5793.1168

f +62.21.5793.1167

ANALYSTS CERTIFICATION.

The views expressed in this research report accurately reflect the analyst's personal views about any and all of the subject securities or issuers; and no part of the research analyst's compensation was, is, or will be, directly or indirectly, related to the specific recommendations or views expressed in the report.

DISCLAIMERS

This research is based on information obtained from sources believed to be reliable, but we do not make any representation or warranty nor accept any responsibility or liability as to its accuracy, completeness or correctness. Opinions expressed are subject to change without notice. This document is prepared for general circulation. Any recommendations contained in this document does not have regard to the specific investment objectives, financial situation and the particular needs of any specific addressee. This document is not and should not be construed as an offer or a solicitation of an offer to purchase or subscribe or sell any securities. PT. Indo Premier Sekuritas or its affiliates may seek or will seek investment banking or other business relationships with the companies in this report.