

Technical Corner

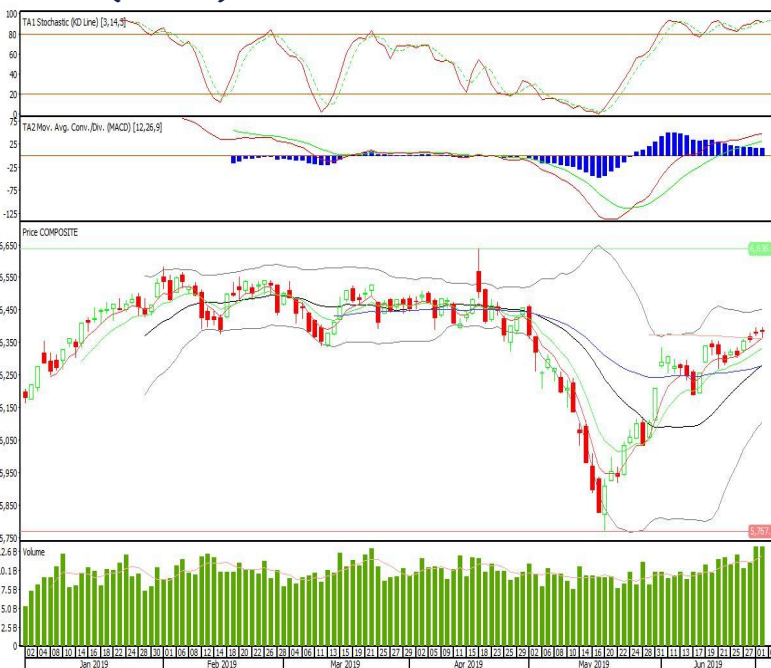
Technical | Indonesia | Daily Research

IHSG

Range: 6.350-6.420

---Indeks bertahan di atas EMA5,10 dan membentuk pola doji yang merupakan sinyal indecision, stochastic konsisten bergerak pada area overbought dan MACD histogram convergence positif. Target kenaikan indeks pada level 6.420 kemudian 6.450 dengan *support* di level 6.350 dan 6.320.

IHSG (6.384)



Indofood CBP Sukses Makmur

Rekomendasi: Buy

---Candle ditutup di atas EMA5,10 dan pola long white marubozu yang merupakan sinyal bullish continuation, stochastic netral dan MACD histogram convergence positif. Target kenaikan harga pada level 10.275 kemudian 10.425 dengan *support* di level 10.000, *cut loss* jika *break* 9.850.

ICBP (10.125)



Bekasi Fajar Industrial

Rekomendasi: Buy

---Candle di tutup di atas EMA5,10 dan membentuk pola white closing marubozu yang merupakan sinyal bullish continuation, stochastic konsisten pada area overbought dan MACD histogram convergence positif. Target kenaikan harga pada level 312 kemudian 318 dengan *support* di level 300, *cut loss* jika *break* 294.

BEST (306)



AKR Corporindo

Rekomendasi: Buy

---Candle ditutup diatas EMA5,0 dengan membentuk pola long white marubozu yang merupakan sinyal bullish continuation, stochastic golden cross, MACD histogram divergence positif. Target kenaikan harga pada level 4.280 kemudian 4.370 dengan *support* di level 4.100, *cut loss* jika *break* 4.010.

AKRA (4.190)

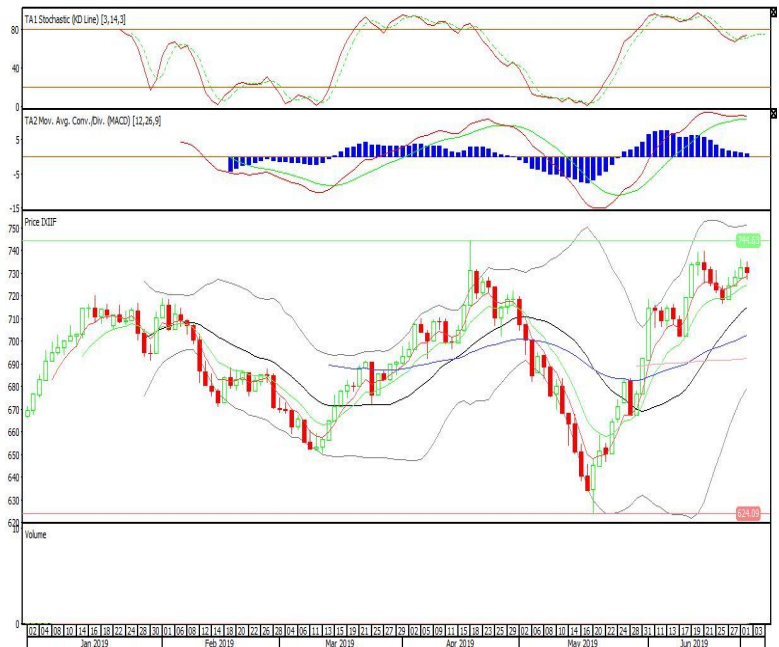


Premier ETF Indonesia Financial

Rekomendasi: Buy

---Candle bertahan diatas EMA5,10 dengan membentuk pola small bearish candle, stochastic netral, MACD histogram convergence positif. Target kenaikan harga pada level 735 kemudian 738 dengan *support* di level 726, *cut loss* jika *break* 723.

XIIF (730)

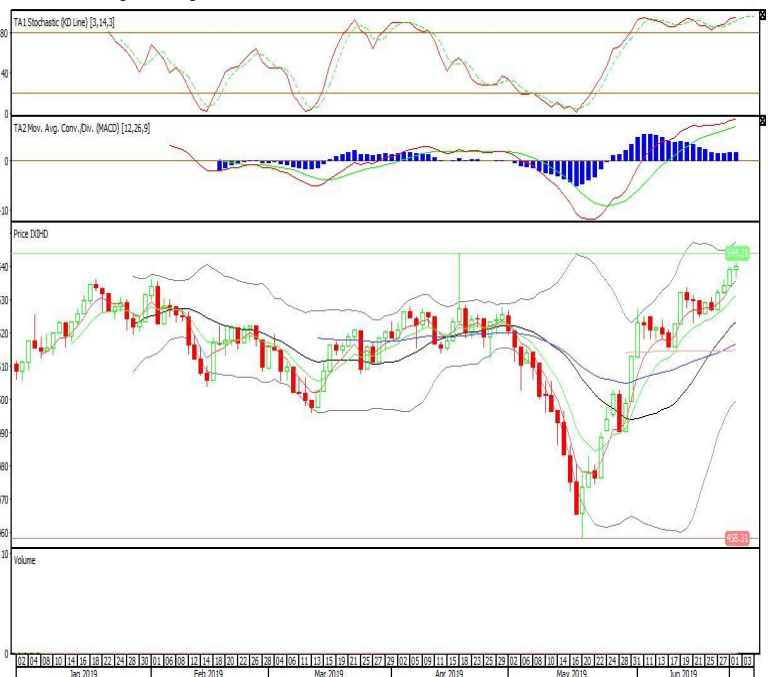


Premier ETF IDX High Dividend 20

Rekomendasi: Buy

---Candle ditutup diatas EMA5,10 dengan membentuk pola spinning top yang merupakan sinyal indecision, stochastic konsisten di area overbought, MACD histogram divergence positif. Target kenaikan harga pada level 542 kemudian 544 dengan *support* di level 536, *cut loss* jika *break* 534.

XIHD (540)

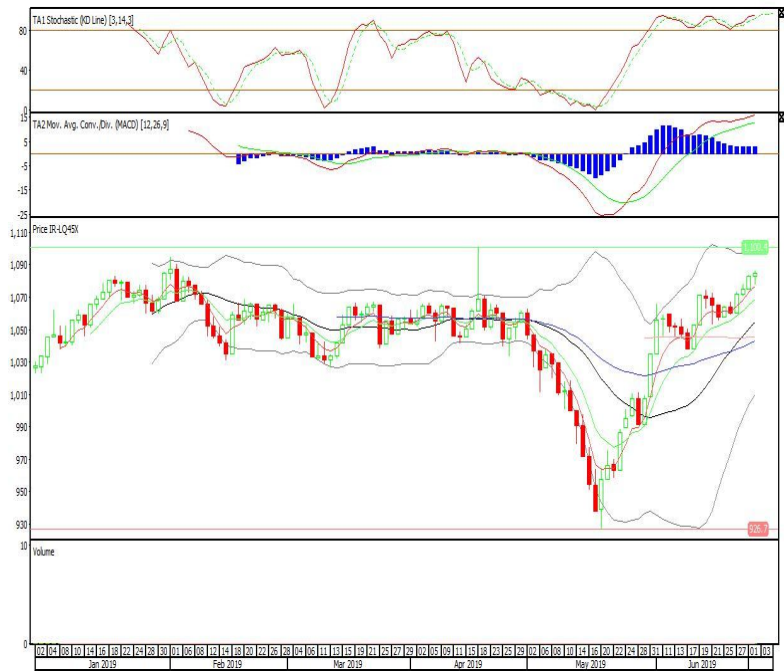


Premier ETF LQ-45

Rekomendasi: Buy

---Candle ditutup di atas EMA5,10 dan membentuk pola spinning top yang merupakan sinyal indecision, stochastic konsisten pada area overbought, MACD histogram divergence positif. Target kenaikan harga pada level 1.090 kemudian 1.096 dengan *support* di level 1.078, *cut loss* jika *break* 1.071.

R-LQ45X (1.084)



Head Office**PT INDO PREMIER SEKURITAS**

Wisma GKBI 7/F Suite 718

Jl. Jend. Sudirman No.28

Jakarta 10210 - Indonesia

p +62.21.5793.1168

f +62.21.5793.1167

ANALYSTS CERTIFICATION.

The views expressed in this research report accurately reflect the analyst's personal views about any and all of the subject securities or issuers; and no part of the research analyst's compensation was, is, or will be, directly or indirectly, related to the specific recommendations or views expressed in the report.

DISCLAIMERS

This research is based on information obtained from sources believed to be reliable, but we do not make any representation or warranty nor accept any responsibility or liability as to its accuracy, completeness or correctness. Opinions expressed are subject to change without notice. This document is prepared for general circulation. Any recommendations contained in this document does not have regard to the specific investment objectives, financial situation and the particular needs of any specific addressee. This document is not and should not be construed as an offer or a solicitation of an offer to purchase or subscribe or sell any securities. PT. Indo Premier Sekuritas or its affiliates may seek or will seek investment banking or other business relationships with the companies in this report.