

Technical Corner

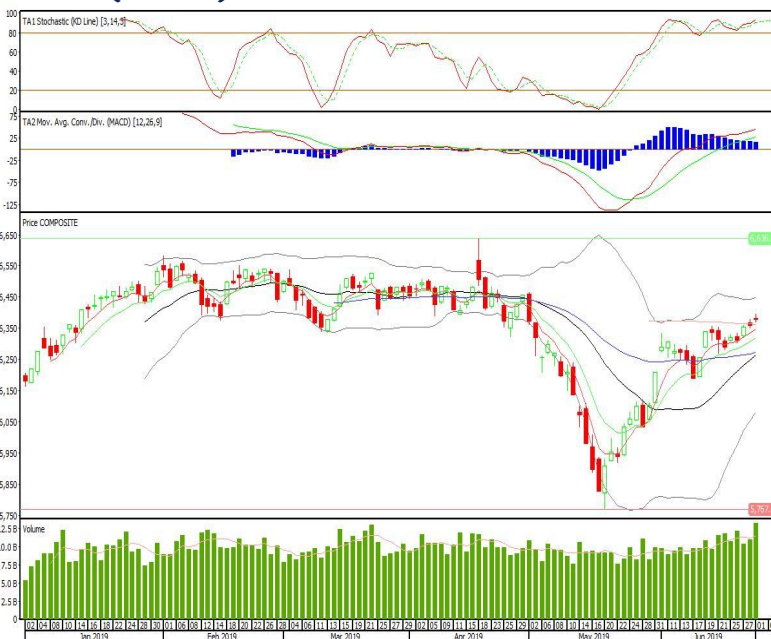
Technical | Indonesia | Daily Research

IHSG

Range: 6.345-6.410

---Indeks bertahan di atas EMA5,10 dan membentuk pola doji yang merupakan sinyal indecision, stochastic konsisten bergerak pada area overbought dan MACD histogram convergence positif. Target kenaikan indeks pada level 6.410 kemudian 6.440 dengan *support* di level 6.345 dan 6.315.

IHSG (6.379)



Surya Semesta Internusa

Rekomendasi: Buy

---Candle ditutup di atas EMA5,10 dan pola white opening marubozu yang merupakan sinyal bullish continuation, stochastic netral dan MACD bullish cross over. Target kenaikan harga pada level 750 kemudian 770 dengan *support* di level 720, *cut loss* jika *break* 705.

SSIA (735)



Lippo Karawaci

Rekomendasi: Buy

---Candle di tutup di atas EMA5,10 dan membentuk pola long white marubozu yang merupakan sinyal bullish continuation, stochastic netrak dan MACD histogram convergence positif. Target kenaikan harga pada level 280 kemudian 290 dengan support di level 264, cut loss jika break 256.

LPKR (272)



Bank Tabungan Negara

Rekomendasi: Buy

---Candle ditutup diatas EMA50 dengan membentuk pola white opening marubozu yang merupakan sinyal bullish continuation, stochastic oversold, MACD histogram divergence negatif. Target kenaikan harga pada level 2.550 kemudian 2.580 dengan support di level 2.490, cut loss jika break 2.460.

BBTN (2.520)

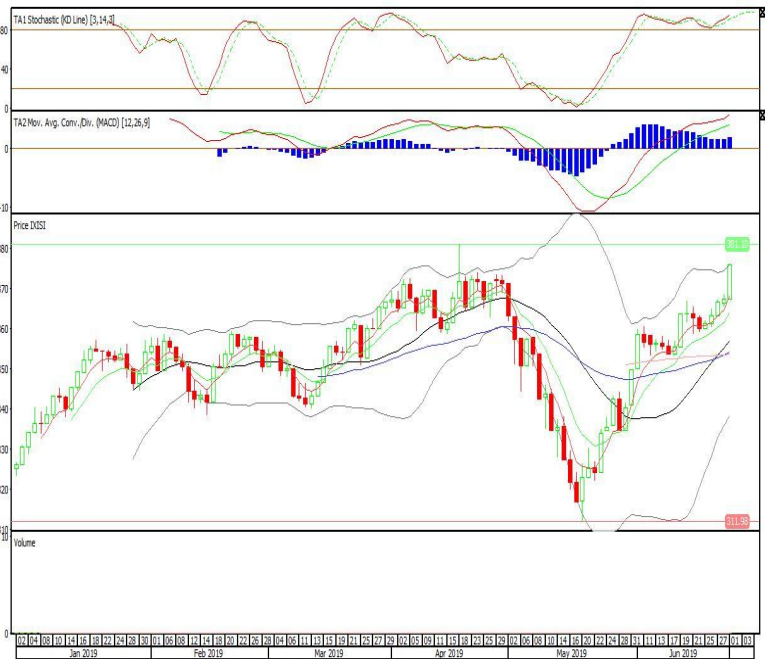


Premier ETF SMinfra18

Rekomendasi: Buy

---Candle ditutup di atas EMA5,10 dan membentuk pola white opening marubozu yang merupakan sinyal bullish continuation, stochastic konsisten pada area overbought, MACD histogram divergence positif. Target kenaikan harga pada level 384 kemudian 392 dengan *support* di level 367, *cut loss* jika *break* 358.

XISI (375)

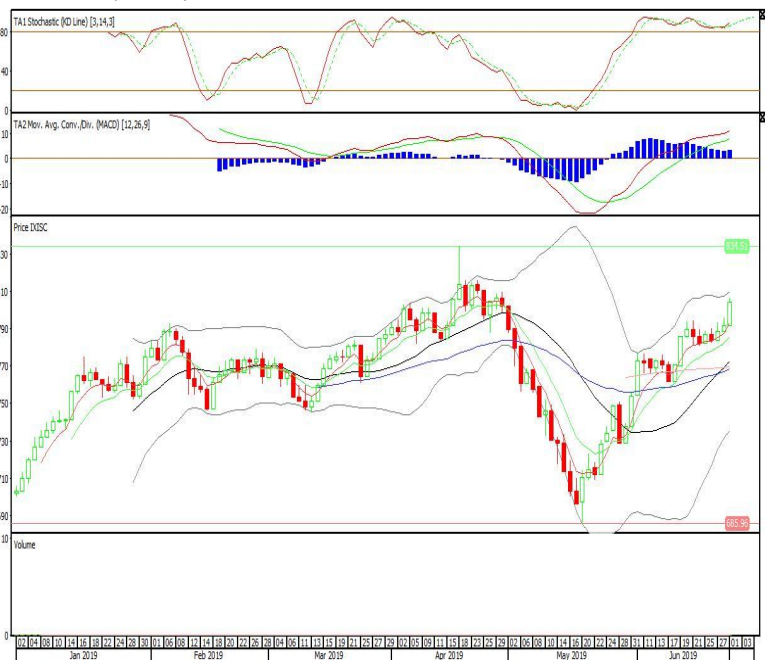


Premier ETF Indonesia Stated-Owned Companies

Rekomendasi: Buy

---Candle ditutup di atas EMA5,10 dan membentuk pola white opening marubozu yang merupakan sinyal bullish continuation, stochastic konsisten pada area overbought, MACD histogram divergence positif. Target kenaikan harga pada level 817 kemudian 830 dengan *support* di level 791, *cut loss* jika *break* 778.

XISC (804)

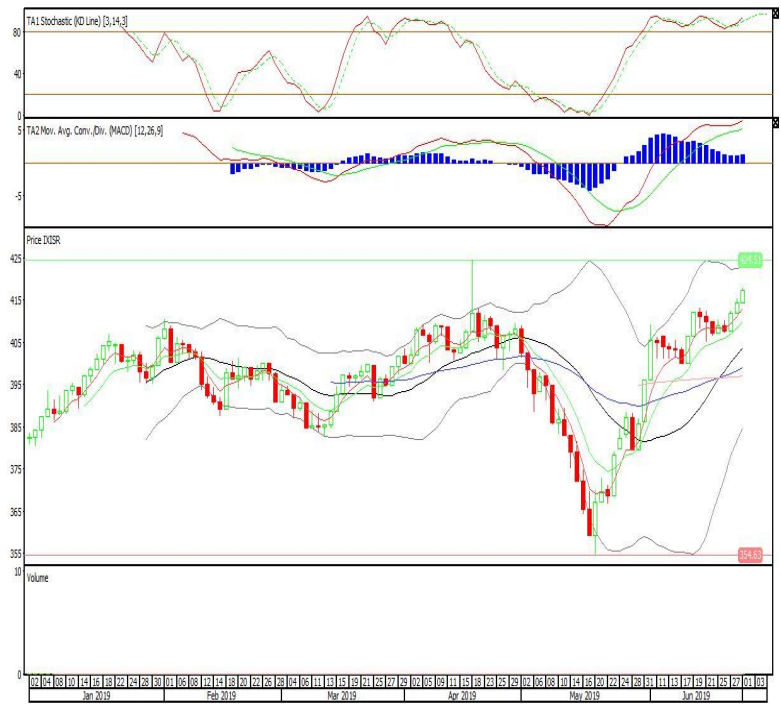


Premier ETF SRI -KEHATI

Rekomendasi: Buy

---Candle ditutup di atas EMA5,10 dan membentuk pola white opening marubozu yang merupakan sinyal bullish continuation, stochastic konsisten pada area overbought, MACD histogram divergence positif. Target kenaikan harga pada level 420 kemudian 423 dengan *support* di level 414, *cut loss* jika *break* 411.

XISR (417)



Head Office**PT INDO PREMIER SEKURITAS**

Wisma GKBI 7/F Suite 718

Jl. Jend. Sudirman No.28

Jakarta 10210 - Indonesia

p +62.21.5793.1168

f +62.21.5793.1167

ANALYSTS CERTIFICATION.

The views expressed in this research report accurately reflect the analyst's personal views about any and all of the subject securities or issuers; and no part of the research analyst's compensation was, is, or will be, directly or indirectly, related to the specific recommendations or views expressed in the report.

DISCLAIMERS

This research is based on information obtained from sources believed to be reliable, but we do not make any representation or warranty nor accept any responsibility or liability as to its accuracy, completeness or correctness. Opinions expressed are subject to change without notice. This document is prepared for general circulation. Any recommendations contained in this document does not have regard to the specific investment objectives, financial situation and the particular needs of any specific addressee. This document is not and should not be construed as an offer or a solicitation of an offer to purchase or subscribe or sell any securities. PT. Indo Premier Sekuritas or its affiliates may seek or will seek investment banking or other business relationships with the companies in this report.