

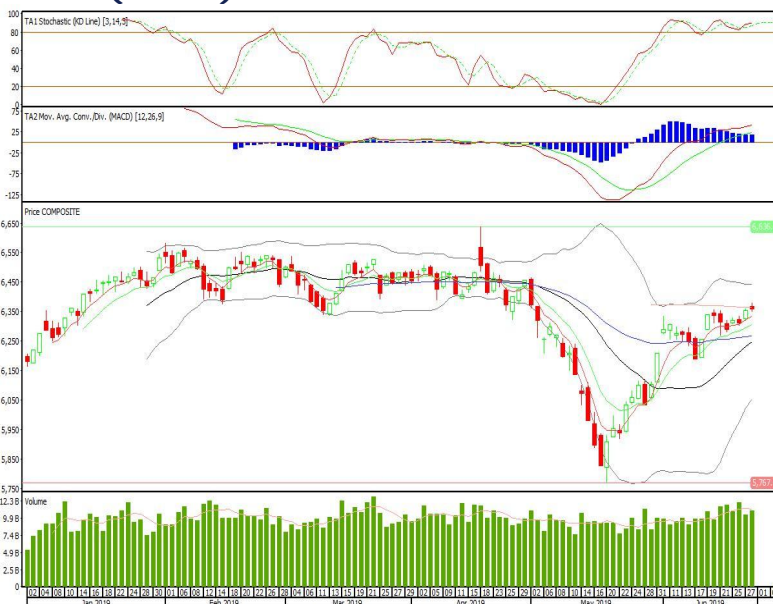
## Technical Corner

### IHSG

**Range: 6.325-6.390**

---Indeks bertahan di atas EMA5,10 dan membentuk pola small bearish candle, stochastic konsisten pada area overbought dan MACD histogram convergence positif. Target kenaikan indeks pada level 6.390 kemudian 6.420 dengan *support* di level 6.325 dan 6.290.

### IHSG (6.358)



### Bank Negara Indonesia

**Rekomendasi: Buy**

---Candle ditutup di atas EMA5,10 dan membentuk pola long white marubozu yang merupakan sinyal bullish continuation, stochastic golden cross dan MACD histogram divergence positif. Target kenaikan harga pada level 9.425 kemudian 9.625 dengan *support* di level 9.000, *cut loss* jika *break* 8.800.

### BBNI (9.200)



**Astra International**

**Rekomendasi: Buy**

---Candle di tutup di atas EMA5,10 dan membentuk pola long white marubozu yang merupakan sinyal bullish continuation, stochastic golden cross dan MACD histogram convergence negatif. Target kenaikan harga pada level 7.500 kemudian 7.550 dengan support di level 7.350, cut loss jika break 7.300.

**ASII (7.450)**



**Kalbe Farma**

**Rekomendasi: Buy**

---Candle ditutup diatas EMA10 dan membentuk pola spinning top yang merupakan sinyal indecision, stochastic netral dan MACD histogram convergence positif. Target kenaikan harga pada level 1.475 kemudian 1.490 dengan support di level 1.445, cut loss jika break 1.430.

**KLBF (1.460)**

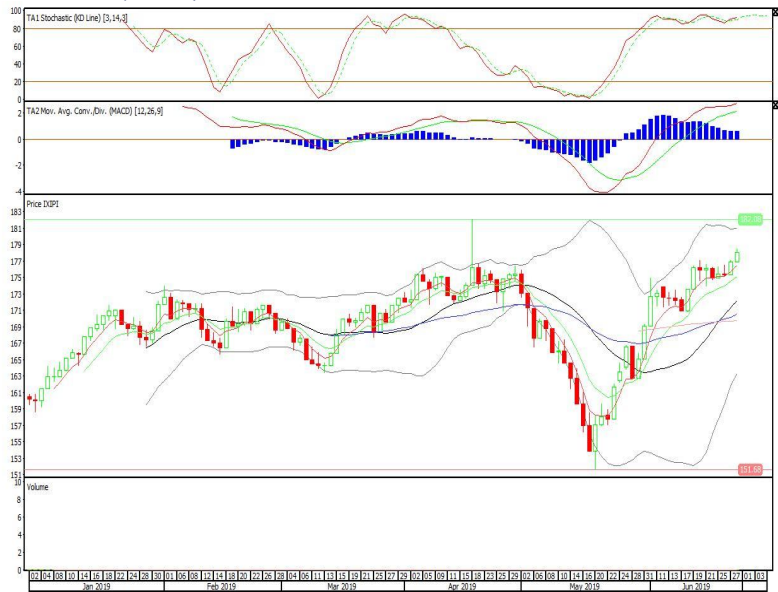


**Premier ETF Pefindo I-Grade**

**Rekomendasi: Buy**

---Candle ditutup di atas EMA5,10 dan membentuk pola white opening marubozu yang merupakan sinyal bullish continuation, stochastic konsisten pada area overbought dan MACD histogram convergence positif. Target kenaikan harga pada level 179 kemudian 180 dengan *support* di level 177, *cut loss* jika *break* 176.

**XIPI (178)**

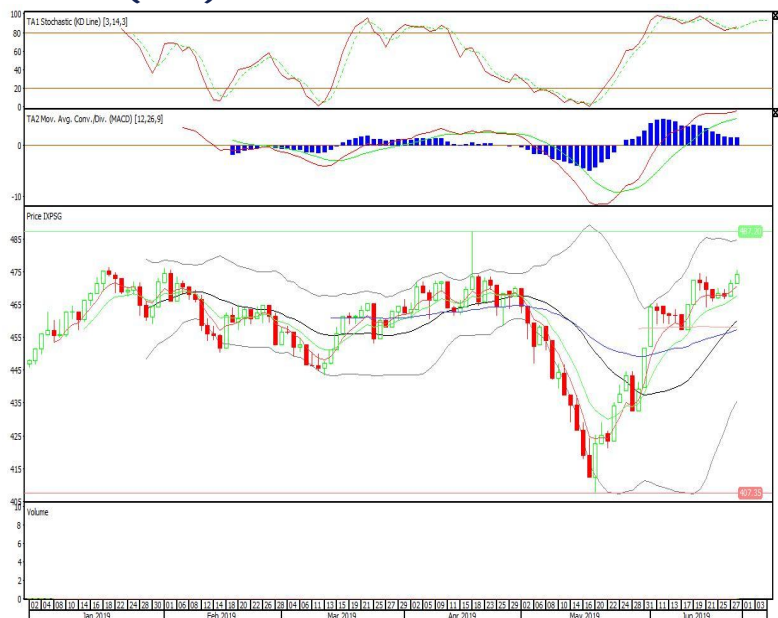


**Pinnacle Indonesia ESG ETF**

**Rekomendasi: Buy**

---Candle ditutup di atas EMA5,10 dan membentuk pola white opening marubozu yang merupakan sinyal bullish continuation, konsisten pada area overbought dan MACD histogram convergence positif. Target kenaikan harga pada level 477 kemudian 480 dengan *support* di level 471, *cut loss* jika *break* 468.

**XPSG (474)**

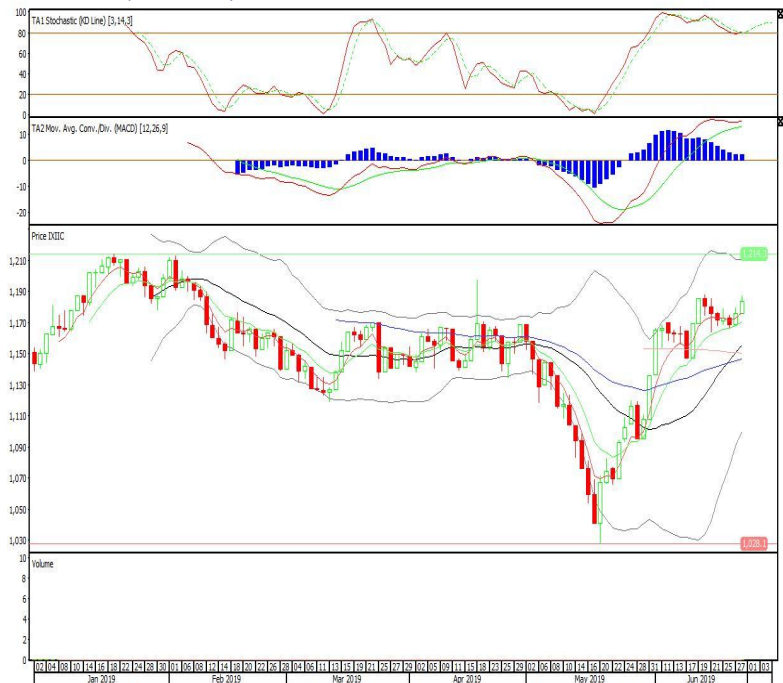


Premier ETF Indo Consumer

**Rekomendasi: BUY**

-----Candle ditutup di atas EMA5,10 dan membentuk pola white opening marubozu yang merupakan sinyal bullish continuation, stochastic golden cross dan MACD histogram convergence positif. Target kenaikan harga pada level 1.191 kemudian 1.198 dengan *support* di level 1.175, *cut loss* jika *break* 1.167.

**XIIC (1.183)**



**Head Office****PT INDO PREMIER SEKURITAS**

Wisma GKBI 7/F Suite 718

Jl. Jend. Sudirman No.28

Jakarta 10210 - Indonesia

p +62.21.5793.1168

f +62.21.5793.1167

**ANALYSTS CERTIFICATION.**

The views expressed in this research report accurately reflect the analyst's personal views about any and all of the subject securities or issuers; and no part of the research analyst's compensation was, is, or will be, directly or indirectly, related to the specific recommendations or views expressed in the report.

**DISCLAIMERS**

This research is based on information obtained from sources believed to be reliable, but we do not make any representation or warranty nor accept any responsibility or liability as to its accuracy, completeness or correctness. Opinions expressed are subject to change without notice. This document is prepared for general circulation. Any recommendations contained in this document does not have regard to the specific investment objectives, financial situation and the particular needs of any specific addressee. This document is not and should not be construed as an offer or a solicitation of an offer to purchase or subscribe or sell any securities. PT. Indo Premier Sekuritas or its affiliates may seek or will seek investment banking or other business relationships with the companies in this report.