

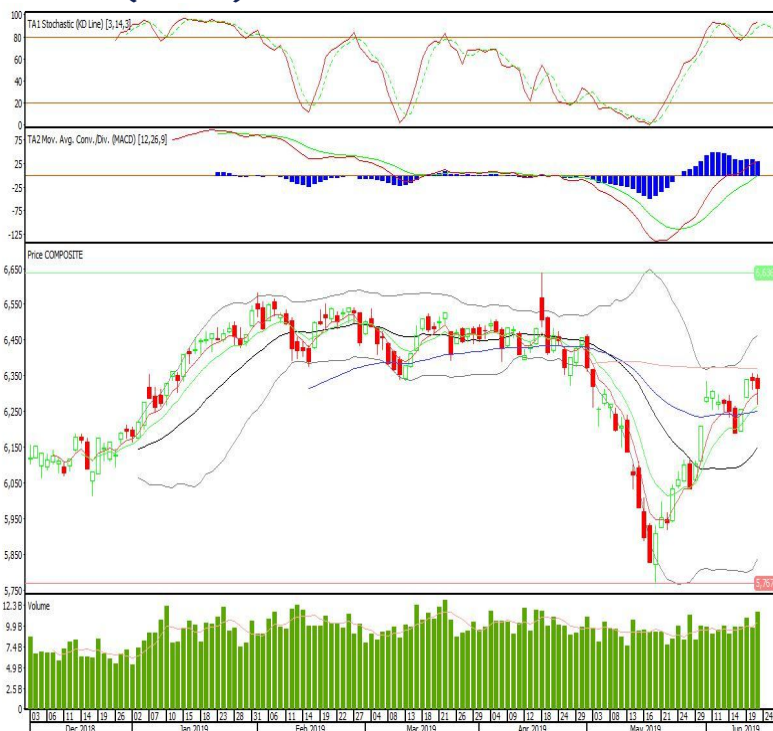
Technical Corner

IHSG

Range: 6.275-6.350

---Indeks ditutup dengan membentuk pola long black marubozu yang merupakan sinyal bearish continuation, stochastic overbought dan MACD histogram convergence positif. Target pelemahan indeks pada level 6.275 kemudian 6.230 dengan *resist* di level 6.350 dan 6.385.

IHSG (6.315)



Bank Rakyat Indonesia

Rekomendasi: Buy

---Candle ditutup di atas EMA5,10 dan membentuk pola white closing marubozu yang merupakan sinyal bullish continuation, stochastic konsisten di area overbought dan MACD histogram divergence positif. Target kenaikan harga pada level 4.430 kemudian 4.500 dengan *support* di level 4.290, *cut loss* jika *break* 4.210.

BBRI (4.360)



Kalbe Farma

Rekomendasi: Buy on Weakness

---Candle di tutup di bawah EMA5 dan membentuk pola black opening marubozu yang merupakan sinyal bearish continuation, stochastic overbought dan MACD histogram convergence positif. Target harga beli pada level 1.440 dengan resist di level 1.470 dan 1.485.

KLBF (1.455)



Indofood Sukses Makmur

Rekomendasi: Buy

---Candle ditutup diatas EMA5,10 dengan membentuk pola spinning top yang merupakan sinyal indecision, stochastic overbought, MACD histogram convergence positif. Target kenaikan harga pada level 7.125 kemudian 7.225 dengan support di level 7.025, cut loss jika break 6.975.

IINDF (7.075)

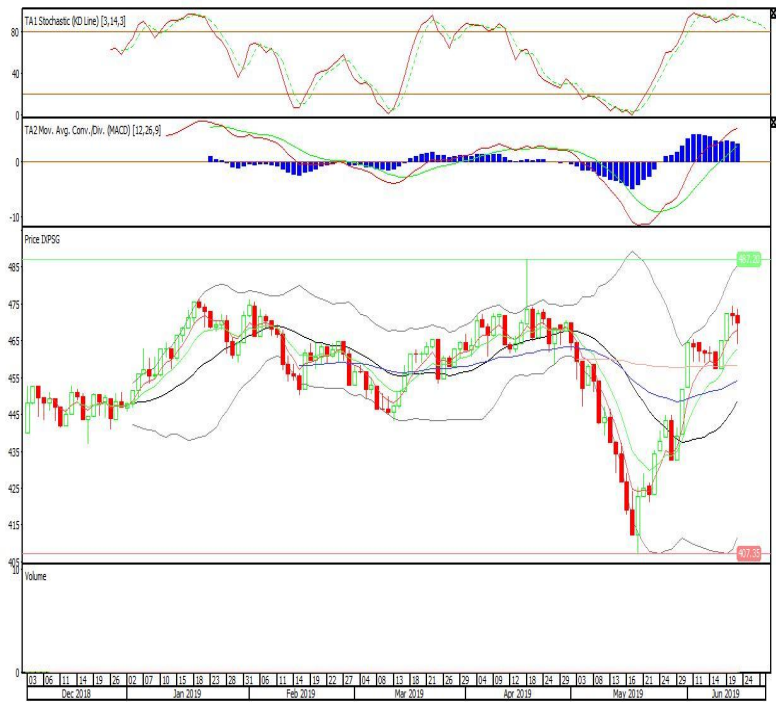


Pinnacle Indonesia ESG ETF

Rekomendasi: SELL

---Candle membentuk pola small bearish candle, stochastic overbought, MACD histogram convergence positif. Target pelemahan harga pada level 467 kemudian 465 dengan *resist* di level 471 dan 473.

XPSG (469)

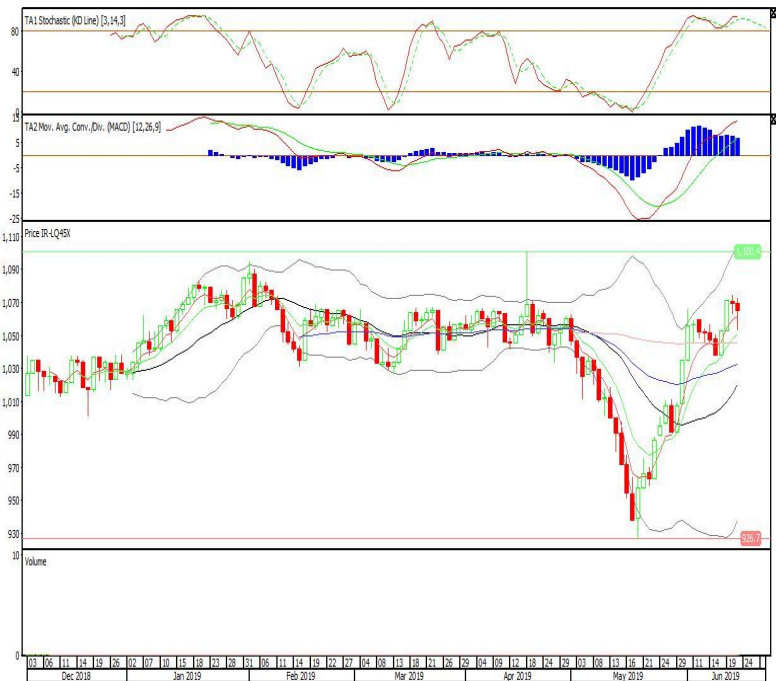


Premier ETF LQ-45

Rekomendasi: SELL

---Candle membentuk pola small bearish candle, stochastic overbought, MACD histogram convergence positif. Target pelemahan harga pada level 1.060 kemudian 1.056 dengan *resist* di level 1.069 dan 1.073.

R-LQ45X (1.065)

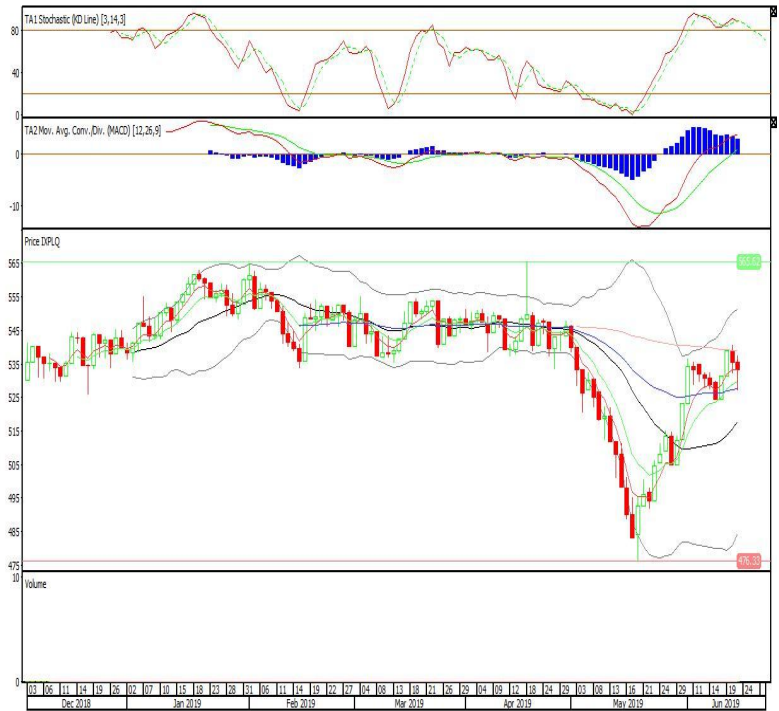


Pinnacle Enhanced Liquid ETF

Rekomendasi: SELL

---Candle membentuk pola small bearish candle, stochastic overbought, MACD histogram convergence positif. Target pelemahan harga pada level 531 kemudian 529 dengan *resist* di level 535 dan 537.

XPLQ (533)



Head Office**PT INDO PREMIER SEKURITAS**

Wisma GKBI 7/F Suite 718

Jl. Jend. Sudirman No.28

Jakarta 10210 - Indonesia

p +62.21.5793.1168

f +62.21.5793.1167

ANALYSTS CERTIFICATION.

The views expressed in this research report accurately reflect the analyst's personal views about any and all of the subject securities or issuers; and no part of the research analyst's compensation was, is, or will be, directly or indirectly, related to the specific recommendations or views expressed in the report.

DISCLAIMERS

This research is based on information obtained from sources believed to be reliable, but we do not make any representation or warranty nor accept any responsibility or liability as to its accuracy, completeness or correctness. Opinions expressed are subject to change without notice. This document is prepared for general circulation. Any recommendations contained in this document does not have regard to the specific investment objectives, financial situation and the particular needs of any specific addressee. This document is not and should not be construed as an offer or a solicitation of an offer to purchase or subscribe or sell any securities. PT. Indo Premier Sekuritas or its affiliates may seek or will seek investment banking or other business relationships with the companies in this report.