

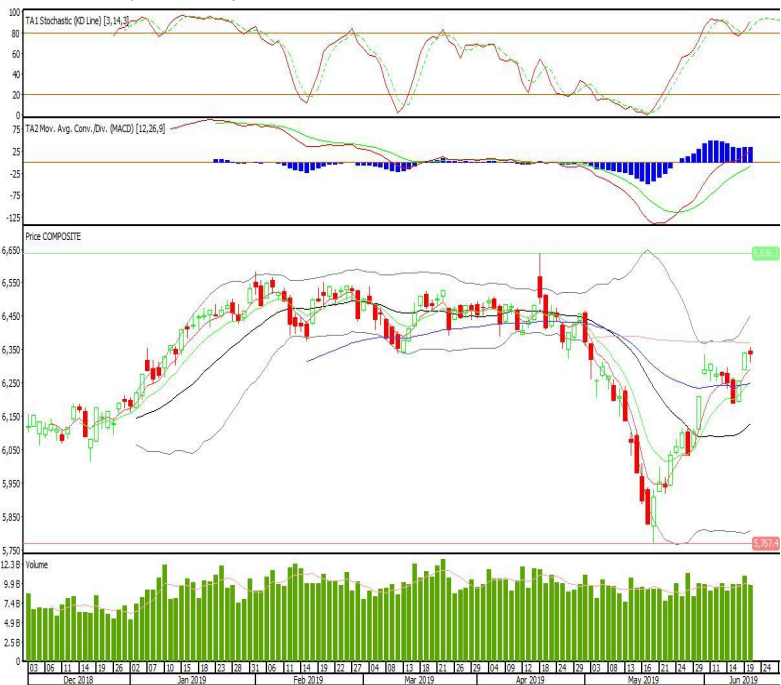
## Technical Corner

### IHSG

**Range: 6.305-6.370**

---Indeks bertahan di atas EMA5,10 dengan membentuk pola small bearish candle, stochastic overbought dan MACD histogram divergence positif. Target kenaikan indeks pada level 6.370 kemudian 6.410 dengan *support* di level 6.305 dan 6.275.

### IHSG (6.335)

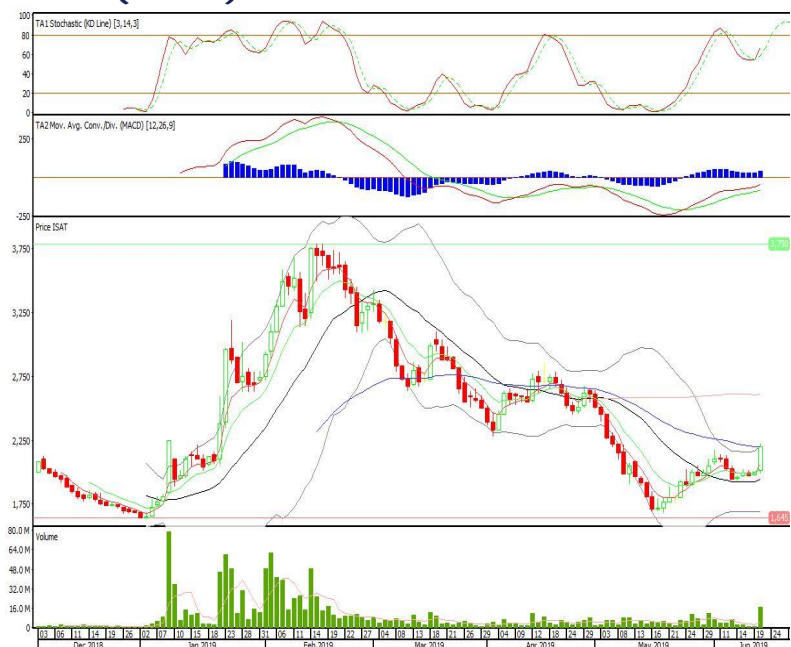


### Indosat

**Rekomendasi: Buy**

---Candle ditutup di atas EMA5,10 dan membentuk pola long white marubozu yang merupakan sinyal bullish continuation, stochastic netral dan MACD histogram divergence positif. Target kenaikan harga pada level 2.390 kemudian 2.550 dengan *support* di level 2.000, *cut loss* jika *break* 1.810.

### ISAT (2.200)



Vale Indonesia

**Rekomendasi: Buy**

---Candle di atas EMA5,10 dan membentuk pola spinning top yang merupakan sinyal indecision, stochastic netral dan MACD histogram divergence positif. Target kenaikan harga pada level 3.020 kemudian 3.090 dengan *support* di level 2.870, *cut loss* jika *break* 2.810.

**INCO (2.940)**



Elnusa

**Rekomendasi: Buy**

---Candle ditutup diatas EMA5,10 dengan membentuk pola white closing marubozu yang merupakan sinyal bullish continuation, stochastic overbought, MACD histogram divergence positif. Target kenaikan harga pada level 376 kemudian 384 dengan *support* di level 360, *cut loss* jika *break* 352.

**ELSA (368)**

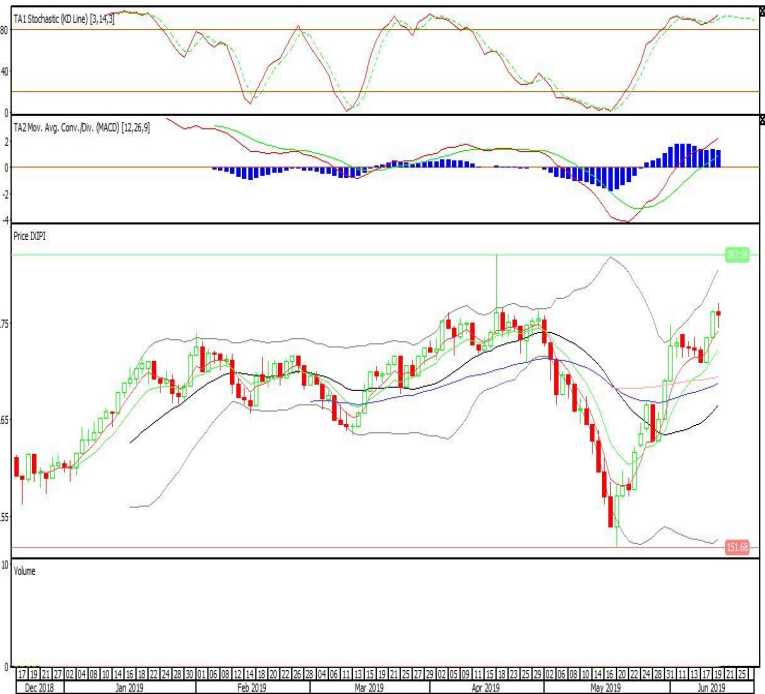


**Premier ETF PEFINDO i-Grade**

**Rekomendasi: SELL**

---Candle membentuk pola small bearish candle, stochastic overbought, MACD histogram convergence positif. Target pelemahan harga pada level 174 kemudian 172 dengan *resist* di level 176 dan 178.

**XIPI (175)**

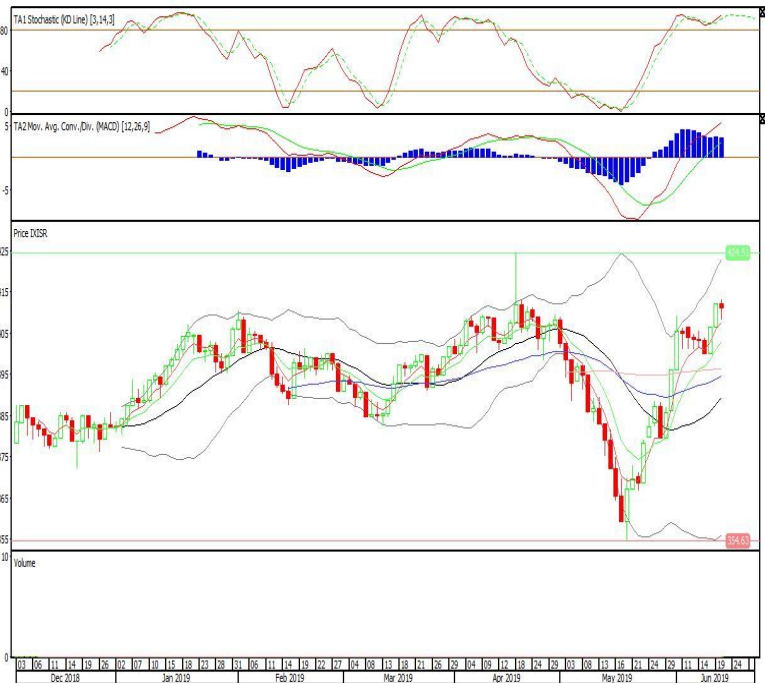


**Premier ETF SRI -KEHATI**

**Rekomendasi: SELL**

---Candle membentuk pola small bearish candle, stochastic overbought, MACD histogram convergence positif. Target pelemahan harga pada level 409 kemudian 406 dengan *resist* di level 414 dan 416.

**XISR (411)**

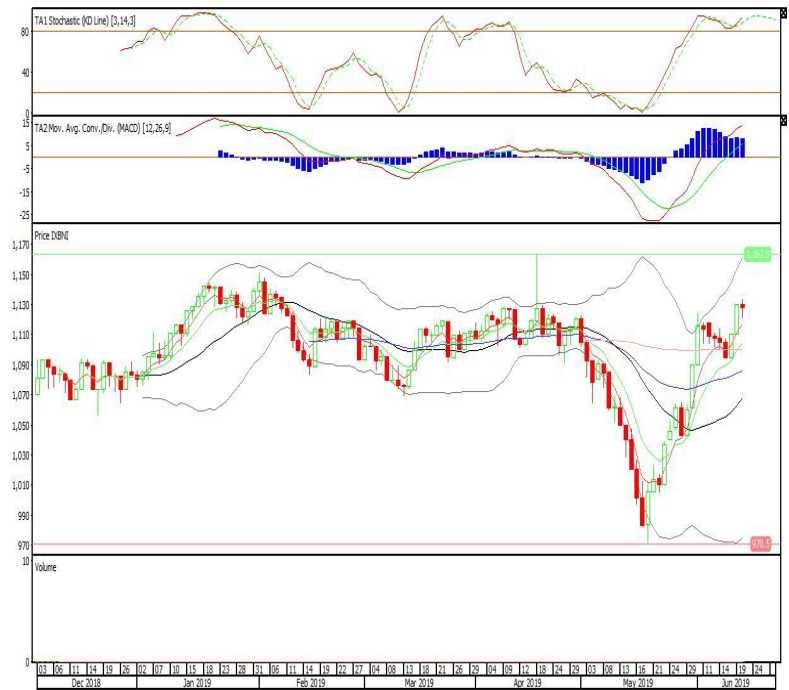


**BNI-AM Nusantara ETF MSCI Indonesia**

**Rekomendasi: SELL**

--- Candle membentuk pola small bearish candle, stochastic overbought, MACD histogram convergence positif. Target pelemahan harga pada level 1.123 kemudian 1.118 dengan *resist* di level 1.133 dan 1.138.

**XBNI (1.128)**



**Head Office****PT INDO PREMIER SEKURITAS**

Wisma GKBI 7/F Suite 718

Jl. Jend. Sudirman No.28

Jakarta 10210 - Indonesia

p +62.21.5793.1168

f +62.21.5793.1167

**ANALYSTS CERTIFICATION.**

The views expressed in this research report accurately reflect the analyst's personal views about any and all of the subject securities or issuers; and no part of the research analyst's compensation was, is, or will be, directly or indirectly, related to the specific recommendations or views expressed in the report.

**DISCLAIMERS**

This research is based on information obtained from sources believed to be reliable, but we do not make any representation or warranty nor accept any responsibility or liability as to its accuracy, completeness or correctness. Opinions expressed are subject to change without notice. This document is prepared for general circulation. Any recommendations contained in this document does not have regard to the specific investment objectives, financial situation and the particular needs of any specific addressee. This document is not and should not be construed as an offer or a solicitation of an offer to purchase or subscribe or sell any securities. PT. Indo Premier Sekuritas or its affiliates may seek or will seek investment banking or other business relationships with the companies in this report.