

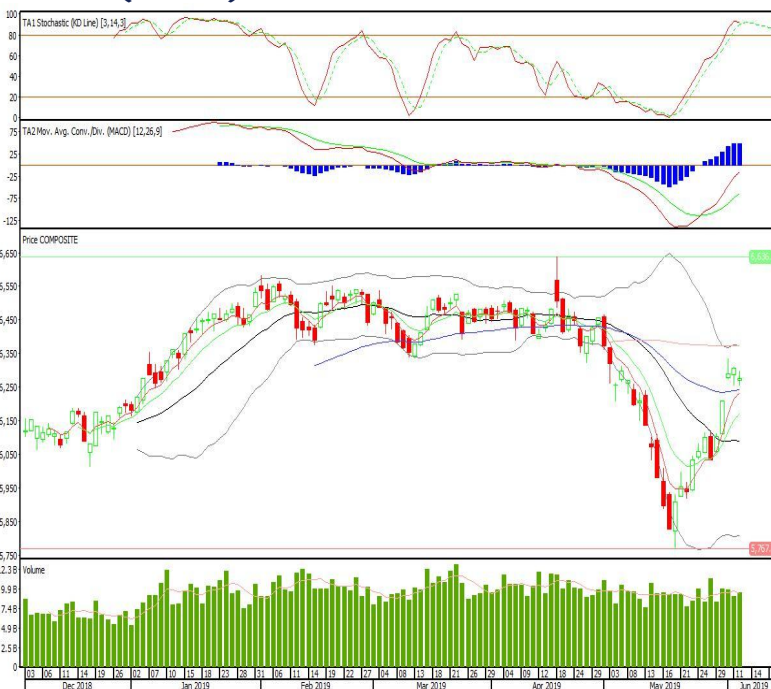
Technical Corner

IHSG

Range: 6.240-6.305

---Indeks ditutup dengan membentuk pola spinning top yang merupakan sinyal indecision, stochastic overbought dan MACD histogram convergence positif. Target koreksi indeks pada level 6.240 kemudian 6.205 dengan *resist* di level 6.305 dan 6.400.

IHSG (6.276)



Surya Citra Media

Rekomendasi: Buy

---Candle ditutup di atas EMA50 dan membentuk pola long white marubozu yang merupakan sinyal bullish continuation, stochastic overbought dan MACD histogram divergence positif. Target kenaikan harga pada level 1.730 kemudian 1.760 dengan *support* di level 1.655, *cut loss* jika *break* 1.630.

SCMA (1.690)



Jasa Marga

Rekomendasi: Buy

---Candle ditutup di atas EMA5,10 dan membentuk pola white closing marubozu yang merupakan sinyal bullish continuation, stochastic overbought dan MACD histogram divergence positif. Target kenaikan harga pada level 5.950 kemudian 6.050 dengan *support* di level 5.725, *cut loss* jika *break* 5.600.

JSMR (5.825)



Indocement Tunggal Prakarsa

Rekomendasi: Buy

---Candle ditutup diatas EMA5,10 dengan membentuk pola white closing marubozu yang merupakan sinyal bullish continuation, stochastic overbought, MACD histogram convergence positif. Target kenaikan harga pada level 20.900 kemudian 21.150 dengan *support* di level 20.400, *cut loss* jika *break* 20.150.

INTP (20.650)

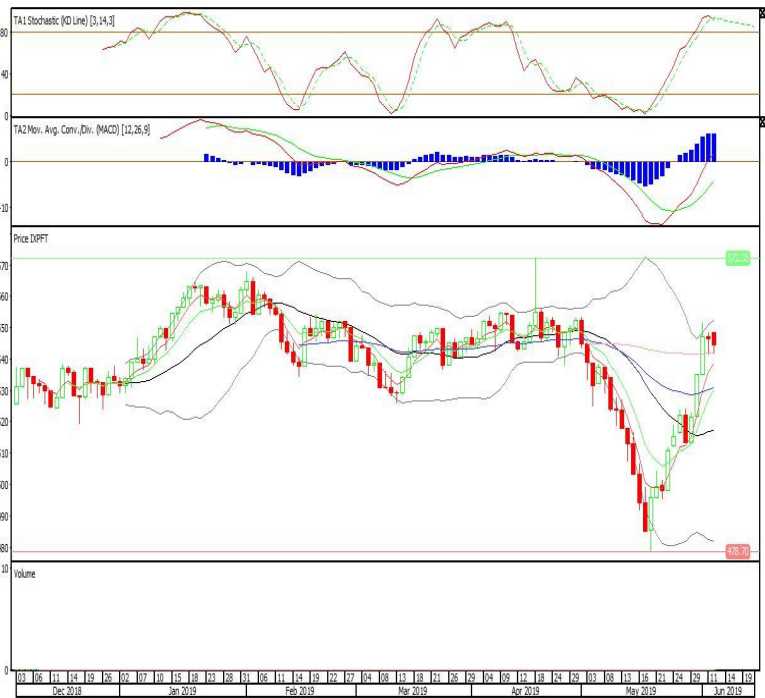


Pinnacle FTSE Indonesia ETF

Rekomendasi: SELL

---Candle ditutup dibawah upperband dengan membentuk pola black opening marubozu yang merupakan sinyal bearish continuation, stochastic overbought, MACD histogram divergence positif. Target pelemahan harga pada level 540 kemudian 536 dengan *resist* di level 548 dan 552.

XPFT (544)

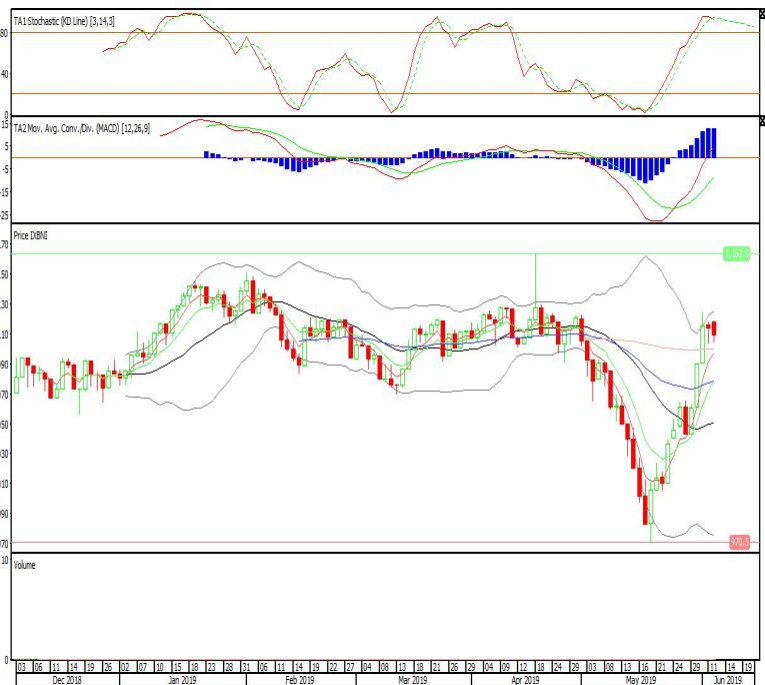


BNI-AM Nusantara ETF MSCI Indonesia

Rekomendasi: SELL

---Candle ditutup dibawah upperband dengan membentuk pola black opening marubozu yang merupakan sinyal bearish continuation, stochastic overbought, MACD histogram divergence positif. Target pelemahan harga pada level 1.100 kemudian 1.091 dengan *resist* di level 1.117 dan 1.126.

XBNI (1.109)

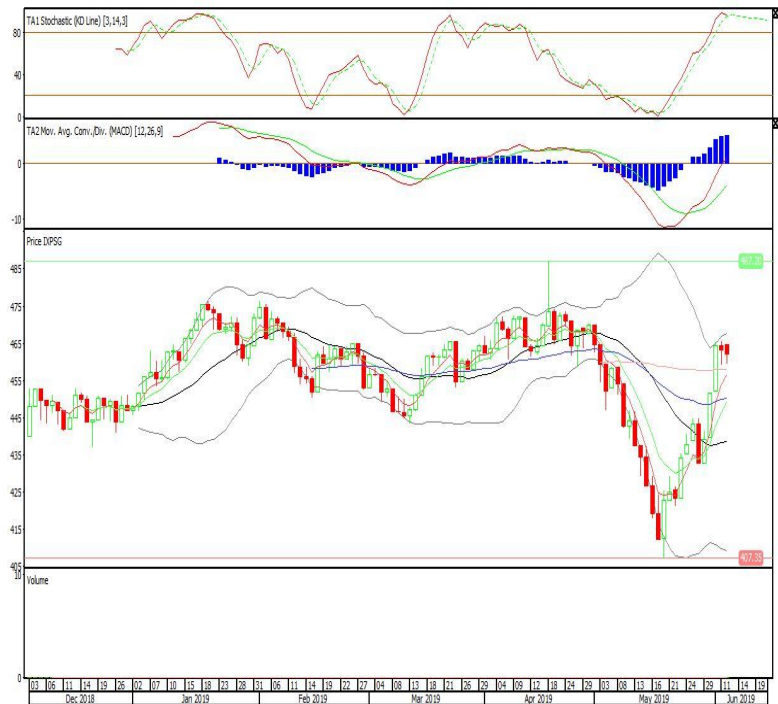


Pinnacle Indonesia ESG ETF

Rekomendasi: SELL

---Candle ditutup dibawah upperband dengan membentuk pola black opening marubozu yang merupakan sinyal bearish continuation, stochastic overbought, MACD histogram divergence positif. Target pelemahan harga pada level 459 kemudian 457 dengan resist di level 464 dan 466.

XPSG (462)



Head Office**PT INDO PREMIER SEKURITAS**

Wisma GKBI 7/F Suite 718

Jl. Jend. Sudirman No.28

Jakarta 10210 - Indonesia

p +62.21.5793.1168

f +62.21.5793.1167

ANALYSTS CERTIFICATION.

The views expressed in this research report accurately reflect the analyst's personal views about any and all of the subject securities or issuers; and no part of the research analyst's compensation was, is, or will be, directly or indirectly, related to the specific recommendations or views expressed in the report.

DISCLAIMERS

This research is based on information obtained from sources believed to be reliable, but we do not make any representation or warranty nor accept any responsibility or liability as to its accuracy, completeness or correctness. Opinions expressed are subject to change without notice. This document is prepared for general circulation. Any recommendations contained in this document does not have regard to the specific investment objectives, financial situation and the particular needs of any specific addressee. This document is not and should not be construed as an offer or a solicitation of an offer to purchase or subscribe or sell any securities. PT. Indo Premier Sekuritas or its affiliates may seek or will seek investment banking or other business relationships with the companies in this report.