

Technical Corner

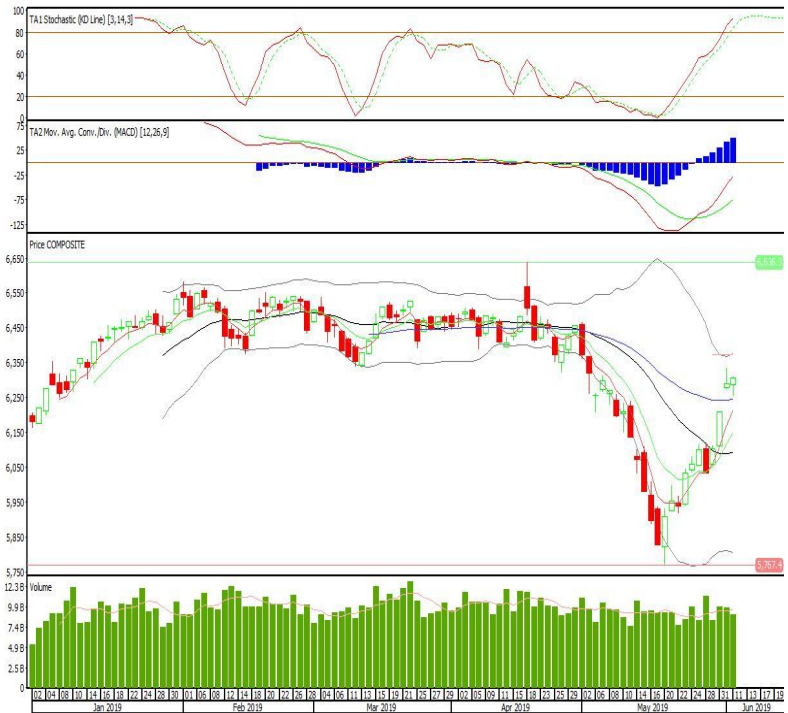
12 Juni 2019

IHSG

Range: 6.270-6.340

---Indeks bertahan di atas EMA50 dan membentuk pola small bullish candle, stochastic overbought dan MACD histogram divergence positif. Target kenaikan indeks pada level 6.340 kemudian 6.375 dengan support 6.270 dan 6.235.

IHSG (6.306)



Mitra Adiperkasa

Rekomendasi: Buy

---Candle ditutup di atas MA20 dan membentuk pola long white marubozu yang merupakan sinyal bullish continuation, stochastic netral dan MACD histogram divergence positif. Target kenaikan harga pada level 940 kemudian 965 dengan support di level 885, cut loss jika break 860.

MAPI (910)



**Bekasi Fajar Industrial Estate**

**Rekomendasi: Buy**

---Candle ditutup dengan membentuk pola long white marubozu yang merupakan sinyal bullish continuation, stochastic netral dan MACD histogram divergence positif. Target kenaikan harga pada level 288 kemudian 296 dengan support di level 268, *cut loss* jika *break* 260.

**BEST (278)**



**Erajaya Swasembada**

**Rekomendasi: Buy**

---Candle ditutup diatas EMA5,10 dengan membentuk pola long white marubozu yang merupakan sinyal bullish continuation, stochastic overbought, MACD histogram divergence positif. Target kenaikan harga pada level 1.440 kemudian 1.550 dengan *support* di level 1.220, *cut loss* jika *break* 1.110.

**ERAA (1.330)**

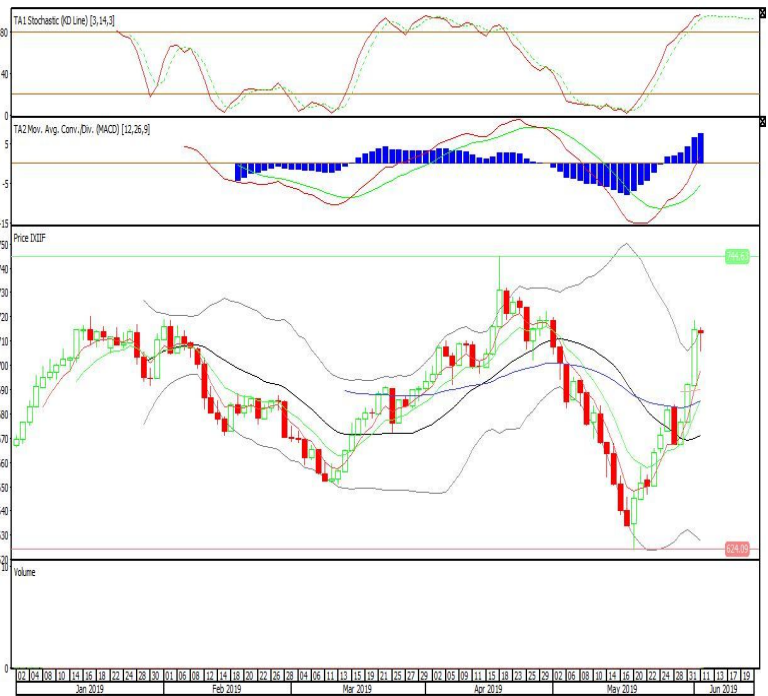


Premier ETF Indonesia Financial

**Rekomendasi: Buy on Weakness**

---Candle ditutup diatas lowerband dengan membentuk pola spinning top yang merupakan sinyal indecision, stochastic overbought, MACD histogram divergence positif. Target harga beli pada level 709 dengan *resist* di level 718 kemudian 723.

**XIIF (713)**

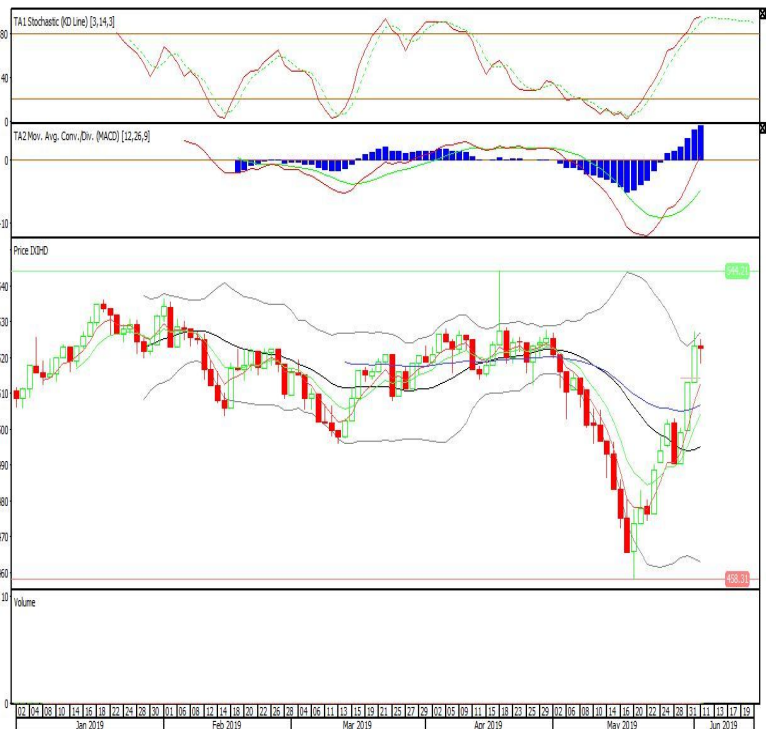


Premier ETF IDX High Dividend 20

**Rekomendasi: Buy on Weakness**

---Candle ditutup diatas EMA5,10 dengan membentuk pola spinning top yang merupakan sinyal indecision, stochastic overbought, MACD histogram divergence positif. Target harga beli pada level 520 dengan *resist* di level 525 kemudian 527.

**XIHD (522)**

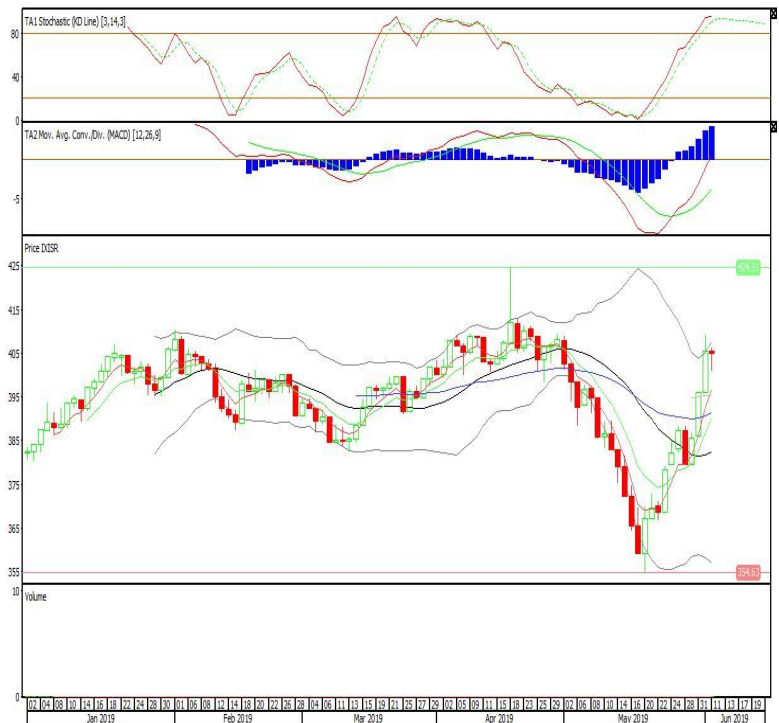


Premier ETF SRI-KEHATI

**Rekomendasi: Buy on Weakness**

---Candle ditutup diatas EMA5,10 dengan membentuk pola spinning top yang merupakan sinyal indecision, stochastic overbought, MACD histogram divergence positif. Target harga beli pada level 402 dengan *resist* di level 407 kemudian 410.

**XISR (404)**



**Head Office****PT INDO PREMIER SEKURITAS**

Wisma GKBI 7/F Suite 718

Jl. Jend. Sudirman No.28

Jakarta 10210 - Indonesia

p +62.21.5793.1168

f +62.21.5793.1167

**ANALYSTS CERTIFICATION.**

The views expressed in this research report accurately reflect the analyst's personal views about any and all of the subject securities or issuers; and no part of the research analyst's compensation was, is, or will be, directly or indirectly, related to the specific recommendations or views expressed in the report.

**DISCLAIMERS**

This research is based on information obtained from sources believed to be reliable, but we do not make any representation or warranty nor accept any responsibility or liability as to its accuracy, completeness or correctness. Opinions expressed are subject to change without notice. This document is prepared for general circulation. Any recommendations contained in this document does not have regard to the specific investment objectives, financial situation and the particular needs of any specific addressee. This document is not and should not be construed as an offer or a solicitation of an offer to purchase or subscribe or sell any securities. PT. Indo Premier Sekuritas or its affiliates may seek or will seek investment banking or other business relationships with the companies in this report.