

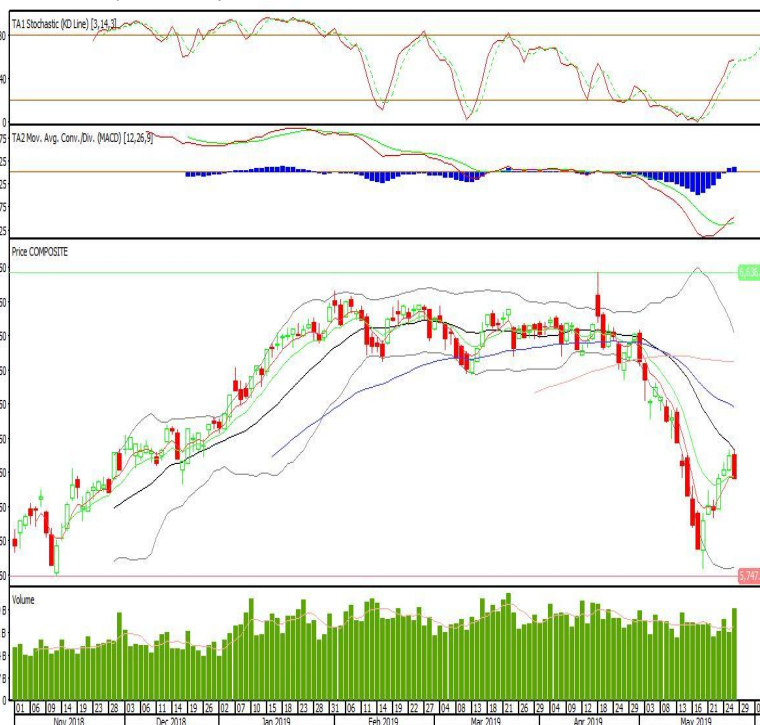
## Technical Corner

### IHSG

**Range: 5.975-6.080**

---Indeks ditutup dengan membentuk pola black closing marubozu yang merupakan sinyal bearish continuation, stochastic netral dan MACD histogram divergence negatif. Target pelemahan indeks pada level 5.975 kemudian 5.920 dengan *resist* di level 6.080 dan 6.130.

### IHSG (6.033)



### Bukit Asam

**Rekomendasi: Buy**

---Candle ditutup di atas EMA5,10 dan membentuk pola white opening marubozu yang merupakan sinyal bullish continuation, stochastic netral dan MACD histogram divergence positif. Target kenaikan harga pada level 3.100 kemudian 3.200 dengan *support* di level 2.890, *cut loss* jika *break* 2.780.

### PTBA (3.000)



**Elnusa**

**Rekomendasi: Buy**

---Candle ditutup di atas EMA5,10 dan membentuk pola small bullish candle, stochastic netral dan MACD bullish cross over. Target kenaikan harga pada level 354 kemudian 358 dengan *support* di level 346, *cut loss* jika *break* 342.

**ELSA (350)**



**Chandra Asri Petrochemical**

**Rekomendasi: Buy**

---Candle ditutup diatas EMA5,10 dan membentuk pola long white marubozu yang merupakan sinyal bullish continuation, stochastic netral dan MACD histogram divergence positif. Target kenaikan harga pada level 5.200 kemudian 5.250 dengan *support* di level 5.050, *cut loss* jika *break* 5.000.

**TPIA (5.125)**

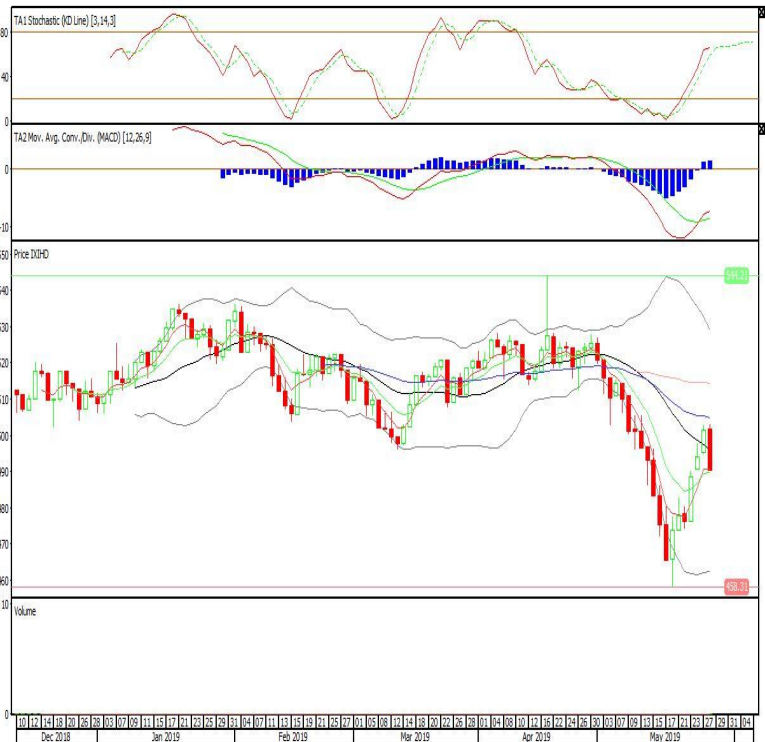


Premier ETF IDX High Dividend 20

**Rekomendasi: SELL**

---Candle ditutup dibawah EMA5 dengan membentuk pola black closing marubozu yang merupakan sinyal bearish continuation, stochastic netral, MACD histogram divergence positif. Target pelemahan harga pada level 479 kemudian 467 dengan *resist* di level 501 dan 512.

**XIHD (490)**

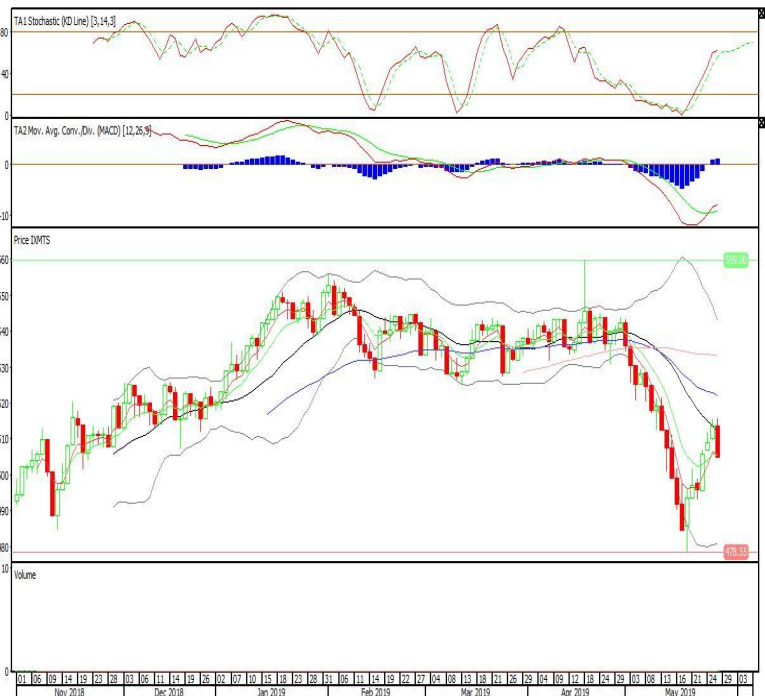


ETF MNC36 Likuid

**Rekomendasi: SELL**

---Candle ditutup dibawah EMA5,10 dengan membentuk pola black closing marubozu yang merupakan sinyal bearish continuation, stochastic netral, MACD histogram divergence positif. Target pelemahan harga pada level 496 kemudian 487 dengan *resist* di level 513 dan 522.

**XMTS (504)**

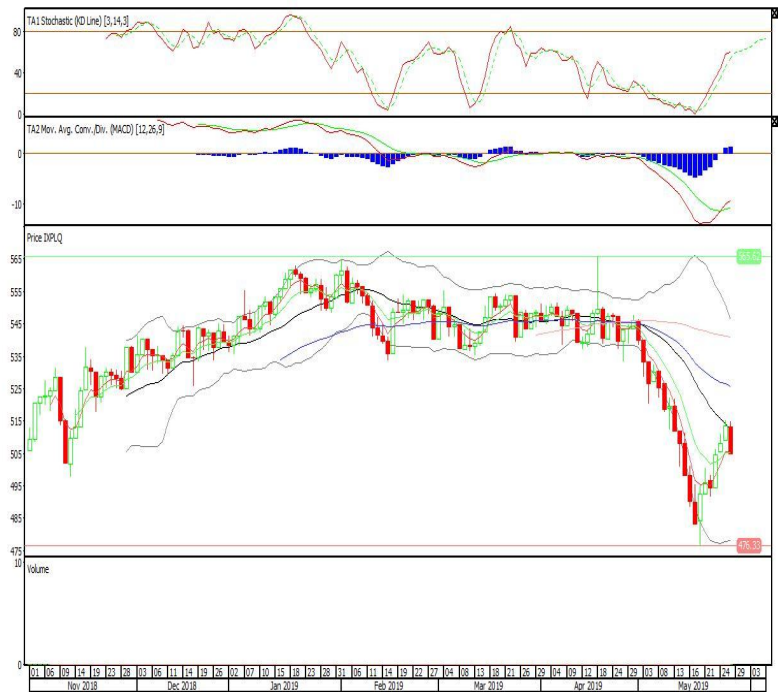


**Pinnacle Enhanced Liquid ETF**

**Rekomendasi: SELL**

---Candle ditutup dibawah EMA5,10 dengan membentuk pola black closing marubozu yang merupakan sinyal bearish continuation, stochastic netral, MACD histogram divergence positif. Target pelemahan harga pada level 496 kemudian 488 dengan *resist* di level 513 dan 521.

**XPLQ (504)**



**Head Office****PT INDO PREMIER SEKURITAS**

Wisma GKBI 7/F Suite 718

Jl. Jend. Sudirman No.28

Jakarta 10210 - Indonesia

p +62.21.5793.1168

f +62.21.5793.1167

**ANALYSTS CERTIFICATION.**

The views expressed in this research report accurately reflect the analyst's personal views about any and all of the subject securities or issuers; and no part of the research analyst's compensation was, is, or will be, directly or indirectly, related to the specific recommendations or views expressed in the report.

**DISCLAIMERS**

This research is based on information obtained from sources believed to be reliable, but we do not make any representation or warranty nor accept any responsibility or liability as to its accuracy, completeness or correctness. Opinions expressed are subject to change without notice. This document is prepared for general circulation. Any recommendations contained in this document does not have regard to the specific investment objectives, financial situation and the particular needs of any specific addressee. This document is not and should not be construed as an offer or a solicitation of an offer to purchase or subscribe or sell any securities. PT. Indo Premier Sekuritas or its affiliates may seek or will seek investment banking or other business relationships with the companies in this report.