

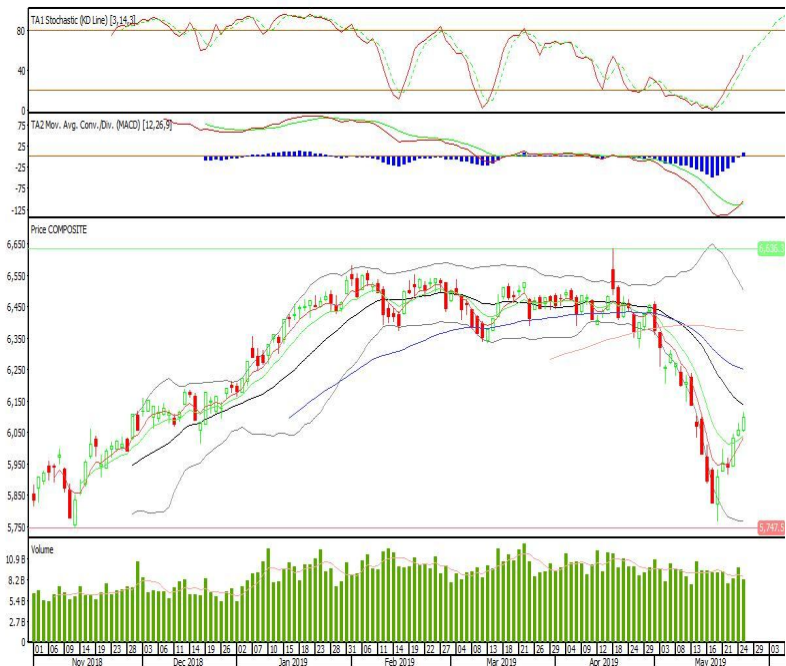
Technical Corner

IHSG

Range: 6.055-6.145

---Indeks kembali ditutup di atas EMA5,10 dengan membentuk pola long white marubozu yang merupakan sinyal bullish continuation, stochastic netral dan MACD histogram divergence positif. Target kenaikan indeks pada level 6.145 kemudian 6.188 dengan *support* di level 6.055 dan 6.014.

IHSG (6.098)



Indofood Sukses Makmur

Rekomendasi: Buy

---Candle ditutup di atas MA20 dan membentuk pola white closing marubozu yang merupakan sinyal bullish continuation, stochastic netral dan MACD histogram divergence positif. Target kenaikan harga pada level 6.700 kemudian 6.875 dengan *support* di level 6.350, *cut loss* jika *break* 6.175.

IINDF (6.525)



Indocement Tunggal Prakarsa

Rekomendasi: Buy

---Candle ditutup di atas MA20 dan membentuk pola long white marubozu yang merupakan sinyal bullish continuation, stochastic netral dan MACD histogram divergence positif. Target kenaikan harga pada level 20.525 kemudian 21.075 dengan *support* di level 19.425, *cut loss* jika *break* 18.875.

INTP (19.975)



Pakuwon Jati

Rekomendasi: Buy

---Candle ditutup diatas MA20 dengan membentuk pola long white marubozu yang merupakan sinyal bullish continuation, stochastic golden cross dan MACD histogram divergence positif Target kenaikan harga pada level 690 kemudian 710 dengan *support* di level 650, *cut loss* jika *break* 630.

PWON (670)

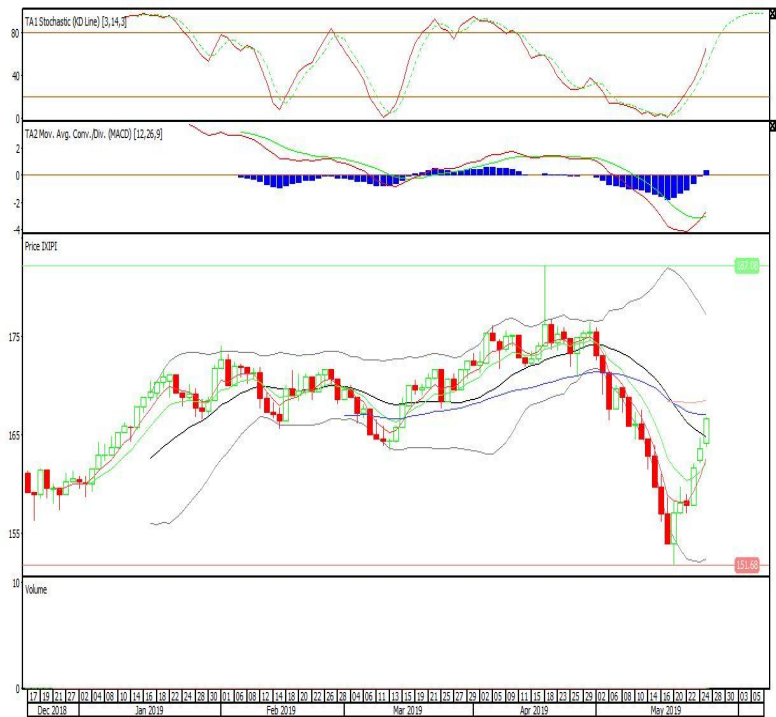


Premier ETF PEFINDO i-Grade

Rekomendasi: Buy

---Candle ditutup diatas MA20 dengan membentuk pola long white marubozu yang merupakan sinyal bullish continuation, stochastic netral, MACD histogram divergence positif. Target kenaikan harga pada level 169 kemudian 171 dengan support di level 164, cut loss jika break 161.

XIPI (166)

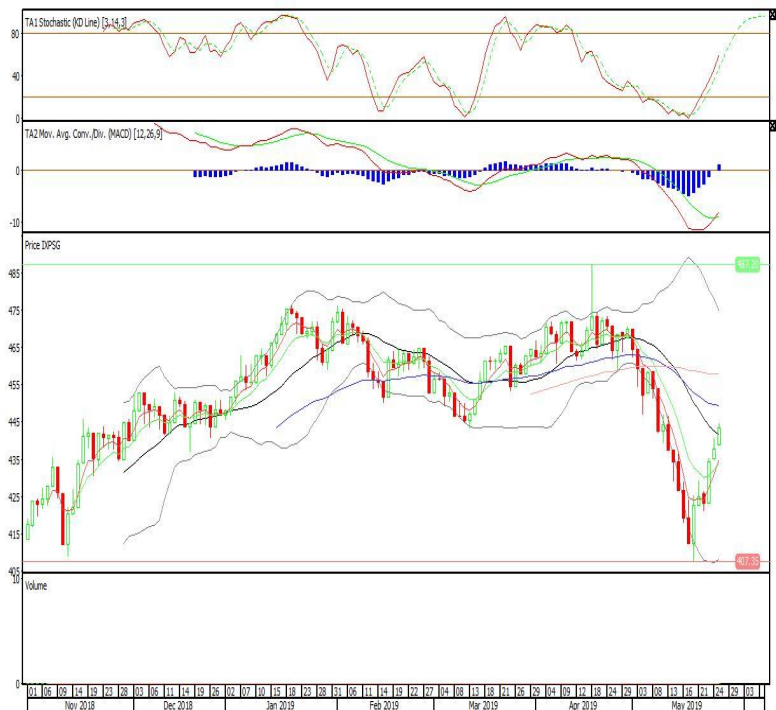


Pinnacle Indonesia ESG ETF

Rekomendasi: Buy

---Candle ditutup diatas MA20 dengan membentuk pola white opening marubozu yang merupakan sinyal bullish continuation, stochastic netral, MACD histogram divergence positif. Target kenaikan harga pada level 447 kemudian 452 dengan support di level 438, cut loss jika break 434.

XPSG (443)

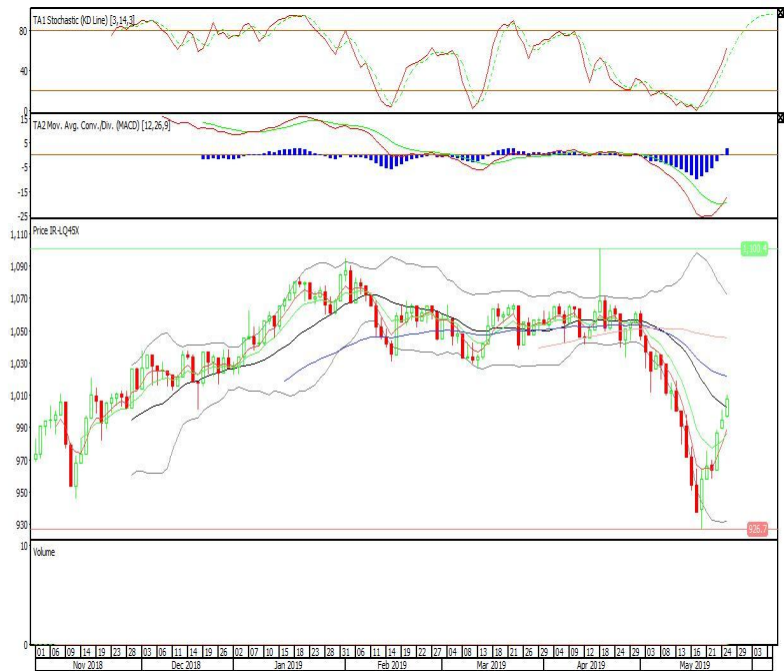


Premier ETF LQ-45

Rekomendasi: Buy

---Candle ditutup diatas MA20 dengan membentuk pola long white marubozu yang merupakan sinyal bullish continuation, stochastic netral, MACD histogram divergence positif. Target kenaikan harga pada level 1.018 kemudian 1.028 dengan support di level 996, cut loss jika break 986.

R-LQ45X (1.007)



Head Office**PT INDO PREMIER SEKURITAS**

Wisma GKBI 7/F Suite 718

Jl. Jend. Sudirman No.28

Jakarta 10210 - Indonesia

p +62.21.5793.1168

f +62.21.5793.1167

ANALYSTS CERTIFICATION.

The views expressed in this research report accurately reflect the analyst's personal views about any and all of the subject securities or issuers; and no part of the research analyst's compensation was, is, or will be, directly or indirectly, related to the specific recommendations or views expressed in the report.

DISCLAIMERS

This research is based on information obtained from sources believed to be reliable, but we do not make any representation or warranty nor accept any responsibility or liability as to its accuracy, completeness or correctness. Opinions expressed are subject to change without notice. This document is prepared for general circulation. Any recommendations contained in this document does not have regard to the specific investment objectives, financial situation and the particular needs of any specific addressee. This document is not and should not be construed as an offer or a solicitation of an offer to purchase or subscribe or sell any securities. PT. Indo Premier Sekuritas or its affiliates may seek or will seek investment banking or other business relationships with the companies in this report.