

## Technical Corner

### IHSG

**Range: 5.960-6.100**

---Indeks ditutup di atas EMA5,10 dan membentuk pola long white marubozu yang merupakan sinyal bullish continuation, stochastic netral dan MACD histogram convergence negatif. Target kenaikan indeks pada level 6.100 kemudian 6.160 dengan *support* di level 5.960 dan 5.890.

### IHSG (6.032)



### Jasa Marga

**Rekomendasi: Buy**

---Candle ditutup di atas EMA5,10 dan membentuk pola long white marubozu yang merupakan sinyal bullish continuation, stochastic netral dan MACD convergence negatif. Target kenaikan harga pada level 5.675 kemudian 5.825 dengan *support* di level 5.325, *cut loss* jika *break* 5.150.

### JSMR (5.500)



**Unilever Indonesia**

**Rekomendasi: Buy**

---Candle ditutup di atas EMA5,10 dan membentuk pola white opening marubozu yang merupakan sinyal bullish continuation, stochastic netral dan MACD bullish cross over. Target kenaikan harga pada level 44.125 kemudian 45.000 dengan *support* di level 42.050, *cut loss* jika *break* 41.500.

**UNVR (43.100)**



**Telekomunikasi Indonesia**

**Rekomendasi: Buy**

---Candle ditutup diatas EMA5,10 dengan membentuk pola white opening marubozu yang merupakan sinyal bullish continuation, stochastic netral dan MACD historgam convergence negatif. Target kenaikan harga pada level 3.780 kemudian 3.900 dengan *support* di level 3.540, *cut loss* jika *break* 3.420.

**TLKM (3.660)**

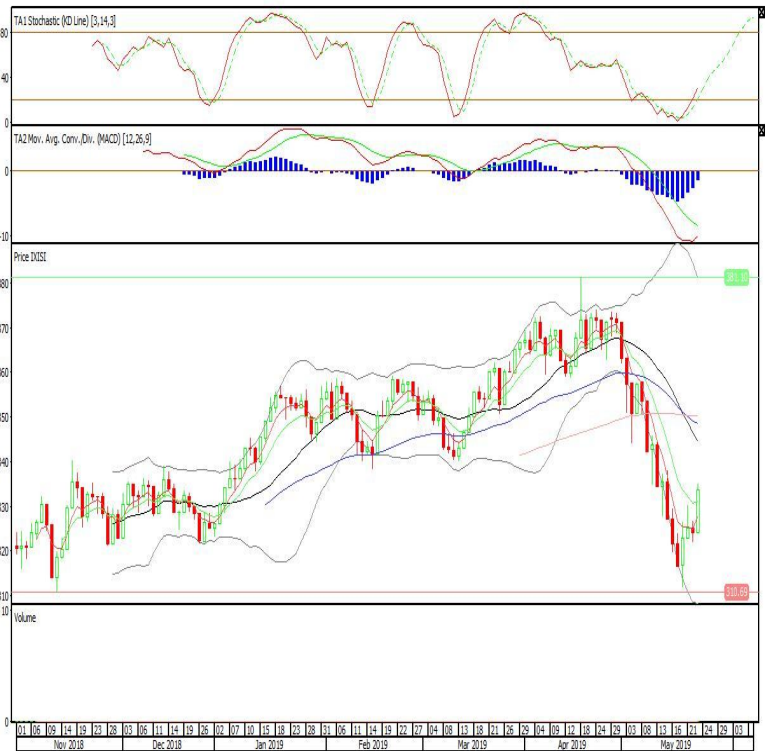


Premier ETF SMinfra18

**Rekomendasi: Buy**

---Candle ditutup diatas EMA5,10 dengan membentuk pola white opening marubozu yang merupakan sinyal bullish continuation, stochastic netral, MACD histogram convergence negatif. Target kenaikan harga pada level 343 kemudian 353 dengan support di level 324, cut loss jika break 314.

**XISI (333)**

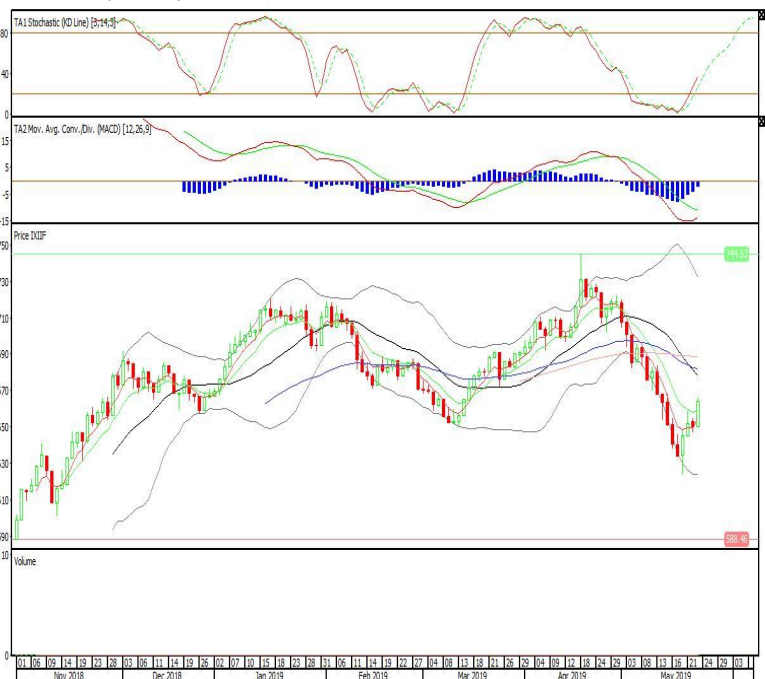


Premier ETF Indonesia Financial

**Rekomendasi: Buy**

---Candle ditutup diatas EMA5,10 dengan membentuk pola white opening marubozu yang merupakan sinyal bullish continuation, stochastic netral, MACD histogram convergence negatif. Target kenaikan harga pada level 678 kemudian 692 dengan support di level 650, cut loss jika break 636.

**XIIF (664)**

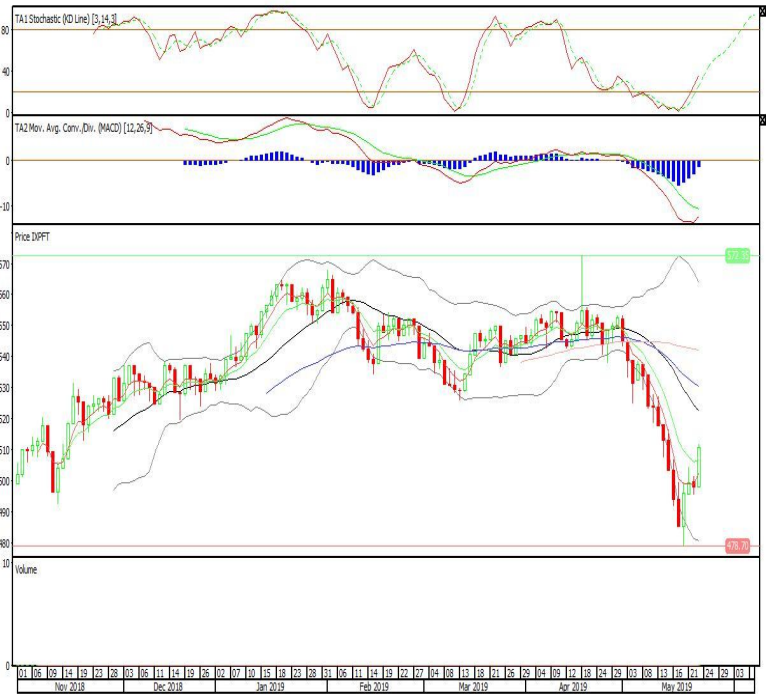


**Pinnacle FTSE Indonesia ETF**

**Rekomendasi: Buy**

---Candle ditutup diatas EMA5,10 dengan membentuk pola white opening marubozu yang merupakan sinyal bullish continuation, stochastic netral, MACD histogram convergence negatif. Target kenaikan harga pada level 523 kemudian 535 dengan support di level 497, cut loss jika break 485.

**XPFT (510)**



**Head Office****PT INDO PREMIER SEKURITAS**

Wisma GKBI 7/F Suite 718

Jl. Jend. Sudirman No.28

Jakarta 10210 - Indonesia

p +62.21.5793.1168

f +62.21.5793.1167

**ANALYSTS CERTIFICATION.**

The views expressed in this research report accurately reflect the analyst's personal views about any and all of the subject securities or issuers; and no part of the research analyst's compensation was, is, or will be, directly or indirectly, related to the specific recommendations or views expressed in the report.

**DISCLAIMERS**

This research is based on information obtained from sources believed to be reliable, but we do not make any representation or warranty nor accept any responsibility or liability as to its accuracy, completeness or correctness. Opinions expressed are subject to change without notice. This document is prepared for general circulation. Any recommendations contained in this document does not have regard to the specific investment objectives, financial situation and the particular needs of any specific addressee. This document is not and should not be construed as an offer or a solicitation of an offer to purchase or subscribe or sell any securities. PT. Indo Premier Sekuritas or its affiliates may seek or will seek investment banking or other business relationships with the companies in this report.