

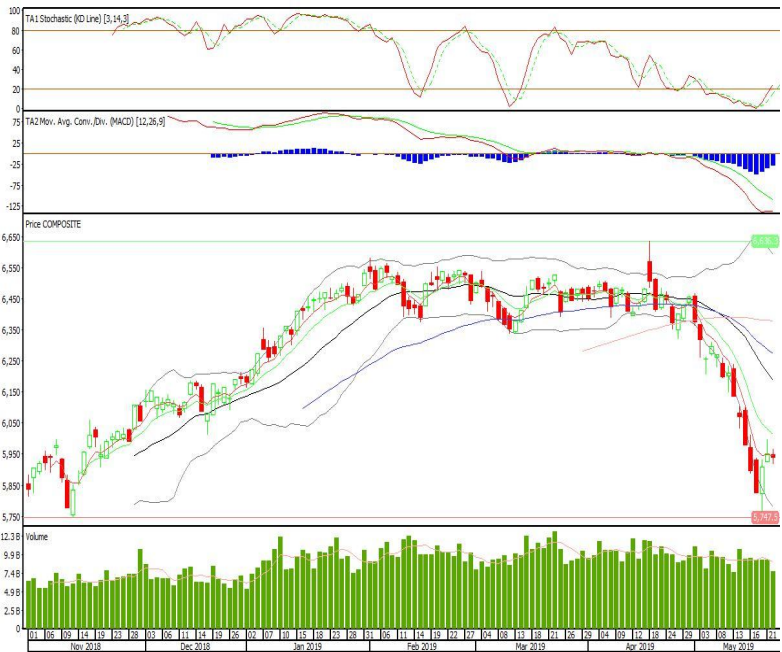
Technical Corner

IHSG

Range: 5.900-5.980

---Indeks ditutup dengan membentuk pola spinning top yang merupakan sinyal indecision, stochastic netral dan MACD histogram convergence negatif. Target pelemahan indeks pada level 5.900 kemudian 5.865 dengan *resist* di level 5.980 dan 6.010.

IHSG (5.939)



Medco Energi International

Rekomendasi: Buy

---Candle ditutup di atas EMA5,10 dan membentuk pola long white marubozu yang merupakan sinyal bullish continuation, stochastic netral dan MACD bullish cross over. Target kenaikan harga pada level 825 kemudian 850 dengan *support* di level 770, *cut loss* jika break 740.

MEDC (795)



Aces Hardware Indonesia

Rekomendasi: Buy

---Candle ditutup di atas EMA5,10 dan membentuk pola long white marubozu yang merupakan sinyal bullish continuation, stochastic golden cross dan MACD histogram divergence positif. Target kenaikan harga pada level 1.700 kemudian 1.730 dengan *support* di level 1.630, *cut loss* jika *break* 1.610.

ACES (1.670)



Mayora Indah

Rekomendasi: Buy

---Candle ditutup tepat di EMA5 dan membentuk pola spinning top yang merupakan sinyal indecision, stochastic golden cross dan MACD historgam convergence negatif. Target kenaikan harga pada level 2.590 kemudian 2.630 dengan *support* di level 2.550, *cut loss* jika *break* 2.530.

MYOR (2.570)

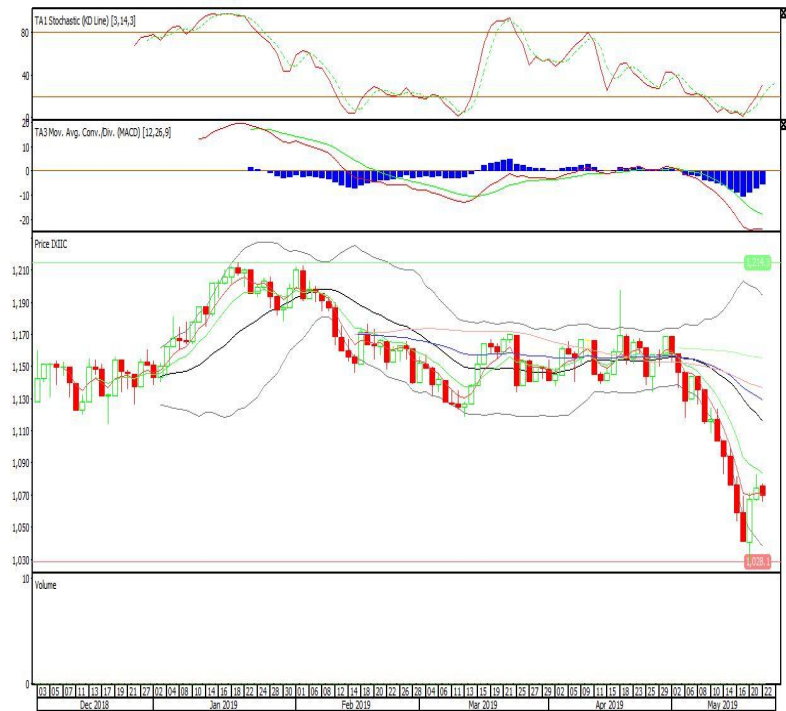


Premier ETF Indonesia Consumer

Rekomendasi: SELL

---Candle ditutup dibawah EMA5,10 dengan membentuk pola small bearish candle, stochastic netral, MACD histogram convergence negatif. Target pelemahan harga pada level 1.063 kemudian 1.057 dengan *resist* di level 1.075 dan 1.082.

XIIC (1.069)

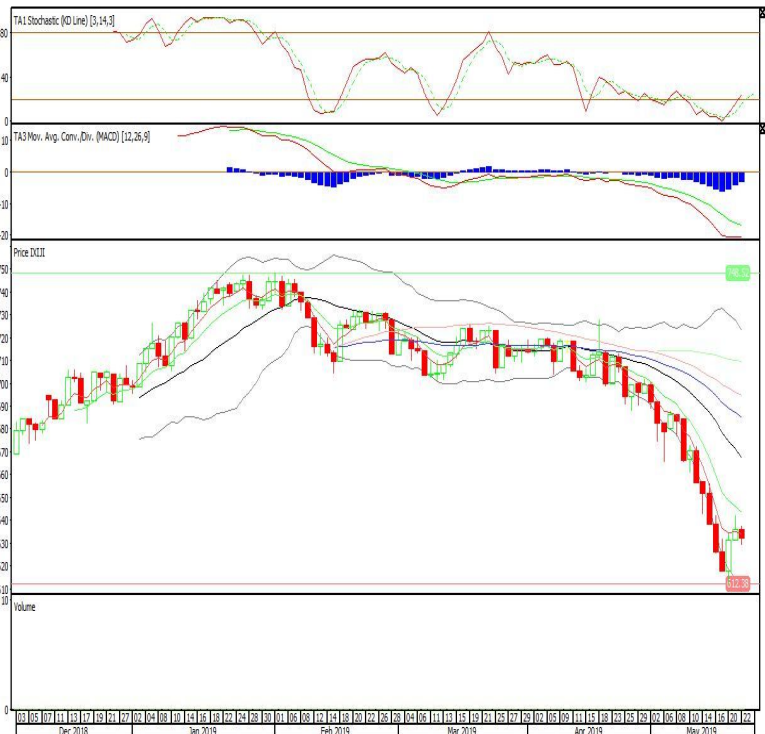


Premier ETF JII

Rekomendasi: SELL

---Candle ditutup dibawah EMA5,10 dengan membentuk pola small bearish candle, stochastic netral, MACD histogram convergence negatif. Target pelemahan harga pada level 628 kemudian 625 dengan *resist* di level 635 dan 639.

XIJI (632)

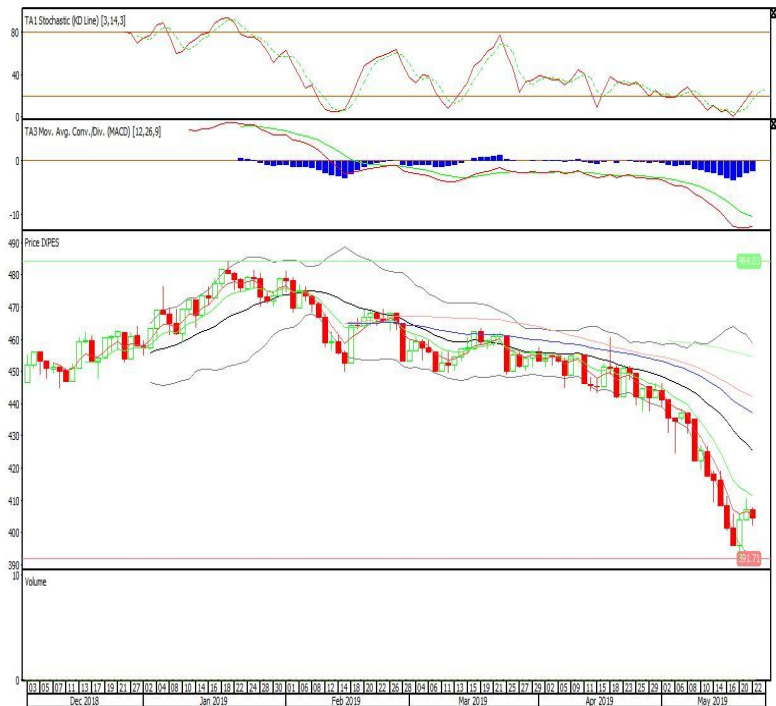


Pinnacle Enhanced Sharia ETF

Rekomendasi: SELL

---Candle ditutup dibawah EMA5,10 dengan membentuk pola small bearish candle, stochastic netral, MACD histogram convergence negatif. Target pelemahan harga pada level 401 kemudian 399 dengan *resist* di level 407 dan 409.

XPES (404)



Head Office**PT INDO PREMIER SEKURITAS**

Wisma GKBI 7/F Suite 718

Jl. Jend. Sudirman No.28

Jakarta 10210 - Indonesia

p +62.21.5793.1168

f +62.21.5793.1167

ANALYSTS CERTIFICATION.

The views expressed in this research report accurately reflect the analyst's personal views about any and all of the subject securities or issuers; and no part of the research analyst's compensation was, is, or will be, directly or indirectly, related to the specific recommendations or views expressed in the report.

DISCLAIMERS

This research is based on information obtained from sources believed to be reliable, but we do not make any representation or warranty nor accept any responsibility or liability as to its accuracy, completeness or correctness. Opinions expressed are subject to change without notice. This document is prepared for general circulation. Any recommendations contained in this document does not have regard to the specific investment objectives, financial situation and the particular needs of any specific addressee. This document is not and should not be construed as an offer or a solicitation of an offer to purchase or subscribe or sell any securities. PT. Indo Premier Sekuritas or its affiliates may seek or will seek investment banking or other business relationships with the companies in this report.