

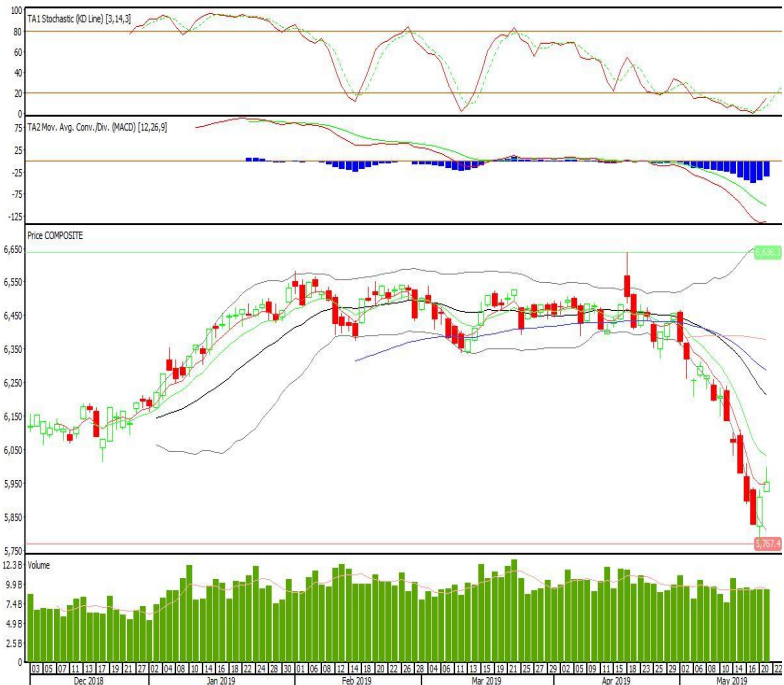
# Technical Corner

**IHSG**

**Range: 5.905-5.995**

---Indeks ditutup di atas EMA5 namun hanya membentuk pola small bullish candle dengan volume yang tidak terlalu besar, stochastic oversold dan MACD histogram convergence negatif. Target pelemahan indeks pada level 5.905 kemudian 5.860 dengan *resist* di level 5.995 dan 6.050.

**IHSG (5.951)**



**Indofood CBP Sukses Makmur**

**Rekomendasi: Buy**

---Candle ditutup di atas EMA5,10 dan membentuk pola white opening marubozu yang merupakan sinyal bullish continuation, stochastic golden cross dan MACD bullish cross over. Target kenaikan harga pada level 9.850 kemudian 10.100 dengan *support* di level 9.400, *cut loss* jika break 9.200.

**ICBP (9.625)**



ASII (7.000)

Astra International

**Rekomendasi: Buy**

---Candle ditutup di atas EMA5 dan membentuk pola small bullish candle, stochastic oversold dan MACD histogram convergence negatif. Target kenaikan harga pada level 7.100 kemudian 7.200 dengan *support* di level 6.900, *cut loss* jika *break* 6.800.



BBNI (8.600)

Bank Negara Indonesia

**Rekomendasi: Buy**

---Candle ditutup diatas EMA5,10 dengan membentuk pola white closing marubozu yang merupakan sinyal bullish continuation, stochastic netral dan MACD histogram convergence negatif. Target kenaikan harga pada level 8.750 kemudian 8.900 dengan *support* di level 8.450, *cut loss* jika *break* 8.300.



**Batavia Smart Liquid ETF**

**Rekomendasi: Buy**

---Candle ditutup diatas EMA5 dengan membentuk pola white opening marubozu yang merupakan sinyal bullish continuation, stochastic oversold, MACD histogram convergence negatif. Target kenaikan harga pada level 467 kemudian 470 dengan support di level 459, cut loss jika break 456.

**XBLO (463)**

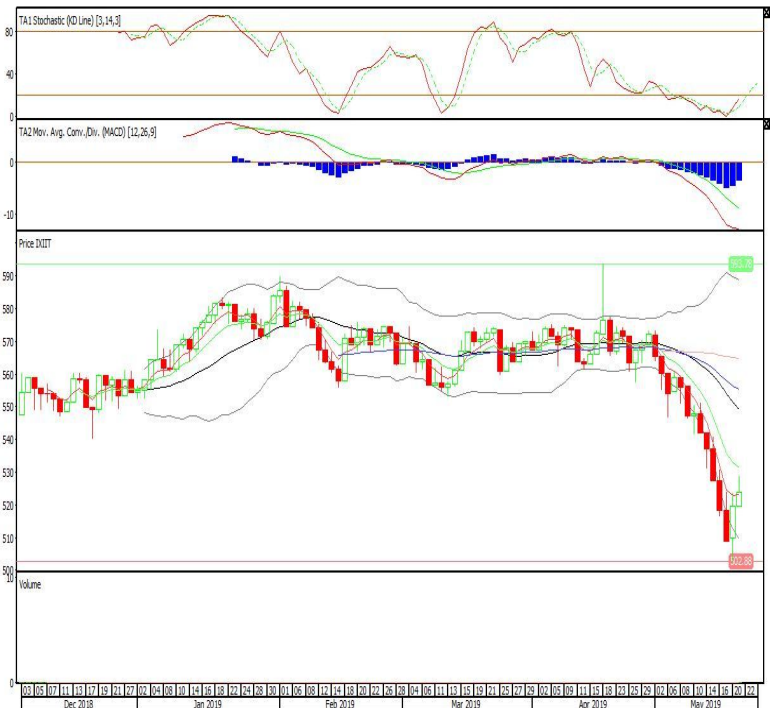


**Premier ETF IDX30**

**Rekomendasi: Buy**

---Candle ditutup diatas EMA5 dengan membentuk pola white opening marubozu yang merupakan sinyal bullish continuation, stochastic oversold, MACD histogram convergence negatif. Target kenaikan harga pada level 527 kemudian 531 dengan support di level 519, cut loss jika break 515.

**XIIT (523)**

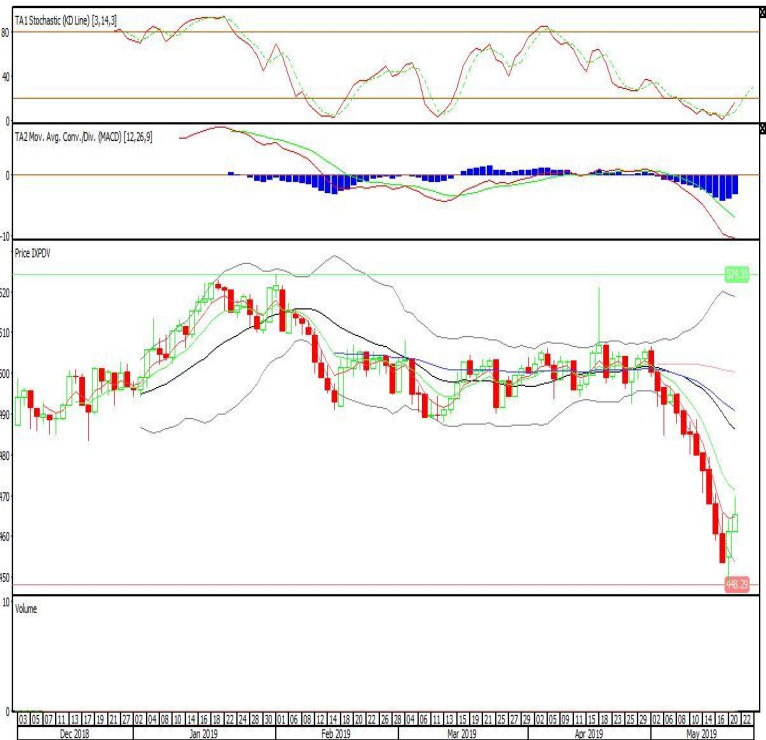


**Pinnacle Core High Dividend ETF**

**Rekomendasi: Buy**

---Candle ditutup diatas EMA5 dengan membentuk pola white opening marubozu yang merupakan sinyal bullish continuation, stochastic oversold, MACD histogram convergence negatif. Target kenaikan harga pada level 468 kemudian 472 dengan support di level 461, cut loss jika break 457.

**XPDV (465)**



**Head Office****PT INDO PREMIER SEKURITAS**

Wisma GKBI 7/F Suite 718

Jl. Jend. Sudirman No.28

Jakarta 10210 - Indonesia

p +62.21.5793.1168

f +62.21.5793.1167

**ANALYSTS CERTIFICATION.**

The views expressed in this research report accurately reflect the analyst's personal views about any and all of the subject securities or issuers; and no part of the research analyst's compensation was, is, or will be, directly or indirectly, related to the specific recommendations or views expressed in the report.

**DISCLAIMERS**

This research is based on information obtained from sources believed to be reliable, but we do not make any representation or warranty nor accept any responsibility or liability as to its accuracy, completeness or correctness. Opinions expressed are subject to change without notice. This document is prepared for general circulation. Any recommendations contained in this document does not have regard to the specific investment objectives, financial situation and the particular needs of any specific addressee. This document is not and should not be construed as an offer or a solicitation of an offer to purchase or subscribe or sell any securities. PT. Indo Premier Sekuritas or its affiliates may seek or will seek investment banking or other business relationships with the companies in this report.