

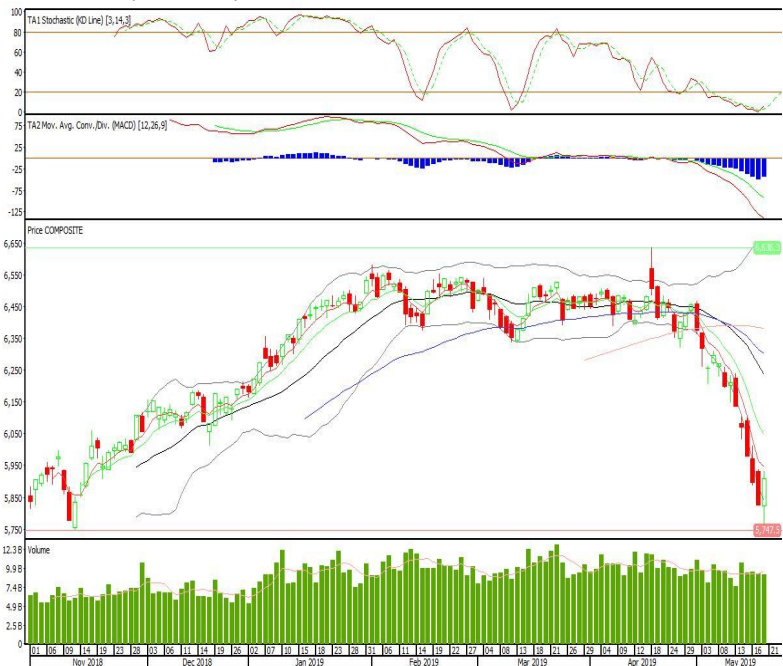
## Technical Corner

### IHSG

**Range: 5.830-5.980**

---Indeks ditutup dengan membentuk pola long white marubozu yang merupakan sinyal bullish continuation, stochastic golden cross dan MACD histogram convergence negatif. Target kenaikan indeks pada level 5.980 kemudian 6.050 dengan *support* di level 5.830 dan 5.750.

### IHSG (5.907)

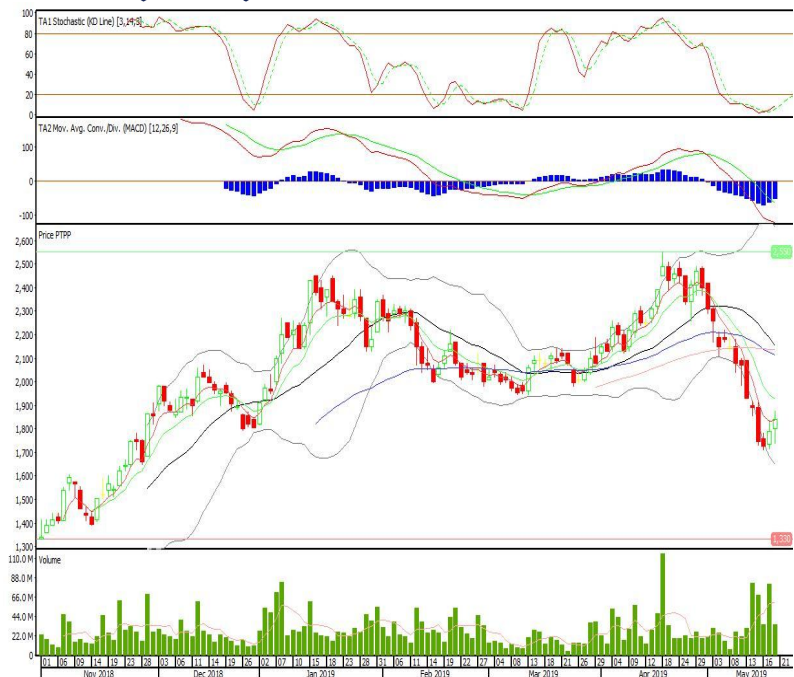


### Pembangunan Perumahan

**Rekomendasi: Buy**

---Candle ditutup tepat di EMA5 dan membentuk pola long white marubozu yang merupakan sinyal bullish continuation, stochastic oversold dan MACD histogram convergence negatif. Target kenaikan harga pada level 1.900 kemudian 1.950 dengan *support* di level 1.785, *cut loss* jika *break* 1.725.

### PTPP (1.840)

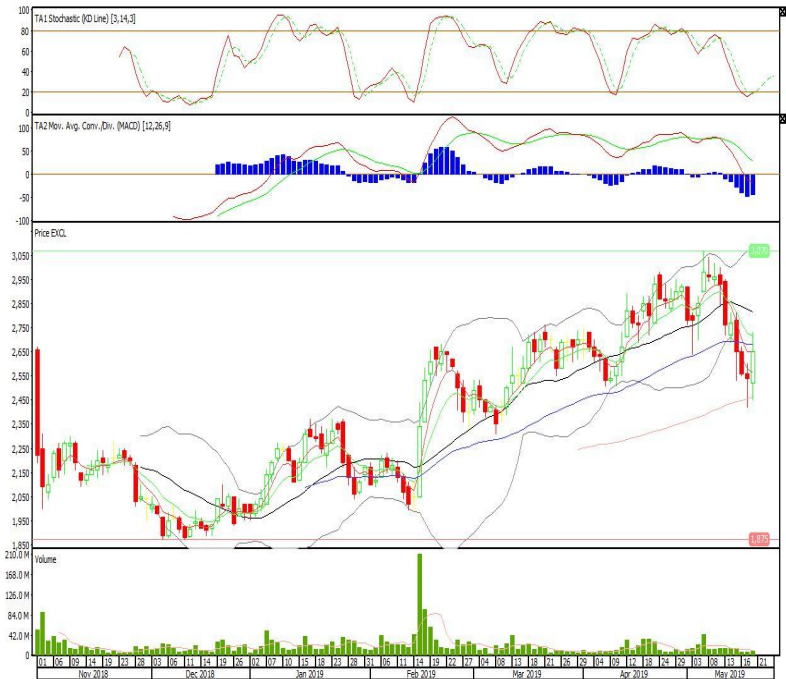


**XL Axiata**

**Rekomendasi: Buy**

---Candle ditutup tepat di EMA5 dan membentuk pola long white marubozu yang merupakan sinyal bullish continuation, stochastic golden cross dan MACD histogram convergence negatif. Target kenaikan harga pada level 2.760 kemudian 2.850 dengan support di level 2.540, cut loss jika break 2.450.

**EXCL (2.650)**



**Bank Central Asia**

**Rekomendasi: Buy**

---Candle ditutup diatas EMA5 dengan membentuk pola long white marubozu yang merupakan sinyal bullish continuation, stochastic oversold dan MACD histogram convergence negatif. Target kenaikan harga pada level 27.900 kemudian 28.900 dengan support di level 25.900, cut loss jika break 24.900.

**BBCA (26.900)**



**Pinnacle Enhanced Liquid ETF**

**Rekomendasi: Buy**

---Candle ditutup diatas lowerband dengan membentuk pola long white marubozu yang merupakan sinyal bullish continuation, stochastic oversold, MACD histogram convergence negatif. Target kenaikan harga pada level 501 kemudian 509 dengan *support* di level 484, *cut loss* jika *break* 475.

**XPLQ (492)**



**Pinnacle Indonesia Large-Cap ETF**

**Rekomendasi: Buy**

---Candle ditutup diatas lowerband dengan membentuk pola long white marubozu yang merupakan sinyal bullish continuation, stochastic oversold, MACD histogram convergence negatif. Target kenaikan harga pada level 485 kemudian 494 dengan *support* di level 468, *cut loss* jika *break* 459.

**XPLC (476)**

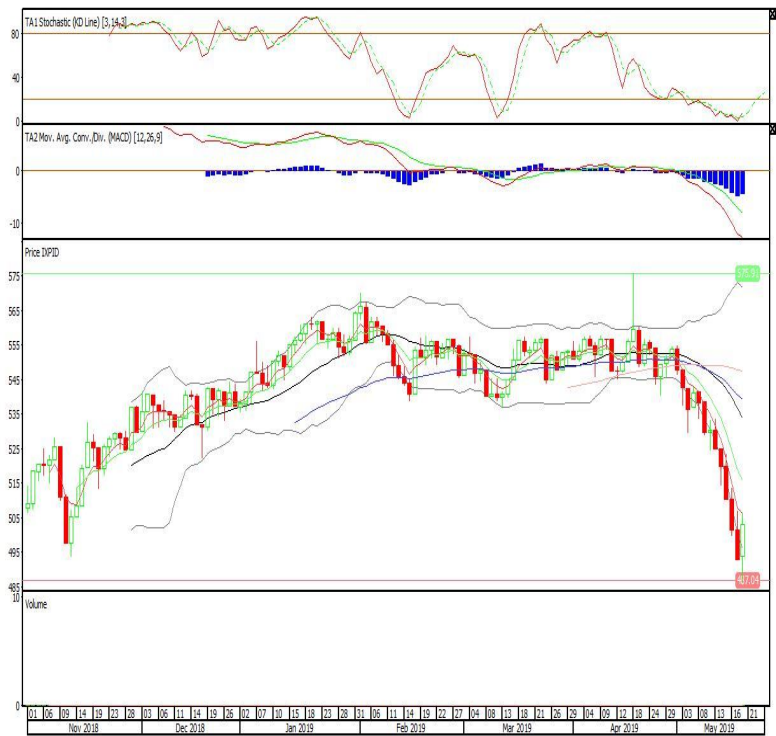


**Pinnacle IDX30 ETF**

**Rekomendasi: Buy**

---Candle ditutup diatas lowerband dengan membentuk pola long white marubozu yang merupakan sinyal bullish continuation, stochastic oversold, MACD histogram convergence negatif. Target kenaikan harga pada level 512 kemudian 521 dengan *support* di level 493, *cut loss* jika *break* 484.

**XPID (502)**



**Head Office****PT INDO PREMIER SEKURITAS**

Wisma GKBI 7/F Suite 718

Jl. Jend. Sudirman No.28

Jakarta 10210 - Indonesia

p +62.21.5793.1168

f +62.21.5793.1167

**ANALYSTS CERTIFICATION.**

The views expressed in this research report accurately reflect the analyst's personal views about any and all of the subject securities or issuers; and no part of the research analyst's compensation was, is, or will be, directly or indirectly, related to the specific recommendations or views expressed in the report.

**DISCLAIMERS**

This research is based on information obtained from sources believed to be reliable, but we do not make any representation or warranty nor accept any responsibility or liability as to its accuracy, completeness or correctness. Opinions expressed are subject to change without notice. This document is prepared for general circulation. Any recommendations contained in this document does not have regard to the specific investment objectives, financial situation and the particular needs of any specific addressee. This document is not and should not be construed as an offer or a solicitation of an offer to purchase or subscribe or sell any securities. PT. Indo Premier Sekuritas or its affiliates may seek or will seek investment banking or other business relationships with the companies in this report.