

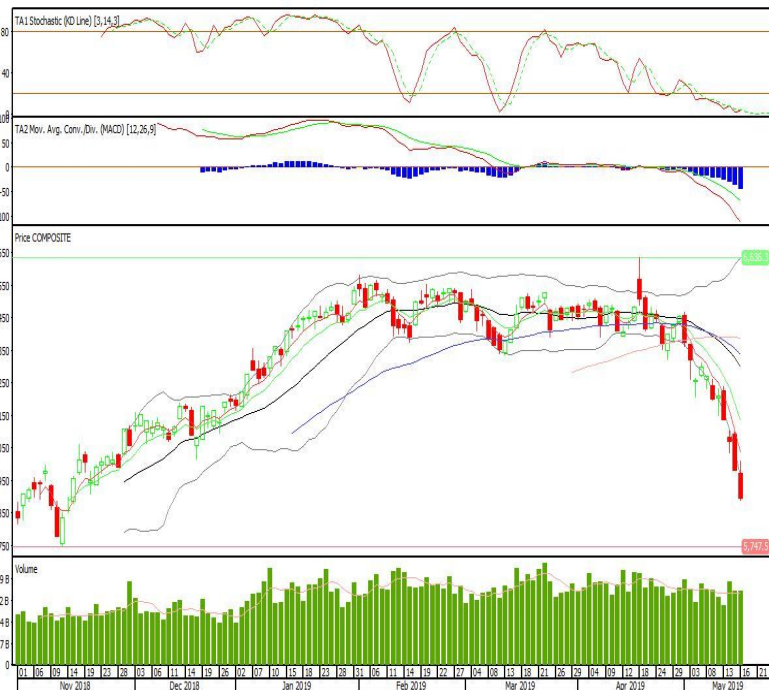
## Technical Corner

### IHSG

**Range: 5.820-5.970**

---Indeks meskipun membentuk pola long black marubozu yang merupakan sinyal bearish continuation namun sudah overshoot lower band, stochastic oversold sedangkan MACD histogram divergence negatif. Target kenaikan indeks pada level 5.970 kemudian 6.045 dengan *support* di level 5.820 dan 5.750.

### IHSG (5.895)



### Siloam International Hospitals

**Rekomendasi: Buy**

---Candle ditutup diatas EMA5,10 dengan membentuk pola long white marubozu yang merupakan sinyal bullish continuation, stochastic netral, MACD histogram divergence negatif. Target kenaikan harga pada level 4.650 kemudian 4.800 dengan *support* di level 4.350, *cut loss* jika *break* 4.200.

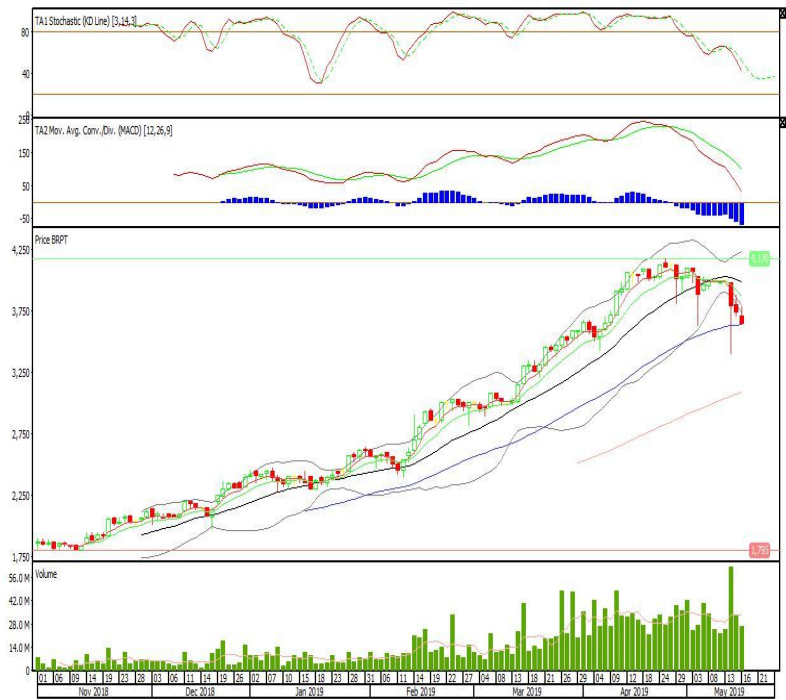
### SIL0 (4.500)



**Barito Pacific**

**Rekomendasi: Buy on Weakness**  
 ---Candle ditutup di bawah EMA5,10 dan membentuk pola small bearish candle, stochastic netral dan MACD histogram divergence negatif. Target harga beli pada level 3.590 dengan resist di level 3.710 kemudian 3.770.

**BRPT (3.650)**



**Mitra Keluarga Karyasehat**

**Rekomendasi: Buy**  
 ---Candle ditutup diatas EMA5,10 dengan membentuk pola long white marubozu yang merupakan sinyal bullish continuation, stochastic netral dan MACD histogram convergence negatif. Target kenaikan harga pada level 2.130 kemudian 2.160 dengan support di level 2.070, cut loss jika break 2.040.

**MIKA (2.100)**

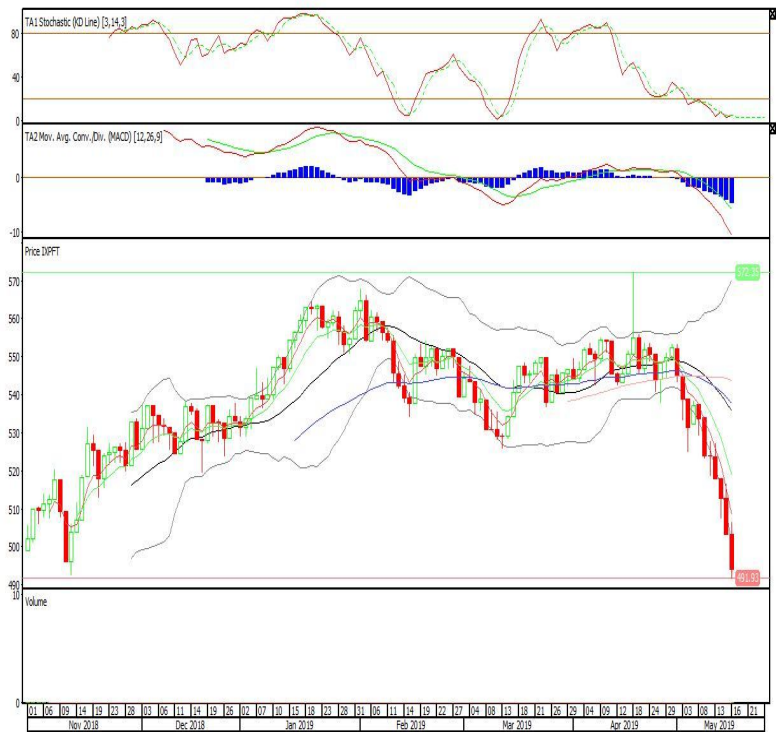


**Pinnacle FTSE Indonesia ETF**

**Rekomendasi: SELL**

---Candle ditutup dibawah lowerband dengan membentuk pola long black marubozu yang merupakan sinyal bearish continuation, stochastic oversold, MACD histogram divergence negatif. Target pelemahan harga pada level 484 kemudian 475 dengan *resist* di level 503 dan 512.

**XPFT (494)**



**Premier ETF IDX High Dividend 20**

**Rekomendasi: SELL**

---Candle ditutup dibawah lowerband dengan membentuk pola long black marubozu yang merupakan sinyal bearish continuation, stochastic oversold, MACD histogram divergence negatif. Target pelemahan harga pada level 467 kemudian 459 dengan *resist* di level 483 dan 491.

**XIHD (475)**

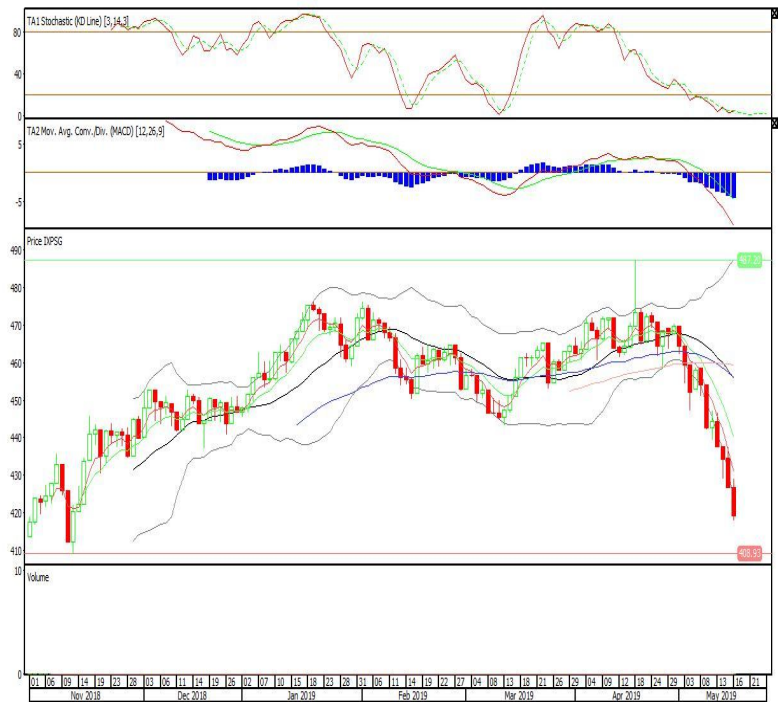


**Pinnacle Indonesia ESG ETF**

**Rekomendasi: SELL**

---Candle ditutup dibawah lowerband dengan membentuk pola long black marubozu yang merupakan sinyal bearish continuation, stochastic oversold, MACD histogram divergence negatif. Target pelemahan harga pada level 411 kemudian 404 dengan resist di level 426 dan 434.

**XPSG (419)**



**Head Office****PT INDO PREMIER SEKURITAS**

Wisma GKBI 7/F Suite 718

Jl. Jend. Sudirman No.28

Jakarta 10210 - Indonesia

p +62.21.5793.1168

f +62.21.5793.1167

**ANALYSTS CERTIFICATION.**

The views expressed in this research report accurately reflect the analyst's personal views about any and all of the subject securities or issuers; and no part of the research analyst's compensation was, is, or will be, directly or indirectly, related to the specific recommendations or views expressed in the report.

**DISCLAIMERS**

This research is based on information obtained from sources believed to be reliable, but we do not make any representation or warranty nor accept any responsibility or liability as to its accuracy, completeness or correctness. Opinions expressed are subject to change without notice. This document is prepared for general circulation. Any recommendations contained in this document does not have regard to the specific investment objectives, financial situation and the particular needs of any specific addressee. This document is not and should not be construed as an offer or a solicitation of an offer to purchase or subscribe or sell any securities. PT. Indo Premier Sekuritas or its affiliates may seek or will seek investment banking or other business relationships with the companies in this report.