

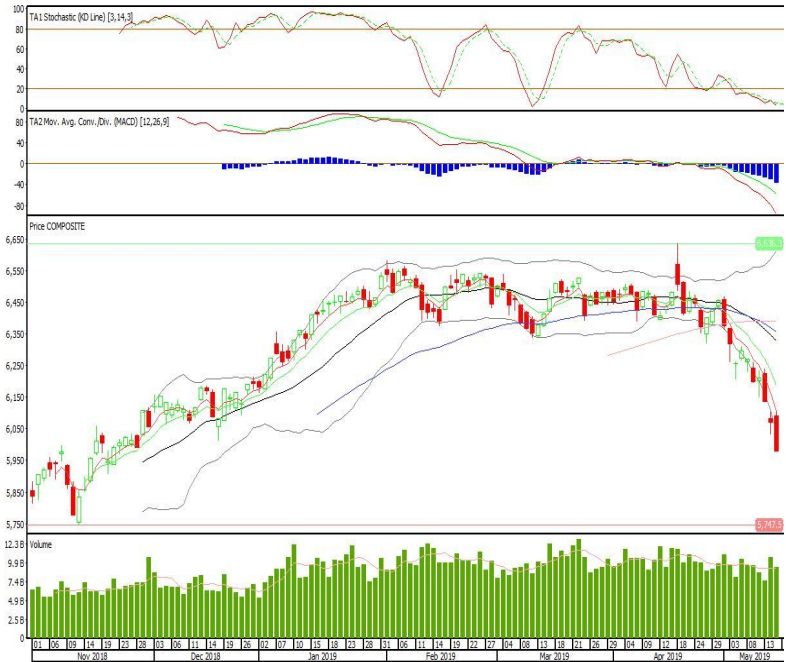
Technical Corner

IHSG

Range: 5.905 -6.050

---Indeks ditutup di bawah EMA5,10 dan membentuk pola black closing marubozu yang merupakan sinyal bearish continuation, MACD histogram divergence negatif sedangkan stochastic oversold. Target pelemahan indeks pada level 5.905 kemudian 5.840 dengan resist di level 6.050 dan 6.130.

IHSG (5.980)



Indofood CBP Sukses Makmur

Rekomendasi: Buy on Weakness

---Candle dibuka dengan gap down dan ditutup di bawah EMA5,10 serta membentuk pola small bullish candle, stochastic netral dan MACD histogram convergence positif. Target harga beli pada level 9.425 dengan resist di level 9.600 kemudian 9.700.

ICBP (9.525)



United Tractors

Rekomendasi: Buy on Weakness

---Candle ditutup di bawah EMA5,10 dan membentuk pola small bearish candle, stochastic oversold dan MACD histogram divergence negatif. Target harga beli pada level 25.000 dengan *resist* di level 25.800 kemudian 26.200.

UNTR (25.350)



Mayora Indah

Rekomendasi: Buy on Weakness

---Candle ditutup dibawah EMA5,10 dengan membentuk pola spinning top yang merupakan sinyal indecision, stochastic netral dan MACD histogram convergence positif. Target harga beli pada level 2.590 dengan *resist* di level 2.640 kemudian 2.670.

MYOR (2.610)

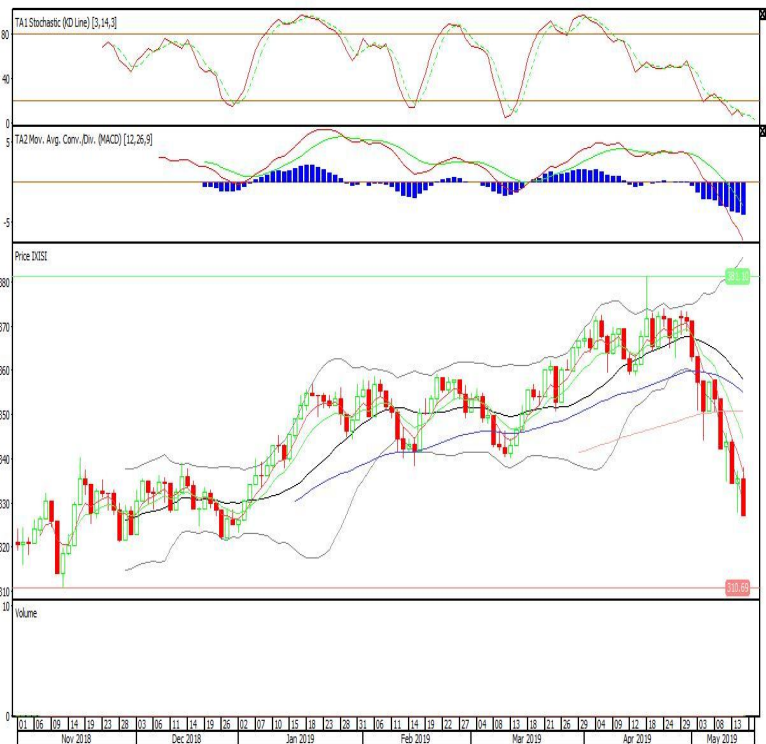


Premier ETF SMinfra18

Rekomendasi: SELL

---Candle ditutup dibawah lowerband dengan membentuk pola black closing marubozu yang merupakan sinyal bearish continuation, stochastic oversold, MACD histogram divergence negatif. Target pelemahan harga pada level 319 kemudian 310 dengan *resist* di level 335 dan 343.

XISI (327)

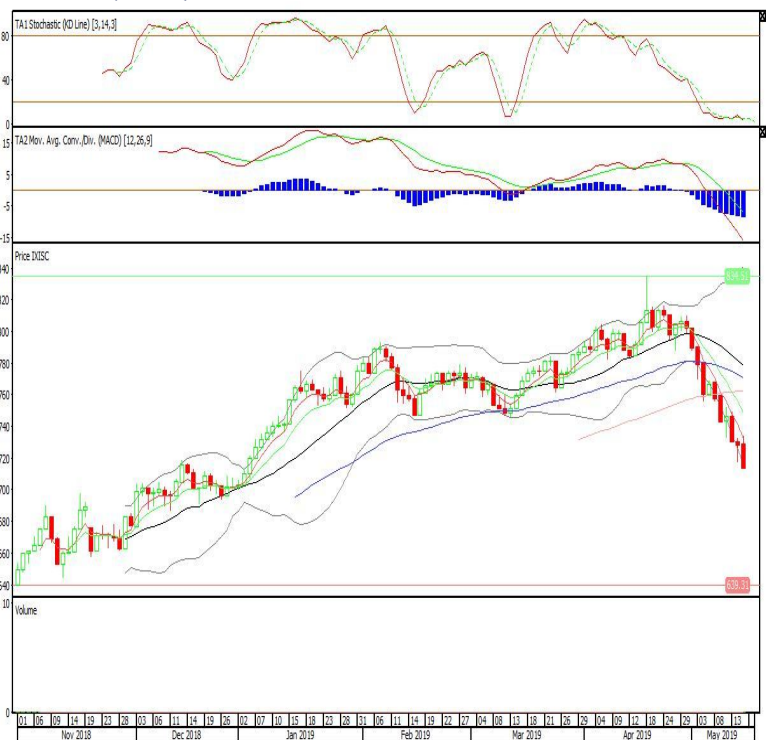


Premier ETF Indonesia Stated-Owned Companies

Rekomendasi: SELL

---Candle ditutup dibawah lowerband dengan membentuk pola black closing marubozu yang merupakan sinyal bearish continuation, stochastic oversold, MACD histogram divergence negatif. Target pelemahan harga pada level 698 kemudian 683 dengan *resist* di level 728 dan 743.

XISC (713)

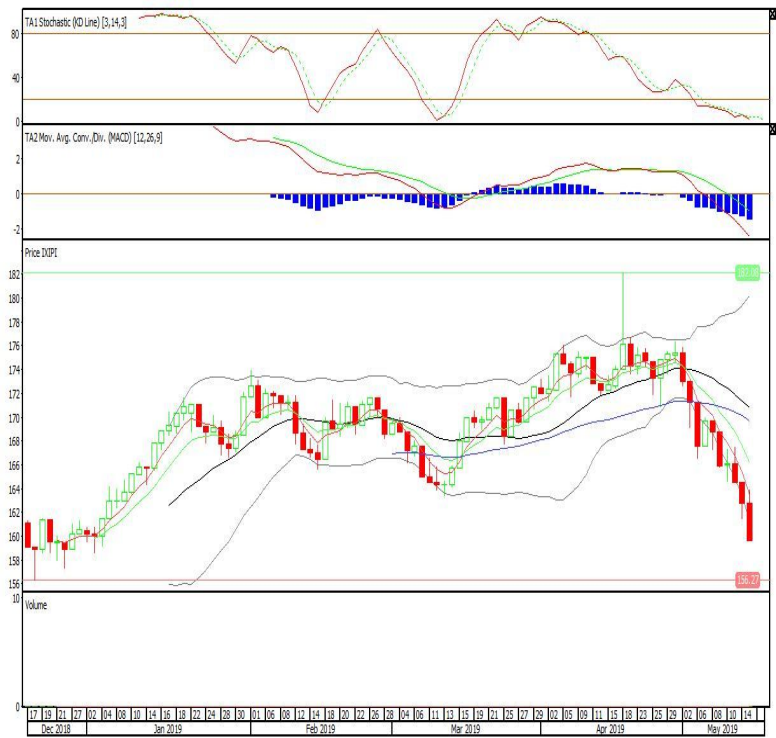


Premier ETF PEFINDO i-Grade

Rekomendasi: SELL

---Candle ditutup dibawah lowerband dengan membentuk pola black closing marubozu yang merupakan sinyal bearish continuation, stochastic oversold, MACD histogram divergence negatif. Target pelemahan harga pada level 156 kemudian 153 dengan *resist* di level 162 dan 166.

XIPI (159)



Head Office**PT INDO PREMIER SEKURITAS**

Wisma GKBI 7/F Suite 718

Jl. Jend. Sudirman No.28

Jakarta 10210 - Indonesia

p +62.21.5793.1168

f +62.21.5793.1167

ANALYSTS CERTIFICATION.

The views expressed in this research report accurately reflect the analyst's personal views about any and all of the subject securities or issuers; and no part of the research analyst's compensation was, is, or will be, directly or indirectly, related to the specific recommendations or views expressed in the report.

DISCLAIMERS

This research is based on information obtained from sources believed to be reliable, but we do not make any representation or warranty nor accept any responsibility or liability as to its accuracy, completeness or correctness. Opinions expressed are subject to change without notice. This document is prepared for general circulation. Any recommendations contained in this document does not have regard to the specific investment objectives, financial situation and the particular needs of any specific addressee. This document is not and should not be construed as an offer or a solicitation of an offer to purchase or subscribe or sell any securities. PT. Indo Premier Sekuritas or its affiliates may seek or will seek investment banking or other business relationships with the companies in this report.