

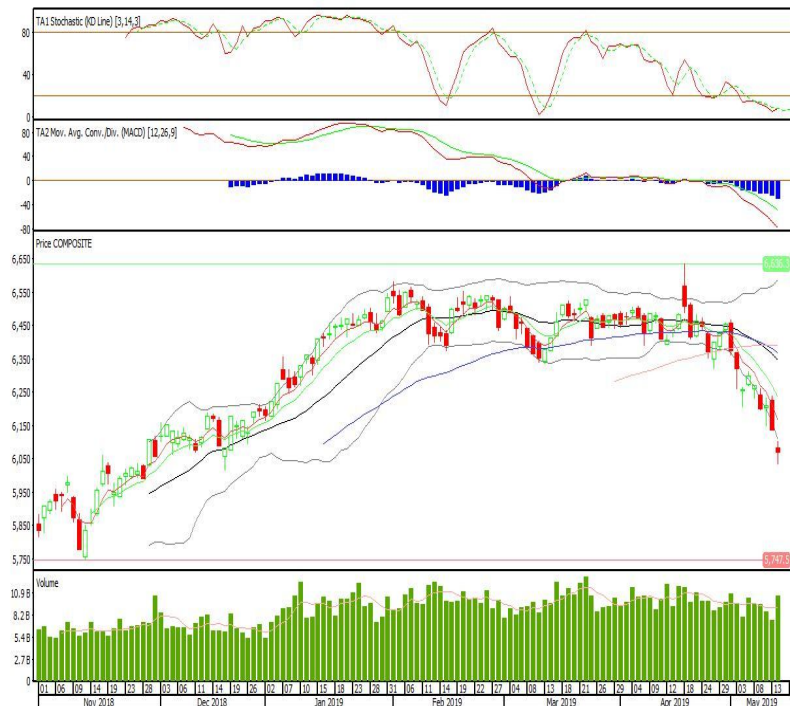
Technical Corner

IHSG

Range: 6.035-6.115

---Indeks ditutup dengan membentuk pola spinning top yang merupakan sinyal indecision dan overshoot lower band, stochastic oversold sedangkan MACD histogram divergence negatif. Target kenaikan indeks pada level 6.115 kemudian 6.160 dengan *support* di level 6.035 dan 5.995.

IHSG (6.071)

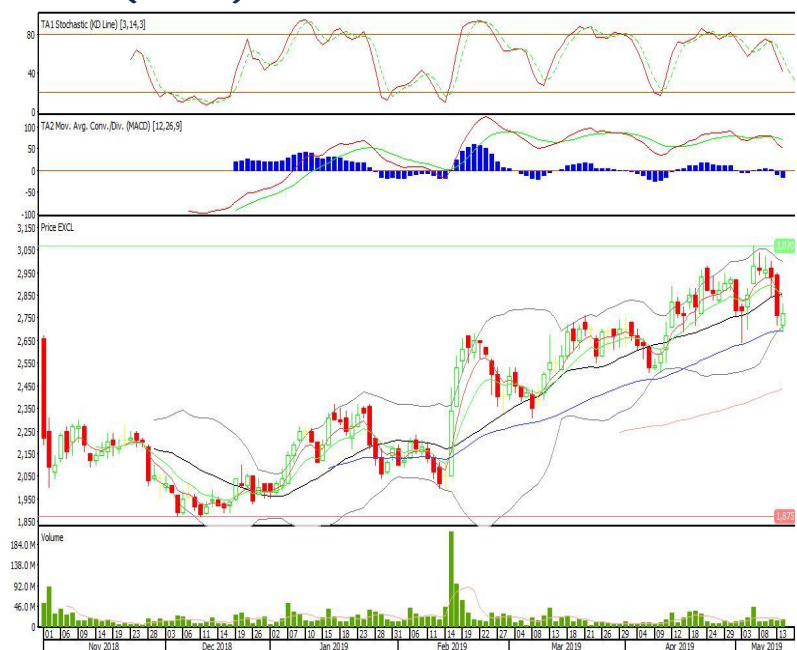


XL Axiata

Rekomendasi: Buy

---Candle ditutup diatas EMA50 dan membentuk pola small bullish candle, stochastic netral dan MACD histogram divergence negatif. Target kenaikan harga pada level 2.820 kemudian 2.870 dengan *support* di level 2.720, *cut loss* jika *break* 2.670.

EXCL (2.770)



Alam Sutera Realty

Rekomendasi: Buy

---Candle ditutup diatas EMA5,10 dan membentuk pola white closing marubozu yang merupakan sinyal bullish continuation, stochastic netral dan MACD histogram convergence negatif. Target kenaikan harga pada level 346 kemudian 364 dengan support di level 310, cut loss jika break 292.

ASRI (328)

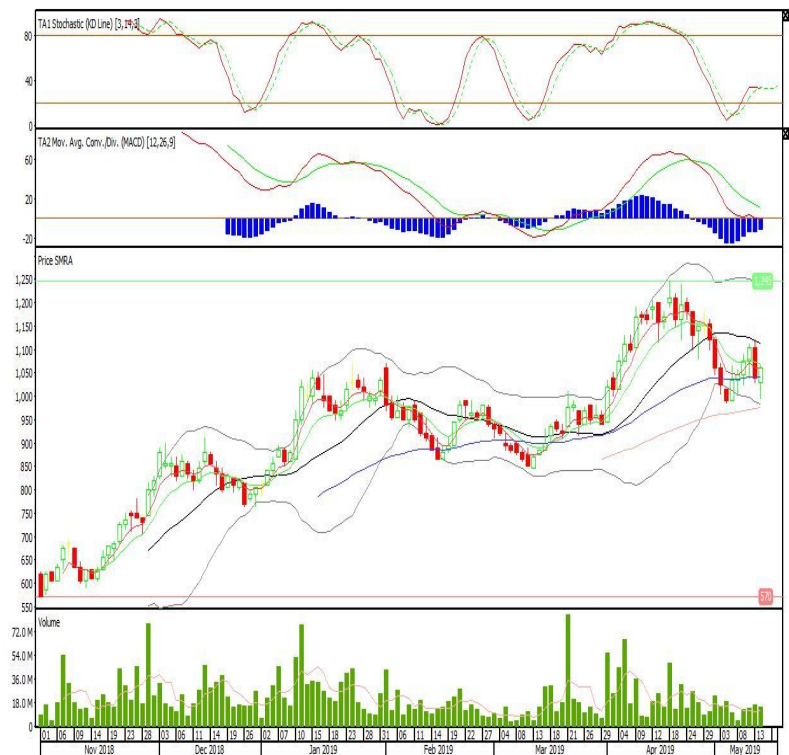


Summarecon Agung

Rekomendasi: Buy

---Candle ditutup diatas EMA50 dan membentuk pola long white marubozu yang merupakan sinyal bullish continuation, stochastic netral dan MACD histogram convergence negatif. Target kenaikan harga pada level 1.090 kemudian 1.120 dengan support di level 1.030, cut loss jika break 1.000.

SMRA (1.060)

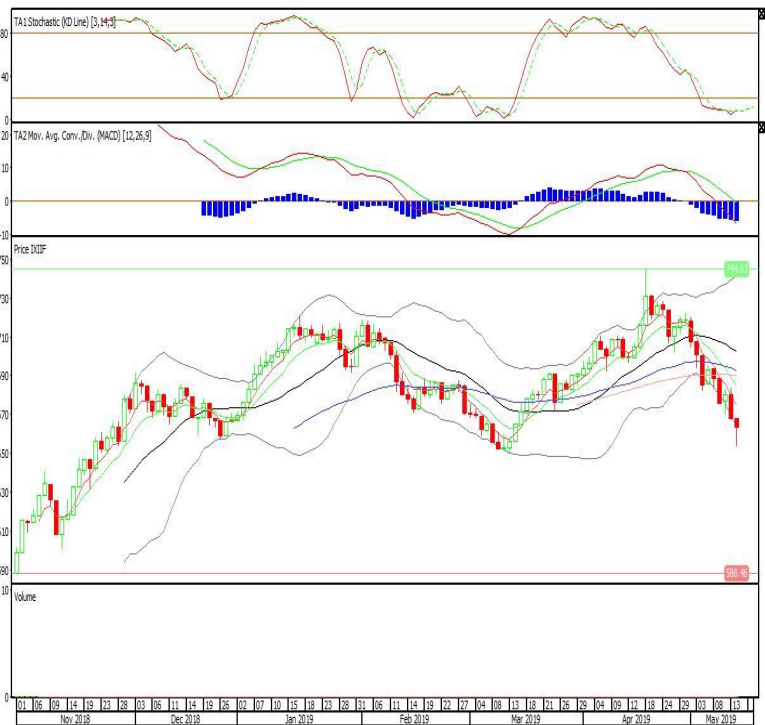


Premier ETF Indonesia Financial

Rekomendasi: SELL

---Candle ditutup dibawah lowerband dengan membentuk pola black opening marubozu yang merupakan sinyal bearish continuation, stochastic oversold, MACD histogram divergence negatif. Target pelemahan harga pada level 658 kemudian 653 dengan *resist* di level 668 dan 672.

XIIF (663)

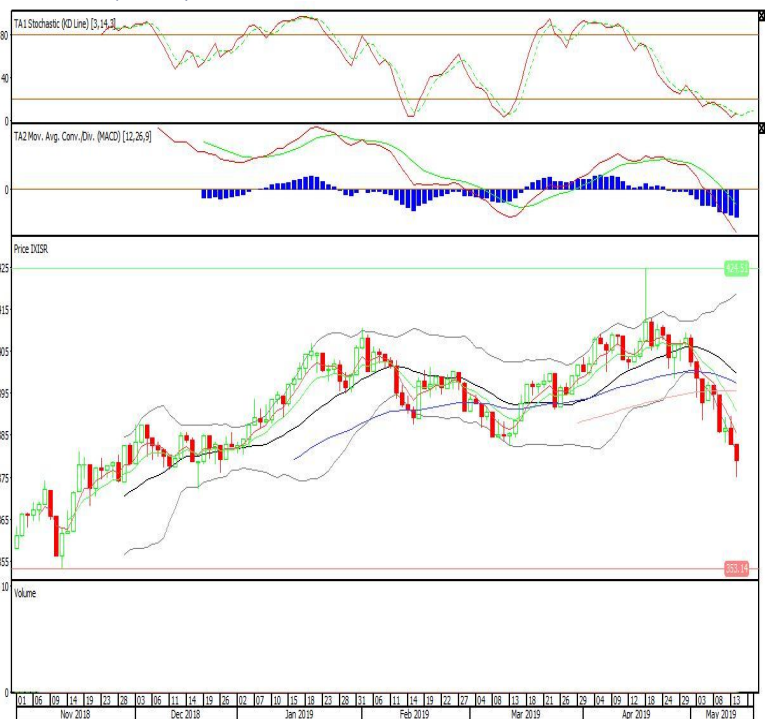


Premier ETF SRI-KEHATI

Rekomendasi: SELL

---Candle ditutup dibawah lowerband dengan membentuk pola black opening marubozu yang merupakan sinyal bearish continuation, stochastic oversold, MACD histogram divergence negatif. Target pelemahan harga pada level 375 kemudian 371 dengan *resist* di level 382 dan 386.

XISR (378)

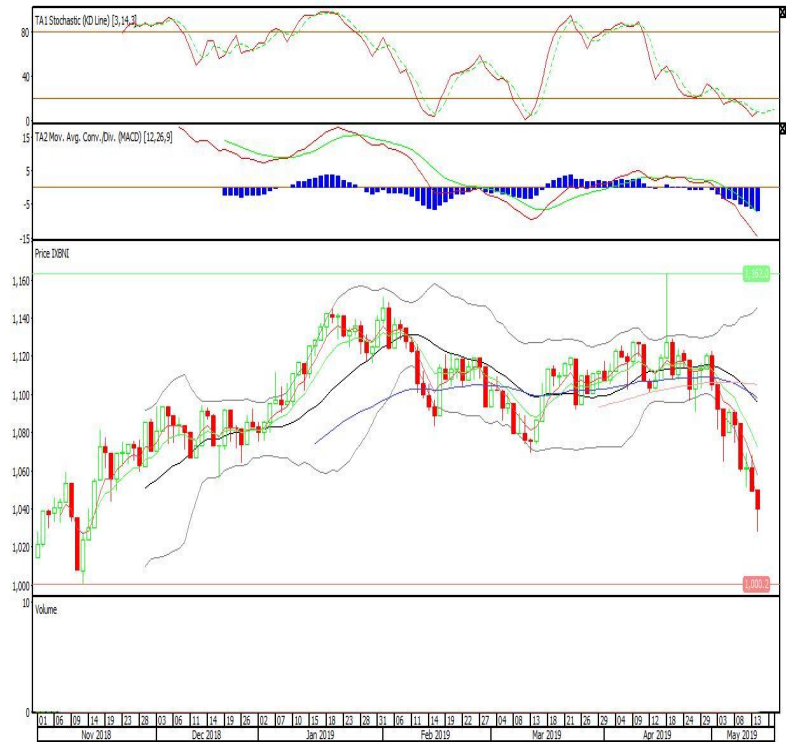


BNI-AM Nusantara ETF MSCI Indonesia

Rekomendasi: SELL

---Candle ditutup dibawah lowerband dengan membentuk pola black opening marubozu yang merupakan sinyal bearish continuation, stochastic oversold, MACD histogram divergence negatif. Target pelemahan harga pada level 1.029 kemudian 1.019 dengan *resist* di level 1.049 dan 1.059.

XBNI (1.039)



Head Office**PT INDO PREMIER SEKURITAS**

Wisma GKBI 7/F Suite 718

Jl. Jend. Sudirman No.28

Jakarta 10210 - Indonesia

p +62.21.5793.1168

f +62.21.5793.1167

ANALYSTS CERTIFICATION.

The views expressed in this research report accurately reflect the analyst's personal views about any and all of the subject securities or issuers; and no part of the research analyst's compensation was, is, or will be, directly or indirectly, related to the specific recommendations or views expressed in the report.

DISCLAIMERS

This research is based on information obtained from sources believed to be reliable, but we do not make any representation or warranty nor accept any responsibility or liability as to its accuracy, completeness or correctness. Opinions expressed are subject to change without notice. This document is prepared for general circulation. Any recommendations contained in this document does not have regard to the specific investment objectives, financial situation and the particular needs of any specific addressee. This document is not and should not be construed as an offer or a solicitation of an offer to purchase or subscribe or sell any securities. PT. Indo Premier Sekuritas or its affiliates may seek or will seek investment banking or other business relationships with the companies in this report.