

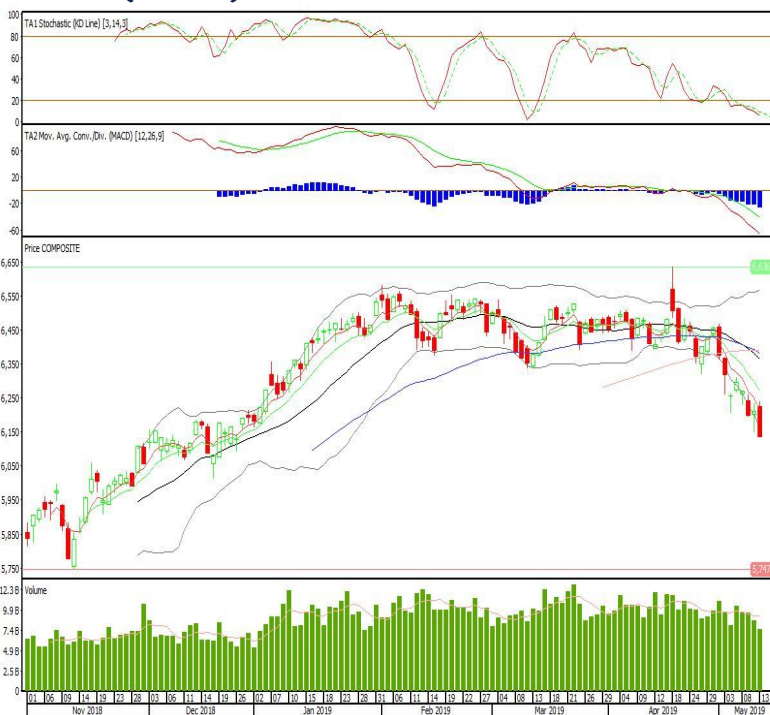
Technical Corner

IHSG

Range: 6.075-6.190

---Indeks ditutup di bawah EMA5,10 dan membentuk pola black closing marubozu yang merupakan sinyal bearish continuation, stochastic oversold dan MACD histogram divergence negatif. Target pelemahan indeks pada level 6.075 kemudian 6.025 dengan *resist* di level 6.190 dan 6250.

IHSG (6.135)



Ace Hardware Indonesia

Rekomendasi: Buy

---Candle ditutup di atas EMA5,10 dan membentuk pola long white maarubozu yang merupakan sinyal bullish continuation, stochastic netral dan MACD histogram divergence positif. Target kenaikan harga pada level 1.650 kemudian 1.670 dengan *support* di level 1.600, *cut loss* jika *break* 1.580.

ACES (1.625)



Telekomunikasi Indonesia

Rekomendasi: Buy on Weakness

---Candle ditutup di bawah EMA5,10 dan membentuk pola long black marubozu yang merupakan sinyal bearish continuation, stochastic netral dan MACD histogram divergence negatif. Target harga beli pada level 3.720 dengan resist di level 3.820 kemudian 3.870.

TLKM (3.770)



Gudang Garam

Rekomendasi: Buy on Weakness

---Candle ditutup dibawah EMA5,10 dan membentuk pola black closing marubozu yang merupakan sinyal bearish continuation, stochastic netral dan MACD histogram convergence positif. Target harga beli pada level 81.200 dengan resist di level 83.000 kemudian 83.900.

GGRM (82.100)

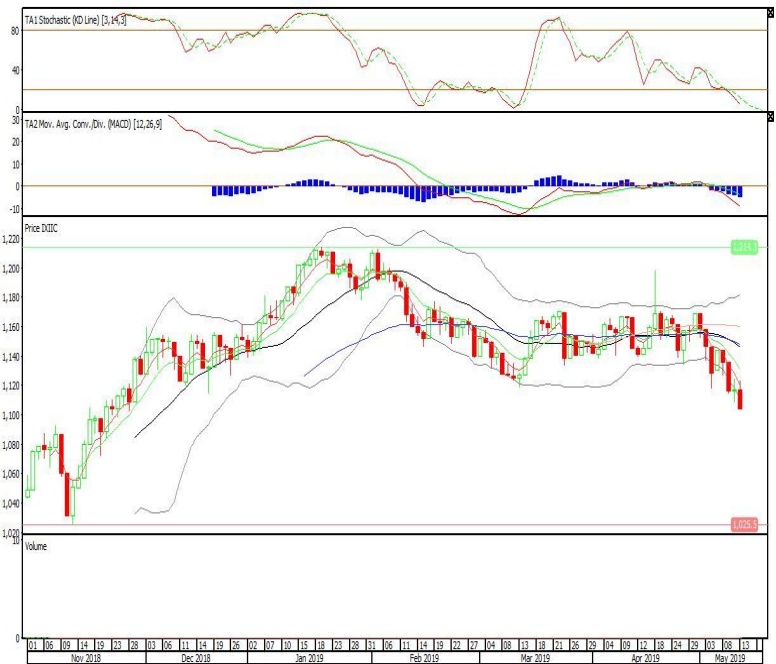


Premier ETF Indonesia Consumer

Rekomendasi: SELL

---Candle ditutup dibawah EMA5,10 dengan membentuk pola black closing marubozu yang merupakan sinyal bearish continuation, stochastic oversold, MACD histogram divergence negatif. Target pelemahan harga pada level 1.091 kemudian 1.078 dengan resist di level 1.116 dan 1.129.

XIIC (1.104)

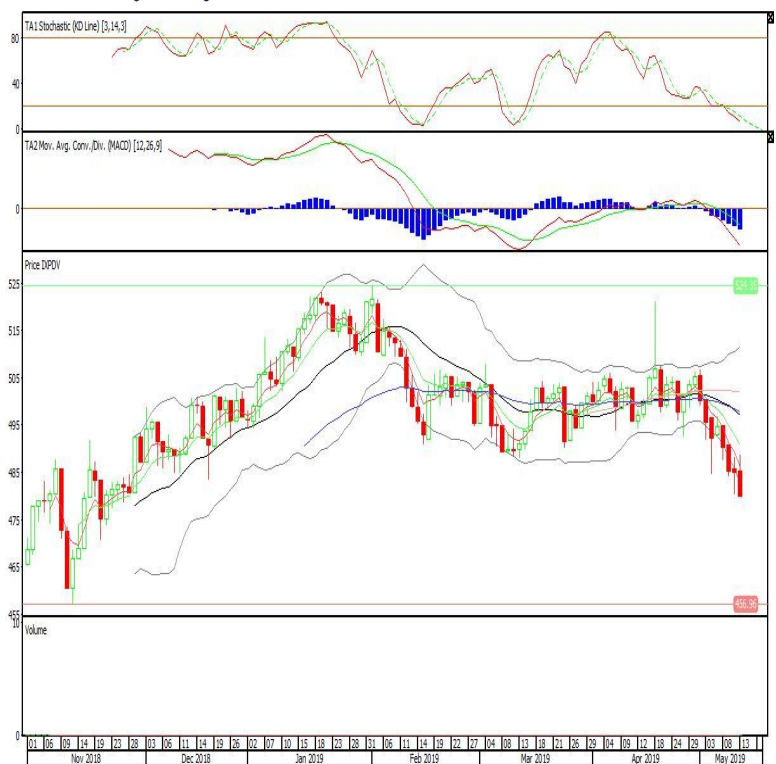


Pinnacle Core High Dividend ETF

Rekomendasi: SELL

---Candle ditutup dibawah EMA5,10 dengan membentuk pola black closing marubozu yang merupakan sinyal bearish continuation, stochastic oversold, MACD histogram divergence negatif. Target pelemahan harga pada level 474 kemudian 469 dengan resist di level 485 dan 490.

XPDV (480)

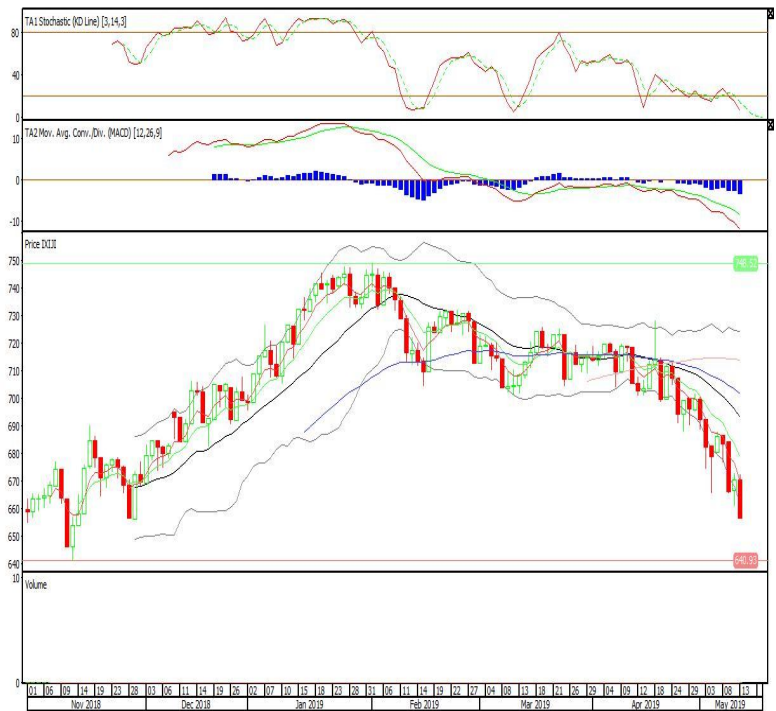


Premier ETF JII

Rekomendasi: SELL

---Candle ditutup dibawah EMA5,10 dengan membentuk pola pola black closing marubozu yang merupakan sinyal bearish continuation, stochastic oversold, MACD histogram divergence negatif. Target pelemahan harga pada level 642 kemudian 628 dengan *resist* di level 670 dan 684.

XIJI (656)



Head Office**PT INDO PREMIER SEKURITAS**

Wisma GKBI 7/F Suite 718

Jl. Jend. Sudirman No.28

Jakarta 10210 - Indonesia

p +62.21.5793.1168

f +62.21.5793.1167

ANALYSTS CERTIFICATION.

The views expressed in this research report accurately reflect the analyst's personal views about any and all of the subject securities or issuers; and no part of the research analyst's compensation was, is, or will be, directly or indirectly, related to the specific recommendations or views expressed in the report.

DISCLAIMERS

This research is based on information obtained from sources believed to be reliable, but we do not make any representation or warranty nor accept any responsibility or liability as to its accuracy, completeness or correctness. Opinions expressed are subject to change without notice. This document is prepared for general circulation. Any recommendations contained in this document does not have regard to the specific investment objectives, financial situation and the particular needs of any specific addressee. This document is not and should not be construed as an offer or a solicitation of an offer to purchase or subscribe or sell any securities. PT. Indo Premier Sekuritas or its affiliates may seek or will seek investment banking or other business relationships with the companies in this report.