

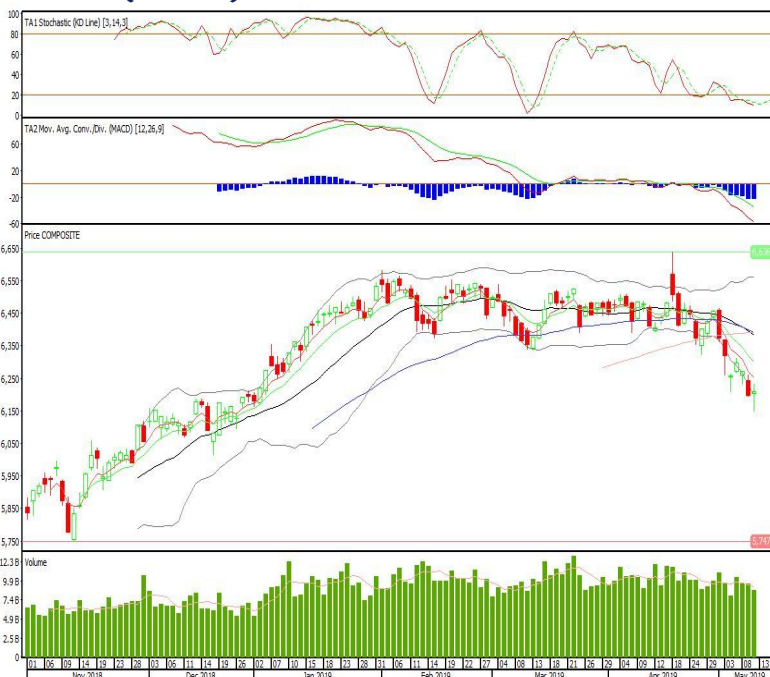
Technical Corner

IHSG

Range: 6.175-6.245

---Indeks ditutup di bawah EMA5,10 dan membentuk pola doji yang merupakan sinyal indecision, stochastic oversold dan MACD histogram divergence negatif. Target pelemahan indeks pada level 6.175 kemudian 6.145 dengan *resist* di level 6.245 dan 6.275.

IHSG (6.209)

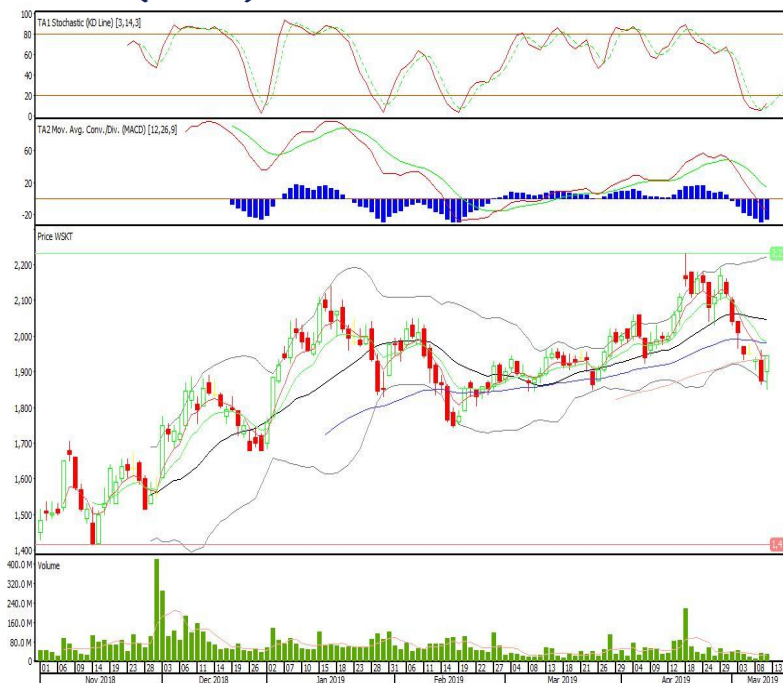


Waskita Karya

Rekomendasi: Buy

---Candle ditutup di atas MA100 dan membentuk pola white closing marubozu yang merupakan sinyal bullish continuation, stochastic oversold dan MACD histogram convergence negatif. Target kenaikan harga pada level 1.990 kemudian 2.020 dengan *support* di level 1.900, *cut loss* jika *break* 1.850.

WSKT (1.075)

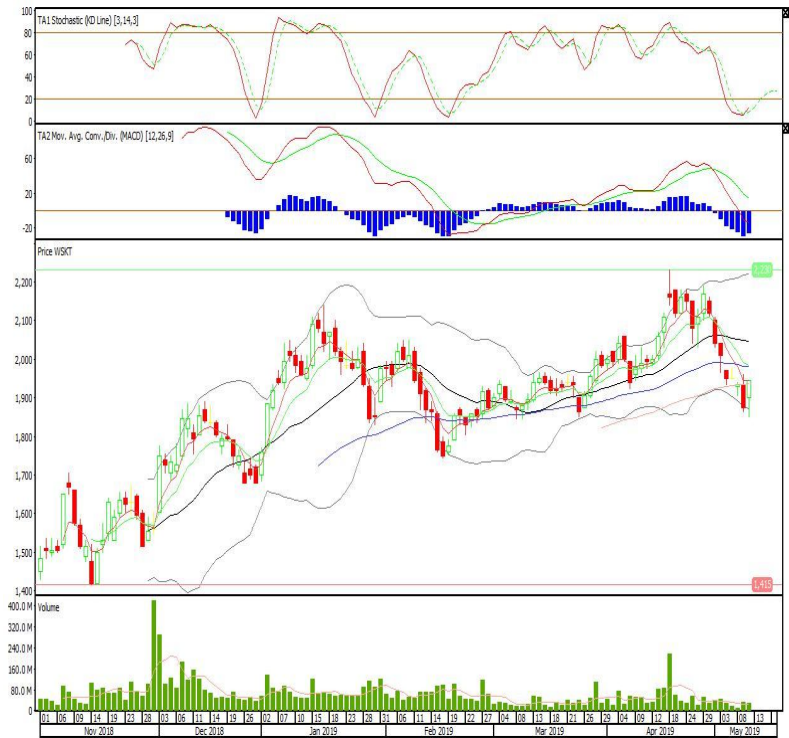


Wijaya Karya

Rekomendasi: Buy

---Candle ditutup di atas EMA50 dan membentuk pola dargonfly doji yang merupakan sinyal bullish reversal, stochastic netral dan MACD histogram divergence negatif. Target kenaikan harga pada level 2.260 kemudian 2.300 dengan *support* di level 2.150, *cut loss* jika *break* 2.100.

WIKA (2.200)

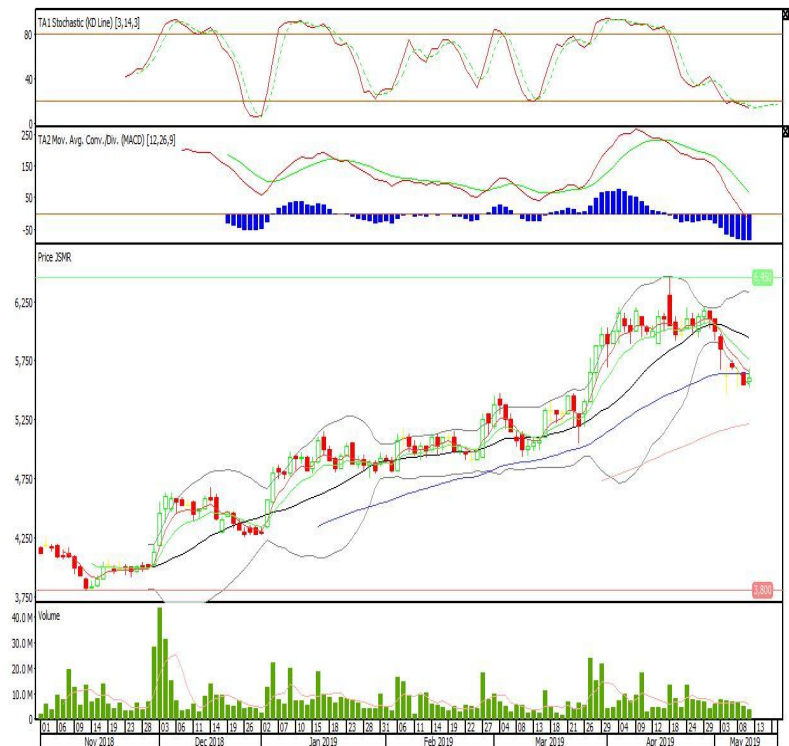


Jasa Marga

Rekomendasi: Buy on Weakness

---Candle ditutup dibawah EMA5,10 dan membentuk pola spinning top yang merupakan sinyal indecision, stochastic oversold dan MACD histogram divergence negatif. Target harga beli pada level 5.475 dengan *resist* di level 5.725 kemudian 5.850.

JSMR (5.600)

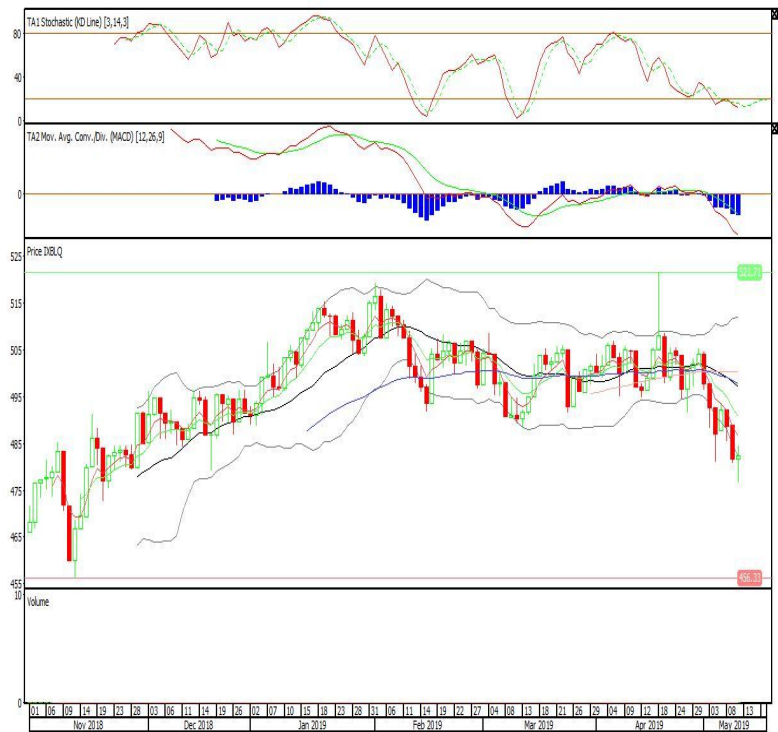


Batavia Smart Liquid ETF

Rekomendasi: Buy on Weakness

---Candle ditutup dibawah EMA5,10 dengan membentuk pola spinning top yang merupakan sinyal indecision, stochastic oversold, MACD histogram divergence negatif. Target harga beli pada level 479 dengan *resist* di level 485 kemudian 488.

XBLO (482)

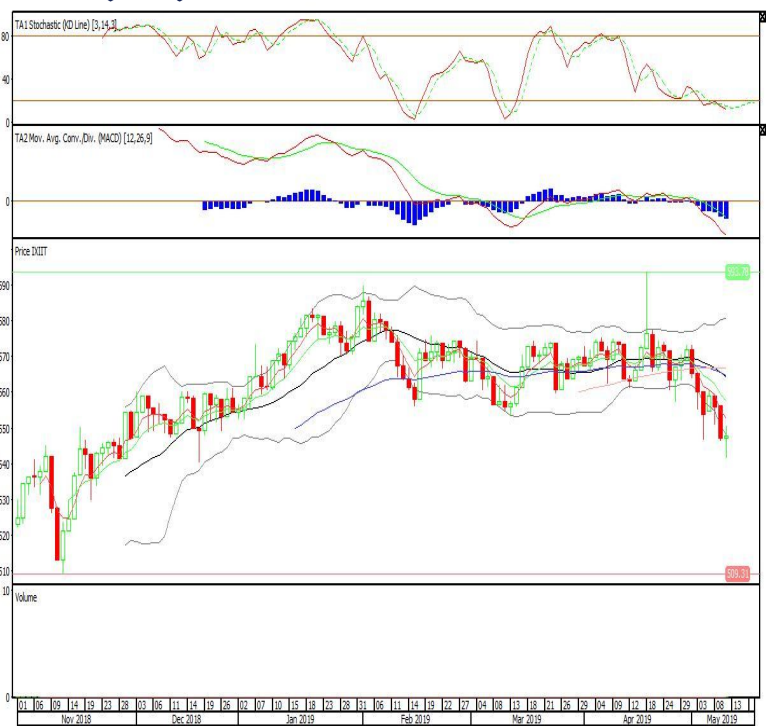


Premier ETF IDX30

Rekomendasi: Buy on Weakness

---Candle ditutup dibawah EMA5,10 dengan membentuk pola spinning top yang merupakan sinyal indecision, stochastic oversold, MACD histogram divergence negatif. Target harga beli pada level 544 dengan *resist* di level 550 kemudian 553.

XIIT (547)

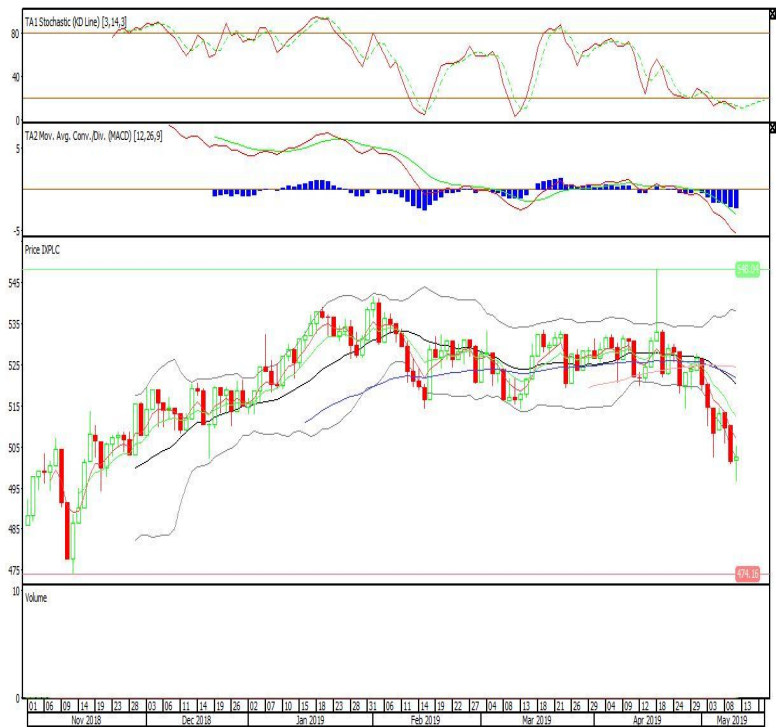


Pinnacle Indonesia Large-Cap ETF

Rekomendasi: Buy on Weakness

---Candle ditutup dibawah EMA5,10 dengan membentuk pola spinning top yang merupakan sinyal indecision, stochastic oversold, MACD histogram divergence negatif. Target harga beli pada level 499 dengan *resist* di level 505 kemudian 508.

XPLC (502)



Head Office**PT INDO PREMIER SEKURITAS**

Wisma GKBI 7/F Suite 718

Jl. Jend. Sudirman No.28

Jakarta 10210 - Indonesia

p +62.21.5793.1168

f +62.21.5793.1167

ANALYSTS CERTIFICATION.

The views expressed in this research report accurately reflect the analyst's personal views about any and all of the subject securities or issuers; and no part of the research analyst's compensation was, is, or will be, directly or indirectly, related to the specific recommendations or views expressed in the report.

DISCLAIMERS

This research is based on information obtained from sources believed to be reliable, but we do not make any representation or warranty nor accept any responsibility or liability as to its accuracy, completeness or correctness. Opinions expressed are subject to change without notice. This document is prepared for general circulation. Any recommendations contained in this document does not have regard to the specific investment objectives, financial situation and the particular needs of any specific addressee. This document is not and should not be construed as an offer or a solicitation of an offer to purchase or subscribe or sell any securities. PT. Indo Premier Sekuritas or its affiliates may seek or will seek investment banking or other business relationships with the companies in this report.