

Technical Corner

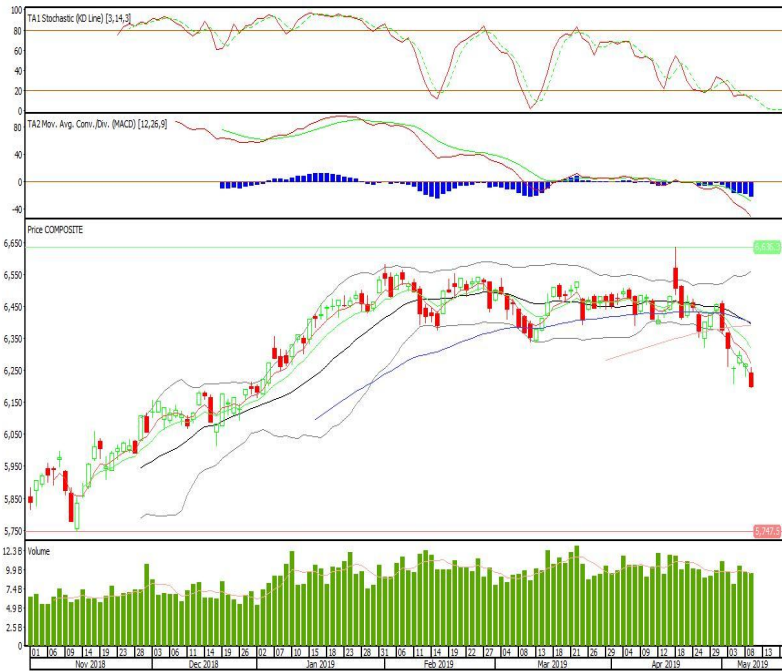
Technical | Indonesia | Daily Research

IHSG

Range: 6.150-6.245

---Indeks kembali ditutup di bawah EMA5,10 dan membentuk pola long black marubozu yang merupakan sinyal bearish continuation, stochastic oversold dan MACD histogram divergence negatif. Target pelemahan indeks pada level 6.150 kemudian 6.110 dengan *resist* di level 6.245 dan 6.295.

IHSG (6.198)

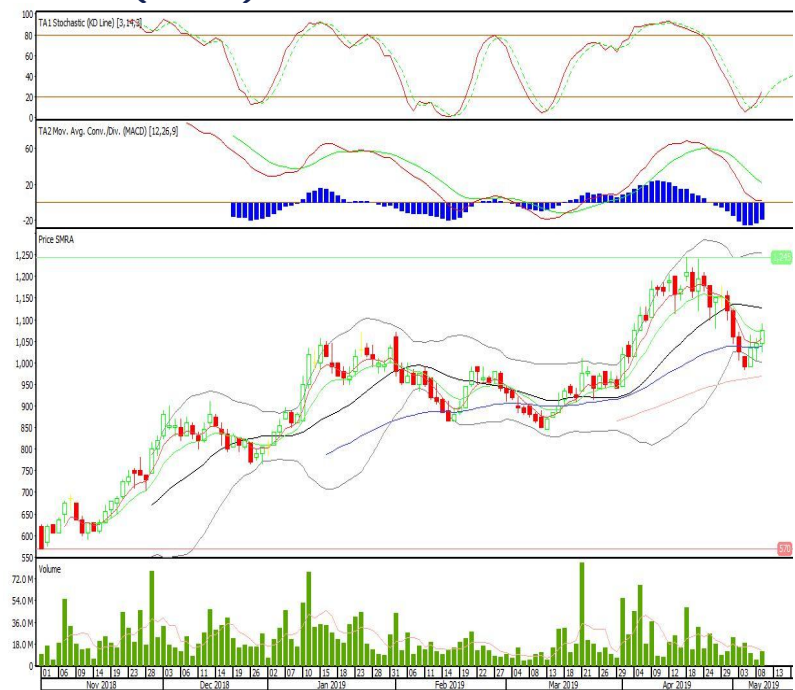


Summarecon Agung

Rekomendasi: Buy

---Candle ditutup di atas EMA5,10 dan membentuk pola long white marubozu yang merupakan sinyal bullish continuation, stochastic netral dan MACD histogram convergence negatif. Target kenaikan harga pada level 1.115 kemudian 1.155 dengan *support* di level 1.045, *cut loss* jika *break* 1.005.

SMRA (1.075)



Surya Semesta Internusa

Rekomendasi: Buy

---Candle ditutup di atas EMA5,10 dan membentuk pola small bullish candle, stochastic golden cross dan MACD histogram convergence negatif. Target kenaikan harga pada level 660 kemudian 675 dengan support di level 635, cut loss jika break 625.

SSIA (650)



H.M. Sampoerna

Rekomendasi: Buy

---Candle ditutup diatas MA20 dan membentuk pola white marubozu yang merupakan sinyal bullish continuation, stochastic netral dan MACD histogram divergence positif. Target kenaikan harga pada level 3.700 kemudian 3.850 dengan support di level 3.400, cut loss jika break 3.250.

HMSP (3.550)

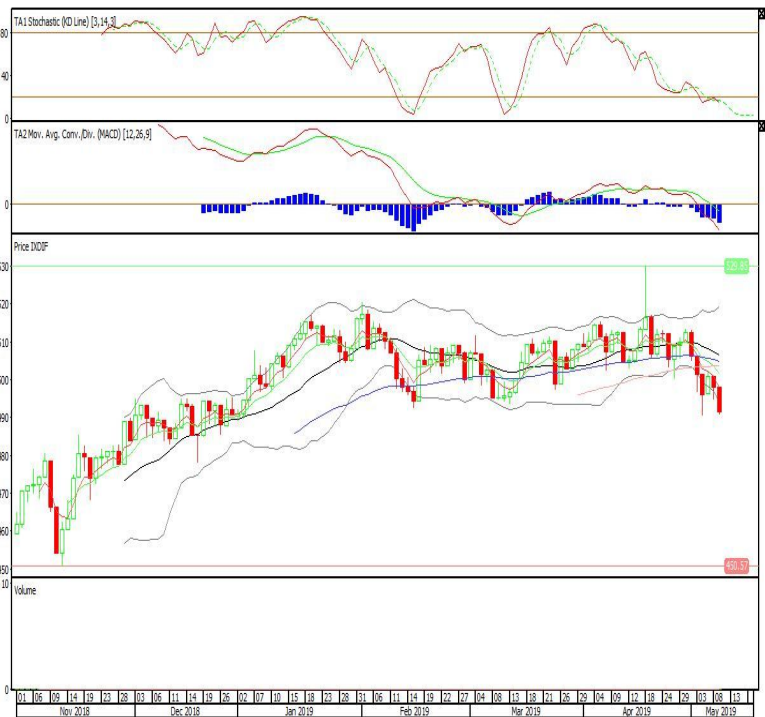


Pinnacle Indonesia ESG ETF

Rekomendasi: SELL

---Candle ditutup dibawah EMA5,10 dengan membentuk pola black opening marubozu yang merupakan sinyal bearish continuation, stochastic oversold, MACD histogram divergence negatif. Target pelemahan harga pada level 484 kemudian 478 dengan resist di level 498 dan 504.

XDIF (491)

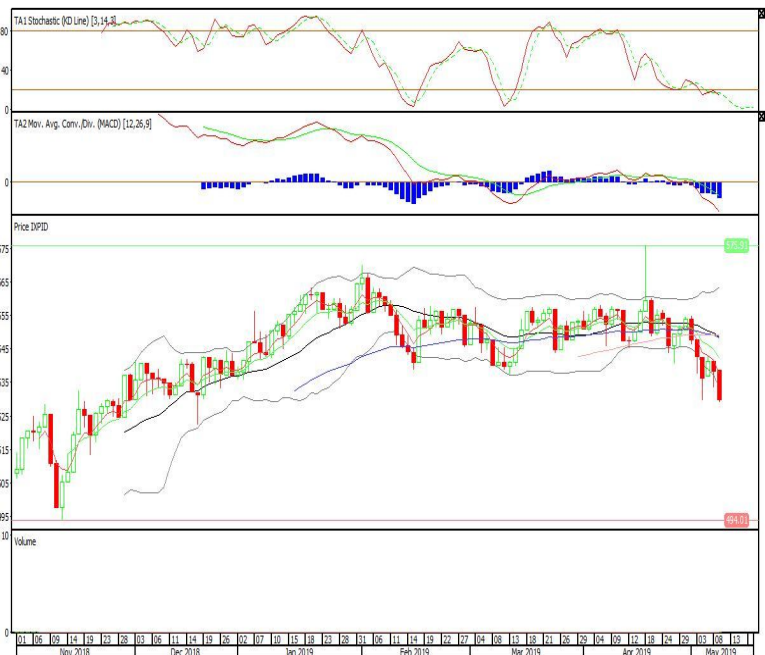


ETF MNC36 Likuid

Rekomendasi: SELL

---Candle ditutup dibawah EMA5,10 dengan membentuk pola black opening marubozu yang merupakan sinyal bearish continuation, stochastic oversold, MACD histogram divergence negatif. Target pelemahan harga pada level 520 kemudian 511 dengan resist di level 538 dan 547.

XPID (529)

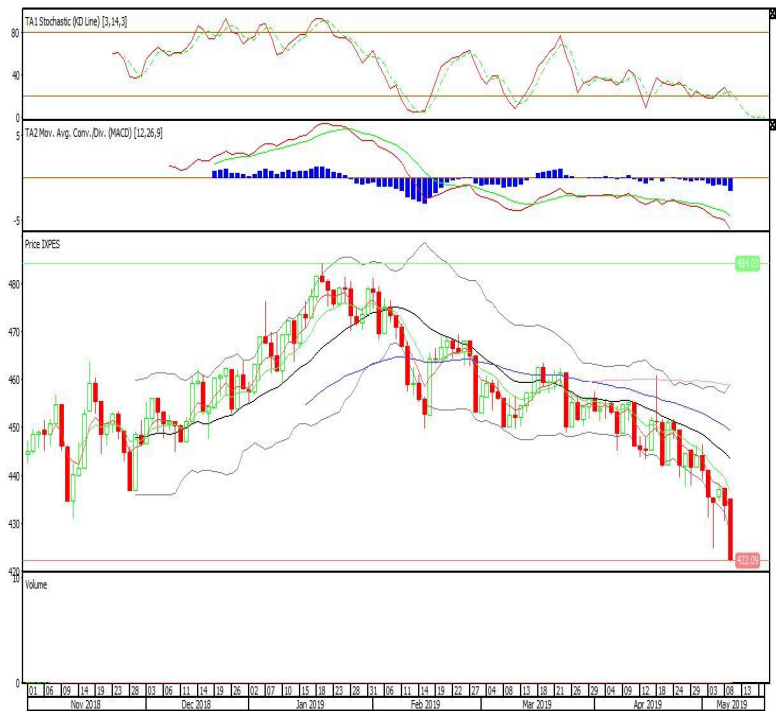


Pinnacle Enhanced Liquid ETF

Rekomendasi: SELL

---Candle ditutup dibawah EMA5,10 dengan membentuk pola black marubozu yang merupakan sinyal bearish continuation, stochastic netral, MACD histogram divergence negatif. Target pelemahan harga pada level 409 kemudian 396 dengan *resist* di level 435 dan 447.

XPES (422)



Head Office**PT INDO PREMIER SEKURITAS**

Wisma GKBI 7/F Suite 718

Jl. Jend. Sudirman No.28

Jakarta 10210 - Indonesia

p +62.21.5793.1168

f +62.21.5793.1167

ANALYSTS CERTIFICATION.

The views expressed in this research report accurately reflect the analyst's personal views about any and all of the subject securities or issuers; and no part of the research analyst's compensation was, is, or will be, directly or indirectly, related to the specific recommendations or views expressed in the report.

DISCLAIMERS

This research is based on information obtained from sources believed to be reliable, but we do not make any representation or warranty nor accept any responsibility or liability as to its accuracy, completeness or correctness. Opinions expressed are subject to change without notice. This document is prepared for general circulation. Any recommendations contained in this document does not have regard to the specific investment objectives, financial situation and the particular needs of any specific addressee. This document is not and should not be construed as an offer or a solicitation of an offer to purchase or subscribe or sell any securities. PT. Indo Premier Sekuritas or its affiliates may seek or will seek investment banking or other business relationships with the companies in this report.