

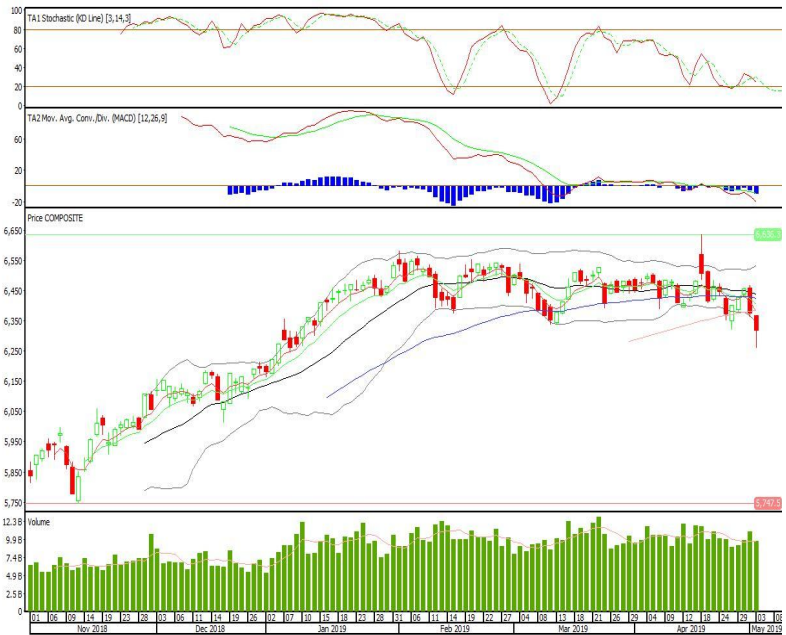
Technical Corner

IHSG

Range: 6.265-6.365

---Indeks ditutup dengan membentuk pola black closing marubozu yang merupakan sinyal bearish continuation, namun overshoot lower band, stochastic netral dan MACD historm divergence negatif. Target kenaikan indeks pada level 6.365 kemudian 6.420 dengan *support* di level 6.265 dan 6.210.

IHSG (6.319)

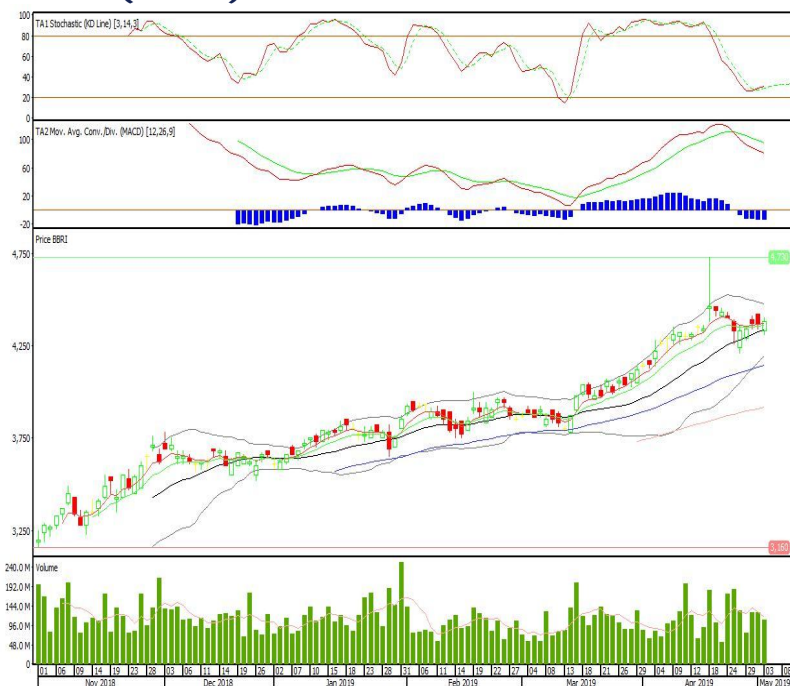


Bank Rakyat Indonesia

Rekomendasi: Buy

---Candle ditutup di atas EMA5,10 dan membentuk pola long white marubozu yang merupakan sinyal bullish continuation, stochastic netral sedangkan MACD histogram divergence negatif. Target kenaikan harga pada level 4.450 kemudian 4.520 dengan *support* di level 4.310, *cut loss* jika *break* 4.260.

BBRI (4.380)

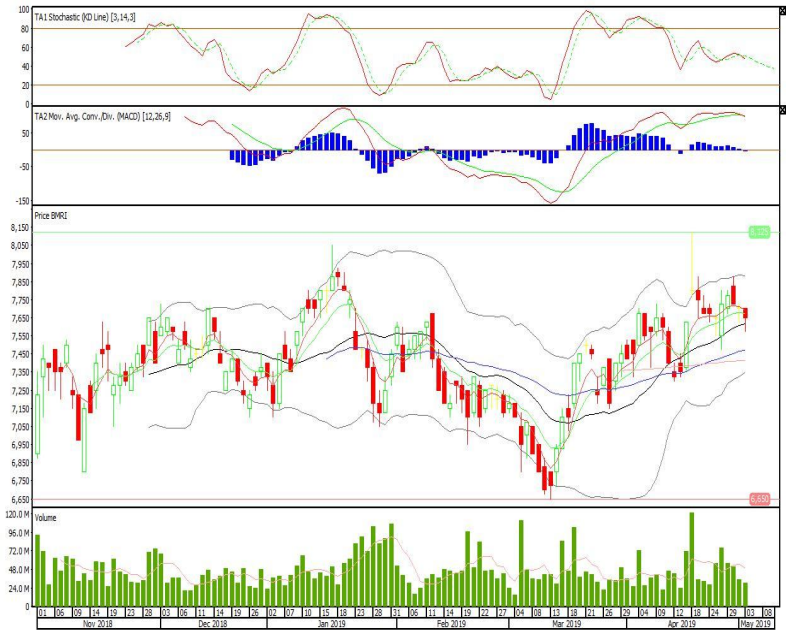


Bank Mandiri

Rekomendasi: Buy on Weakness

---Candle ditutup di bawah EMA5,10 dan membentuk pola black opening marubozu yang merupakan sinyal bearish continuation, stochastic netral dan MACD bearish cross over. Target harga beli pada level 7.575 dengan *resist* di level 7.700 dan 7.750.

BMRI (7.650)



Wijaya Karya Beton

Rekomendasi: Buy on Weakness

---Candle ditutup dibawah EMA5,10 dengan membentuk pola doji yang merupakan sinyal indecision, stochastic oversold, MACD histogram divergence negatif. Target harga beli pada level 560 dengan *resist* di level 590 kemudian 605.

WTON (575)

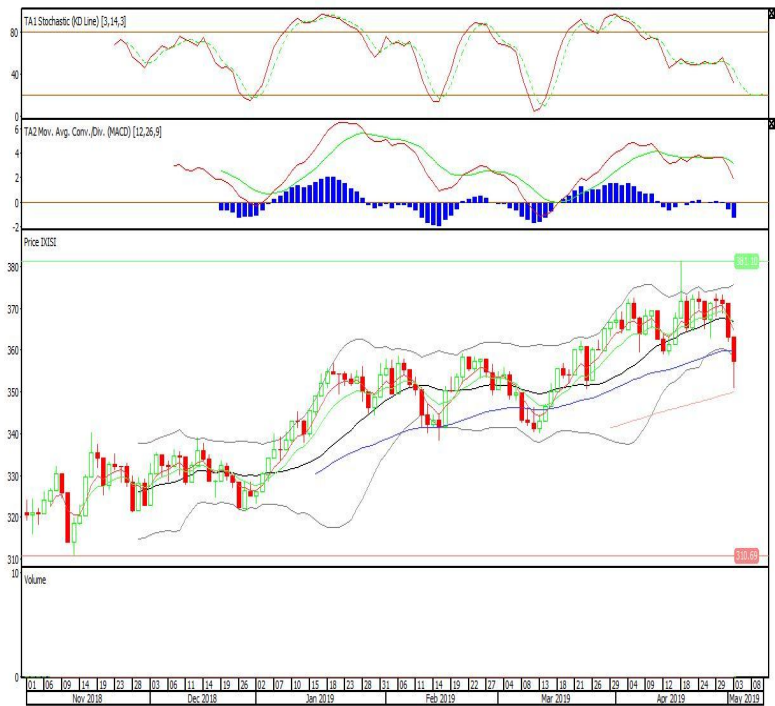


Premier ETF SMinfra18

Rekomendasi: Buy on Weakness

---Candle ditutup dibawah EMA50 dengan membentuk pola black opening marubozu yang merupakan sinyal bearish continuation, stochastic netral, MACD histogram divergence negatif. Target harga beli pada level 351 dengan *resist* di level 363 kemudian 368.

XISI (357)



Premier ETF Indonesia Financial

Rekomendasi: Buy on Weakness

---Candle ditutup dibawah EMA5,10 dengan membentuk pola black opening marubozu yang merupakan sinyal bearish continuation, stochastic netral, MACD histogram divergence negatif. Target harga beli pada level 693 dengan *resist* di level 707 kemudian 714.

XIIF (700)

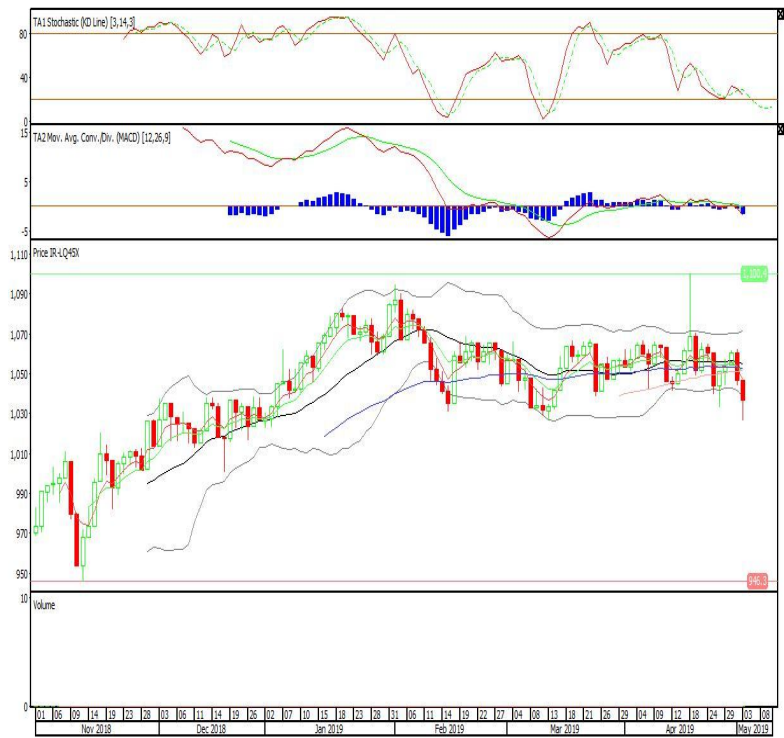


Premier ETF LQ-45

Rekomendasi: Buy on Weakness

---Candle ditutup dibawah EMA5,10 dengan membentuk pola black opening marubozu yang merupakan sinyal bearish continuation, stochastic netral, MACD histogram divergence negatif. Target harga beli pada level 1.026 dengan *resist* di level 1.046 kemudian 1.056.

R-LQ45X (1.036)



Head Office**PT INDO PREMIER SEKURITAS**

Wisma GKBI 7/F Suite 718

Jl. Jend. Sudirman No.28

Jakarta 10210 - Indonesia

p +62.21.5793.1168

f +62.21.5793.1167

ANALYSTS CERTIFICATION.

The views expressed in this research report accurately reflect the analyst's personal views about any and all of the subject securities or issuers; and no part of the research analyst's compensation was, is, or will be, directly or indirectly, related to the specific recommendations or views expressed in the report.

DISCLAIMERS

This research is based on information obtained from sources believed to be reliable, but we do not make any representation or warranty nor accept any responsibility or liability as to its accuracy, completeness or correctness. Opinions expressed are subject to change without notice. This document is prepared for general circulation. Any recommendations contained in this document does not have regard to the specific investment objectives, financial situation and the particular needs of any specific addressee. This document is not and should not be construed as an offer or a solicitation of an offer to purchase or subscribe or sell any securities. PT. Indo Premier Sekuritas or its affiliates may seek or will seek investment banking or other business relationships with the companies in this report.