

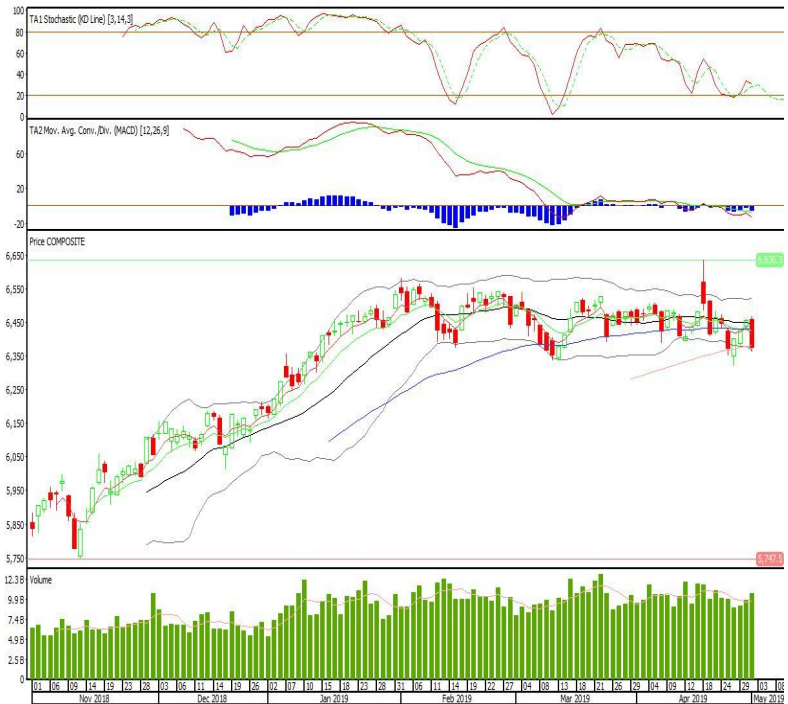
Technical Corner

IHSG

Range: 6.320-6.420

---Indeks ditutup dengan membentuk pola long black marubozu yang merupakan sinyal bearish continuation, stochastic netral sedangkan MACD histogram divergence negatif. Target pelemahan indeks pada level 6.320 kemudian 6.270 dengan *resist* di level 6.420 dan 6.480.

IHSG (6.374)



Telekomunikasi Indonesia

Rekomendasi: Buy

---Candle ditutup dengan membentuk pola white opening marubozu yang merupakan sinyal bullish continuation, stochastic netral dan MACD histogram convergence negatif. Target kenaikan harga pada level 3.900 kemudian 3.970 dengan *support* di level 3.760, *cut loss* jika *break* 3.700.

TLKM (3.830)



Adaro Energy

Rekomendasi: Buy

---Candle ditutup di atas EMA50 dan membentuk pola long white marubozu yang merupakan sinyal bullish continuation, stochastic netral dan MACD histogram divergence positif. Target kenaikan harga pada level 1.365 kemudian 1.380 dengan support di level 1.325, cut loss jika break 1.310.

ADRO (1.345)

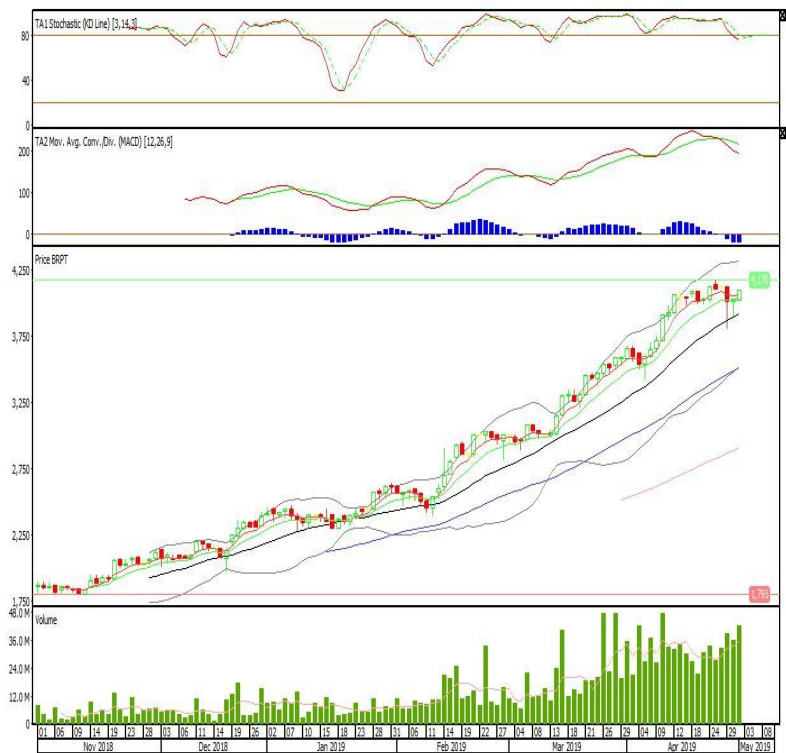


Barito Pacific

Rekomendasi: Buy

---Candle ditutup diatas EMA5,10 dengan membentuk pola white marubozu yang merupakan sinyal bullish continuation, stochastic netral, MACD histogram divergence negatif. Target kenaikan harga pada level 4.180 kemudian 4.260 dengan support di level 4.020, cut loss jika break 3.940.

BRPT (4.100)

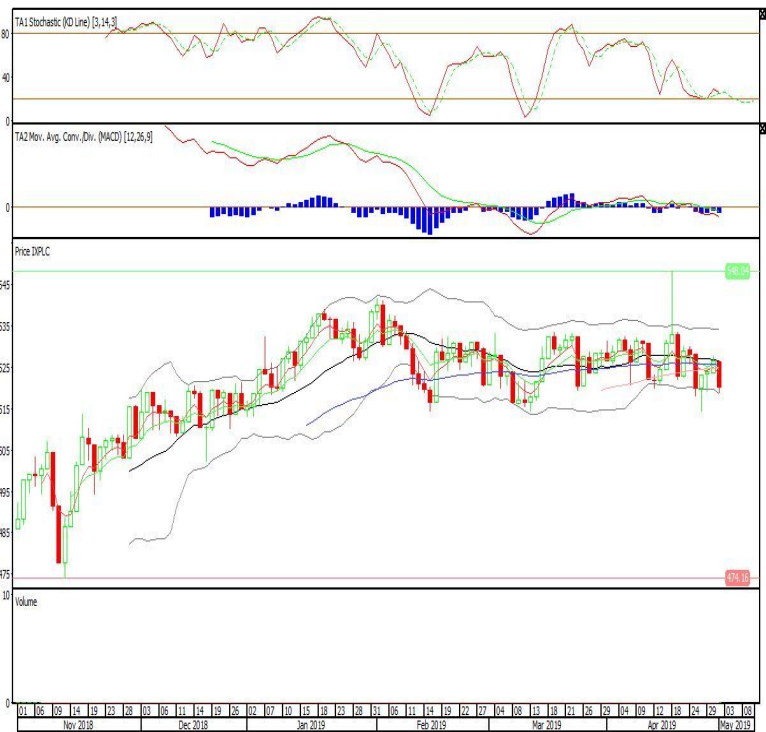


Pinnacle Indonesia Large-Cap ETF

Rekomendasi: SELL

---Candle ditutup dibawah EMA5,10 dengan membentuk pola black opening marubozu yang merupakan sinyal bearish continuation, stochastic netral, MACD histogram divergence negatif. Target pelemahan harga pada level 514 kemudian 507 dengan *resist* di level 526 dan 532.

XPLC (520)

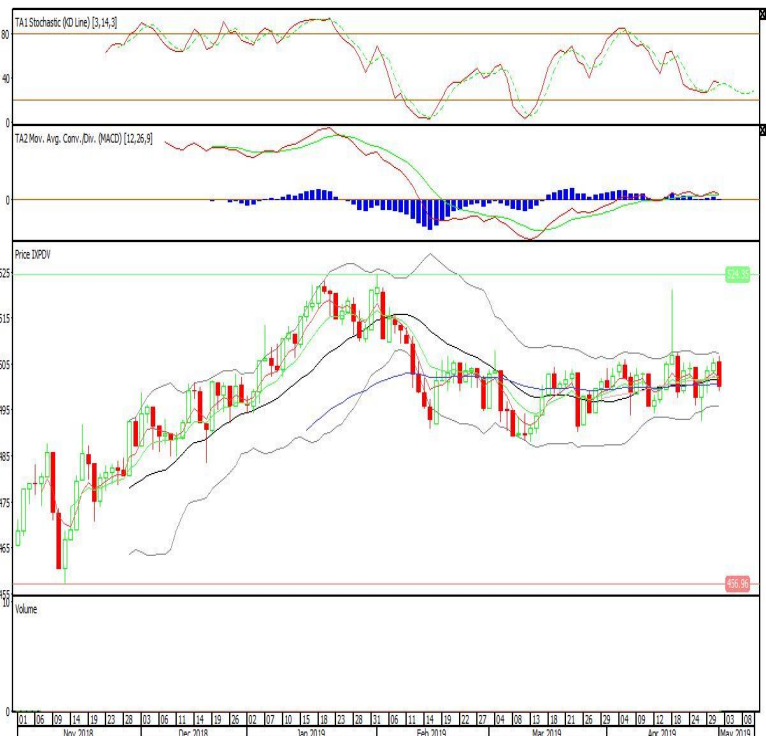


Pinnacle Core High Dividend ETF

Rekomendasi: SELL

---Candle ditutup dibawah EMA50 dengan membentuk pola long black marubozu yang merupakan sinyal bearish continuation, stochastic netral, MACD histogram convergence positif. Target pelemahan harga pada level 494 kemudian 489 dengan *resist* di level 505 dan 510.

XPDV (500)

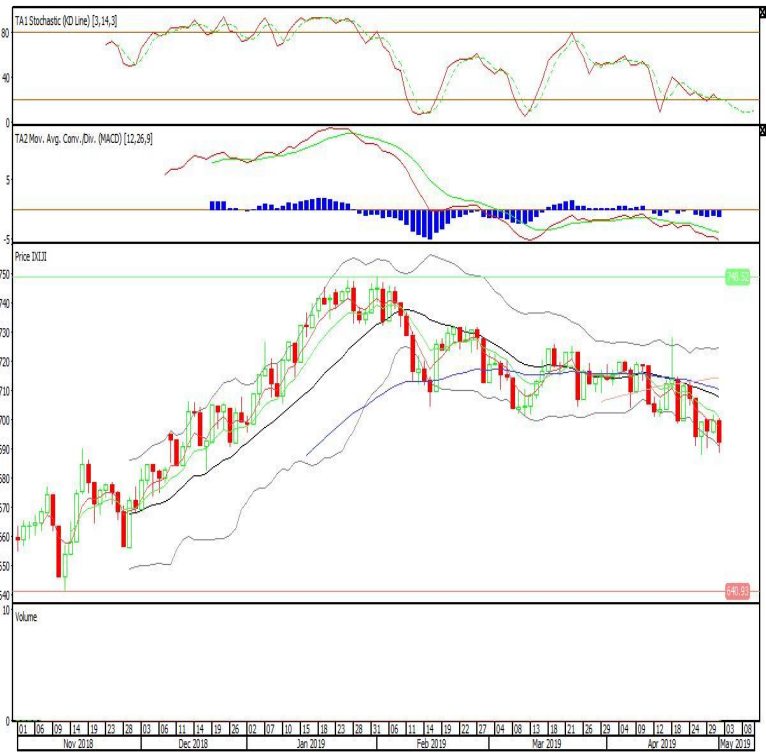


Premier ETF JII

Rekomendasi: SELL

---Candle ditutup dibawah EMA5,10 dengan membentuk pola long black marubozu yang merupakan sinyal bearish continuation, stochastic netral, MACD histogram divergence positif. Target pelemahan harga pada level 684 kemudian 677 dengan resist di level 699 dan 706.

XIJI (692)



Head Office**PT INDO PREMIER SEKURITAS**

Wisma GKBI 7/F Suite 718

Jl. Jend. Sudirman No.28

Jakarta 10210 - Indonesia

p +62.21.5793.1168

f +62.21.5793.1167

ANALYSTS CERTIFICATION.

The views expressed in this research report accurately reflect the analyst's personal views about any and all of the subject securities or issuers; and no part of the research analyst's compensation was, is, or will be, directly or indirectly, related to the specific recommendations or views expressed in the report.

DISCLAIMERS

This research is based on information obtained from sources believed to be reliable, but we do not make any representation or warranty nor accept any responsibility or liability as to its accuracy, completeness or correctness. Opinions expressed are subject to change without notice. This document is prepared for general circulation. Any recommendations contained in this document does not have regard to the specific investment objectives, financial situation and the particular needs of any specific addressee. This document is not and should not be construed as an offer or a solicitation of an offer to purchase or subscribe or sell any securities. PT. Indo Premier Sekuritas or its affiliates may seek or will seek investment banking or other business relationships with the companies in this report.