

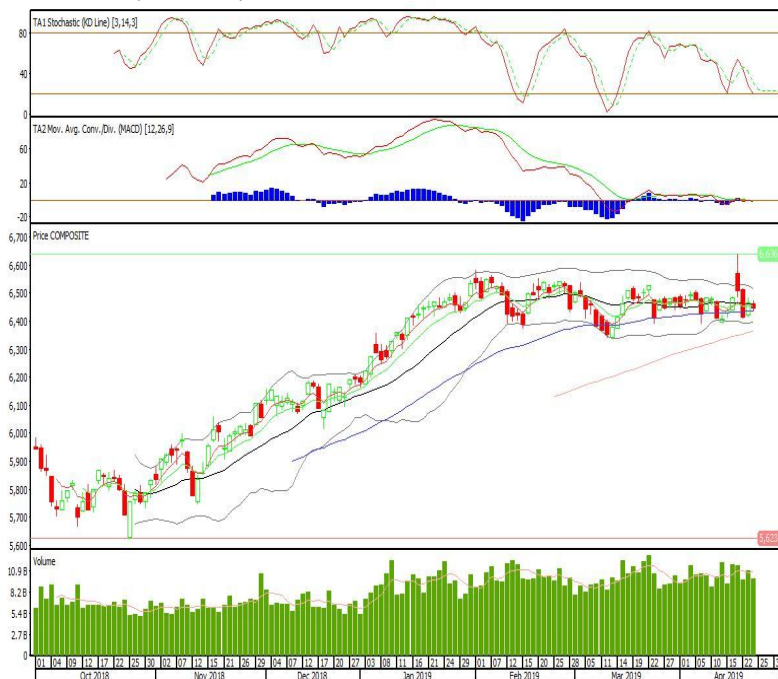
Technical Corner

IHSG

Range: 6.405-6.490

---Indeks ditutup di atas EMA50 dan membentuk pola small bearish candle, stochastic netral dan MACD histogram convergence negatif. Target kenaikan indeks pada level 6.490 kemudian 6.530 dengan *support* di level 6.405 dan 6.365.

IHSG (6.447)



Gudang Garam

Rekomendasi: Buy

---Candle ditutup di atas MA20 dan membentuk pola long white marubozu yang merupakan sinyal bullish continuation, stochastic golden cross sedangkan MACD histogram divergence positif. Target kenaikan harga pada level 85.900 kemudian 90.100 dengan *support* di level 77.500, *cut loss* jika *break* 73.300.

GGRM (81.700)



Bukit Asam

Rekomendasi: Buy

---Candle ditutup di atas EMA50 dan membentuk pola long white marubozu yang merupakan sinyal bullish continuation, stochastic netral dan MACD histogram divergence positif. Target kenaikan harga pada level 4.210 kemudian 4.290 dengan *support* di level 4.050, *cut loss* jika *break* 3.970.

PTBA (4.130)



Kalbe Farma

Rekomendasi: Buy

---Candle ditutup diatas EMA5,10 dengan membentuk pola small bullish candle, stochastic netral, MACD histogram convergence negatif. Target kenaikan harga pada level 1.520 kemudian 1.530 dengan *support* di level 1.500, *cut loss* jika *break* 1.490.

KLBF (1.510)

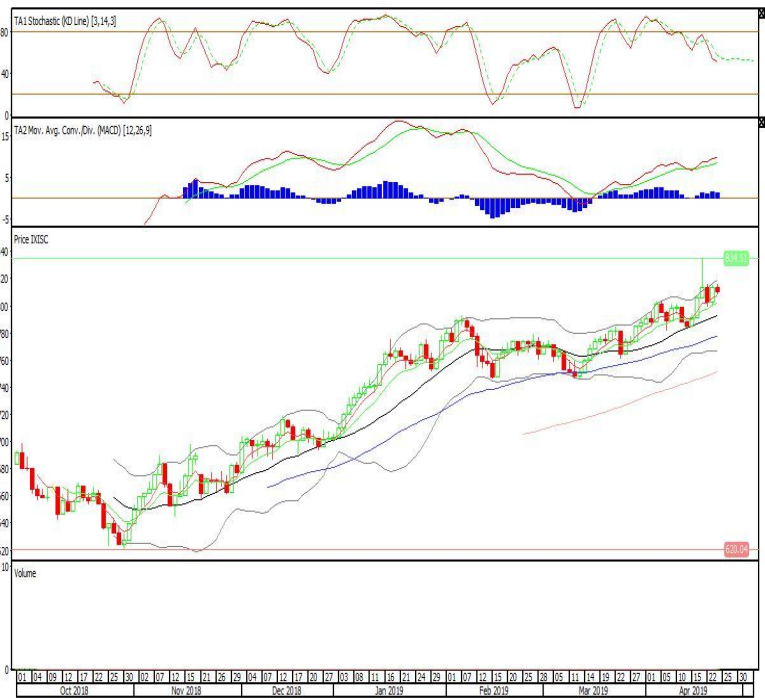


Premier ETF Indonesia Stated-Owned Companies

Rekomendasi: Buy

---Candle ditutup diatas EMA5,10 dengan membentuk pola small bearish candle, stochastic netral, MACD histogram convergence positif. Target kenaikan harga pada level 819 kemudian 826 dengan support di level 804, cut loss jika break 796.

XISC (810)



Premier ETF Indonesia Financial

Rekomendasi: Buy

---Candle ditutup diatas EMA5 dengan membentuk pola small bearish candle, stochastic netral, MACD histogram convergence positif. Target kenaikan harga pada level 731 kemudian 736 dengan support di level 716, cut loss jika break 711.

XIIF (724)

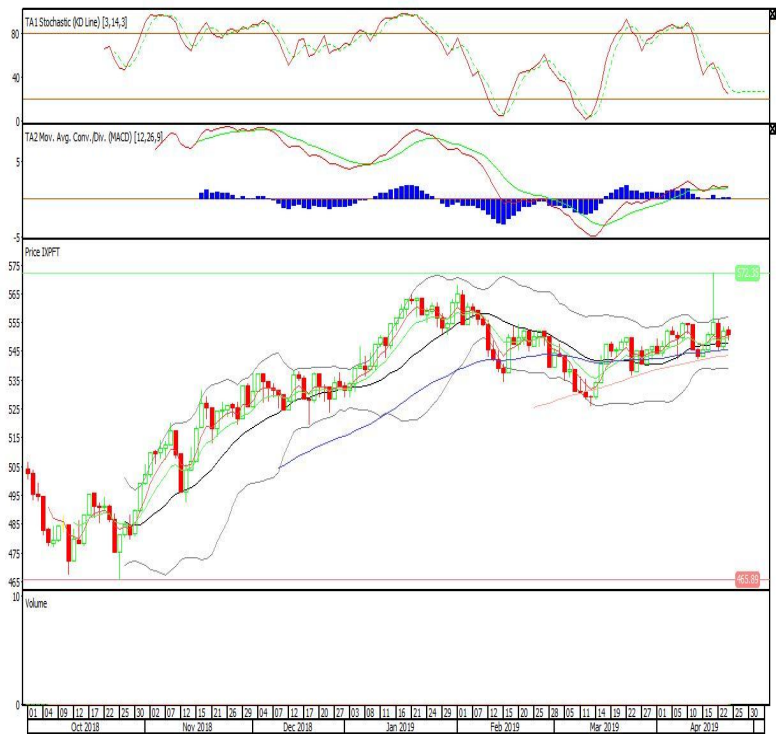


Pinnacle FTSE Indonesia ETF

Rekomendasi: Buy

---Candle ditutup diatas EMA5,10 dengan membentuk pola small bearish candle, stochastic netral, MACD histogram divergence positif. Target kenaikan harga pada level 555 kemudian 558 dengan *support* di level 547, *cut loss* jika *break* 544.

XPFT (550)



Head Office**PT INDO PREMIER SEKURITAS**

Wisma GKBI 7/F Suite 718

Jl. Jend. Sudirman No.28

Jakarta 10210 - Indonesia

p +62.21.5793.1168

f +62.21.5793.1167

ANALYSTS CERTIFICATION.

The views expressed in this research report accurately reflect the analyst's personal views about any and all of the subject securities or issuers; and no part of the research analyst's compensation was, is, or will be, directly or indirectly, related to the specific recommendations or views expressed in the report.

DISCLAIMERS

This research is based on information obtained from sources believed to be reliable, but we do not make any representation or warranty nor accept any responsibility or liability as to its accuracy, completeness or correctness. Opinions expressed are subject to change without notice. This document is prepared for general circulation. Any recommendations contained in this document does not have regard to the specific investment objectives, financial situation and the particular needs of any specific addressee. This document is not and should not be construed as an offer or a solicitation of an offer to purchase or subscribe or sell any securities. PT. Indo Premier Sekuritas or its affiliates may seek or will seek investment banking or other business relationships with the companies in this report.