

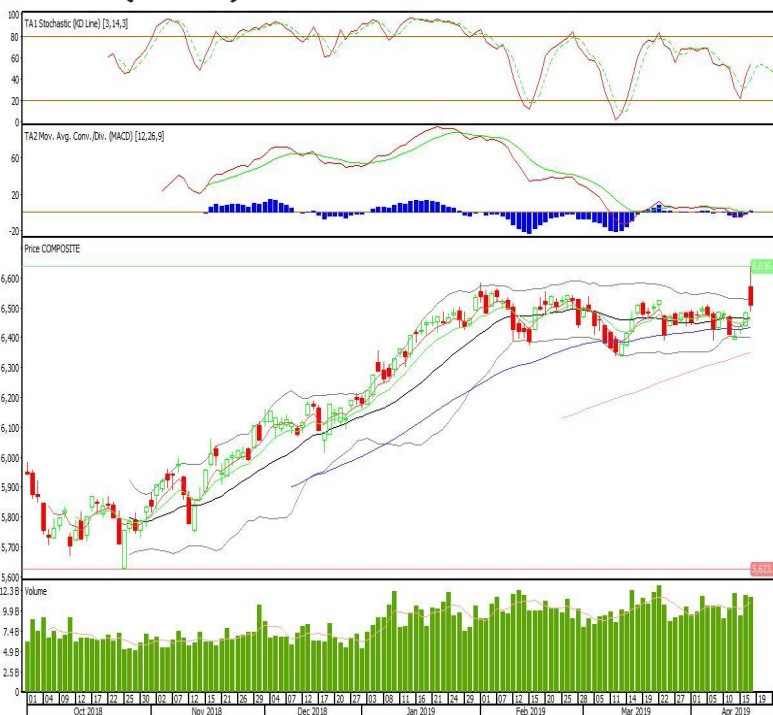
Technical Corner

IHSG

Range: 6.450-6.560

---Indeks ditutup membentuk pola long black marubozu dengan mengisi gap yang terbentuk pada pembukaan perdagangan, stochastic netral dan MACD bullish cross over zero line. Target kenaikan indeks pada level 6.560 kemudian 6.610 dengan *support* di level 6.450 dan 6.400.

IHSG (6.507)

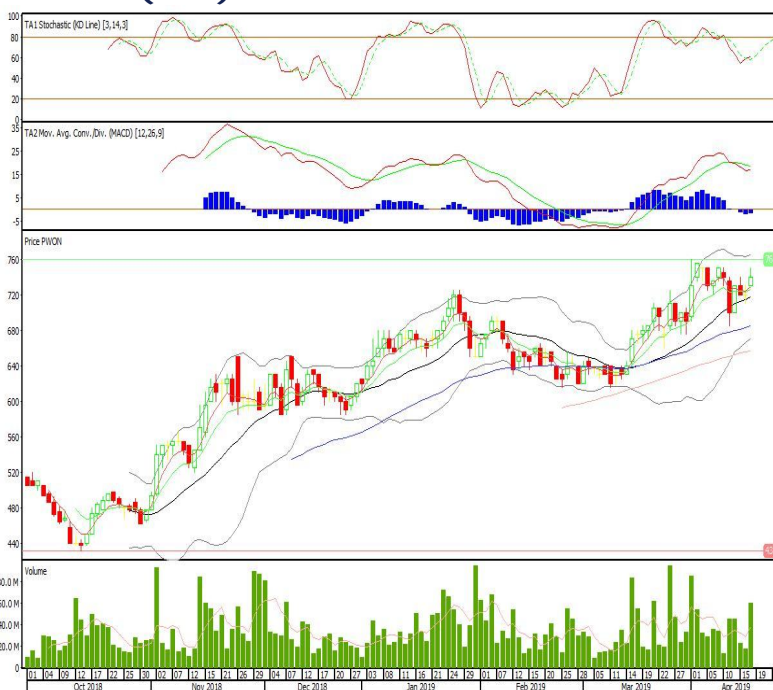


Pakuwon Jati

Rekomendasi: Buy

---Candle ditutup di atas EMA5,10 dan membentuk pola white opening marubozu yang merupakan sinyal bullish continuation, stochastic netral dan MACD histogram convergence negatif. Target kenaikan harga pada level 755 kemudian 770 dengan *support* di level 725, *cut los* jika *break* 715.

PWON (740)



Timah

Rekomendasi: Buy

---Candle ditutup di atas EMA5,10 dan membentuk pola spinning top yang merupakan sinyal indecision, stochastic golden cross dan MACD histogram convergence positif. Target kenaikan harga pada level 1.405 kemudian 1.445 dengan support di level 1.325, cut loss jika break 1.290.

TINS (1.365)



PP Properti

Rekomendasi: Buy

---Candle ditutup diatas MA20 dengan membentuk pola white opening marubozu yang merupakan sinyal bullish continuation, stochastic netral, MACD histogram divergence positif. Target kenaikan harga pada level 157 kemudian 163 dengan support di level 145, cut loss jika break 139.

PPRO (151)

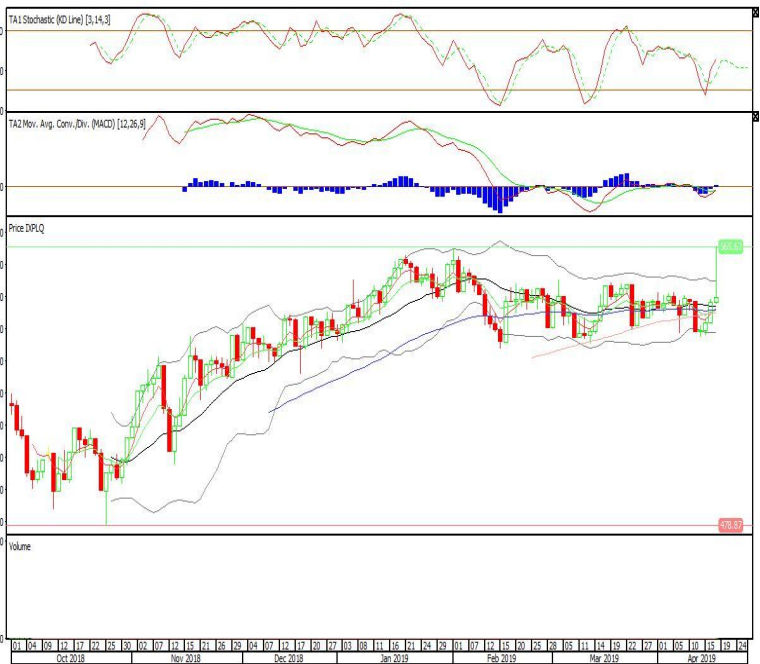


Pinnacle Enhanced Liquid ETF

Rekomendasi: Buy

---Candle ditutup bertahan diatas EMA5,10 dengan membentuk pola small bullish candle, stochastic netral, MACD histogram divergence positif. Target kenaikan harga pada level 552 kemudian 555 dengan *support* di level 546, *cut loss* jika *break* 543.

XPLQ (549)

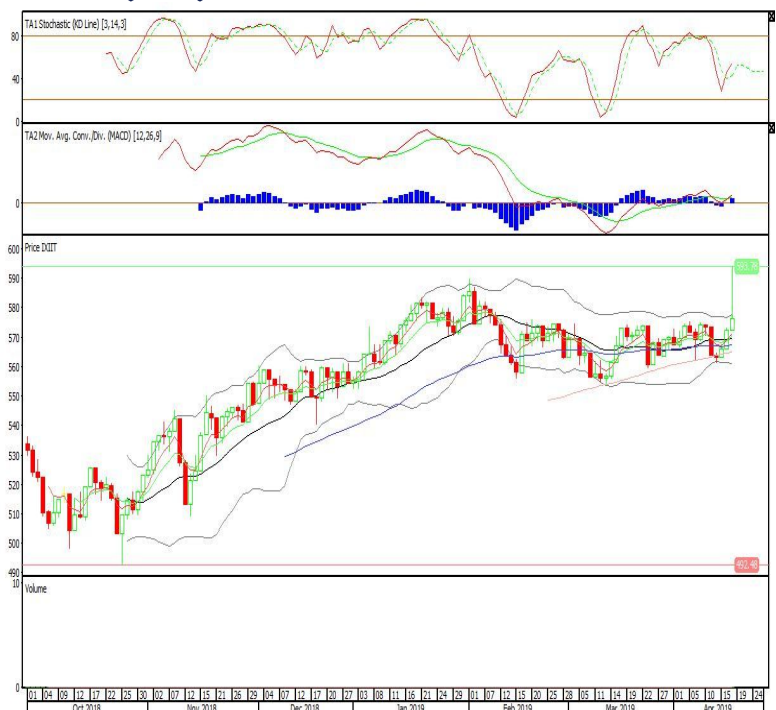


Premier ETF IDX30

Rekomendasi: Buy

---Candle ditutup bertahan diatas EMA5,10 dengan membentuk pola wait opening, stochastic netral, MACD histogram divergence positif. Target kenaikan harga pada level 580 kemudian 584 dengan *support* di level 572, *cut loss* jika *break* 568.

XIIT (576)

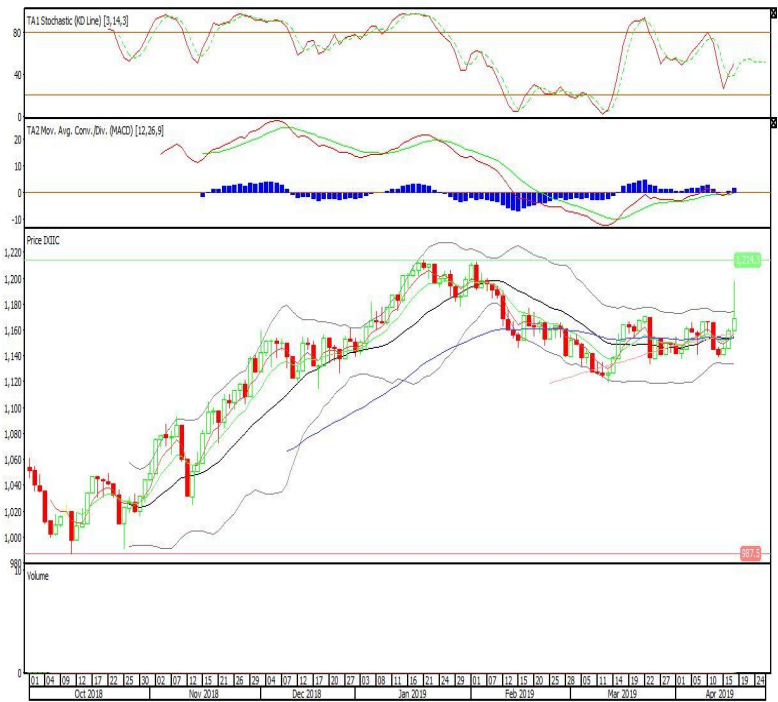


Premier ETF Indonesia Consumer

Rekomendasi: Buy

---Candle ditutup bertahan diatas EMA5,10 dengan membentuk pola wait opening, stochastic netral, MACD histogram divergence positif. Target kenaikan harga pada level 1.177 kemudian 1.187 dengan support di level 1.158, cut loss jika break 1.148.

XIIC (1.169)



Head Office**PT INDO PREMIER SEKURITAS**

Wisma GKBI 7/F Suite 718

Jl. Jend. Sudirman No.28

Jakarta 10210 - Indonesia

p +62.21.5793.1168

f +62.21.5793.1167

ANALYSTS CERTIFICATION.

The views expressed in this research report accurately reflect the analyst's personal views about any and all of the subject securities or issuers; and no part of the research analyst's compensation was, is, or will be, directly or indirectly, related to the specific recommendations or views expressed in the report.

DISCLAIMERS

This research is based on information obtained from sources believed to be reliable, but we do not make any representation or warranty nor accept any responsibility or liability as to its accuracy, completeness or correctness. Opinions expressed are subject to change without notice. This document is prepared for general circulation. Any recommendations contained in this document does not have regard to the specific investment objectives, financial situation and the particular needs of any specific addressee. This document is not and should not be construed as an offer or a solicitation of an offer to purchase or subscribe or sell any securities. PT. Indo Premier Sekuritas or its affiliates may seek or will seek investment banking or other business relationships with the companies in this report.