

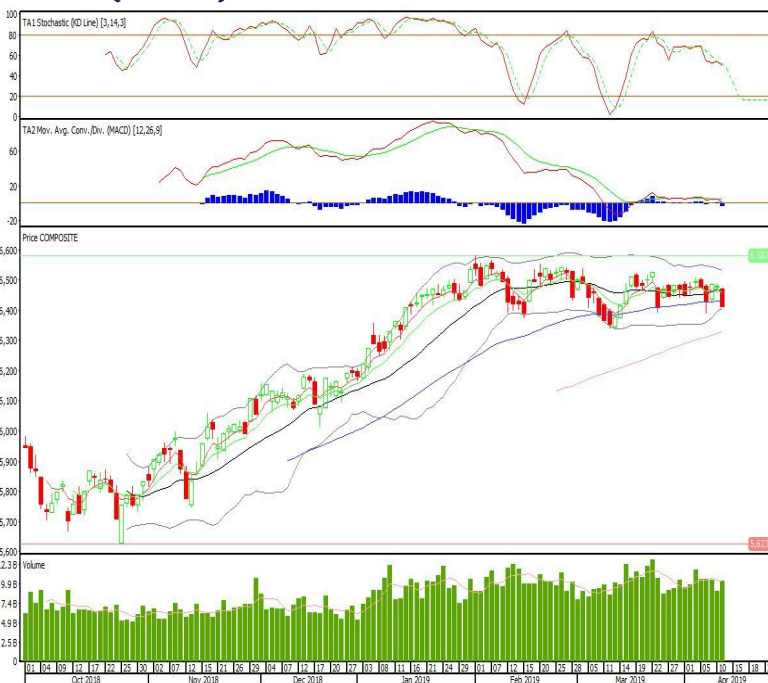
## Technical Corner

### IHSG

**Range: 6.355-6.460**

---Indeks ditutup di bawah EMA50 dan membentuk pola *black marubozu* yang merupakan sinyal *bearish continuation*, *stochastic* netral dan *MACD* histogram *divergence* negatif. Target pelemahan indeks pada level 6.355 kemudian 6.315 dengan *resist* di level 6.460 kemudian 6.520.

### IHSG (6.410)



### Indo Tambangraya Megah

**Rekomendasi: Buy**

---Candle ditutup dengan membentuk pola *long white marubozu* yang merupakan sinyal *bullish continuation*, *stochastic* *golden cross* dan *MACD* histogram *convergence* negatif. Target kenaikan harga pada level 20.350 kemudian 20.675 dengan *support* di level 19.625, *cut loss* jika *break* 19.325.

### ITMG (20.000)



**XL Axiata**

**Rekomendasi: Buy**

---Candle ditutup di atas MA20 dan membentuk pola three white soldier yang merupakan sinyal bullish reversal, stochastic netral dan MACD histogram convergence negatif. Target kenaikan harga pada level 2.725 kemudian 2.800 dengan support di level 2.600, cut loss 2.550.

**EXCL (2.670)**



**Vale Indonesia**

**Rekomendasi: Buy**

---Candle ditutup diatas EMA5 dan membentuk pola long white marubozu yang merupakan sinyal bullish continuation, stochastic golden cross dan MACD histogram convergence negatif. Target kenaikan harga pada level 3.470 kemudian 3.570 dengan support di level 3.270, cut loss jika break 3.170.

**INCO (3.370)**

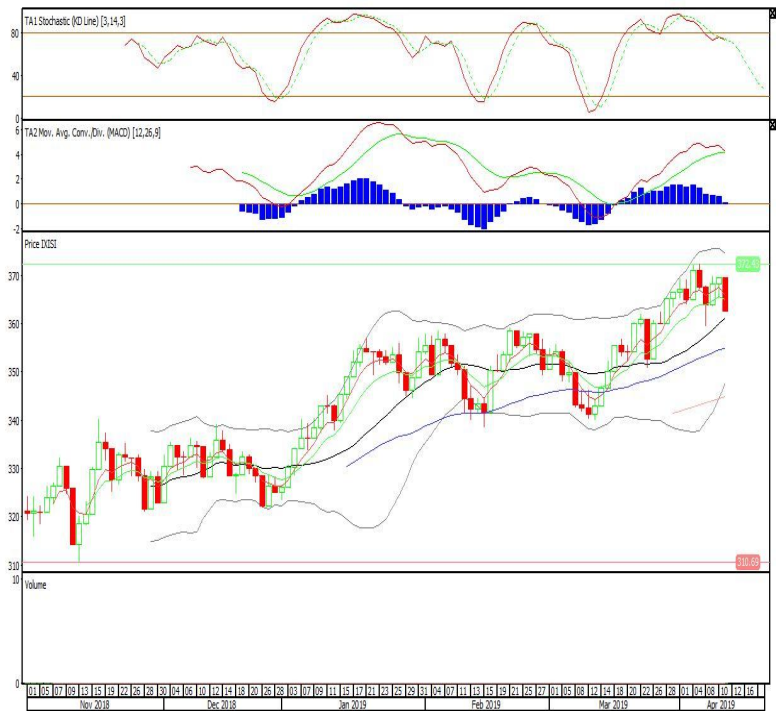


Premier ETF SMinfra18

**Rekomendasi: SELL**

---Candle ditutup dibawah EMA5,10 dengan membentuk pola black marubozu yang merupakan sinyal bearish continuation, stochastic netral, MACD histogram convergence positif. Target pelemahan harga pada level 355 kemudian 348 dengan resist di level 369 dan 376.

**XISI (362)**

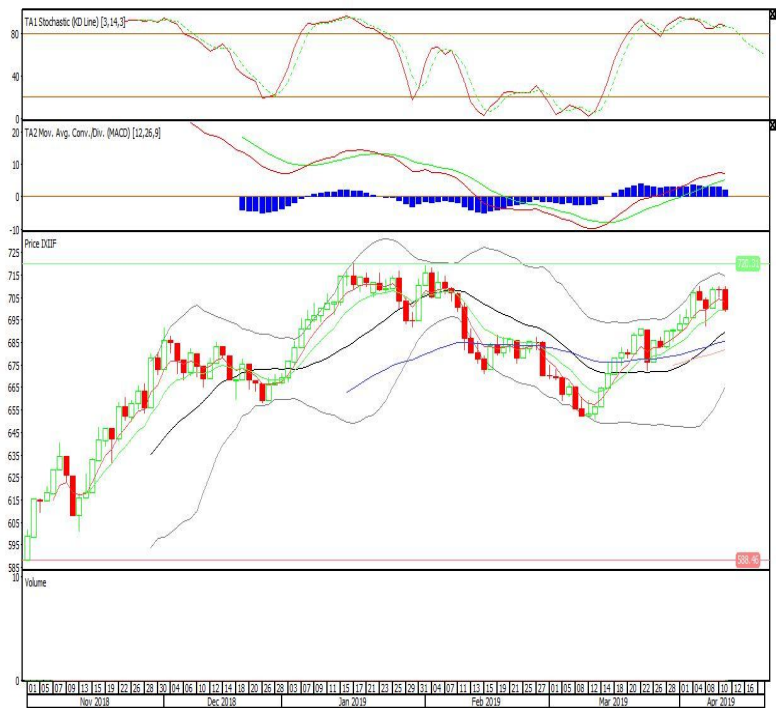


Premier ETF Indonesia Financial

**Rekomendasi: SELL**

---Candle ditutup dibawah EMA5 dengan membentuk pola long black marubozu yang merupakan sinyal bearish continuation, stochastic overbought, MACD histogram convergence positif. Target pelemahan harga pada level 690 kemudian 681 dengan resist di level 708 dan 717.

**XIIF (699)**

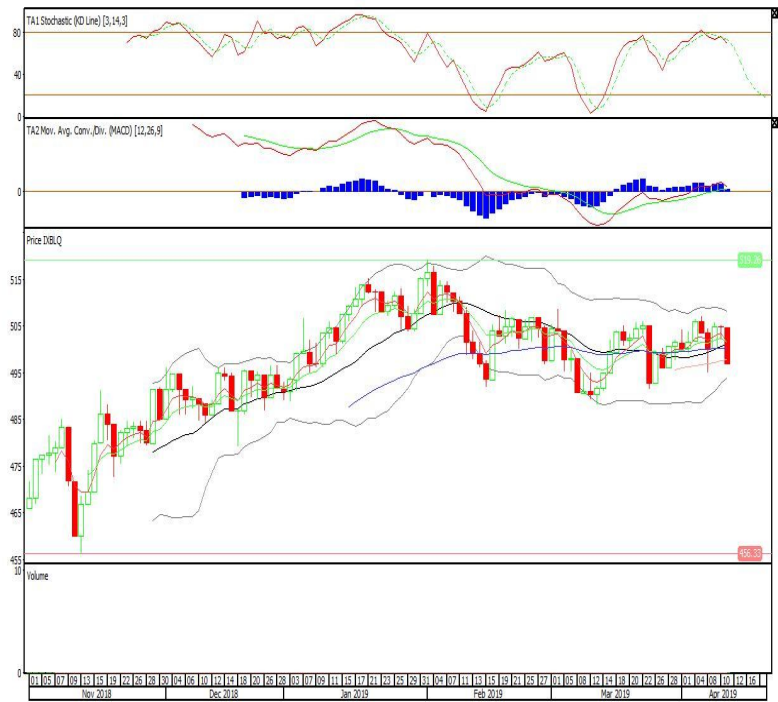


**Batavia Smart Liquid ETF**

**Rekomendasi: SELL**

---Candle ditutup dibawah EMA50 dengan membentuk pola black marubozu yang merupakan sinyal bearish continuation, stochastic netral, MACD histogram convergence positif. Target pelemahan harga pada level 489 kemudian 481 dengan *resist* di level 504 dan 512.

**XBLOQ (496)**



**Head Office****PT INDO PREMIER SEKURITAS**

Wisma GKBI 7/F Suite 718

Jl. Jend. Sudirman No.28

Jakarta 10210 - Indonesia

p +62.21.5793.1168

f +62.21.5793.1167

**ANALYSTS CERTIFICATION.**

The views expressed in this research report accurately reflect the analyst's personal views about any and all of the subject securities or issuers; and no part of the research analyst's compensation was, is, or will be, directly or indirectly, related to the specific recommendations or views expressed in the report.

**DISCLAIMERS**

This research is based on information obtained from sources believed to be reliable, but we do not make any representation or warranty nor accept any responsibility or liability as to its accuracy, completeness or correctness. Opinions expressed are subject to change without notice. This document is prepared for general circulation. Any recommendations contained in this document does not have regard to the specific investment objectives, financial situation and the particular needs of any specific addressee. This document is not and should not be construed as an offer or a solicitation of an offer to purchase or subscribe or sell any securities. PT. Indo Premier Sekuritas or its affiliates may seek or will seek investment banking or other business relationships with the companies in this report.