

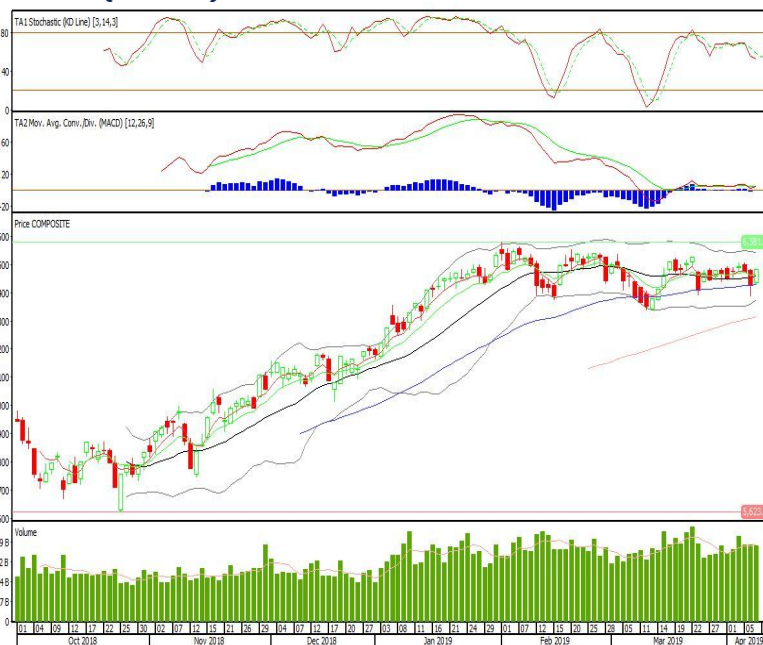
Technical Corner

IHSG

Range: 6.435-6.530

---Indeks ditutup diatas EMA5,10 dan membentuk pola white closing marubozu yang merupakan sinyal bullish continuation, stochastic netral, MACD histogram divergence negatif. Target kenaikan indeks pada level 6.530 kemudian 6.570 dengan *support* di level 6.435 dan 6.390.

IHSG (6.484)

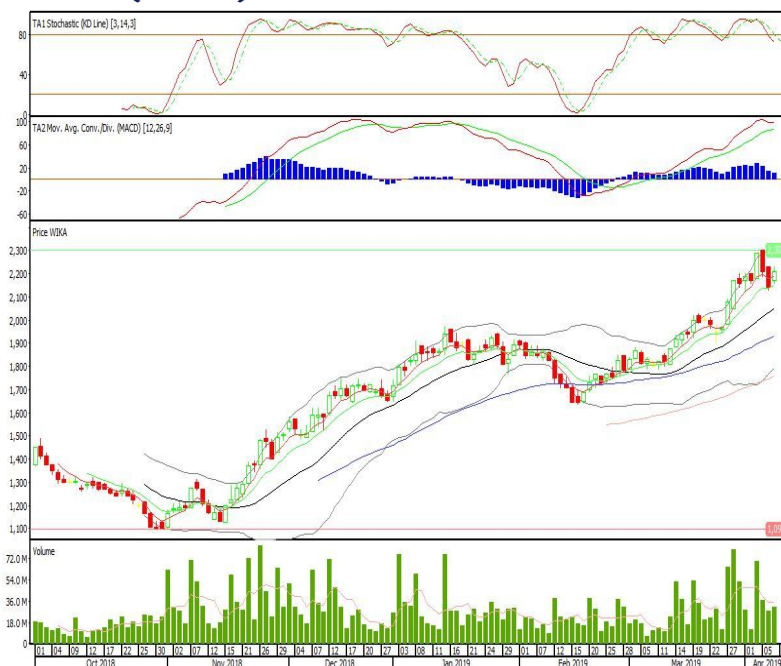


Wijaya Karya

Rekomendasi: Buy

---Candle ditutup diatas EMA5,10 dengan membentuk pola harami yang merupakan sinyal bullish reversal, stochastic netral, MACD histogram convergence positif. Target kenaikan harga pada level 2.260 kemudian 2.300 dengan *support* di level 2.150, *cut loss* jika *break* 2.100.

WIKA (2.210)

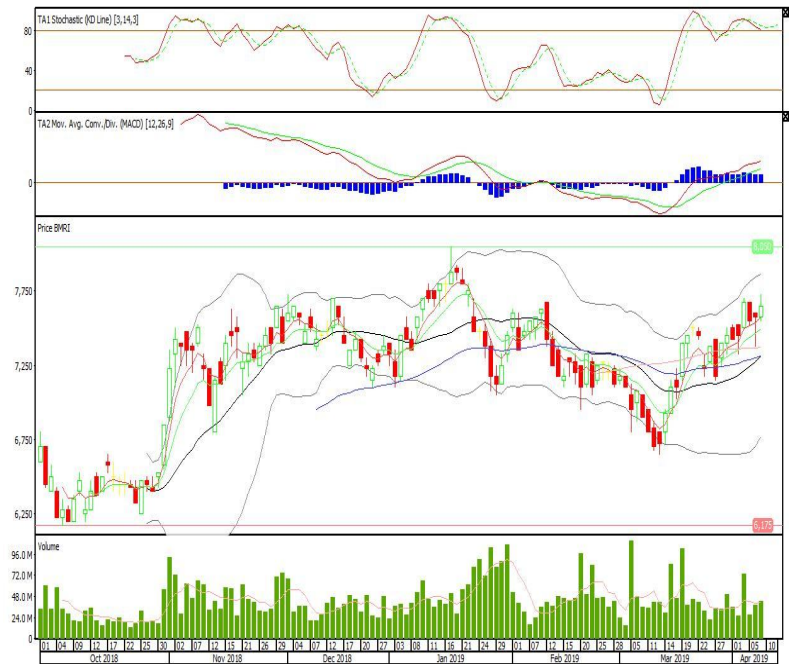


Bank Mandiri

Rekomendasi: Buy

---Candle ditutup di atas EMA5,10 dan membentuk pola long white marubozu yang merupakan sinyal bullish continuation, stochastic overbought, MACD histogram convergence positif. Target kenaikan harga pada level 7.725 kemudian 7.800 dengan *support* di level 7.575, *cut loss* jika *break* 7.500.

BMRI (7.650)



Indofood CBP Sukses Makmur

Rekomendasi: Buy

---Candle ditutup diatas EMA5 dan membentuk pola white opening marubozu yang merupakan sinyal bullish continuation, stochastic netral dan MACD histogram convergence negatif. Target kenaikan harga pada level 9.550 kemudian 9.775 dengan *support* di level 9.025, *cut loss* jika *break* 8.800.

ICBP (9.275)

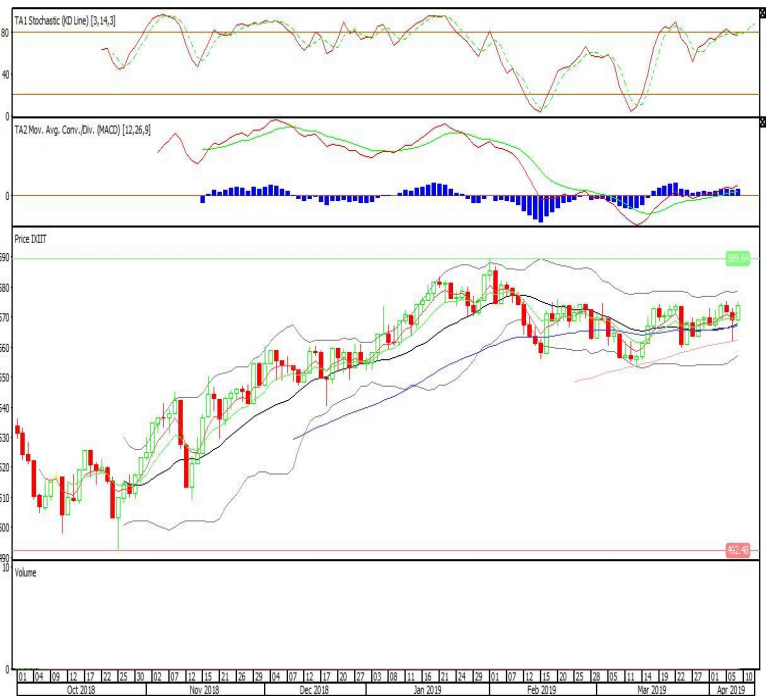


Premier ETF IDX30

Rekomendasi: Buy

---Candle ditutup diatas EMA5,10 dengan membentuk pola long white marubozu yang merupakan sinyal bullish continuation, stochastic netral, MACD histogram divergence positif. Target kenaikan harga pada level 578 kemudian 583 dengan support di level 569, cut loss jika break 564.

XIIT (574)

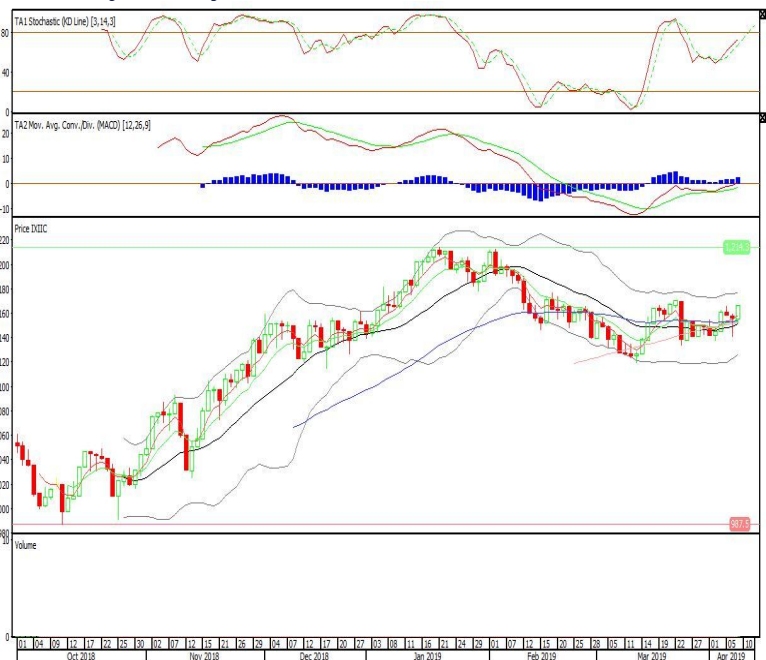


Premier ETF Indonesia Consumer

Rekomendasi: Buy

---Candle ditutup diatas EMA5,10 dengan membentuk pola long white marubozu yang merupakan sinyal bullish continuation, stochastic netral, MACD histogram divergence positif. Target kenaikan harga pada level 1.177 kemudian 1.188 dengan support di level 1.155, cut loss jika break 1.144.

XIIC (1.166)

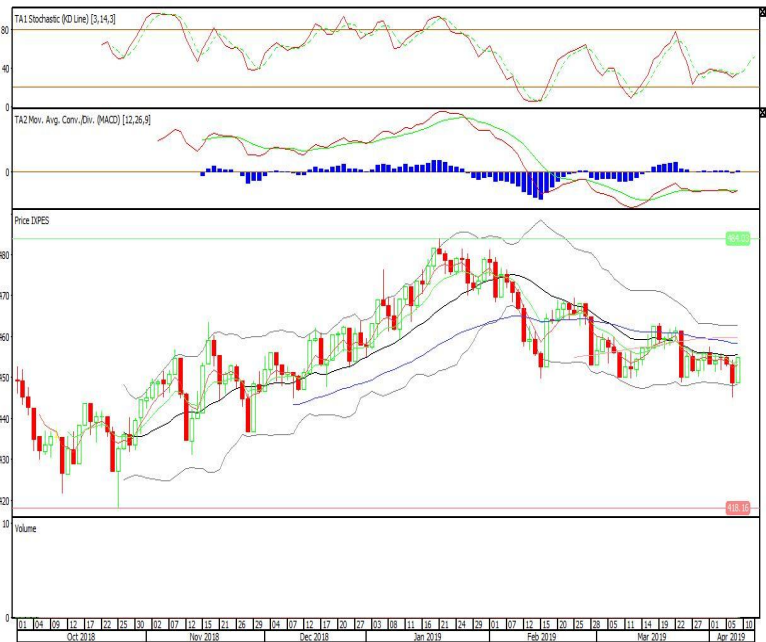


Pinnacle Enhanced Sharia ETF

Rekomendasi: Buy

---Candle ditutup diatas EMA5,10 dengan membentuk pola white opening marubozu yang merupakan sinyal bullish continuation, stochastic netral, MACD histogram divergence positif. Target kenaikan harga pada level 460 kemudian 467 dengan support di level 448, cut loss jika break 442.

XPES (454)



Head Office**PT INDO PREMIER SEKURITAS**

Wisma GKBI 7/F Suite 718

Jl. Jend. Sudirman No.28

Jakarta 10210 - Indonesia

p +62.21.5793.1168

f +62.21.5793.1167

ANALYSTS CERTIFICATION.

The views expressed in this research report accurately reflect the analyst's personal views about any and all of the subject securities or issuers; and no part of the research analyst's compensation was, is, or will be, directly or indirectly, related to the specific recommendations or views expressed in the report.

DISCLAIMERS

This research is based on information obtained from sources believed to be reliable, but we do not make any representation or warranty nor accept any responsibility or liability as to its accuracy, completeness or correctness. Opinions expressed are subject to change without notice. This document is prepared for general circulation. Any recommendations contained in this document does not have regard to the specific investment objectives, financial situation and the particular needs of any specific addressee. This document is not and should not be construed as an offer or a solicitation of an offer to purchase or subscribe or sell any securities. PT. Indo Premier Sekuritas or its affiliates may seek or will seek investment banking or other business relationships with the companies in this report.